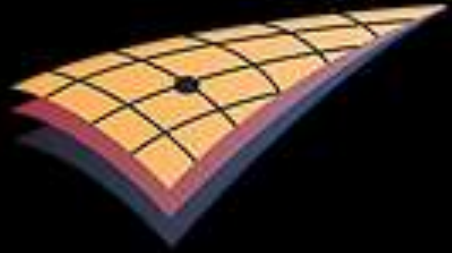


EMSINA



Est. 2001

Vision



Improved emergency management through the use of spatial information

Mission



On behalf of Australia's emergency management community, EMSINA will:

- Promote and encourage the use of spatial information to support decision making
- Provide strategic advice and direction on spatial issues
- Facilitate the sharing of spatial information resources and knowledge
- Encourage partnerships with the spatial industry



CHAPTERS

- EMSINA Vic
- EMSINA ACT
- Others TBC

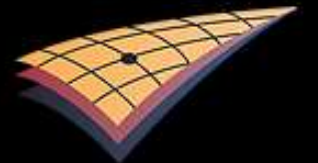


- EMSINA Spatial Developers Group



github.com/emsina-dev

EMSINA.ORG

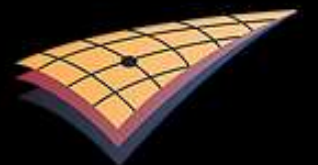


STANDING ACTIVITIES

- Quarterly national meetings
- AFAC Spatial Playpen
- AFAC Professional Development Session
- EMSINA Spatial Developers Group



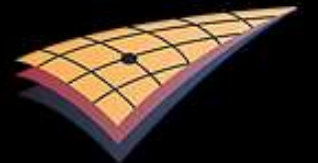
EMSINA.ORG



INDUSTRY ENGAGEMENT



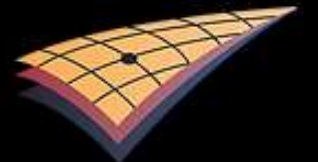
EMSINA.ORG



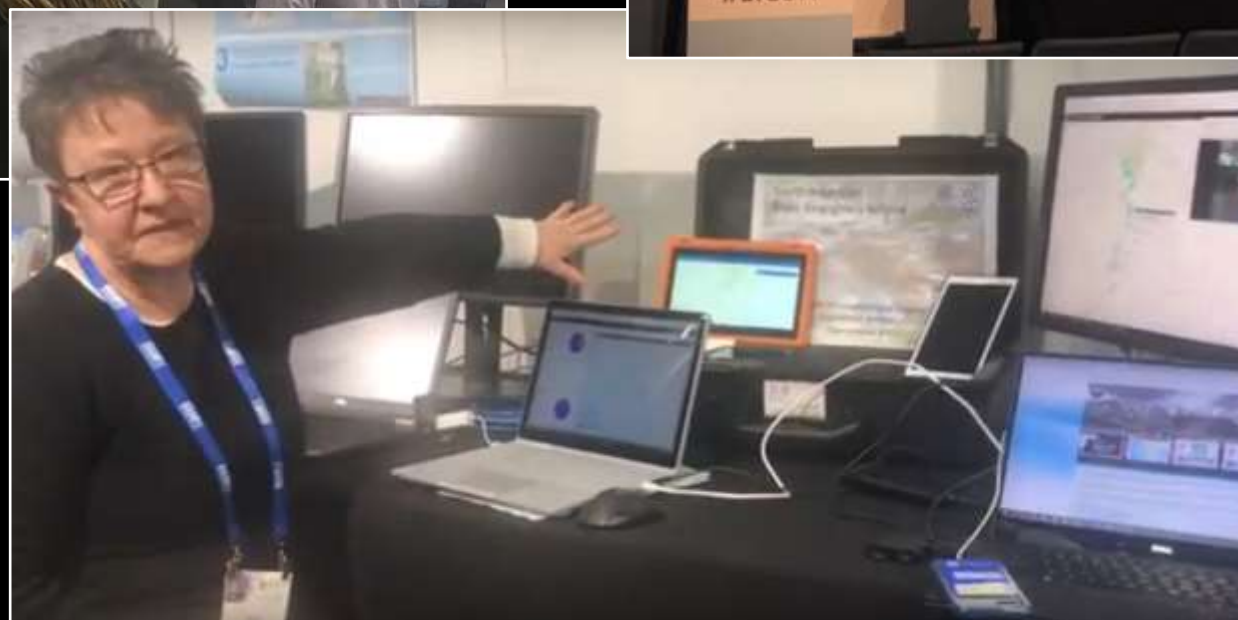
AFAC Spatial Playpen



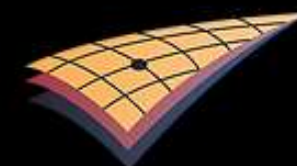
EMSINA.ORG



AFAC Conference



EMSINA.ORG



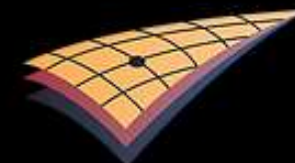
EMSINA National Projects

> Emergency Management - LINK



Prime Minister Malcolm Turnbull visited the Australian Government Crisis Coordination Centre for an update on Cyclone Debbie on Wednesday. Photo: Andrew Meares

EMSINA.ORG



EMSINA National Projects



Emergency Management All Hazards Symbology Set

Basic Symbol Shapes:



Operations: Relevant to planned and operational responses to events and incidents including supporting intelligence.



Incident: Relevant to incidents for any hazards including natural event, civil activities and policing

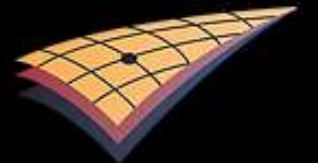


Assets: Assets or infrastructure that are relevant to an incident or event or operational response; assets at risk, or infrastructure that needs protection



Observations: Coming in 2018...

EMSINA.ORG



EMSINA National Projects

> Emergency Management Facilities Database

The National Emergency Management Facilities Database is an EMSINA initiative to bring together Australia's first comprehensive database of Ambulance Stations, Metro Fire Stations, Police Stations, Rural and Country Fire Facilities and SES Facilities.



EMSINA National Projects

> Training Resource Kit

> PUA00 Public Safety Training Package - Industry Wide Competency

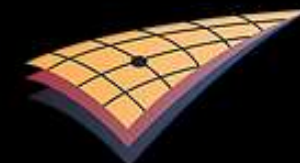
- PUATEA002B Work autonomously
- PUATEA001B Work in a team

> CPP07 Property Services Training Package - Spatial Information

- CPPSIS3001A Apply map presentation principles
- CPPSIS3005A Collect basic spatial data
- CPPSIS4006A Read and interpret basic image data
- CPPSIS4015A Apply GIS software to problem-solving techniques

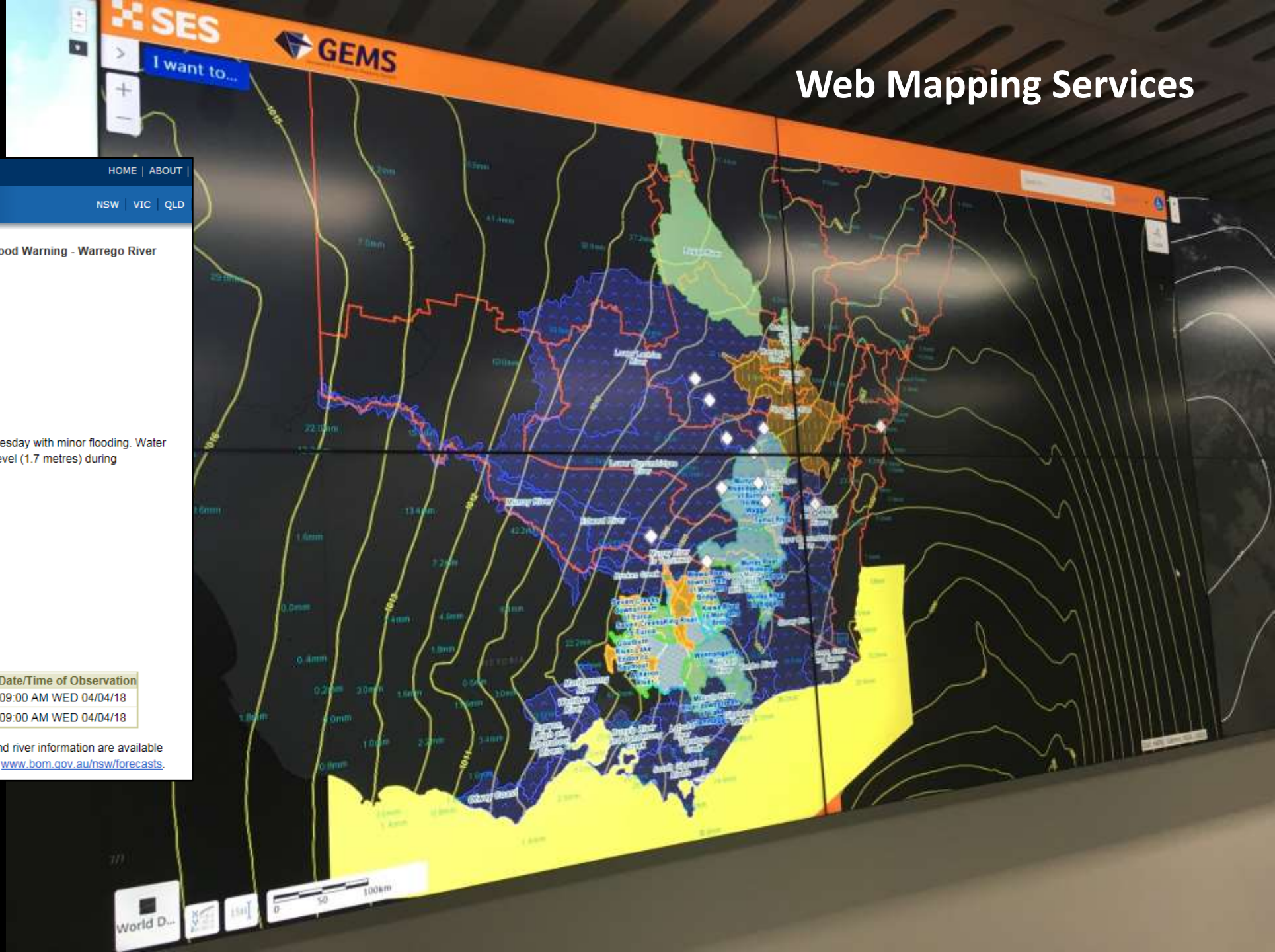


EMSINA.ORG



BOM

Web Mapping Services



HOME | ABOUT |

NSW | VIC | QLD

[Bureau Home](#) > [Australia](#) > [New South Wales](#) > [Warnings Summary](#) > Flood Warning - Warrego River

IDN36631

Australian Government Bureau of Meteorology, **New South Wales**
Final Minor Flood Warning for the Warrego River (NSW)
at Fords Bridge Bywash

Issued at 9:50 am EST on Wednesday 4 April 2018

Flood Warning Number: 8

Warrego River (NSW):

The Warrego River at Fords Bridge Bywash peaked at 1.72 metres on Tuesday with minor flooding. Water levels at Fords Bridge Bywash are expected to fall below its minor flood level (1.7 metres) during Wednesday.

Flood Safety Advice:

FloodSafe advice is available at www.ses.nsw.gov.au

For emergency assistance call the SES on telephone number 132 500.

For life threatening emergencies, call 000 immediately.

Next Issue:

This is a final warning, no further warnings will be issued for this event.

Latest River Heights:

Location	Height of River (m)	Tendency	Date/Time of Observation
Warrego River at Barrington No. 2	1.45	Steady	09:00 AM WED 04/04/18
Warrego River at Fords Bridge Bywash	1.70	Falling	09:00 AM WED 04/04/18

This advice is also available by dialling 1300 659 218. Warning, rainfall and river information are available at www.bom.gov.au/nsw/flood. The latest weather forecast is available at www.bom.gov.au/nsw/forecasts.

Legend



I want to...



Filter Swatches...



Filter

Request For Assistance (RFA)

RFA Previous 24 Hours by Type

- Community First Responder
- Flood Miscellaneous
- Flood Rescue
- Fodder Drop
- General Land Rescue
- Medical Resupply
- Resupply
- Road Crash Rescue
- Storm
- Support
- Vertical Rescue
- Vet Assistance

NSW_SES_Public

- NSW SES Regions

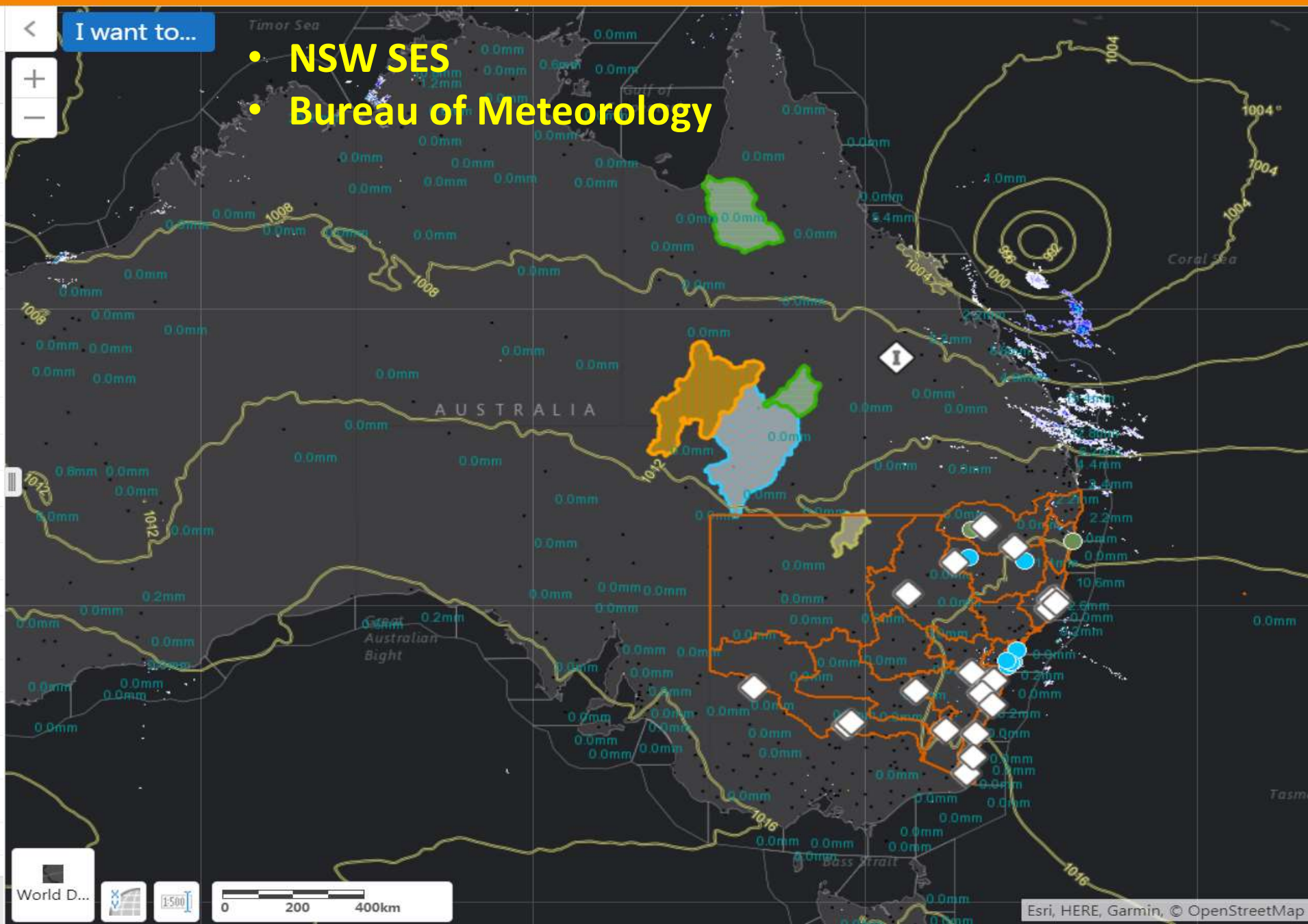
QFES Bushfire Alert Feed

- I QFES Bushfire Alert Feed

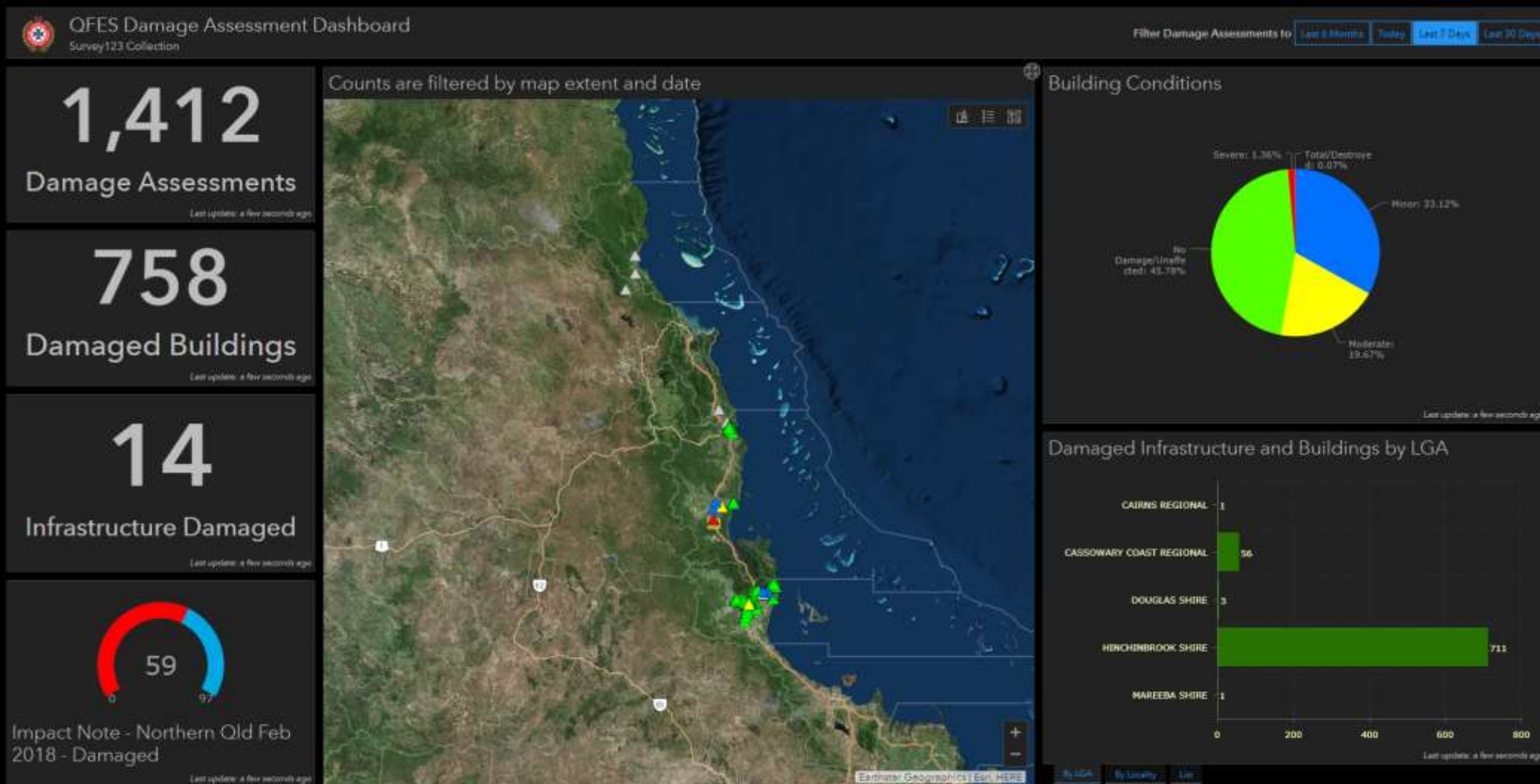
World Dark Gray Base

Dark Gray Canvas Base

- NSW SES
- Bureau of Meteorology



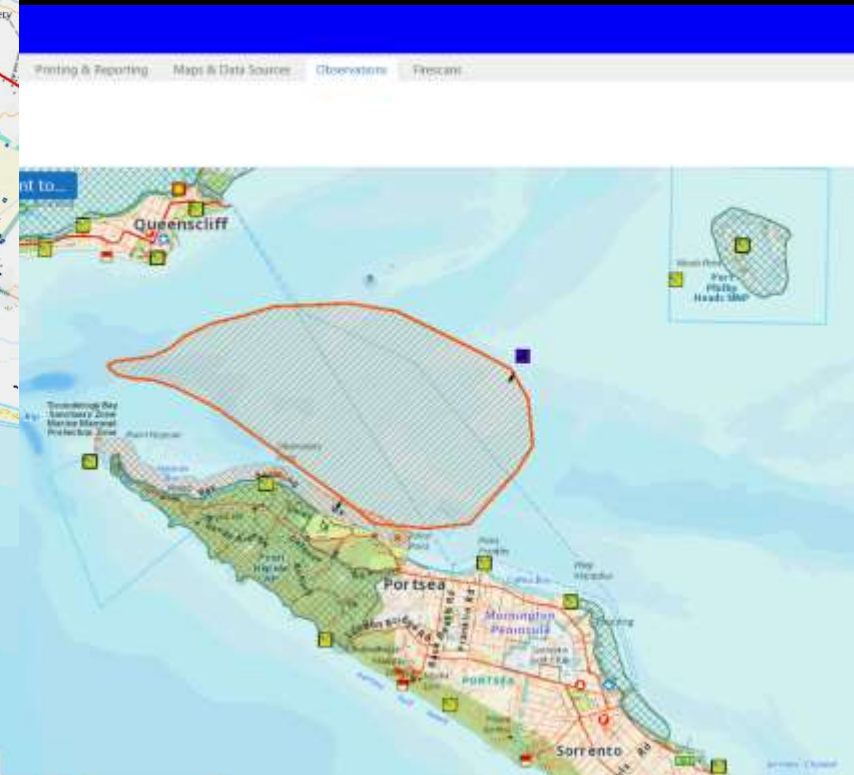
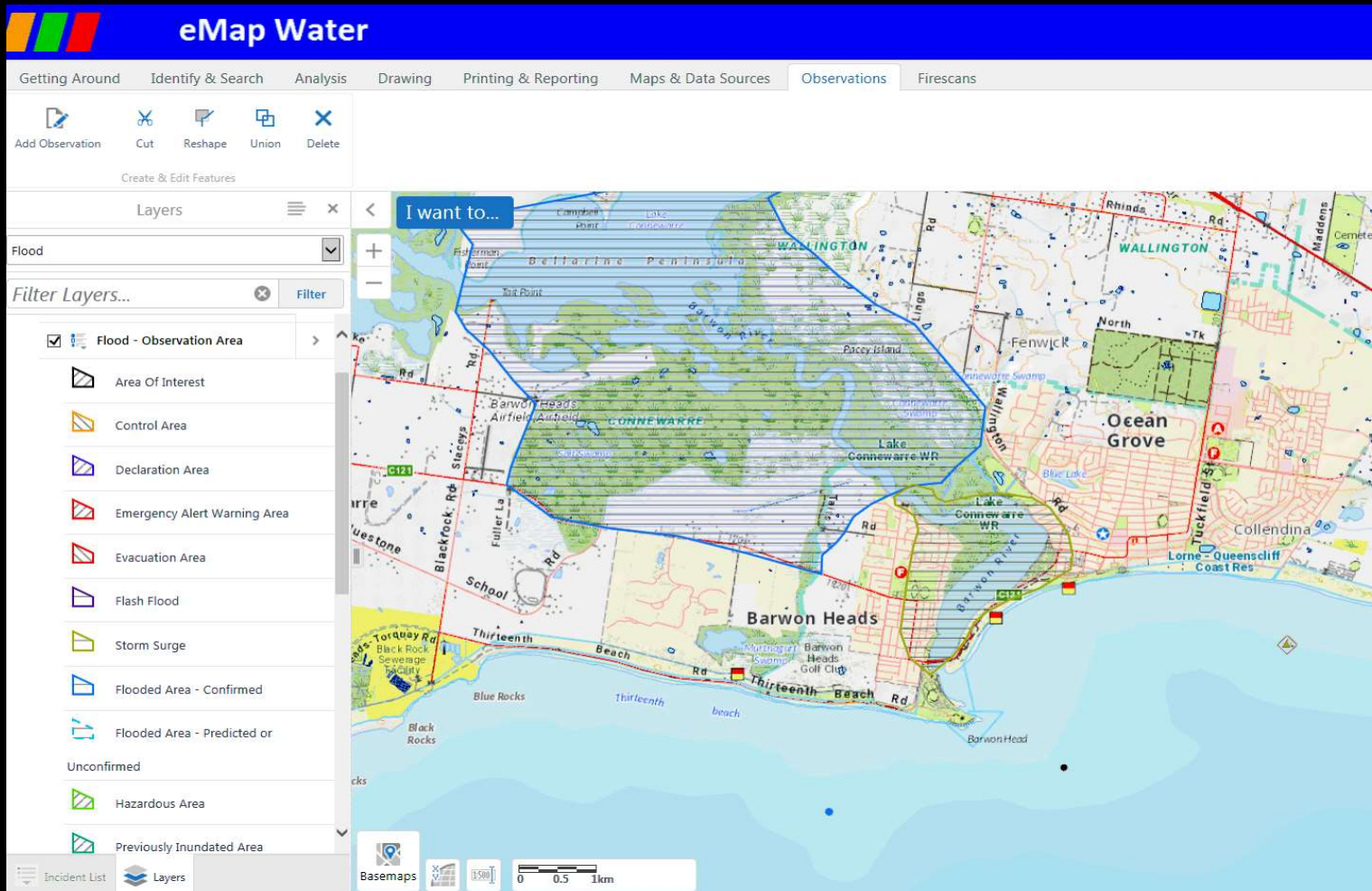
QLD Volunteer Damage Assessment Online Tool: Impact Note



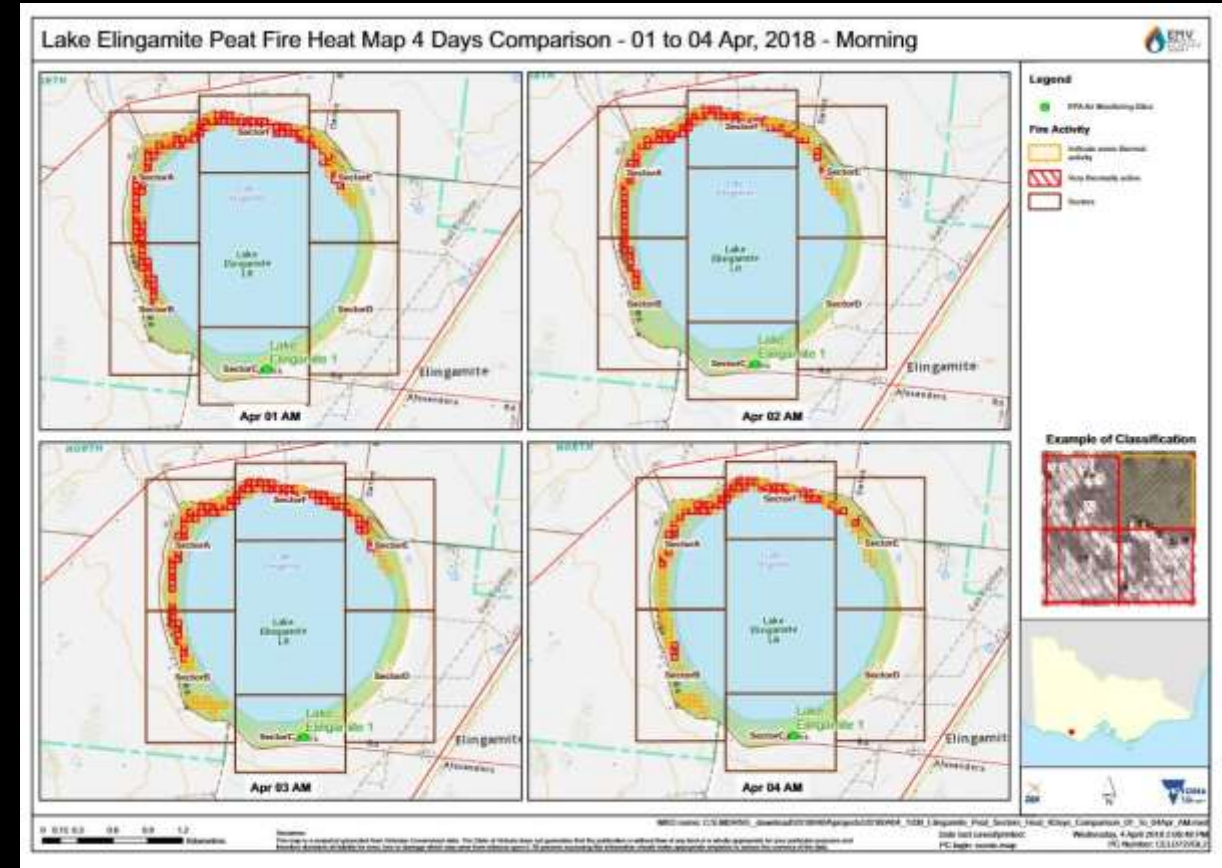
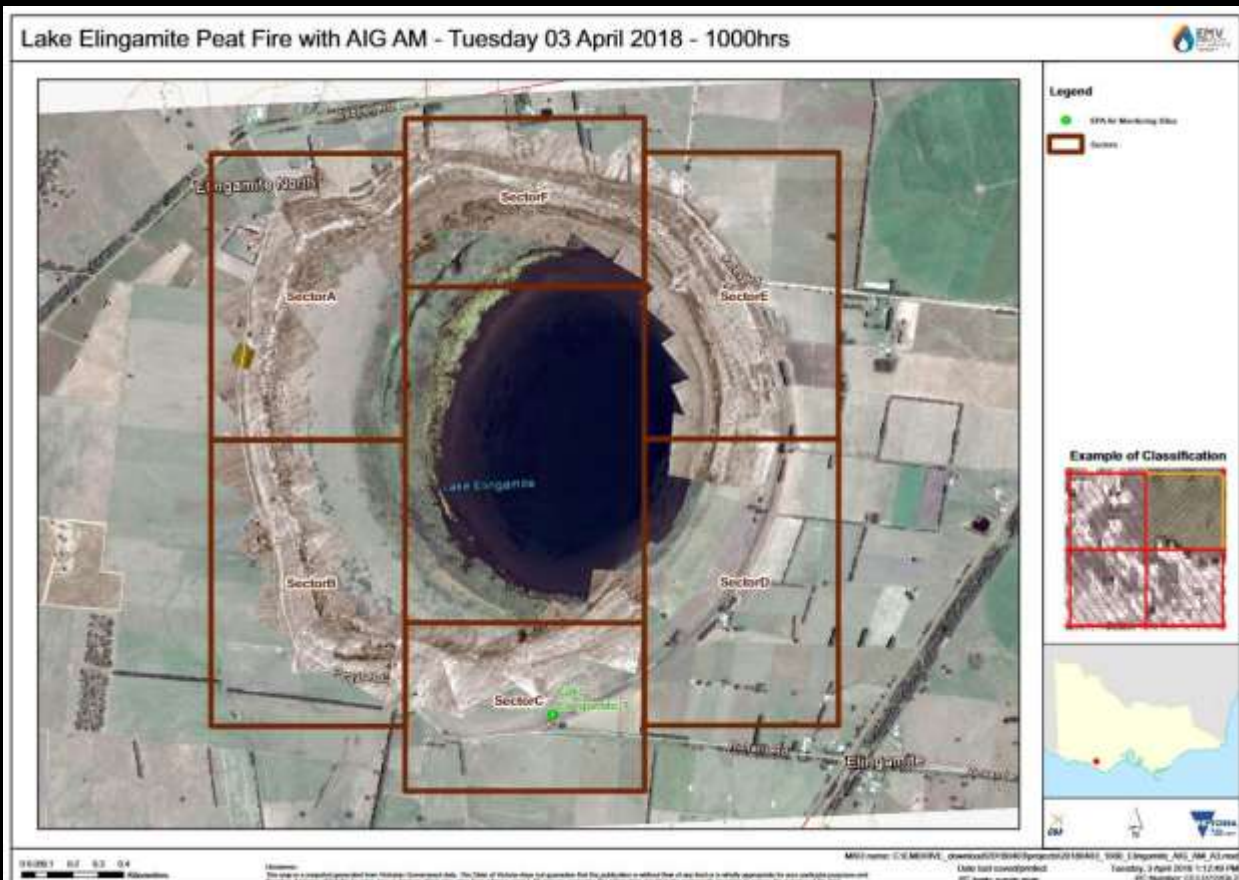
ACT Volunteer MAPS group



VIC Maritime Emergency Mapping Site



VIC Peat Fire Heat Mapping



EMSINA.ORG



Contact EMSINA...

The EMSINA Group can be contacted in the following ways:

Generic Email Inquiry or feedback:



EMSINAgroup@gmail.com

Specific Email Inquiry to one of our Chapters (Groups):



EMSINA National: EMSINAgroup@gmail.com



EMSINA Victoria: emsina.vic.au@gmail.com



EMSINA Spatial Developers: EMSINAgroup@gmail.com



EMSINA Australian Government and ACT: coming soon

Who is my EMSINA National Member?



The names of the EMSINA National Members are published [here](#)

The EMSINA Group actively maintains the following Social Media feeds:



EMSINAgroup



@EMSINAgroup

The EMSINA Group also maintains the following blog:



EMSINA's [Blog](#)

EMSINA.ORG

