



Adoption of geo-spatial technology at Nagpur Metro Rail Project

Adoption of Geo spacial Technology at Nagpur Metro Rail Project

Agenda

-
- About Nagpur Metro Project
- Why New way of project management?
- Geospatial Concept : In Metro Rail Perspectives
- Geospatial Planning
- Drone Usage
- Asset Management & Clash Detection with resolution
- Design co-ordination
- Way Forward

NMRCL: India's first metro on 5D BIM integrated with ERP

2 North South: 19.7 km; 17 Stations
East West: 18.6 km; 19 Stations

15 Major contractors (> 300 Cr)

55 Major contract packages worth 8680 Cr

25 DDCs & 3D Modeling teams

1000 Combined Users on Digital Platform



Adoption of Geo spacial Technology at Nagpur Metro Rail Project



5D BIM + ERP - One project one platform



Design Management



Time & Progress Management



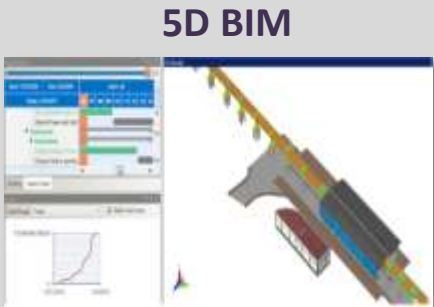
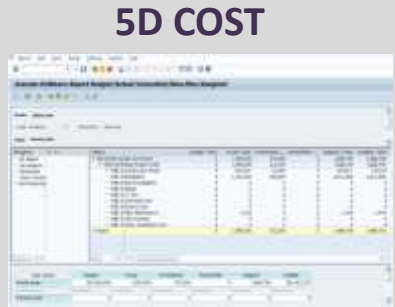
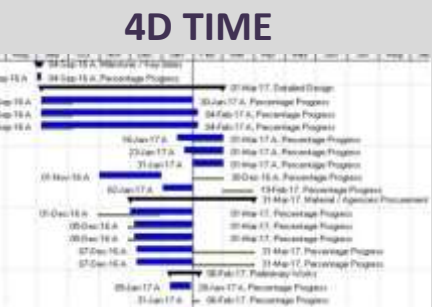
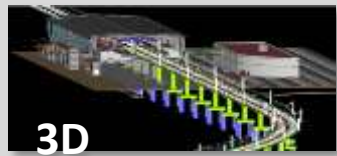
Multiple Contracts Management



Cost & Revenue Management



Integrated Asset Management



Adoption of Geo spatial Technology at Nagpur Metro Rail Project



How NMRCL Ecosystem Works

DDC 1



Detailed Design Consultants Across Globe

DDC 2



DDC 3



CONTRACTORS

Execution Contracts Awarded

Schedule Submission & progress updates by Contractors

GC & NMRCL Approval



Helpdesk

Common Data Environment

3D Model Collaboration & Final Preparation

GC/NMRCL:
1. Model based analysis
2. Schedule & progress updates
3. Cost monitoring
4. 5D Simulation & Visualization



NMRCL DATA CENTER

GC



Review & Approvals

NMRCL



Contractors, GC, NMRCL

1. Monthly Billing Processes
2. Approval of Bills & Payments
3. Payroll Processing
4. Safety, Quality Processes

Why Digital Platform required?

5D BIM: CONVERTING REAL INTO VIRTUAL

Adoption of Geo spacial Technology at Nagpur Metro Rail Project



Geo Spatial Concept used at NMRCL

Virtual World

Visualisations



Spatial



3D Models & Assets



Documentation



Simulate BIM model on Geo data



Virtual To Real



At NMRCL all the above has been used

Adoption of Geo spacial Technology at Nagpur Metro Rail Project

Geo Spatial uses at Nagpur Metro

- Carried out Drone Survey along the alignment of the corridor
- Used it for rechecking the GAD
- Created the 3D model of Drone data
- Used that 3D model in spatial planning of the various stations & viaduct for checking probable clashes
- Superimposed the 3D Model on drone output to detect the clashes with public utilities
- Used geo referenced models for multi disciplinary clash detection
- Common Platform used for design coordination

Use of Drones at Nagpur Metro



Adoption of Geo spacial Technology at Nagpur Metro Rail Project

Drone digital 3D Model Usages

Digital Surface Model

- It's Virtual reality 3D Model.
- Used for geometric measurements in all directions

A. 3D Model form Drone Survey



B. Model superimposed on Drone data for 3D visualization & coordination



C. For actual measurements - horizontal.



D. For actual measurements - Verticals.



E. Measuring Surface Areas



Adoption of Geo spacial Technology at Nagpur Metro Rail Project



Visualization – Drone Survey data of Priority section – ROB superimposed with 3D model of the ROB

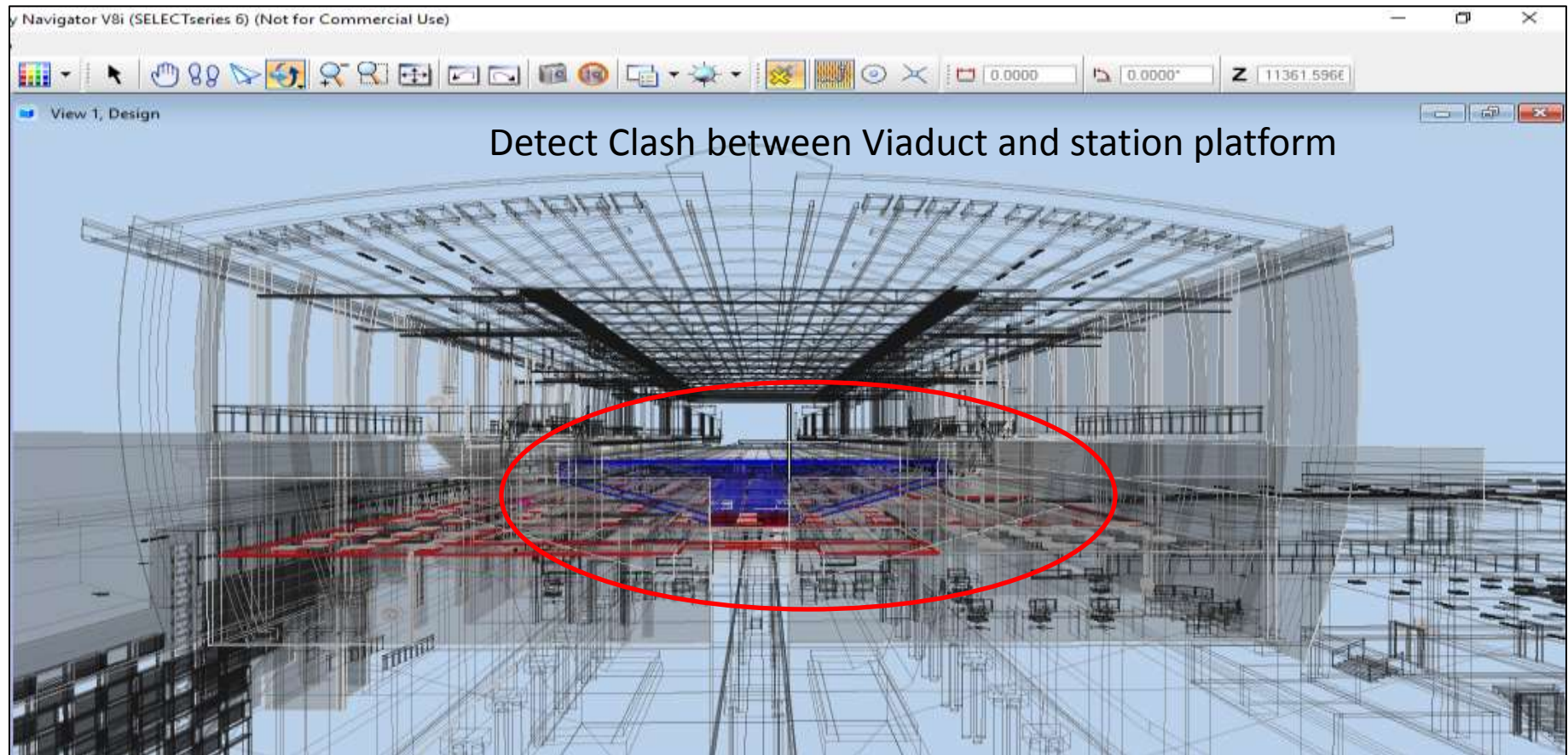


Nagpur Metro Rail Corporation Limited

Adoption of Geo spacial Technology at Nagpur Metro Rail Project



3D Model: Clash Detection & conflict resolution



Adoption of Geo spacial Technology at Nagpur Metro Rail Project

Use of technology for asset management



Adoption of Geo spacial Technology at Nagpur Metro Rail Project

3D Model: Playing significant role in Asset Management in O & M Phase

- Using Bentley's Assetwise tool to manage Asset Tags creations
- Asset tags are being created in the 3D models .
- Assets & components shall be maintained in the system
- Documents shall be referenced to each asset
- Will be integrated with SAP for the maintenance activity
- Navigation to 3D model to & from document is enabled.

3D Model: Playing significant role in Asset Management in O & M Phase

Documents are linked to Assets identified through relations (Ex: linked documents to CCTV are shown below)

Documents				
Relationship	Number	Revision	Title	Class
Document	SED01-PHO-AR-CAI-MH-ABD-0001	B01	DEMO	Document/As Built Design Compliance Certificate

Locations			
Relationship	Code	Name	Path
Location	MH	Mham Depot	Nagpur Metro Rail Corporation Limited

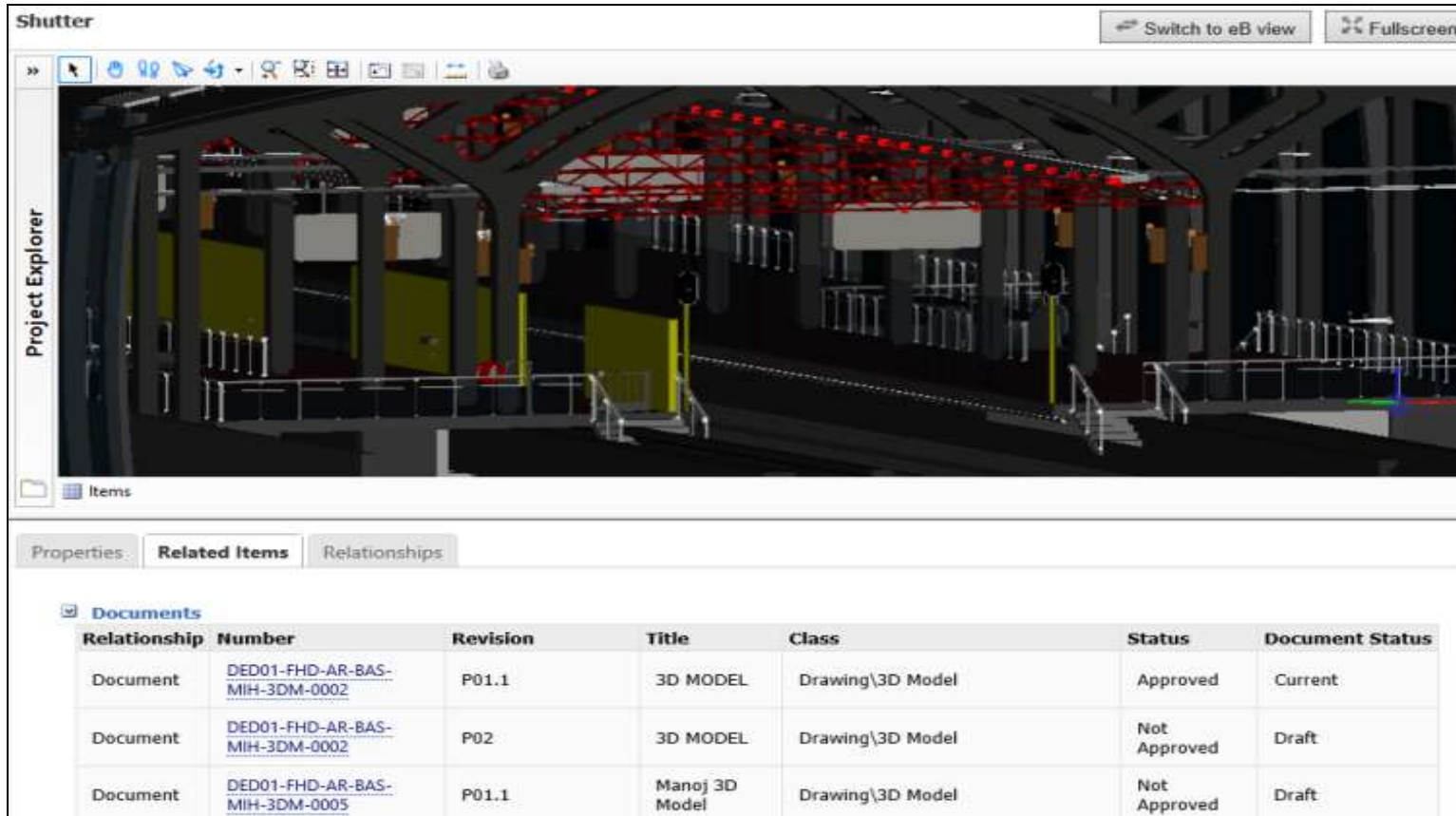


Adoption of Geo spacial Technology at Nagpur Metro Rail Project



3D Model: Playing significant role in Asset Management during O & M Phase

Another example: Select door shutter on platform and see associated documents



The screenshot shows a 3D model of a platform with a door shutter selected. The interface includes a toolbar at the top, a Project Explorer on the left, and a table of associated documents at the bottom. The table has columns for Relationship, Number, Revision, Title, Class, Status, and Document Status.

Relationship	Number	Revision	Title	Class	Status	Document Status
Document	DED01-FHD-AR-BAS-MIH-3DM-0002	P01.1	3D MODEL	Drawing\3D Model	Approved	Current
Document	DED01-FHD-AR-BAS-MIH-3DM-0002	P02	3D MODEL	Drawing\3D Model	Not Approved	Draft
Document	DED01-FHD-AR-BAS-MIH-3DM-0005	P01.1	Manoj 3D Model	Drawing\3D Model	Not Approved	Draft

Adoption of Geo spacial Technology at Nagpur Metro Rail Project

Technology using geo spatial co-ordination

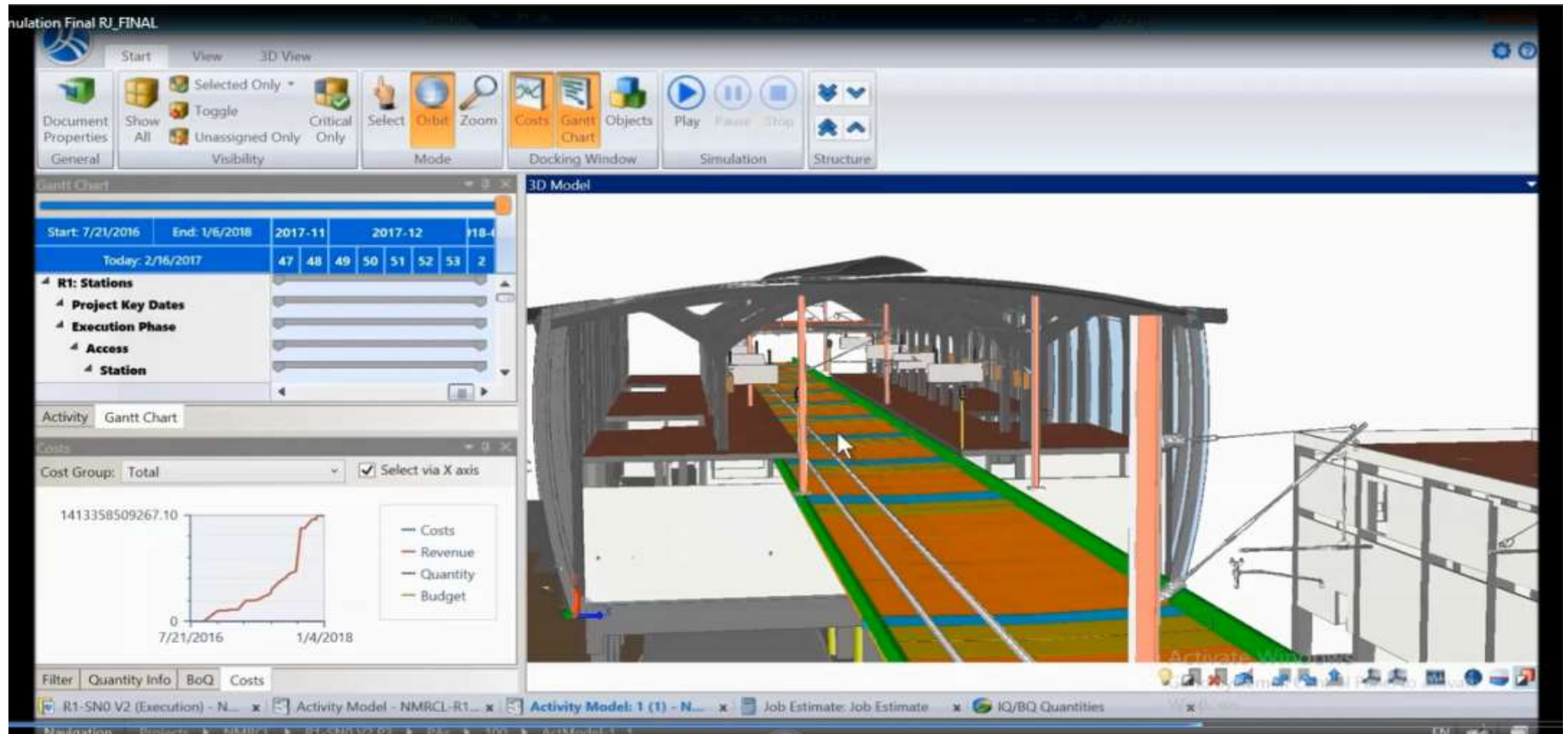


Adoption of Geo spacial Technology at Nagpur Metro Rail Project

Technology using Geo spatial

- All the 3D models are geo referenced
- Models are created referencing to the base 3 D models of other systems
- Federated models are created by combining various models
- On these models the BOQ & Schedules are linked for Simulation & Project monitoring
- Integrated information for time & cost used for project monitoring

Simulation showing technology enabling geo spatial coordination



Adoption of Geo spatial Technology at Nagpur Metro Rail Project



Way Forward

Adoption of Geo spacial Technology at Nagpur Metro Rail Project