



WORLD
RESOURCES
INSTITUTE

MONITORING INDONESIA'S LAND DISTRIBUTION AND SOCIAL FORESTRY AREA IMPACT USING GIS

SURAHMAN PUTRA PRATAMA; ASTI ASOKAWATI

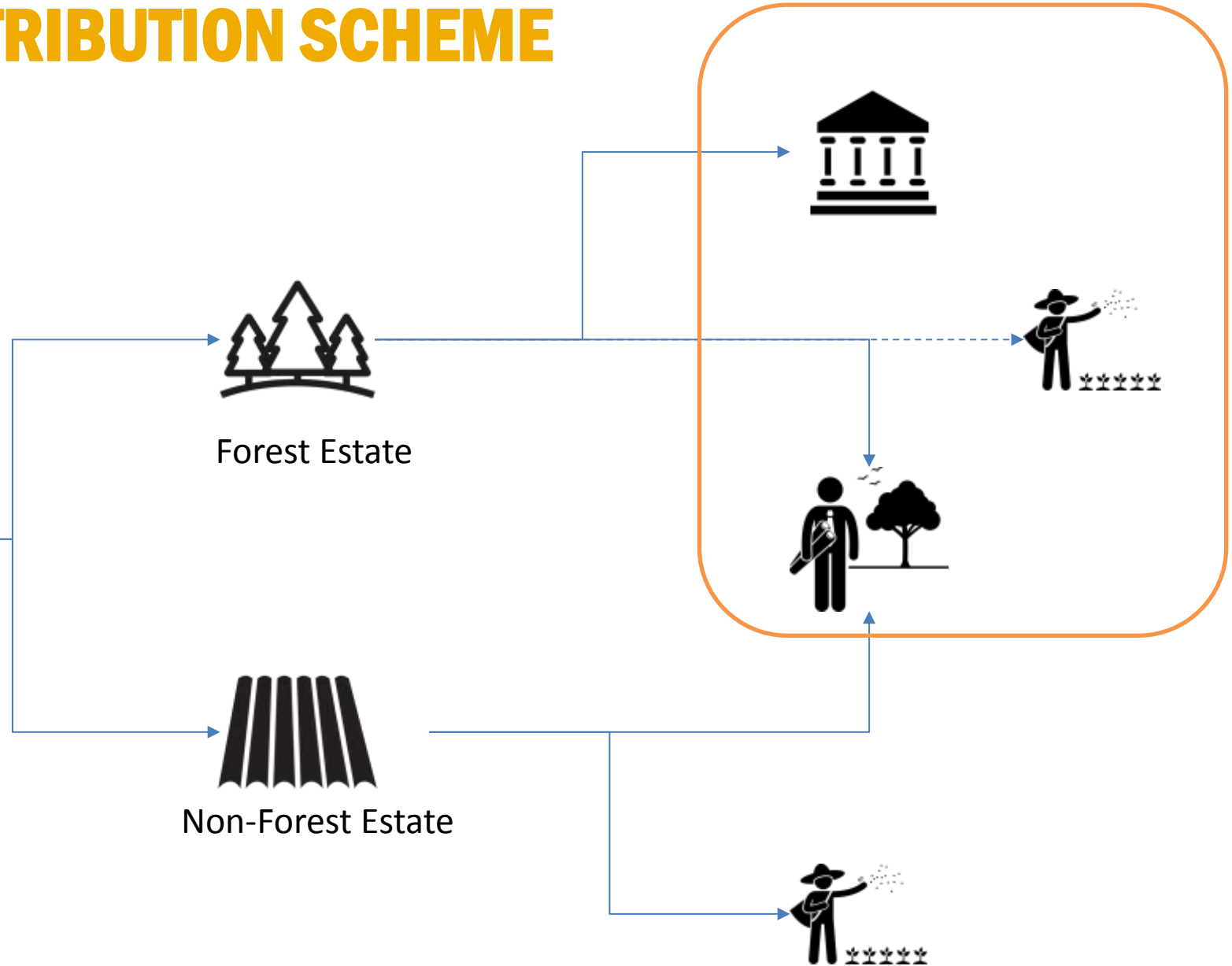
OBJECTIVE

- **Identify land distribution in Indonesia**
- **Identify impact of social forestry on Indonesia's land distribution**

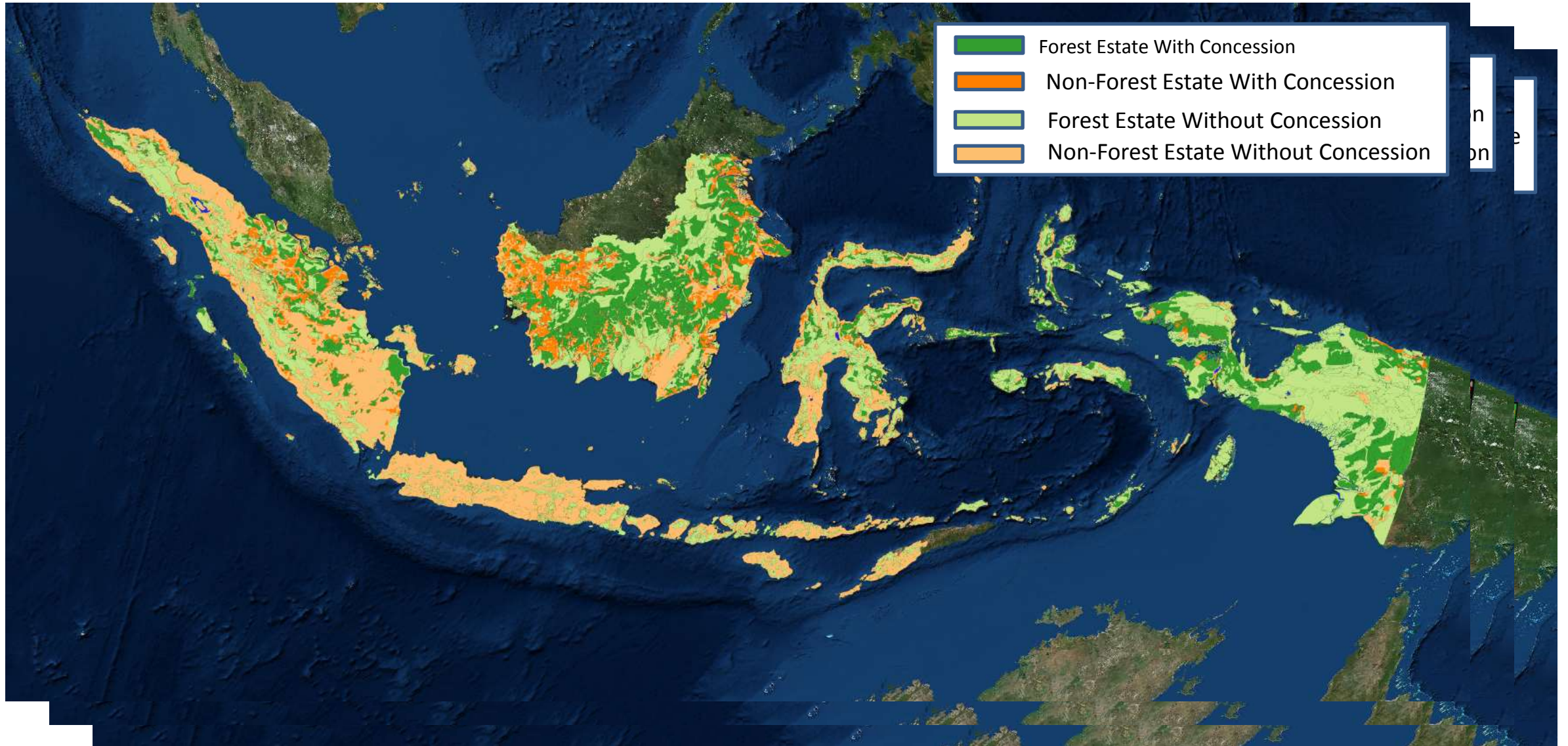
DATA

- **Forest and non-forest legal area (Ministry of Forestry)**
- **Palm oil, forest plantation, and logging concession (Global Forest Watch)**
- **Social forestry area (Ministry of Forestry)**

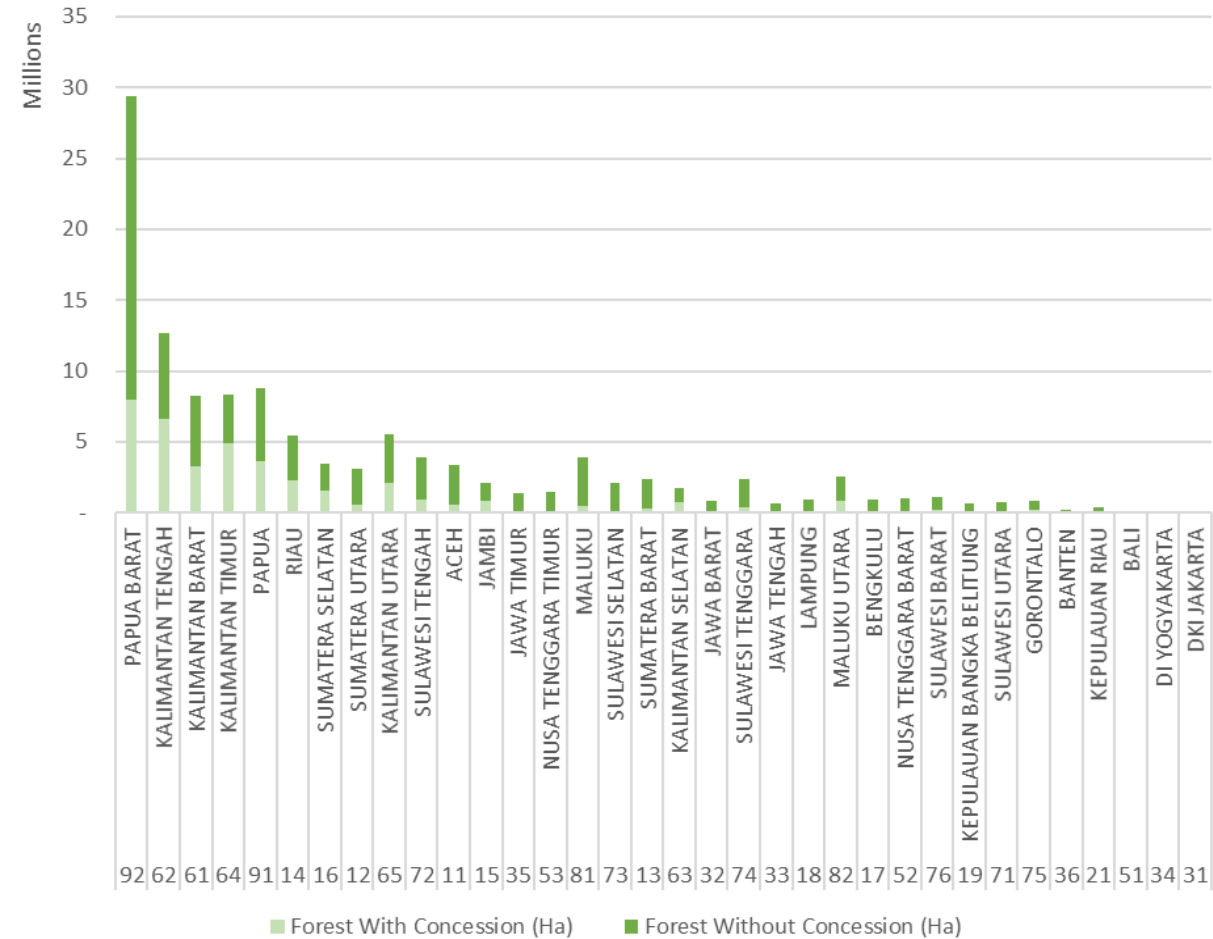
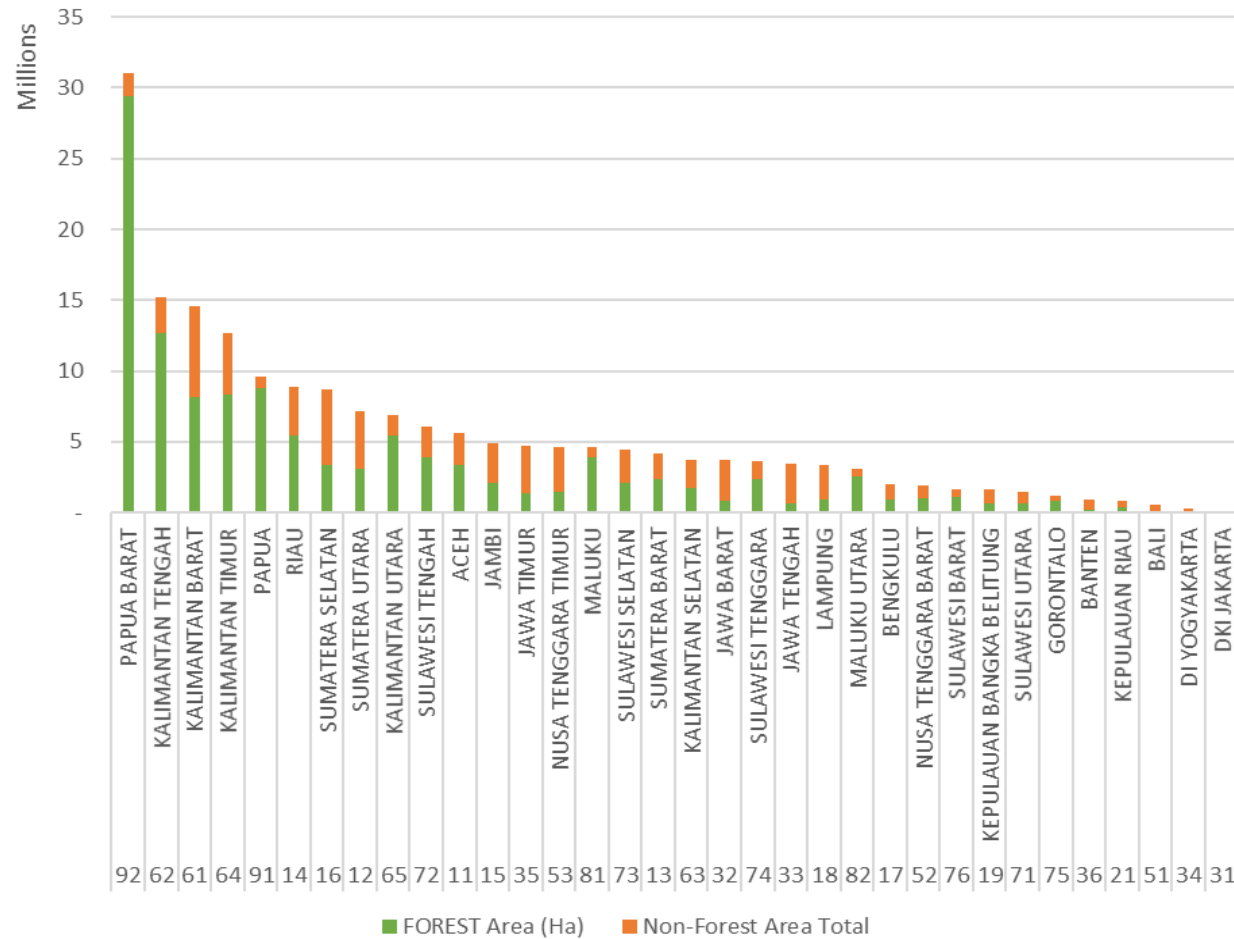
INDONESIA LAND DISTRIBUTION SCHEME



INDONESIA'S LAND DISTRIBUTION



SOCIAL FORESTRY POTENTIAL



Indonesia's Land Distribution	Total Area (Ha)	Total Area Percentage
Forest Estate (Government)	81,733,438.70	44%
Forest Estate (Concession)	38,682,484.43	21%
Non-Forest Estate (Concession)	12,876,191.76	7%
Non-Forested Estate (People)	54,439,494.15	29%

65 %
35 %

SOCIAL FORESTRY SCHEME

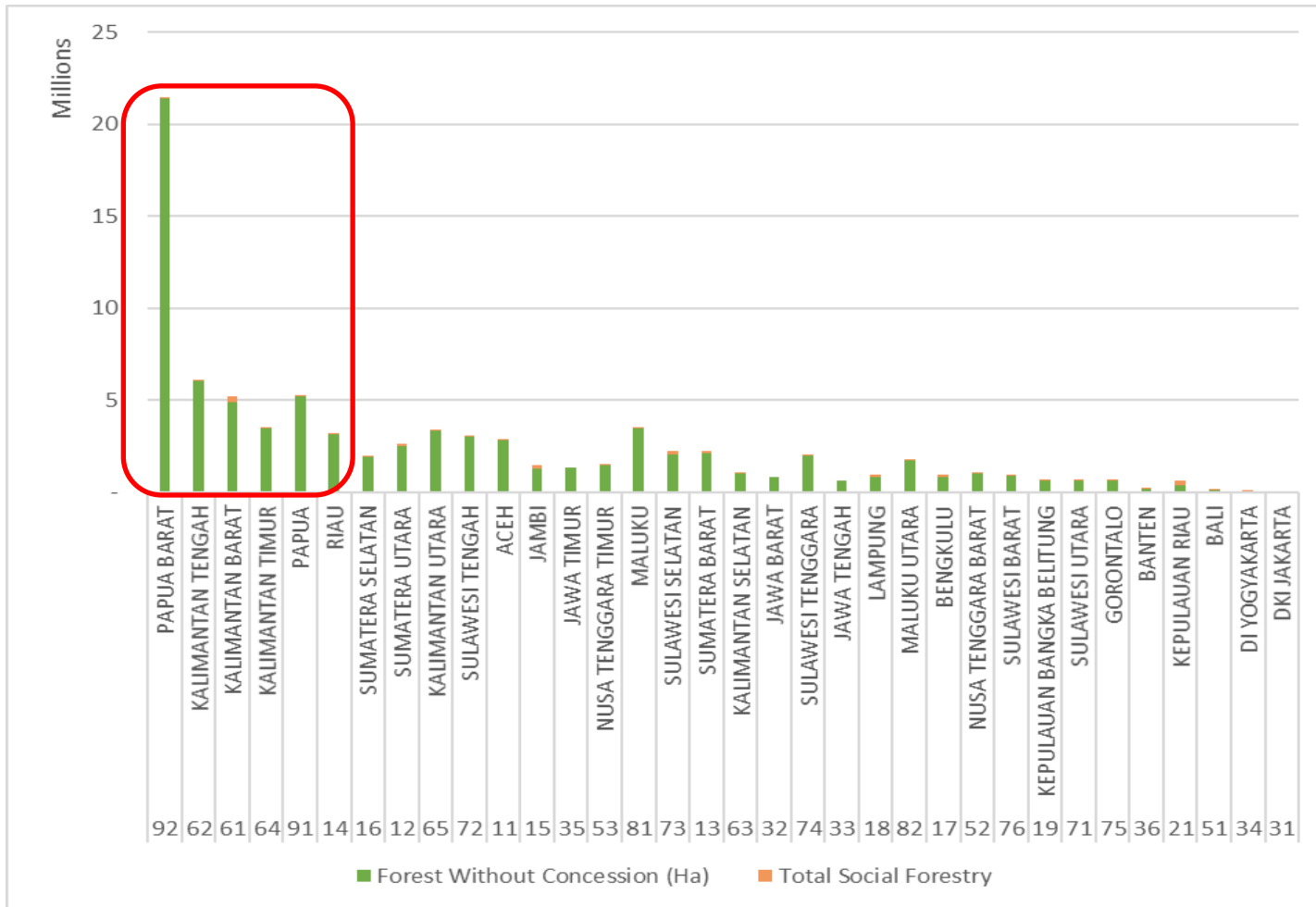
5 social forestry schemes

Social Forestry Scheme	Duration of The Permit
Customary Forest	Permanent Right
Village Forest	35 Years
Community Forest	35 Years
Smallholder Plantation Forest	35 Years
Private-People Partnership Forest	35 Years

SOCIAL FORESTRY AREA

Target (2019) 12 Million Ha

3 out of 5 social forestry scheme calculated



10 Million Ha

2 Million Ha

Indonesia's Land Distribution	Total Area (Ha)	Total Area Percentage
Government (Forest)	79,477,504.42	42%
Private Sector (Forest)	38,682,484.43	21%
Private Sector (Non-Forest)	12,876,191.76	7%
People (Non-Forest)	54,439,494.15	29%
People (Social Forestry)	2,255,934.28	2%

NEXT STEP

- **Define exact potential area of social forestry within priorities province by Including population data**
- **Monitor the deforestation effect of social forestry policy**

SURAHMAN PUTRA PRATAMA
SURAHMAN.PUTRA@WRI.ORG