



A Case Study about IFEZ(Song-do) Smart-City

Ryan LEE

Director, IFEZ City Integrated Operation Center

Career History

Incheon U-City Corporation – Incheon, Korea

- Director, IFEZ Smart-City Integrated Operation Center (Jan 2017~ Present) * Managing IFEZ Smart City Integrated Operation Center
- Project Manager, IFEZ Smart-City Infrastructure Construction (Nov 2013 ~ Dec 2016) * Designing IFEZ Smart City Infrastructure & Services System
* Designing / Implementing IFEZ Cloud Datacenter & City Operation Center

Skill & Accomplishment

Smart City Infrastructure & System Architect

SDDC(Software Defined Data Center) Design / Implementation / Operation

Cloud Datacenter Operation & System Consolidation

Education

Graduate School of Logistics, Incheon National University

September 2015 ~ August 2017, Master's Degree in Logistics

Inha University - Incheon, Korea

March 1994 ~ February 2002, Bachelor's Degree in Industrial Engineering

“Smart City” Definition

Smart-City

A sustainable city that provides a variety of urban services based on urban infrastructure built with fusion of construction, information and communication technologies to improve city competitiveness and quality of life

Smart-City Service

A Smart-City solution to collect information on major functions of the city such as administration, traffic, welfare, environment, and disaster prevention, and **to provide the information or the services** linked to each other

Smart-City Technology

Construction, information and communication convergence technology for building Smart-City infrastructure and providing Smart-City services

Smart-City Construction Project

A business that installs, maintains or improves Smart-City infrastructure to provide Smart-City Services in accordance with Smart-City plans

Smart-City Industry

An industry that creates economic or social added value **by utilizing Smart-City technology, Smart-City infrastructure, and Smart-City services**

* Act on the Promotion of Smart-City and Industry Promotion (2017.03) KOREA

The Act on Ubiquitous Construction, etc., which has been the foundation of domestic U-City business, has been revised.

(Act on the Promotion of Smart-City and Industry Promotion, etc.) (2017.03)

The shift from U-City to Smart-City represents a tremendous change in the direction of service deployment, coverage, and application of background technologies.

As a result, in order to plan and build Smart-City well, it is necessary to make efforts to provide services according to **each city characteristic** from the design stage of Smart-City.

In the Smart-City construction stage, **service configuration items** should be considered with overall consideration.

“Smart-City”

refers to a **sustainable city** that provides a variety of city services based on urban infrastructure built by combining construction, information and communication technologies

to improve the competitiveness and quality of life of the city.

The current concept of Smart-City construction business is developed, providing a comprehensive urban service **utilizing the latest IT technology.**

It can be understood that this is changing **from the construction industry to the IT industry,** from the U-City project of Korea’s future city concept to the Smart-City project.

1
WHY

Why do it?
What's the need?

2
WHAT

What should it do?

3
HOW

How will it get done?

*Global Leading
Smart U-city 송도!*

Why "Smart-City"?

through “Smart City”,
 services that were previously configured individually
 are integrated into one



1
WHY

Why do it?
What's the need?

2
WHAT

What should it do?

3
HOW

How will it get done?

*Global Leading
Smart U-city 송도!*

How to build "Smart-City"?

“Smart City” Components

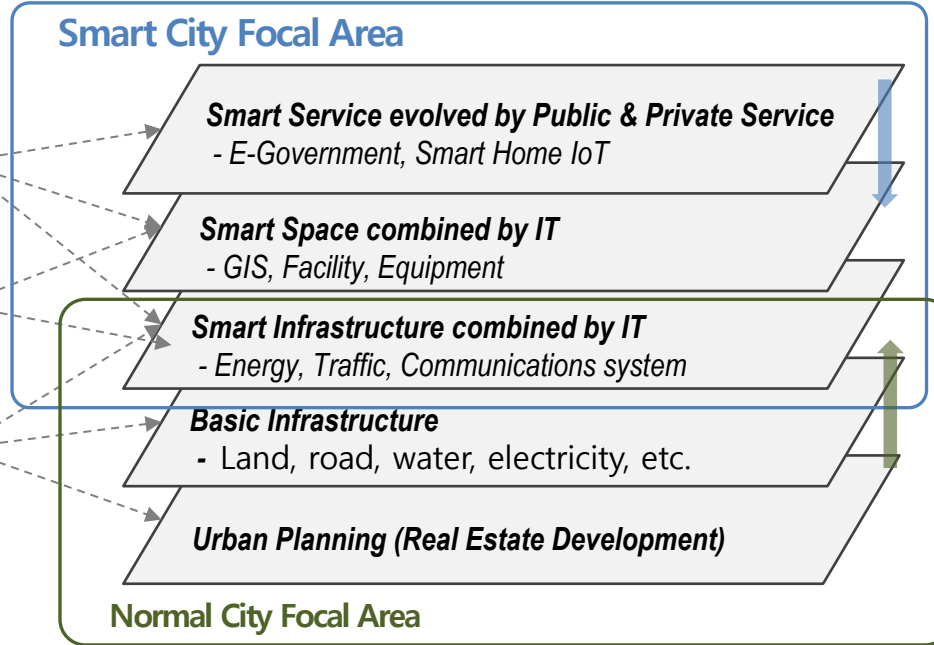
Smart City Approach 5 Layers

3 Core Elements

Service

Platform

Infrastructure



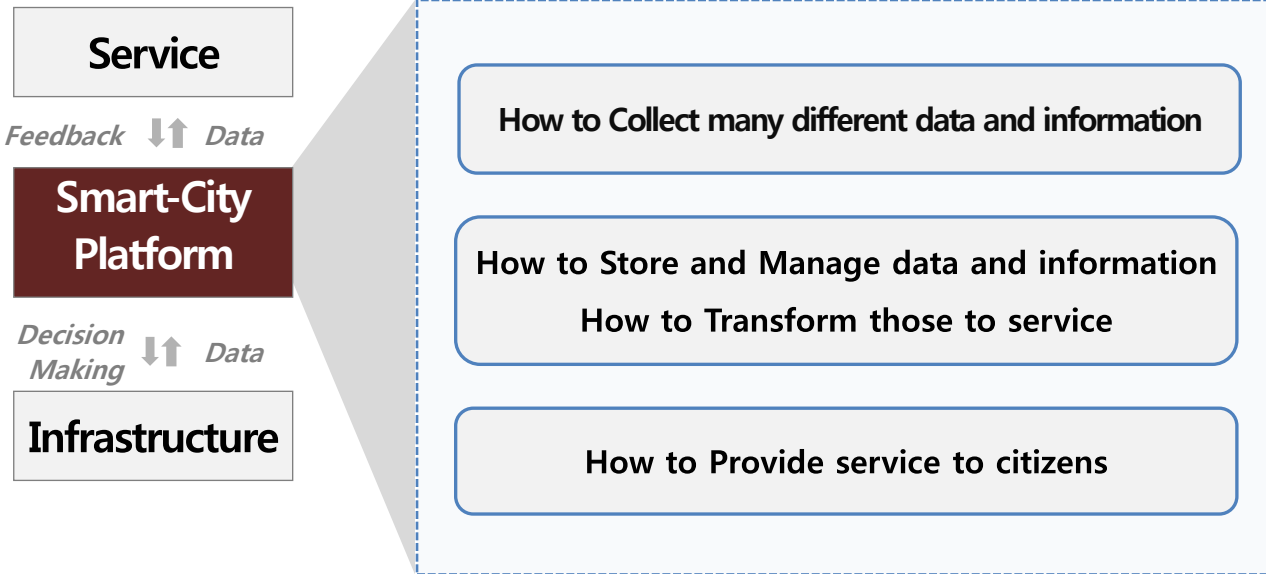
- Urban Utilization Side
- Consumer-centered

- New Town Development Side
- Provider-centered

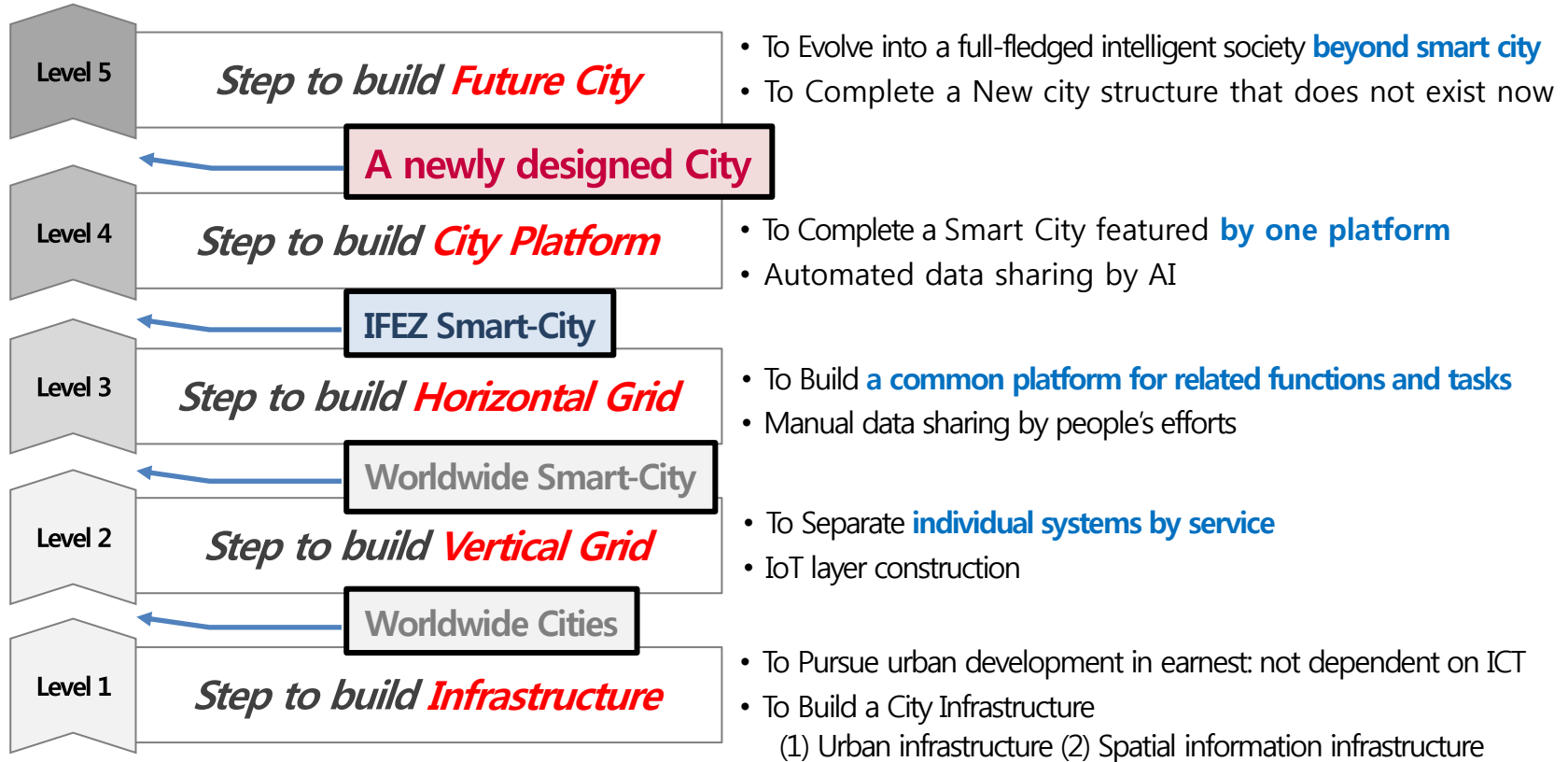
The infrastructure and services are linked to each other in the center of **the Smart City Platform**.

The City Integrated Operation Center is equipped with a technology drive system centered on core technology, a data driven system for integration between areas, and a governance system for continuous implementation

3 Core Elements



“Smart City” Development Phase



1
WHY

Why do it?
What's the need?

2
WHAT

What should it do?

3
HOW

How will it get done?

*Global Leading
Smart U-city 흥도!*

What

“IFEZ Smart-City”?

A BUSINESS BASE FOR NORTHEAST ASIA

 Area

123.8km²



Period of development

2003 ~ 2022



Estimated population

540,000 people





ifez

ifez



YEONGNONGNA in 2003

YEONGNONGNA Now

Vision

“Global Leading Smart City”

Anytime,
Anywhere,
Anyone
with Smart City Services

Convenient
City Service

Better Quality
Of City Life

24 hrs
City Control

The Safest City

Private-Public
Profit Model

Strategy

IFEZ Smart City

One Space



IFEZ Smart City
H/W Platform

One System



IFEZ Smart City
S/W Platform

Services



IFEZ Smart City

Development Plan

IFEZ Smart City



IFEZ Smart City



Public Service



U-Traffic



U-Crime Prevention



U-Facility



U-Disaster



U-Green



U-Traffic Facility

Private Service



U-Home



U-Store



U-Education



U-Building



U-Healthcare



U-Office

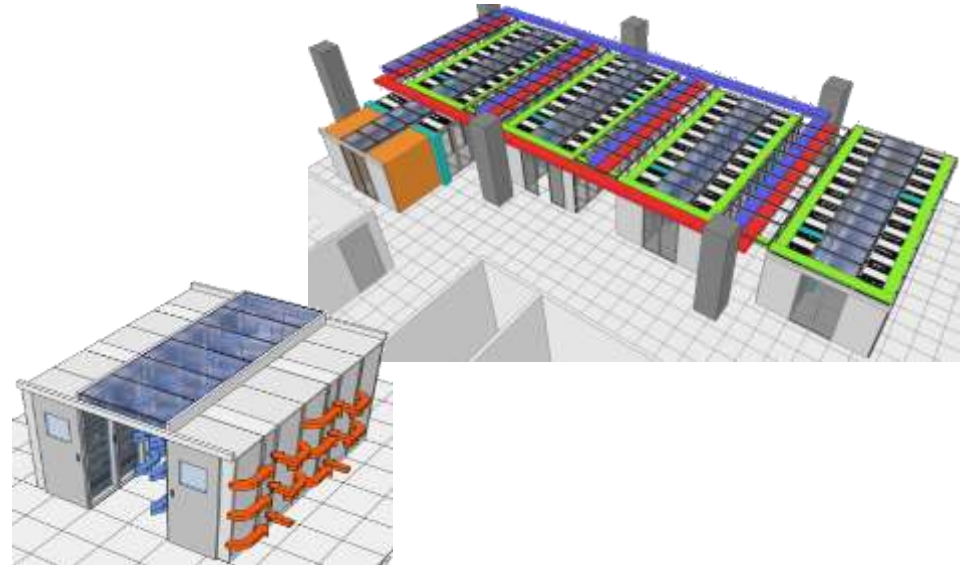


IFEZ SMART CITY (Integrated Operation Center)





First Cloud Center in KOREA for Government, for Smart City Service



The city of the future
that you've been dreaming
And waiting for, Already exists,
HERE & NOW.



Thank you

ifez

IFEZ SMART CITY PPP (Public-Private PartnerShip Model) Model



Established
Smart City PPP Company



Public Sector Business

IFEZ Smart City Development
Establish Smart City Governance



Apply Smart City PPP Model

Public

PPP

Private

Public U-City
Model

PPP U-City
Model

Private U-City
Model

Global Leading Smart City

Private Sector Business

Smart City & UN Org. IcT Operation
Private Smart City Design
/Build/Operation



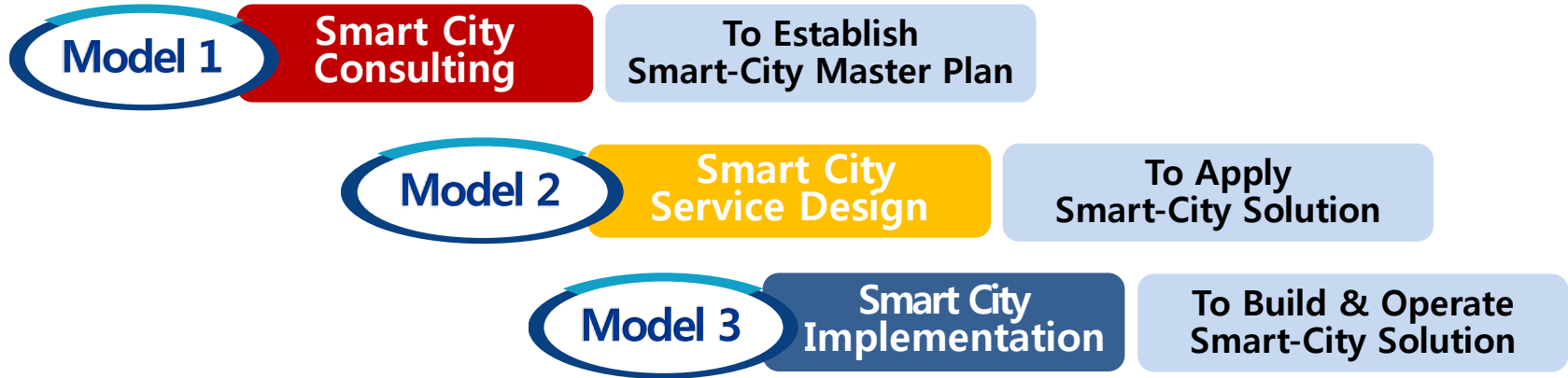
Consulting/Design/Build/Operation
Project with Cutting Edge
Smart City

Sustainable Revenue Smart City model

Revenue 20% Refund
to Public Sector OPEX

※ OPEX : Operating Expenditure

Export Model of IFEZ SMART CITY



Public Sector Business

Private Sector Business