

LOCAL KNOWLEDGE AS A PRIMARY BASIS IN IDENTIFICATION OF VILLAGE ADMINISTRATIVE BOUNDARY IN INDONESIA

CASE STUDY IN SUMBER VILLAGE,
TRUCUK SUB-DISTRICT, KLATEN
REGENCY, CENTRAL JAVA PROVINCE

Paper by:

Bruce Malyd Pratama
Rahma Anisa Fitrah Insani
Bagus Miasyah Putra

Muhammadiyah University of Surakarta

Presented in

YOUTH FORUM
GEOSMART ASIA 2017

Putrajaya International Convention Center,
24th of August
year two thousand and seventeen.



INTRODUCTION

Research Background

1 Menghadirkan kembali negara untuk melindungi segenap bangsa dan memberikan rasa aman kepada seluruh warga negara

2 Membuat pemerintah tidak absen dengan membangun tata kelola pemerintah yang bersih, efektif, demokratis, dan terpercaya

3 Membangun Indonesia dari pinggiran dengan memperkuat daerah-daerah dan desa dalam kerangka negara kesatuan

4 Menolak negara lemah dengan melakukan reformasi sistem dan penegakan hukum yang bebas korupsi, bermartabat, dan terpercaya

5 Meningkatkan kualitas hidup manusia Indonesia

6 Meningkatkan produktivitas rakyat dan daya saing di pasar internasional

7 Mewujudkan kemandirian ekonomi dengan menggerakkan sektor-sektor strategis ekonomi domestik

8 Melakukan revolusi karakter bangsa

9 Memperteguh ke-bhinneka-an dan memperkuat restorasi sosial Indonesia

JOKO WIDODO | 2014
JUSUF KALLA

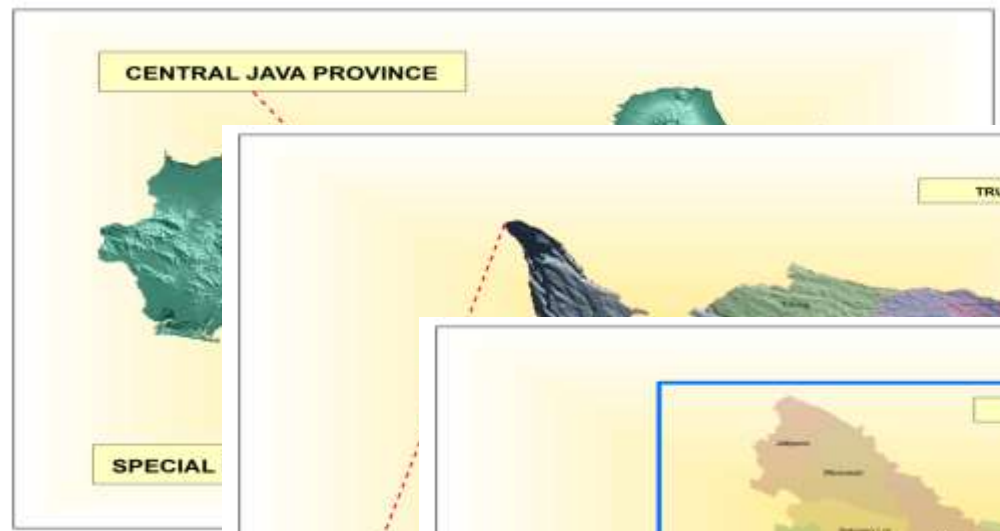
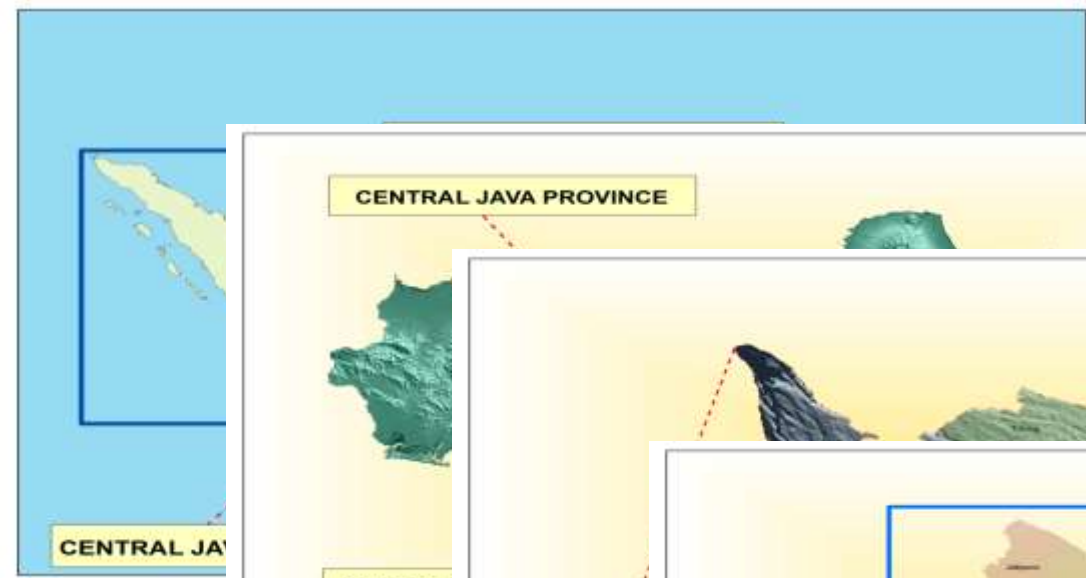
PELAKSANAAN 9 Agenda Prioritas NAWA CITA

JOKOWI - JK
Untuk Rakyat Indonesia

3 Develop Indonesia from the periphery by strengthening the regions and villages within the framework of the unitary state.



LOCATION



Data and Equipment

Data

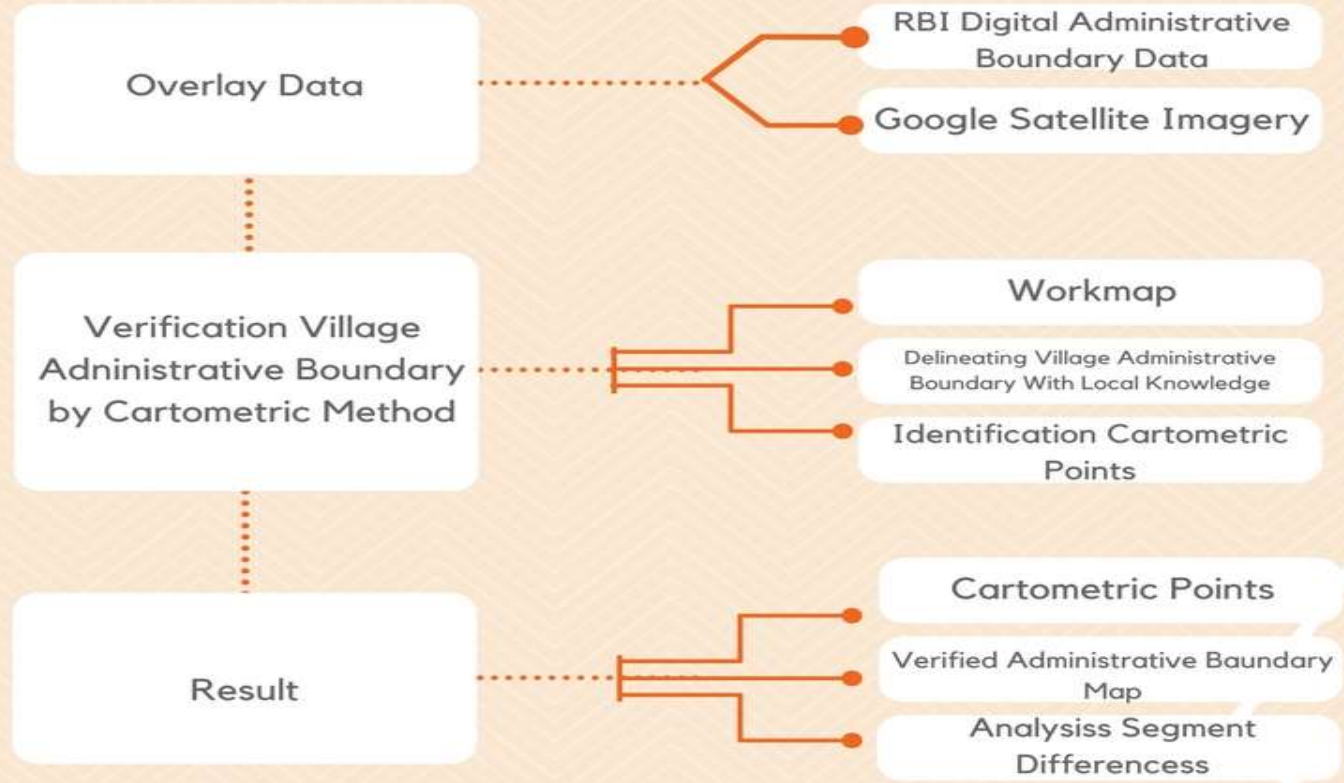
- Digital RBI data of 2004
- Google Sattealite Maps Imagery of Sumber Village 2016, downloaded for free using SASPlanet.
- Supporting Data as local knowledge about hamlet information and administrative boundary of Sumber Village
- Other maps and supporting documents from Sumber Village.

Equipment

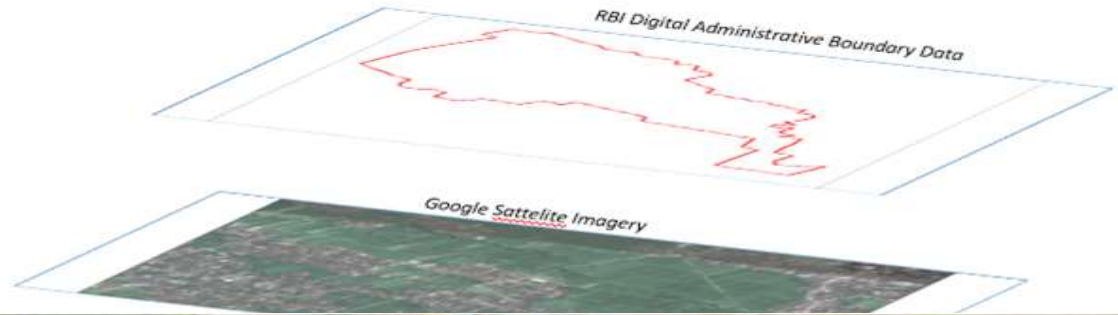
- Personal Computer/ Laptop
- GPS
- ArcGIS
- Workmap



Research Flowchart

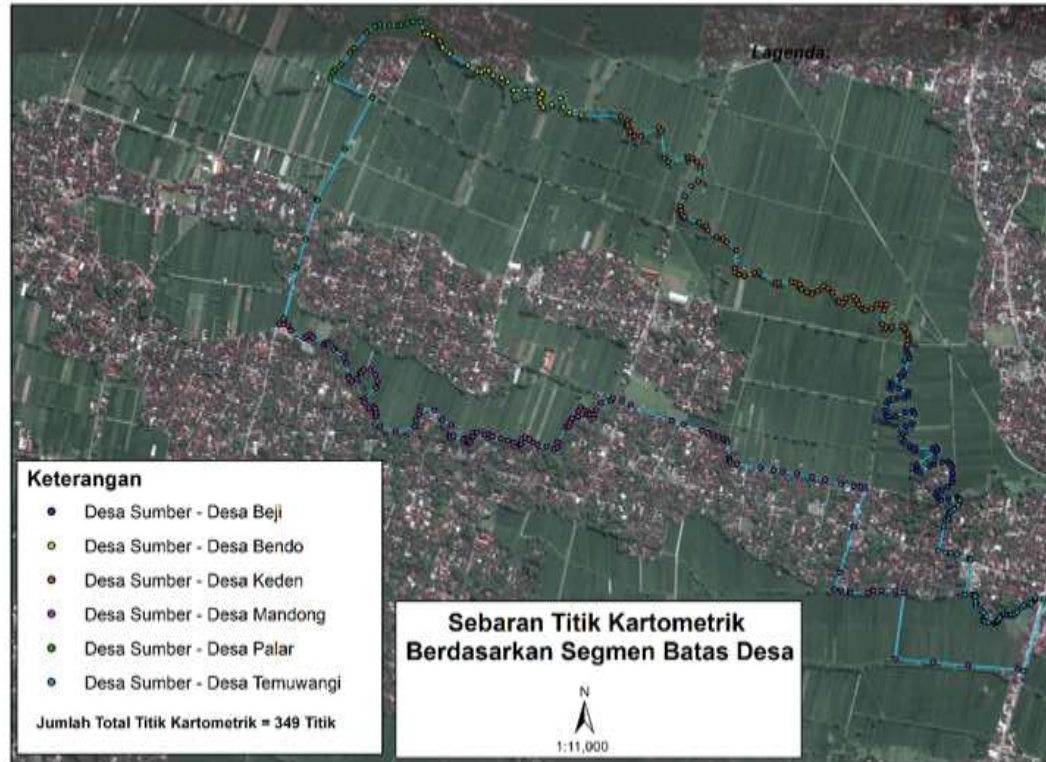


Overlay RBI Digital Administrative Boundary Data on Google Sattelite Imagery

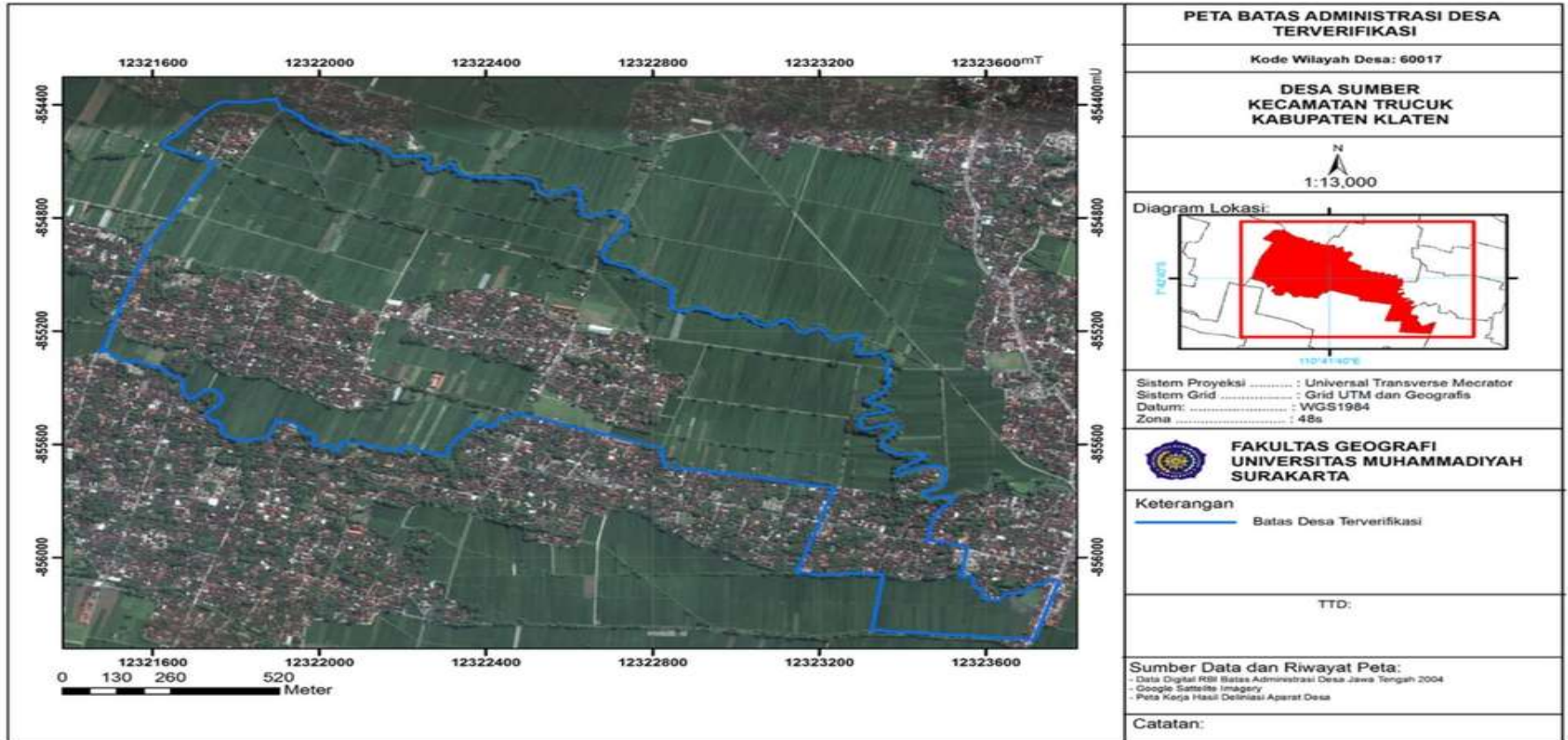


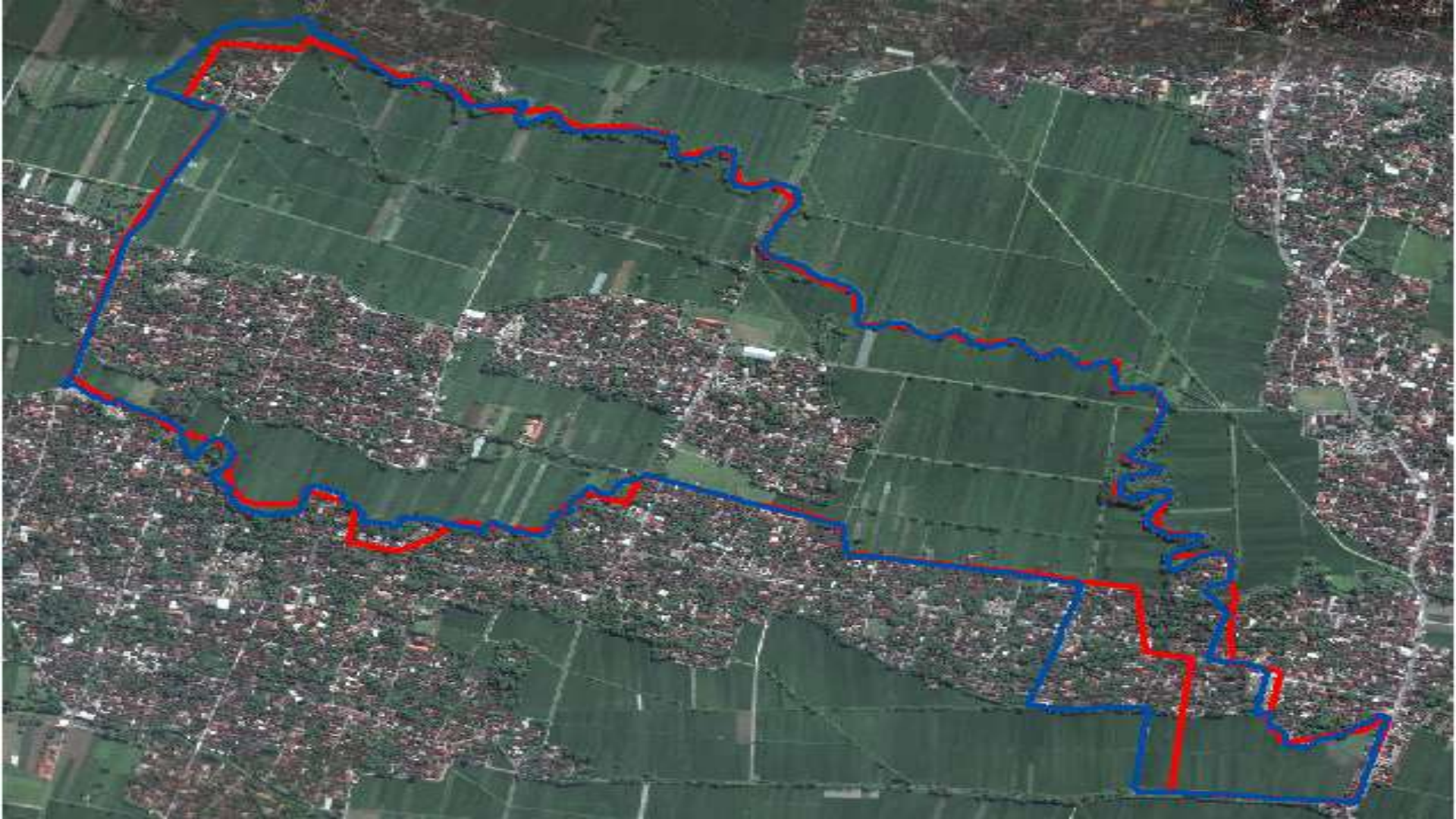
RESULT

FID	Shape *	ORG_FID	TK	Keterangan
312	Point	0	TKS.33.331.3310060.00017-3310146.140607-001	Desa Sumber - Desa Palar
313	Point	0	TKS.33.331.3310060.00017-3310146.140607-001	Desa Sumber - Desa Palar
314	Point	0	TKS.33.331.3310060.00017-3310146.140607-001	Desa Sumber - Desa Palar
315	Point	0	TKS.33.331.3310060.00017-3310146.140607-001	Desa Sumber - Desa Palar
316	Point	0	TKS.33.331.3310060.00017-3310146.140607-001	Desa Sumber - Desa Palar
317	Point	0	TKS.33.331.3310060.00017-3310146.140607-001	Desa Sumber - Desa Palar
318	Point	0	TKS.33.331.3310060.00017-3310146.140607-001	Desa Sumber - Desa Palar
319	Point	0	TKS.33.331.3310060.00017-3310146.140607-001	Desa Sumber - Desa Palar
320	Point	0	TKS.33.331.3310060.00017-3310146.140607-001	Desa Sumber - Desa Palar
321	Point	0	TKS.33.331.3310060.00017-3310146.140607-001	Desa Sumber - Desa Palar
322	Point	0	TKS.33.331.3310060.00017-3310146.140607-001	Desa Sumber - Desa Palar
323	Point	0	TKS.33.331.3310060.00017-3310146.140607-001	Desa Sumber - Desa Palar
324	Point	0	TKS.33.331.3310060.00017-3310146.140607-001	Desa Sumber - Desa Palar
325	Point	0	TKS.33.331.3310060.00017-3310146.140607-001	Desa Sumber - Desa Palar
326	Point	0	TKS.33.331.3310060.00017-3310146.140607-001	Desa Sumber - Desa Palar
327	Point	0	TKS.33.331.3310060.00017-3310146.140607-001	Desa Sumber - Desa Palar
328	Point	0	TKS.33.331.3310060.00017-3310146.140607-001	Desa Sumber - Desa Palar
329	Point	0	TKS.33.331.3310060.00017-3310146.140607-001	Desa Sumber - Desa Palar
330	Point	0	TKS.33.331.3310060.00017-3310146.140607-001	Desa Sumber - Desa Palar
331	Point	0	TKS.33.331.3310060.00017-3310146.140607-001	Desa Sumber - Desa Palar
332	Point	0	TKS.33.331.3310060.00017-3310146.140607-001	Desa Sumber - Desa Palar
333	Point	0	TKS.33.331.3310060.00017-3310146.140607-001	Desa Sumber - Desa Palar
334	Point	0	TKS.33.331.3310060.00017-3310146.140607-001	Desa Sumber - Desa Palar
335	Point	0	TKS.33.331.3310060.00017-3310146.140607-001	Desa Sumber - Desa Palar
336	Point	0	TKS.33.331.3310060.00017-3310146.140607-001	Desa Sumber - Desa Palar
337	Point	0	TKS.33.331.3310060.00017-3310146.140607-001	Desa Sumber - Desa Palar
338	Point	0	TKS.33.331.3310060.00017-3310146.140607-001	Desa Sumber - Desa Palar
339	Point	0	TKS.33.331.3310060.00017-3310146.140607-001	Desa Sumber - Desa Palar
340	Point	0	TKS.33.331.3310060.00017-3310146.140607-001	Desa Sumber - Desa Palar
341	Point	0	TKS.33.331.3310060.00017-3310146.140607-001	Desa Sumber - Desa Palar
342	Point	0	TKS.33.331.3310060.00017-3310146.140607-001	Desa Sumber - Desa Palar
343	Point	0	TKS.33.331.3310060.00017-3310146.140607-001	Desa Sumber - Desa Palar
344	Point	0	TKS.33.331.3310060.00017-3310146.140607-001	Desa Sumber - Desa Palar
345	Point	0	TKS.33.331.3310060.00017-3310146.140607-001	Desa Sumber - Desa Palar
346	Point	0	TKS.33.331.3310060.00017-3310146.140607-001	Desa Sumber - Desa Palar
347	Point	0	TKS.33.331.3310060.00017-3310146.140607-001	Desa Sumber - Desa Palar
348	Point	0	TKS.33.331.3310060.00017-3310146.140607-001	Desa Sumber - Desa Palar
349	Point	0	TKS.33.331.3310060.00017-3310146.140607-001	Desa Sumber - Desa Palar



Verified Village Administrative Boundary





ANALYSIS



Segment Wide and Long Differences

Digital RBI 2004 Data	Verified Village Administrative Boundary
153.4 hectare	160 hectare

Digital RBI 2004 Data	Verified Village Administrative Boundary
8056.7 meters	8942.7 meters

CONCLUSION

- Local knowledge is a primary basis in identification of village administrative boundary of Sumber Village, Trucuk Sub-district, Klaten Regency, Central Java Province.
- Cartometric Method is an efficient way If used based on local knowledge of village apparatus in identification village administrative boundary.
- There are four very striking segment differences in this research; Sumber Village-Temuwangi Village 1 segment, Sumber Village-Mandong Village 2 segments, and Sumber Village-Palar Village 1 segment,
- There are differences about wide and length in verified village administrative boundary, both of them are wider and longer than the original boundary from RBI

Thanks

