



Trends in Surveying: Indoor 3D Mobile Mapping

John W Allan
VP Sales & Marketing
GeoSLAM Ltd

The global leader in 'go-anywhere' 3D mobile mapping technology



Who We Are...

GeoSLAM is a global market leader in “go-anywhere” 3D mobile mapping technology. Our unique handheld SLAM based LIDAR is highly versatile and adaptable to all environments especially spaces that are indoor, underground or difficult to access, providing accurate 3D mobile mapping without the need for GPS.

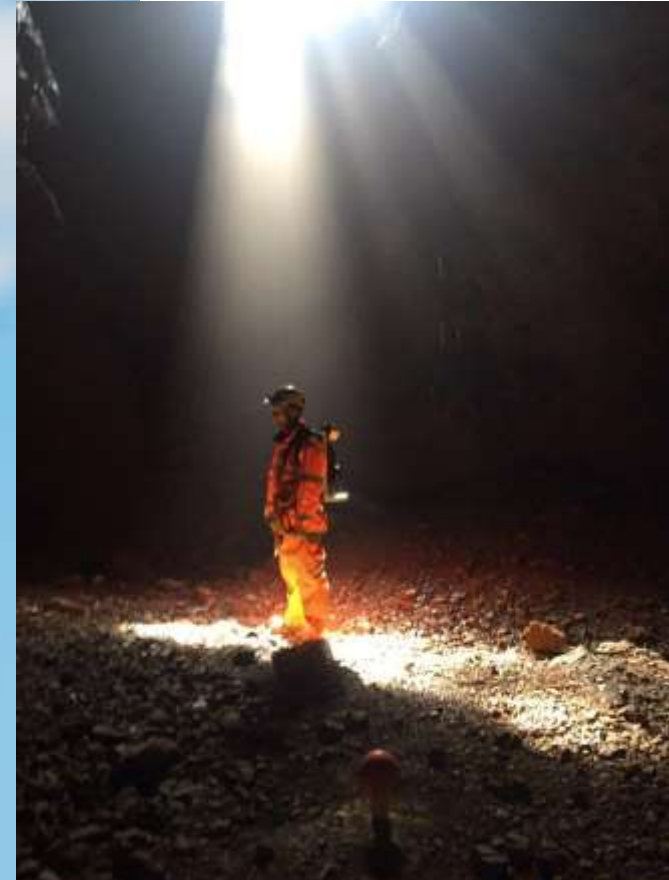
In 2093.....



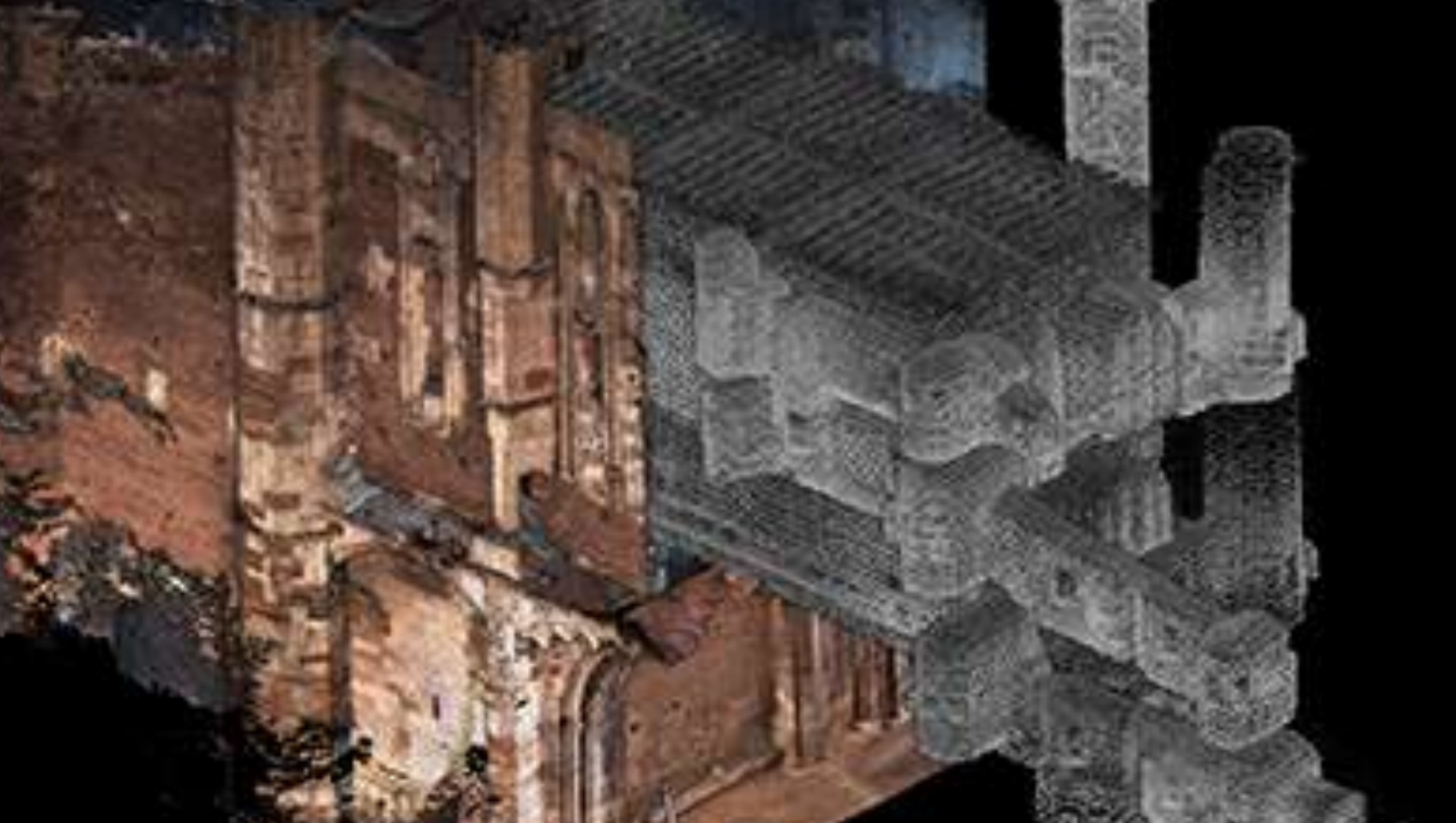
Where are we today?.....nearly there!



Where are we today?.....nearly there!





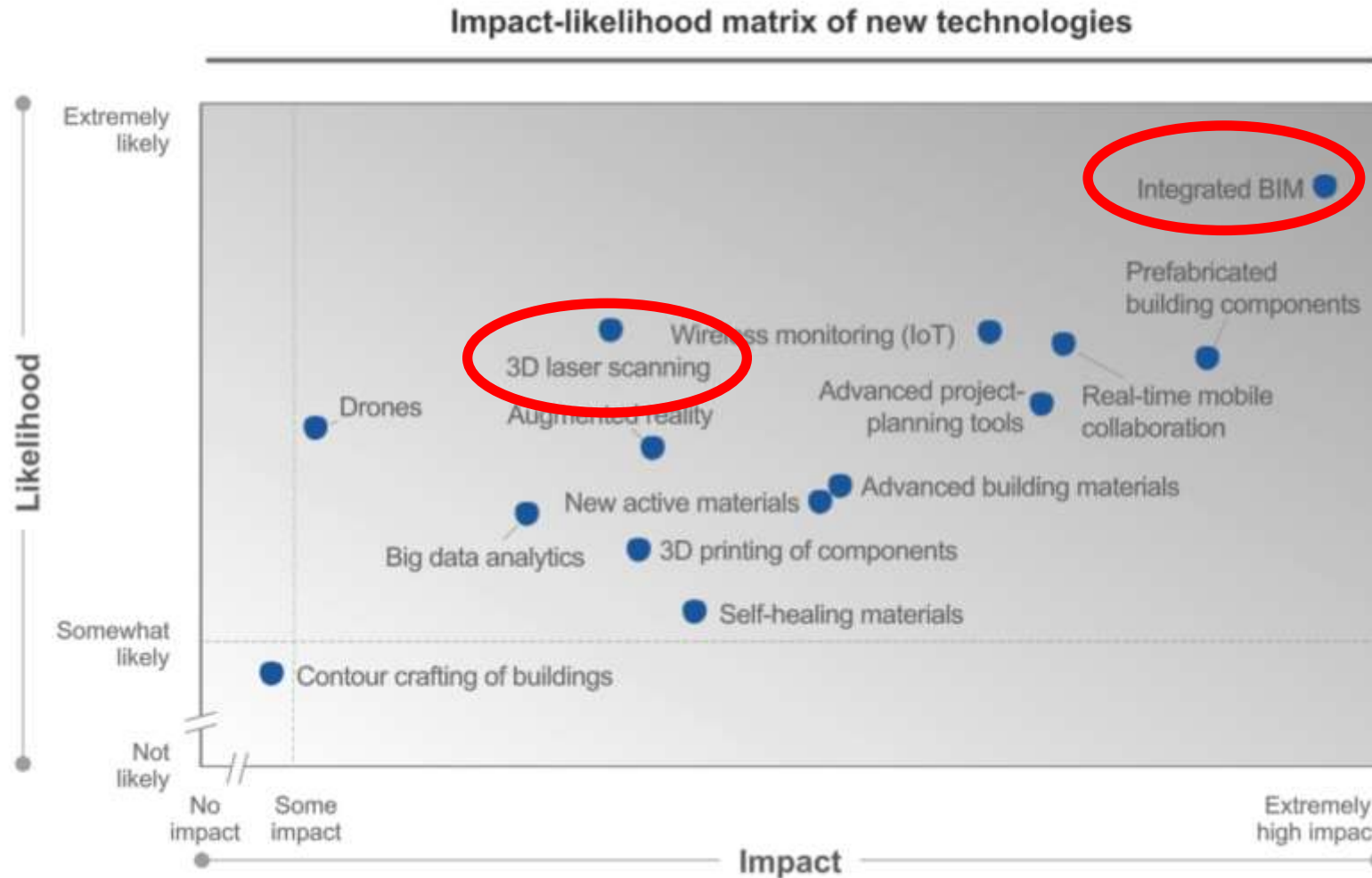


Disruptive Trends



Trends in Construction

Figure 20: Future Impact and Likelihood of New Technologies



Source: Future of Construction Survey

Boston Consulting Group

How long to scan a 3000 room hotel?

Stat

- 30
- 12
- (a
- 40
- 75

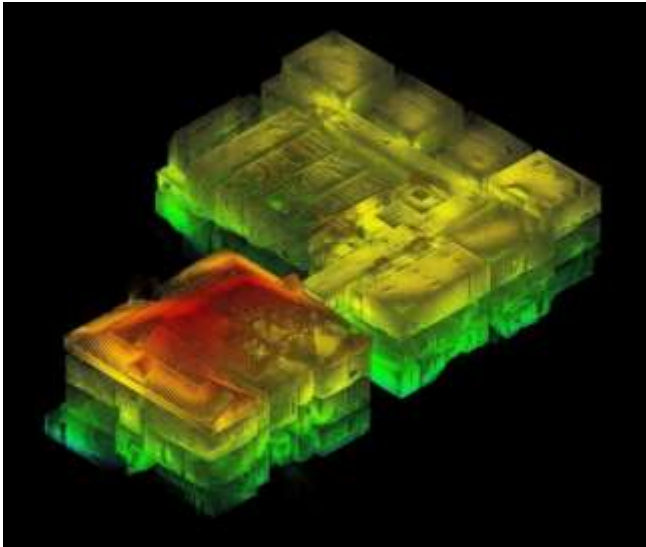


tal

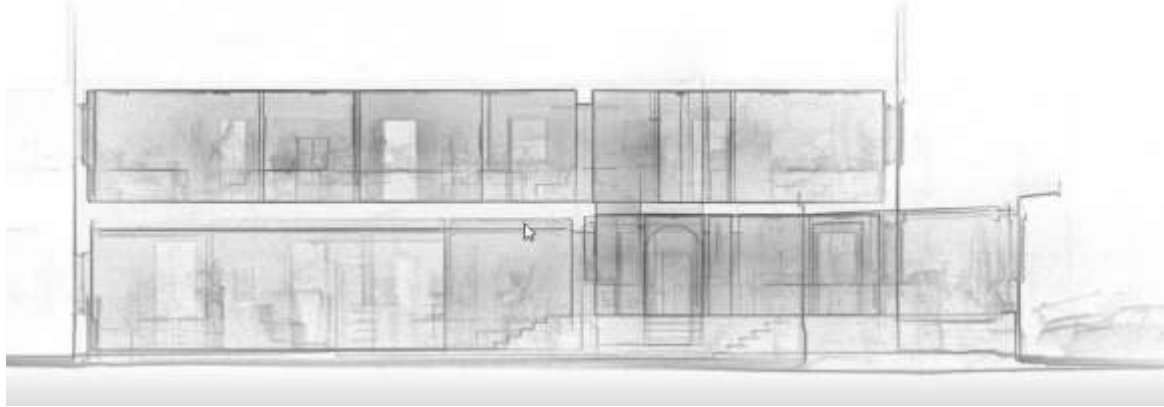
Scan to BIM



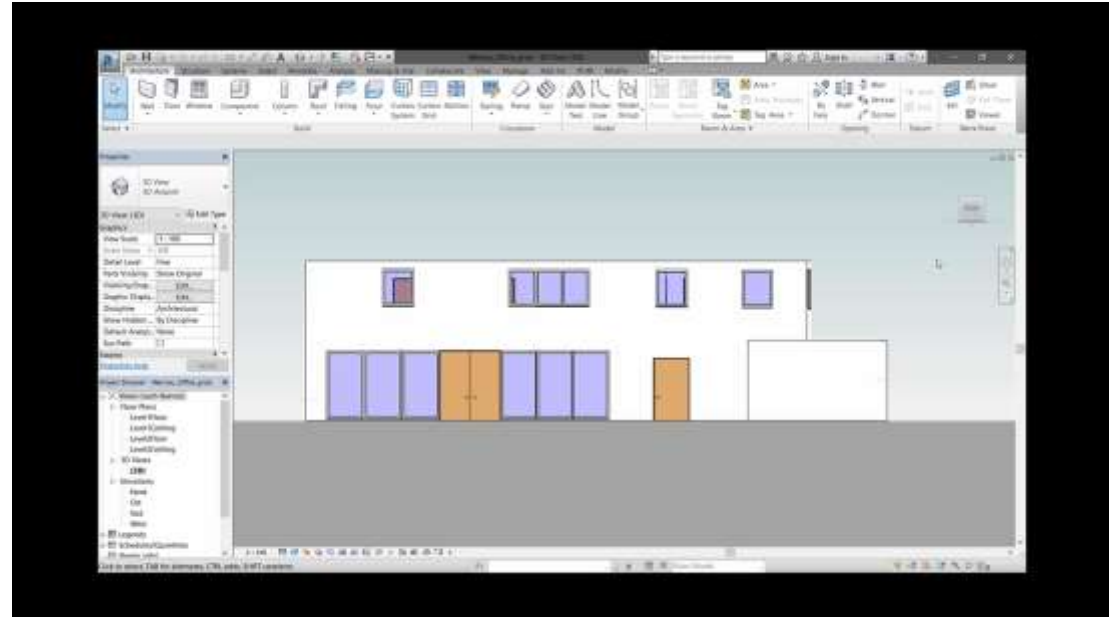
Scan to BIM

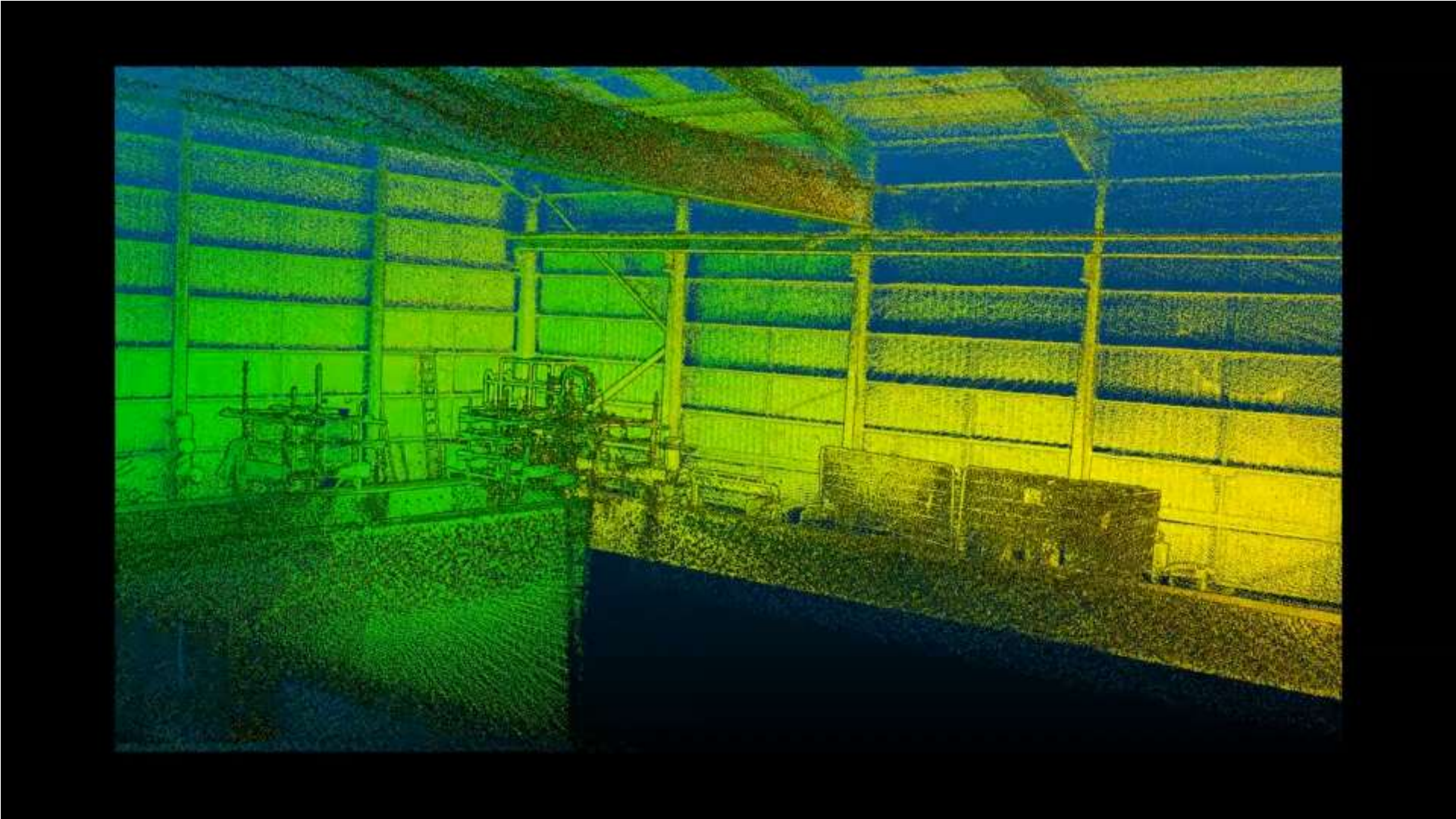


Scan to BIM.....



...in 90 minutes







Summary

- **SLAM technology will inevitably become integral to all scanning**
 - Makes everything truly mobile!
- **80% cost and time savings in indoor scanning projects opens up many new applications**
 - Integrated BIM
 - Construction Verification etc
- **Rapid and semi automated BIM Model creation is the next challenge**
- **FinallyIntegrated BIM - is it Indoor GIS?**



Thank You Questions?

john.allan@geoslam.com

The global leader in 'go-anywhere' 3D mobile mapping technology.

