



Location Intelligence for Public Safety and Emergency Management

Introduction



- Mahesh Patel
- Polaris Wireless: Silicon Valley based Mobile Device Location Technology Company
- Chief Innovation Officer @ Polaris Wireless
- 15 years experience in mobile device location technology and intelligence domain

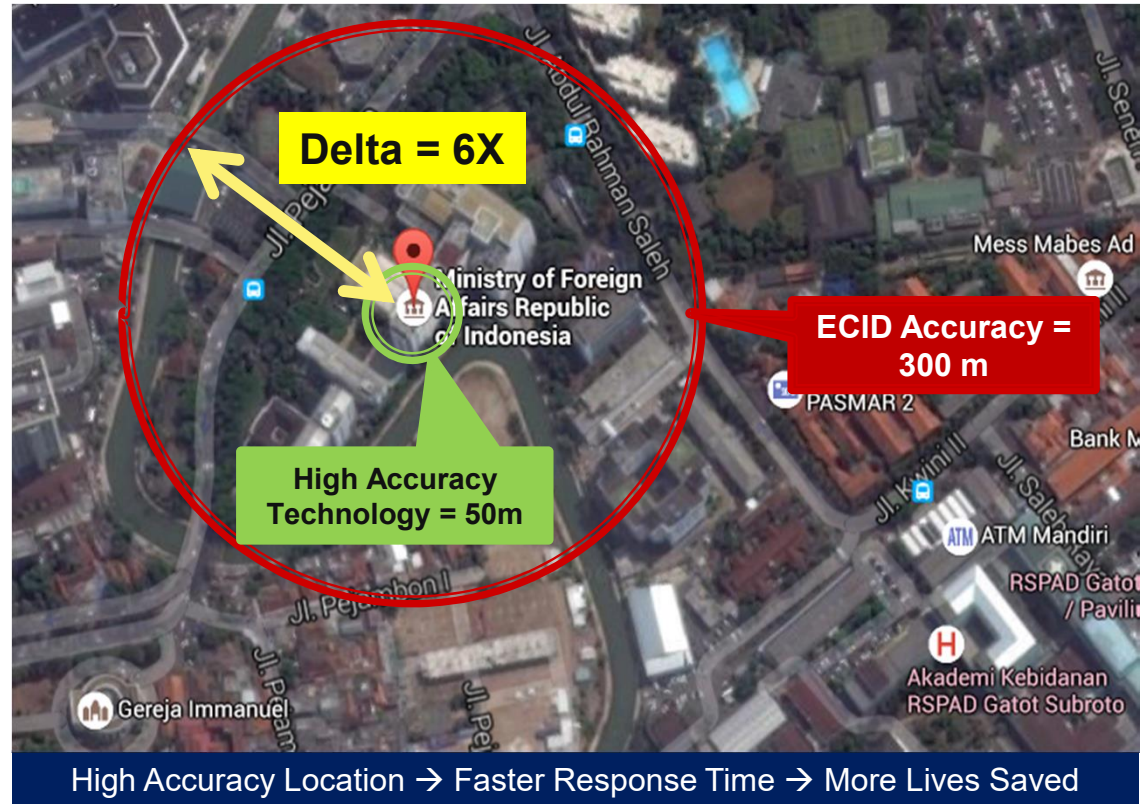
Agenda

1. Introduction
2. Importance of Accurate Location Intelligence
3. Emergency Call Location Intelligence
4. Mass Emergency Location Intelligence
5. About Polaris Wireless
6. Q&A

Public Safety and Emergency Management

High Accuracy is Critical

1. High accuracy location technologies deliver **>>6X performance** as compared to Enhanced Cell-ID (ECID)
2. ECID costs less but Government Agencies need to deploy at least 36X more resources



Public Safety and Emergency Management

- High Accuracy at scale is also Critical

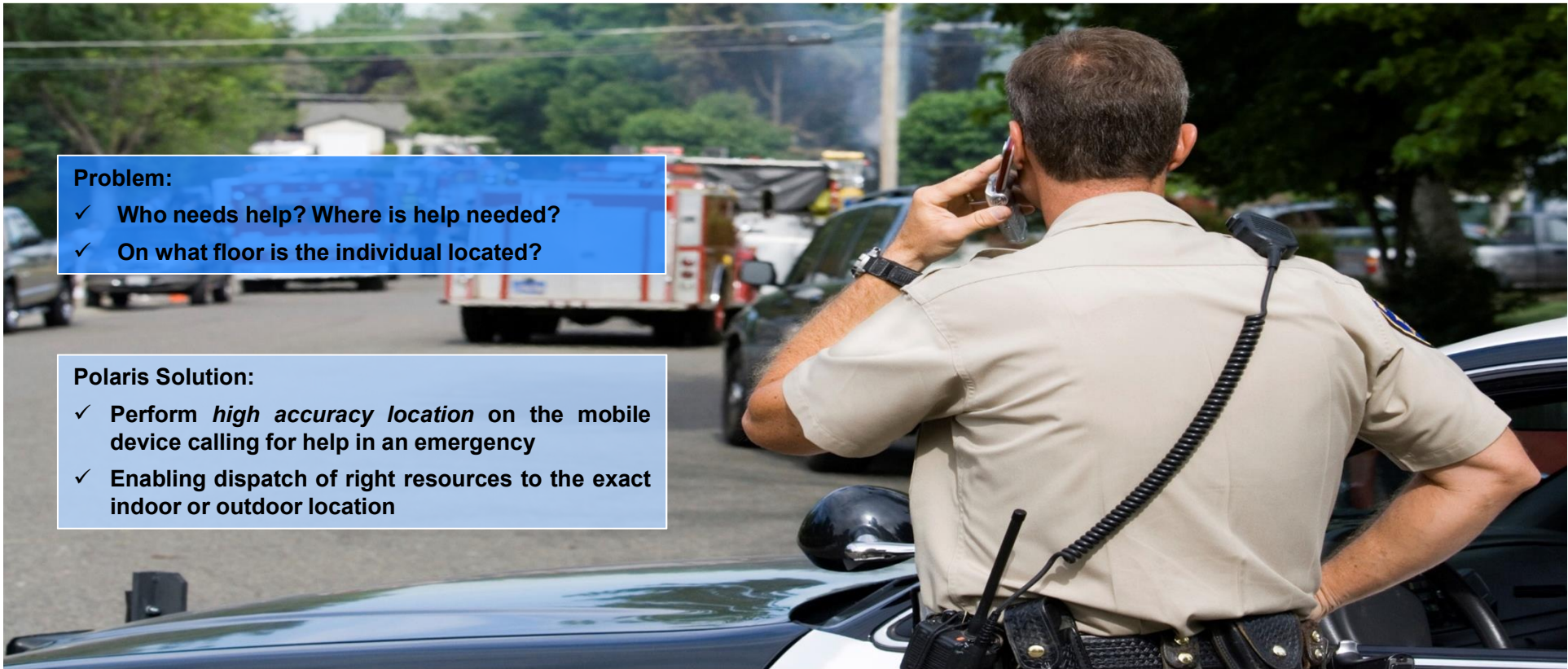




Location Intelligence for **Emergency Caller**

Emergency Caller

Dispatch help efficiently to the exact location of the emergency caller



Problem:

- ✓ Who needs help? Where is help needed?
- ✓ On what floor is the individual located?

Polaris Solution:

- ✓ Perform *high accuracy location* on the mobile device calling for help in an emergency
- ✓ Enabling dispatch of right resources to the exact indoor or outdoor location

Emergency Caller

Automatically Locating Emergency Callers in Real-Time



The background is an aerial satellite map of a residential area. Labels on the map include 'Selangor', 'Putrajaya', 'Persiaran Barat', 'FASA 4B PRESINT 8', 'FASA 4C PRESINT 8', 'PRESINT 8', and 'PRESINT 2'. A red location pin is placed on the map near 'PRESINT 2'. Three callout boxes with red borders and white text are overlaid on the map. Two inset images are also present: one of a call center operator and one of a damaged blue car.

Operator to Driver:
“999 – what’s your emergency?”

Operator to First Responders:
“Car accident on Persiaran Perdana, please dispatch medic, fire and police teams to the scene immediately.”

Driver to Operator:
“Help! I’ve had a car accident! And I am disoriented”

The Polaris platform enables **automatic real-time accurate caller location** of emergency callers,
Polaris platform is US FCC E911 Phase 2 compliant (the most stringent accuracy requirements in the world)
Polaris platform is field proven in saving human lives by precisely locating callers, both indoors and outdoors, within seconds.

Accurate Emergency Caller Location

Benefits



1. Save lives

- Reduces response time for first responder
- Send proper personal/equipment (access to location may be only by foot or small vehicles)
- Accurate tracking in kidnapping/abduction or other hostile scenarios

2. Automatically and accurately locates the emergency caller

- Many emergency callers may not know their exact location
- Easy to use by children and elderly

3. Easy to deploy

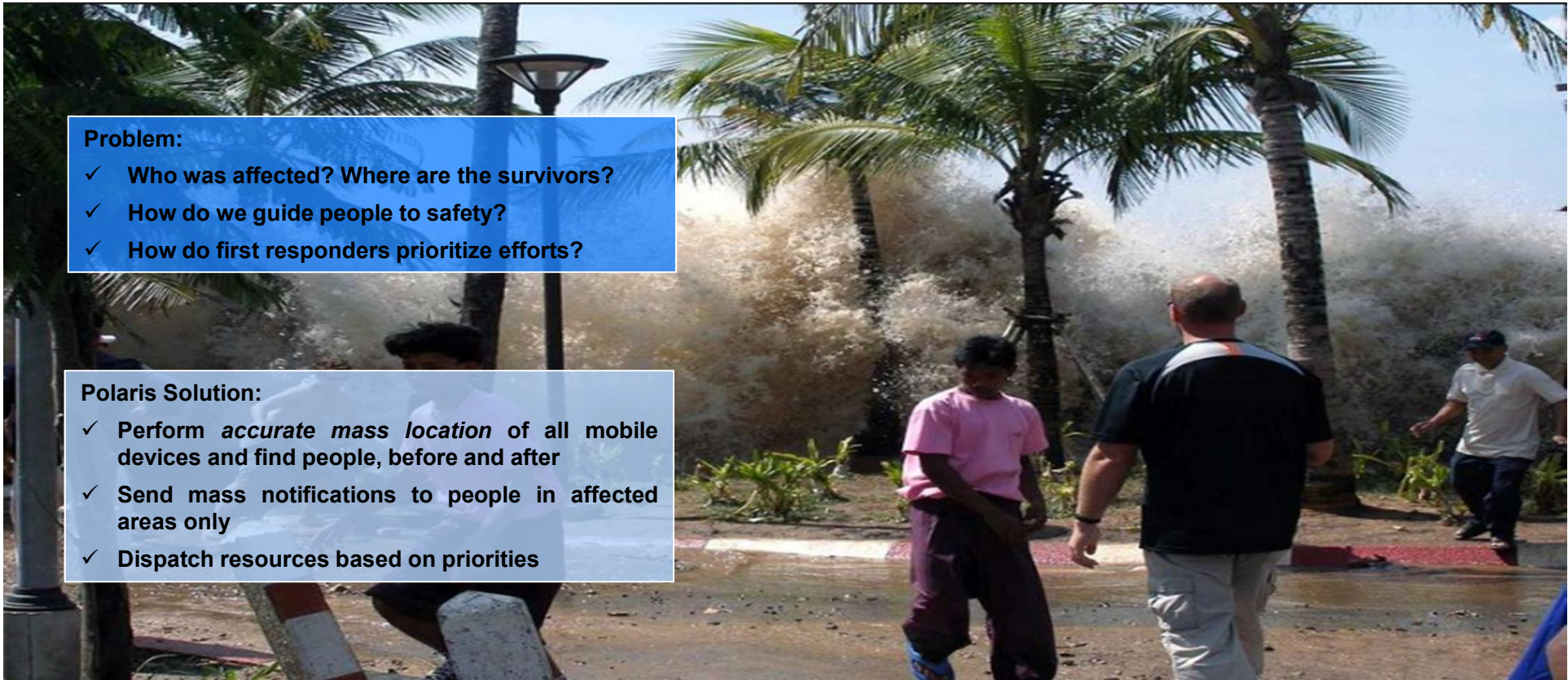
- No new software on handset; works for all types of handsets



Location Intelligence for **Mass Emergency Management**

Mass Emergency Management

Proactively manage emergencies using locations of impacted people and Blue Forces



Problem:

- ✓ Who was affected? Where are the survivors?
- ✓ How do we guide people to safety?
- ✓ How do first responders prioritize efforts?

Polaris Solution:

- ✓ Perform *accurate mass location* of all mobile devices and find people, before and after
- ✓ Send mass notifications to people in affected areas only
- ✓ Dispatch resources based on priorities

Mass Emergency Management

Notifying People In Area of Interest During Emergency

The image shows an aerial satellite view of a residential area with several callouts and an inset image. The callouts include:

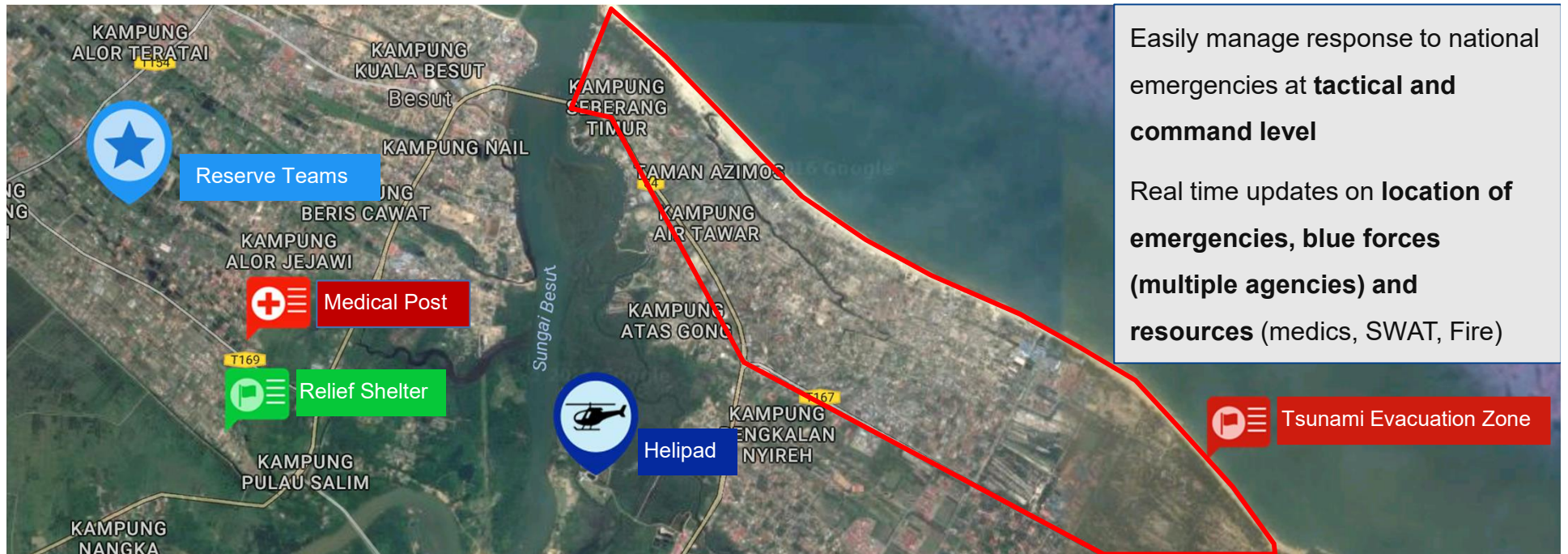
- Accurately determine impacted citizens and dispatch Emergency Alert** (white box with red border, top left)
- Emergency Alert: Evacuate area due to Gas Leak** (red box with white text, bottom left)
- "Gas Leak Reported in Area"** (white box with red border, bottom right)

The map features labels for 'Selangor', 'Putrajaya', 'Lebuh Sentosa', 'Persiaran Barat', 'FASA 4B PRESINT 8', 'FASA 4C PRESINT 8', and 'PRESINT 2'. A red outline on the map highlights a specific area containing several yellow circular markers. An inset image in the bottom left shows a person in a call center environment with the text 'Putrajaya Central' below it.

The platform enables real-time accurate mass location within an area of interest. First responders can send an SMS to only those people impacted in area, asking them to evacuate or take necessary precautions given the type of event.

Mass Emergency Management

Tracking and Collaboration between Blue Forces to ensure Unified Response



Mass Emergency Management

Post-Event Recovery Advantage



Accurate Location based Mass Emergency Management

Benefits



1. Identify and alert impacted public and reduce mass panic

- a. Send early warning notifications regarding potential emergencies
- b. Allow them to make evacuation plans and reduce mass panic among the people

2. Quickly locate survivors, public safety personnel and resources (doctors, ambulance etc.) to offer a holistic picture to command authorities for better planning & decision making

3. Utilize historical information for analysis leading to optimal deployment of resources for future preparedness

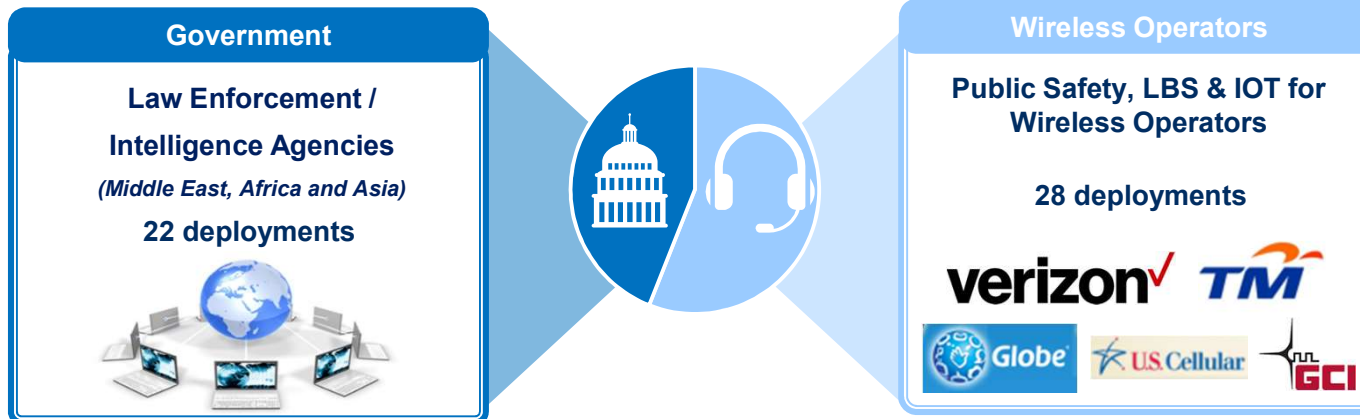
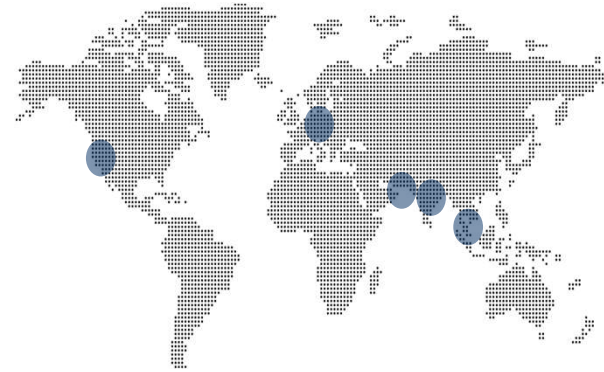


Polaris Wireless

About Polaris Wireless

Global Leader with a Global Presence

- Leader in software-based location solutions for wireless operators and government agencies for over 15 years
- Headquartered in the heart of Silicon Valley in Mountain View, CA
- Deep patent portfolio
- Backed by leading investors including Palisades Ventures and Industry Ventures



Facts & Figures – Polaris Wireless by the Numbers

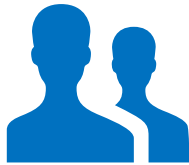


Polaris Wireless deployments cover **~475M mobile devices**
across 6.7M sq. km. of landmass
We accomplish this through:



Our People

~200



Employees

Our Presence

8



Countries Served

Our Product

70+



Patents Awarded or Pending

6



Partnerships with Resellers

5



Global Office Locations

50



Deployments Worldwide

Polaris Wireless Ecosystem

Business Partners

THALES

IBM

NOKIA

GLOBECOMM

ThalesAlenia
A Thales / Finmeccanica Company
Space

amazon
web services

Research Partners

STANFORD
UNIVERSITY

VirginiaTech
Invent the Future

COLUMBIA UNIVERSITY
IN THE CITY OF NEW YORK

Georgia
Tech

Carnegie Mellon University

McMaster
University

Vendor Partners

hp

redhat.

Microsoft
Windows
Server System

Microsoft
SQL Server

EMC²
where information lives

KEYSIGHT
TECHNOLOGIES

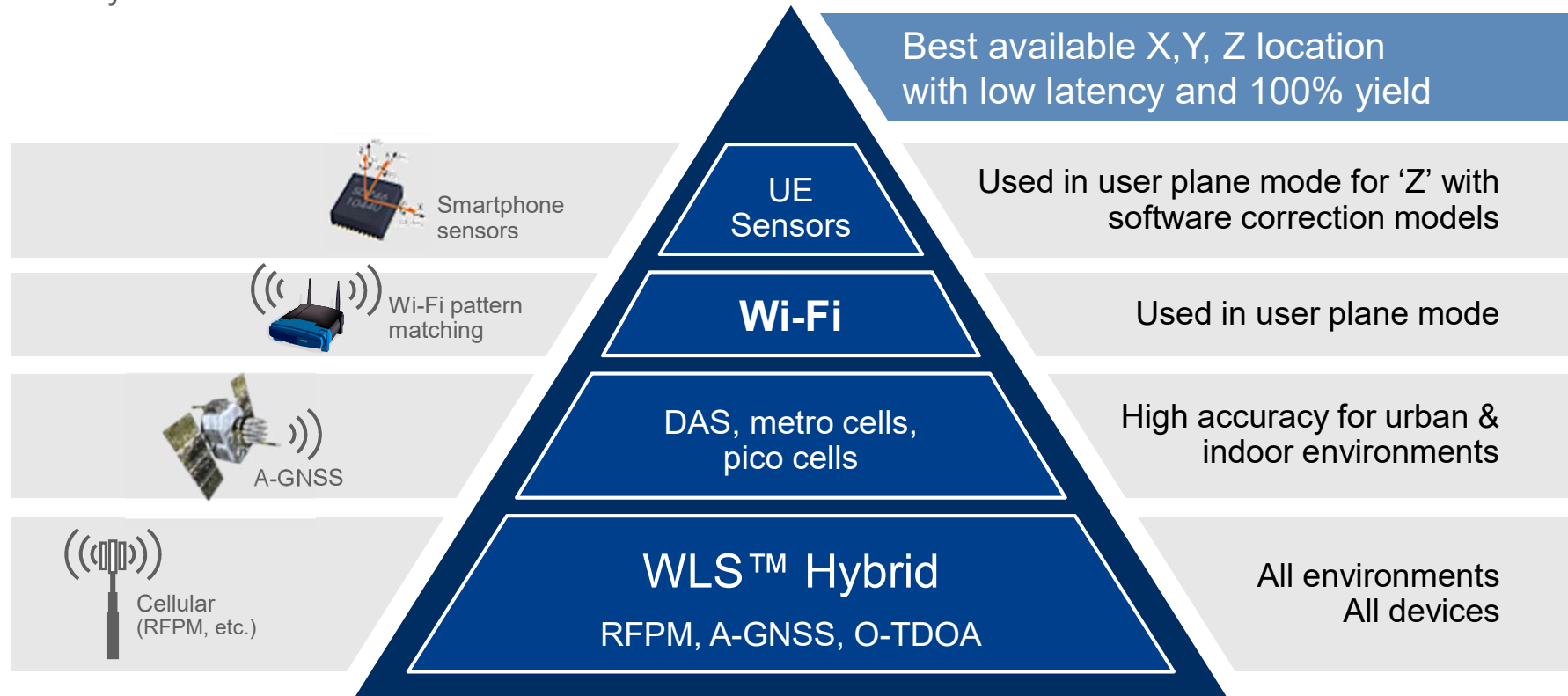
esri

map mechanics

DigitalGlobe

Products and Location Technologies

The Hybrid Stack



Products and Location Technologies

Hybrid Location – Matching Technology to Environment



INDOORS/
DENSE URBAN
URBAN

WLS



SUBURBAN

WLS
HYBRID



RURAL/REMOTE
AREAS

A-GPS/
ECID Hybrid

Products and Location Technologies

Introduction to Polaris Wireless Products

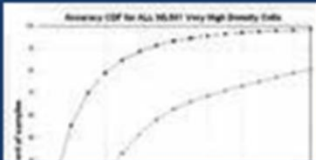


OmniLocate

Universal Location Platform

Platform that scales to meet any network requirements

OmniLocate offers a flexible, virtualized carrier-grade solution that is able to power the high-accuracy, high-volume demands of today's location-based services. OmniLocate easily adapts to any sized network, enabling customers to easily and cost-effectively increase or decrease capacity.



Accuracy chart depicting accuracy of WLS versus ECID



RF signal strength distribution map, which serves as an input for the WLS pattern matching algorithm



Mass snapshot: visualize all mobile activity in a given area



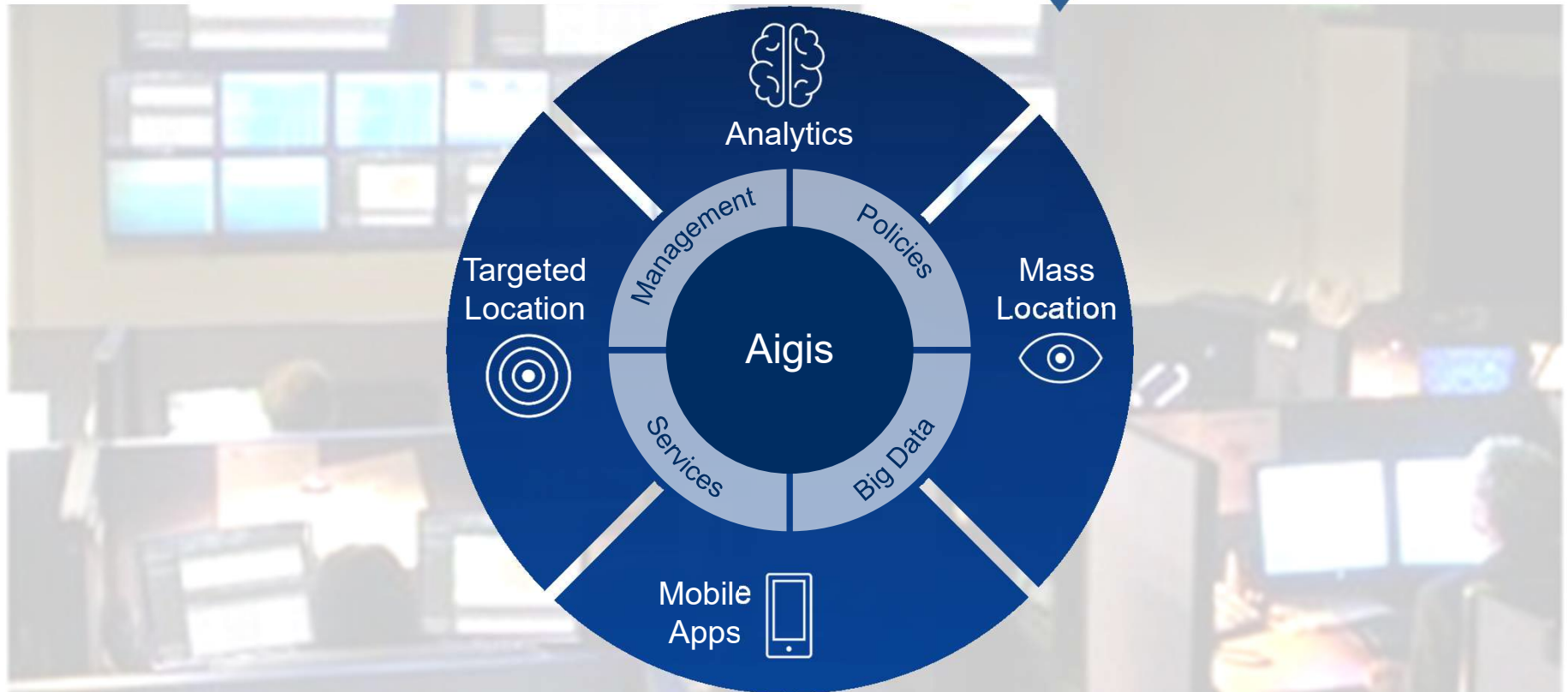
Locate and Track: the most used feature provided by OmniLocate

Products and Location Technologies

Introduction to Polaris Wireless Products



Aigis
Location Intelligence
Application Platform



Summary

High accuracy location & accurate mass location for emergency management

Highest accuracy and reliable location solution optimized for mission critical emergency management

Patented WLS technology delivers the best performance in challenging urban and indoor settings

Supports all mobile devices and air interfaces (2G, 3G, 4G) based on 3GPP standards

Highly scalable, software based solutions running on standard computer hardware

Commercially proven and deployed worldwide

Seasoned management and technology team with deep domain expertise

Q&A

Enhanced Situational Awareness for Blue Forces



We can help **remove challenges** and enable a **Unified Response** by Blue Forces

Easily manage response to national emergencies at **tactical and command level**

- Real time updates on **location of emergencies, blue forces (multiple agencies) and resources** (medics, SWAT, Fire) on ground for **enhanced** situational awareness
- Share **real-time “inside” data within blue forces** – not rumor or media to assess the situation on ground for **timely action**
- Use map annotations to **easily and clearly communicate plans/ information** to your teams/ other participating agencies
- Make operational intelligence available to blue forces by sharing **photos of suspects and suspicious vehicles** with all officers/ teams/ agencies

