

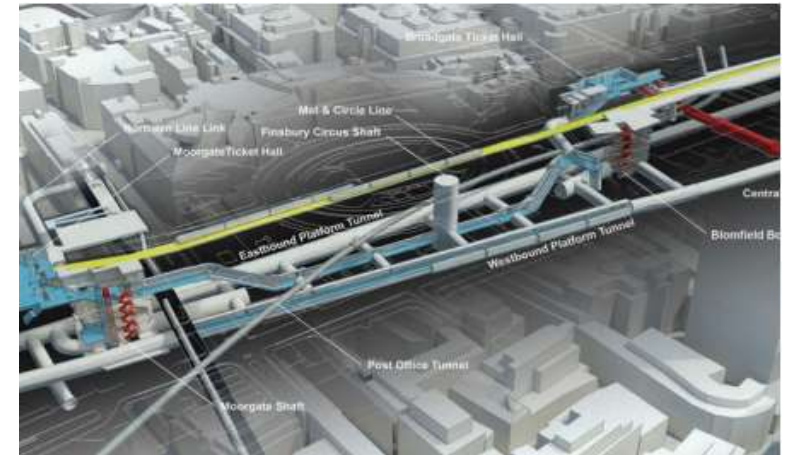


Advancing Smart City

Ken Soh
Principal Consultant



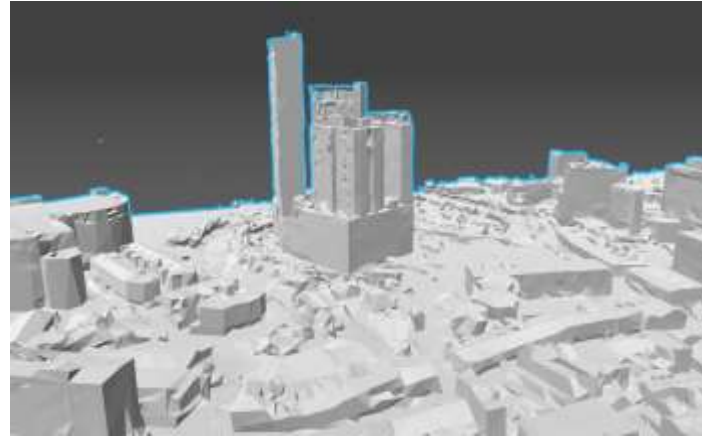
Why do Smart City need 3D?



Purpose-fit Solution requires 3D model of various Details



Base Map



Block Model



City Model



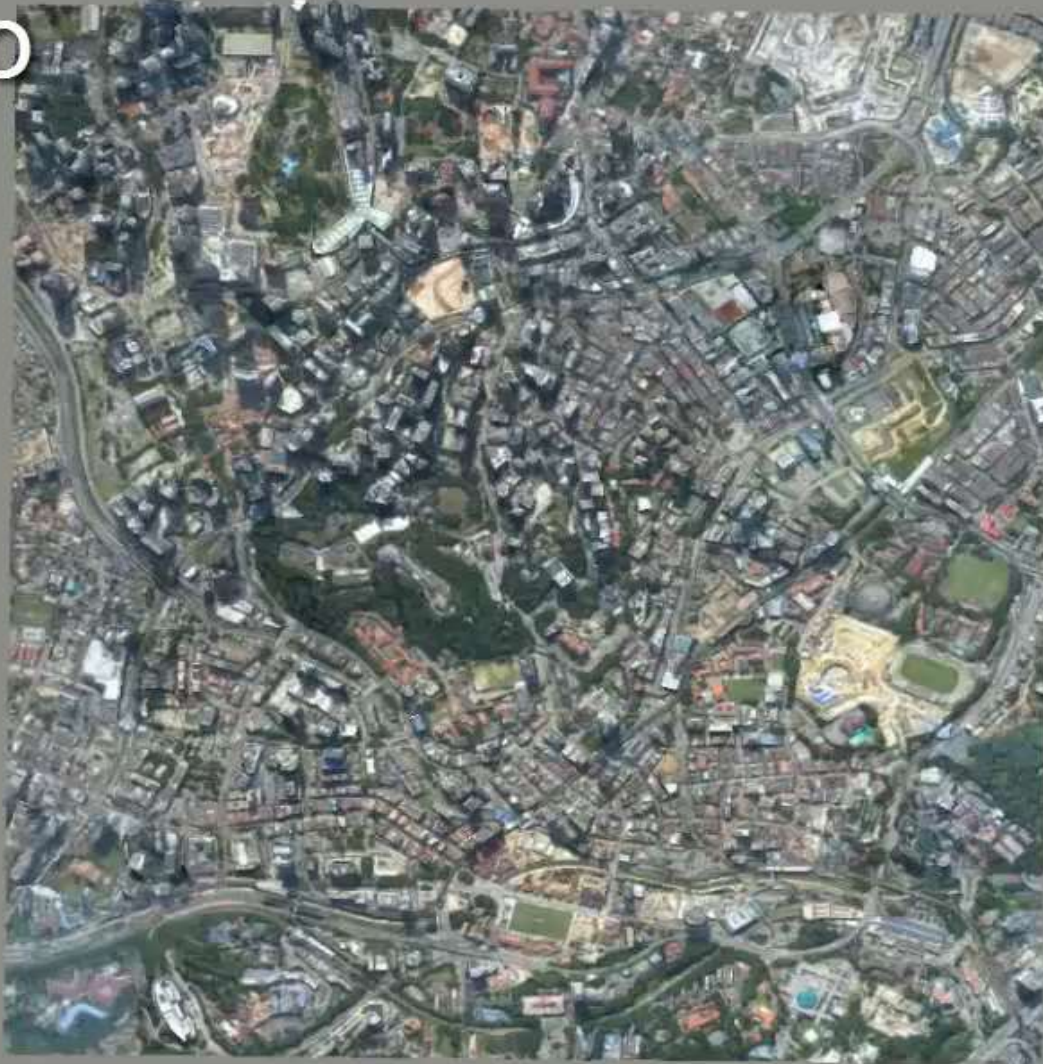
Architectural Model



Interior Model

3D Kuala Lumpur Model

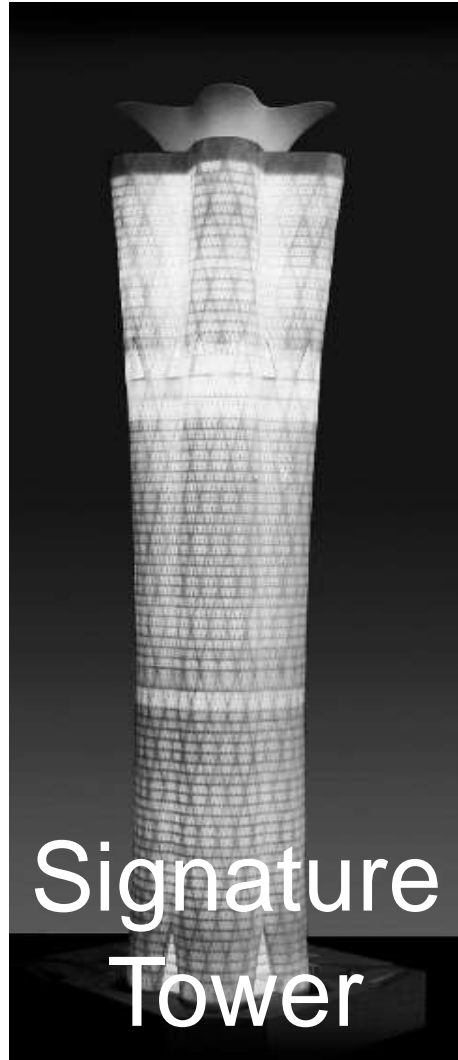
Base Map



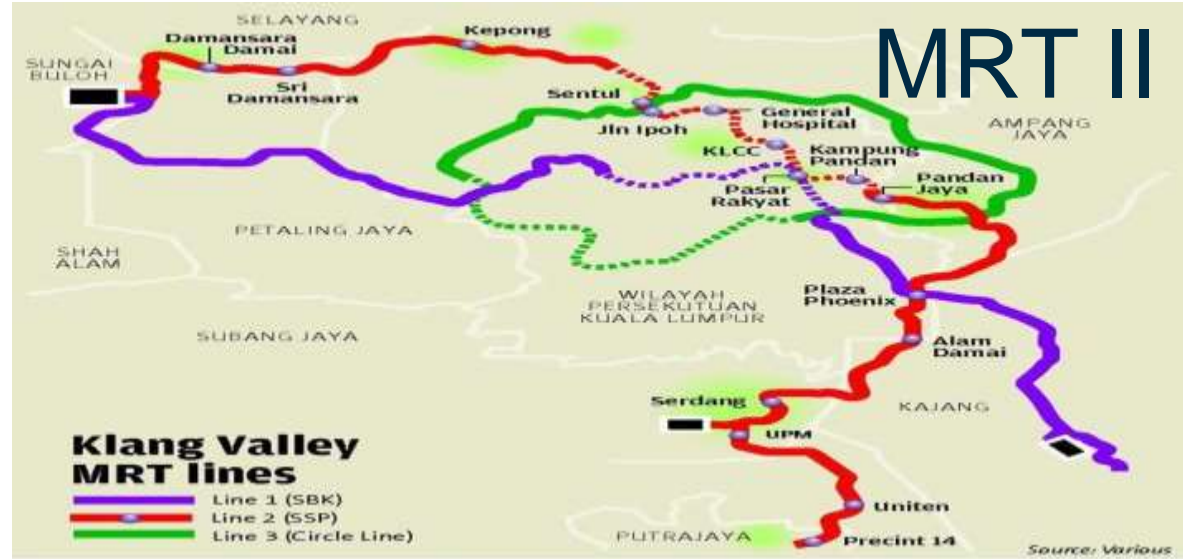
It is hard to build 3D City Model
But it is even harder to maintain a 3D City Model



KL118



Signature Tower

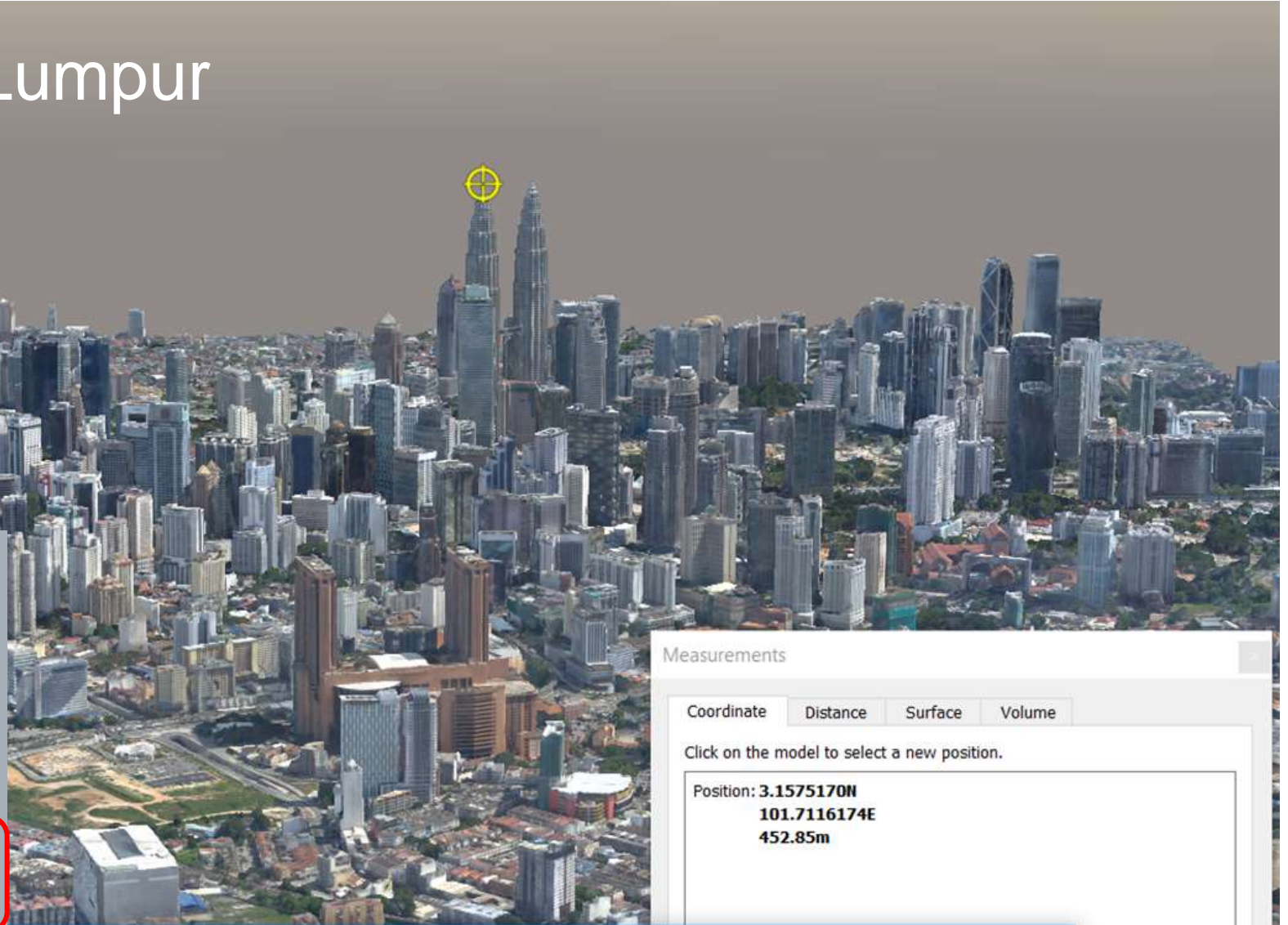


Bukit Jalil City

How long does it take to generate this 3D model?

- 20 km² of Kuala Lumpur

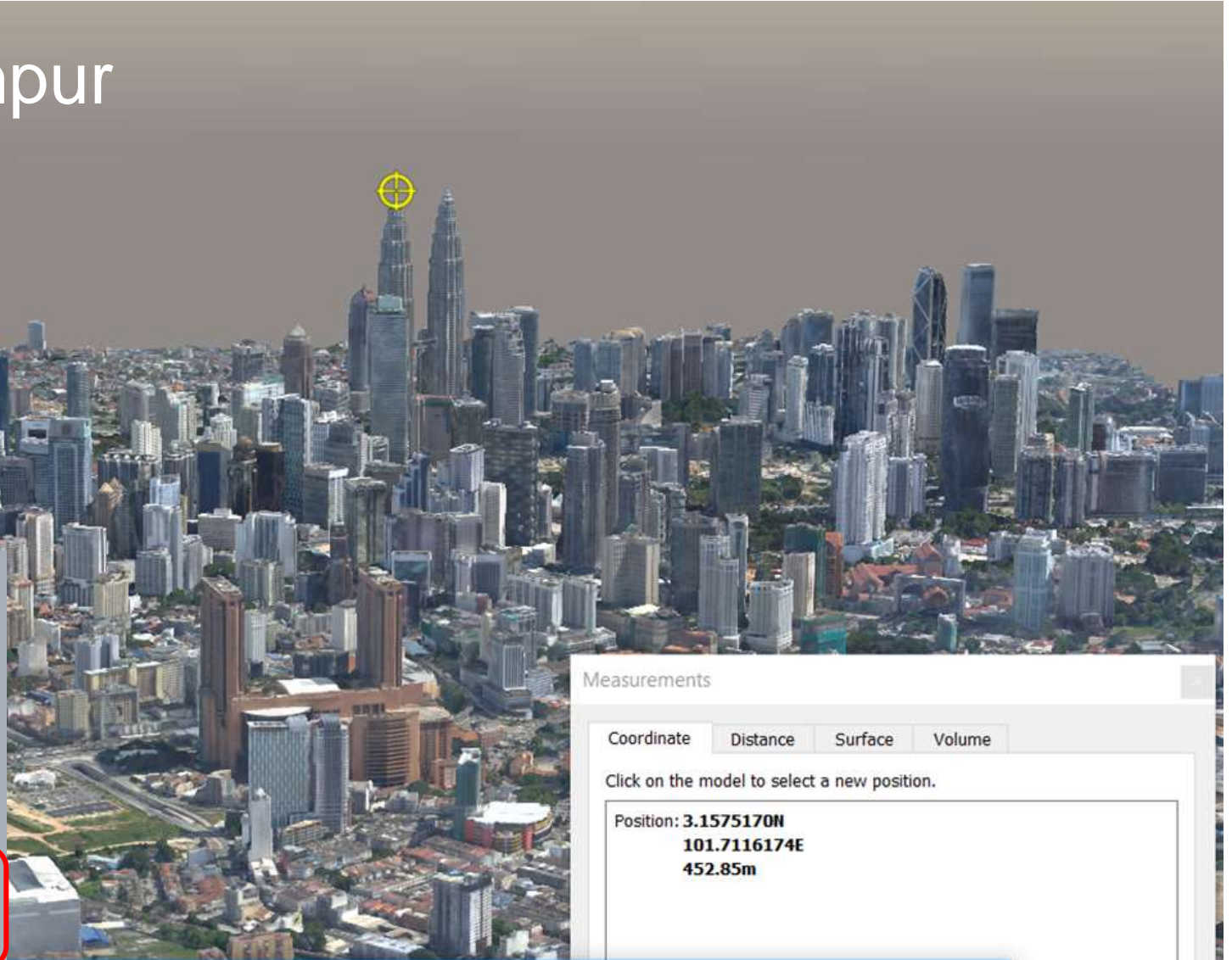
- A.) 3 months
- B.) 1 months
- C.) 2 weeks
- D.) 1 week**



How much does it take to generate this 3D model?

- 20 km² of Kuala Lumpur
- 2000 Photos

- A.) 3,000,000 MYR
- B.) 1,000,000 MYR
- C.) 500,000 MYR
- D.) 100,000 MYR**



Common Urban Problem across Asian Cities



Beijing shrouded in Smog



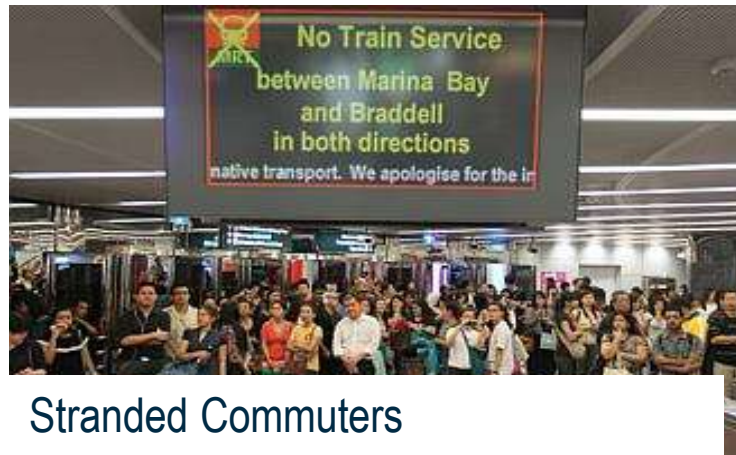
Jakarta Traffic



Chennai underwater



Kuala Lumpur affected by Haze



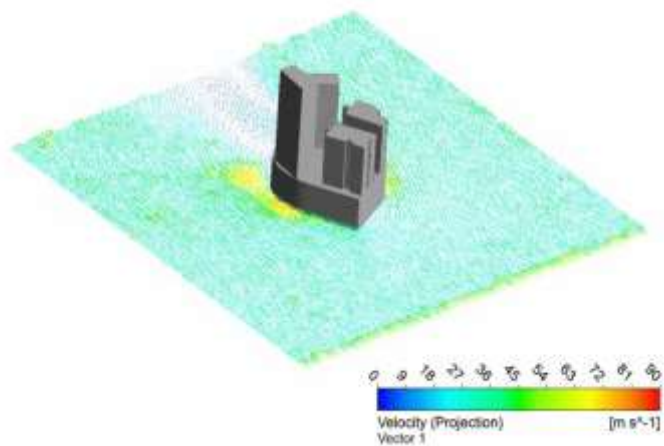
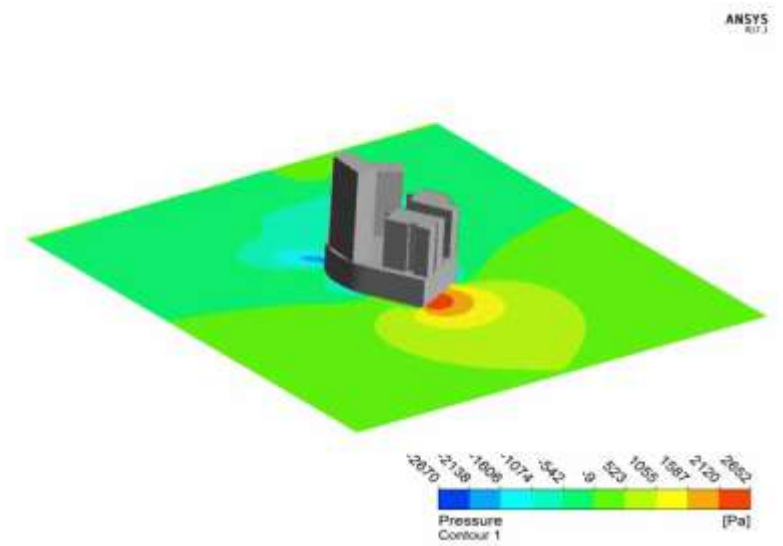
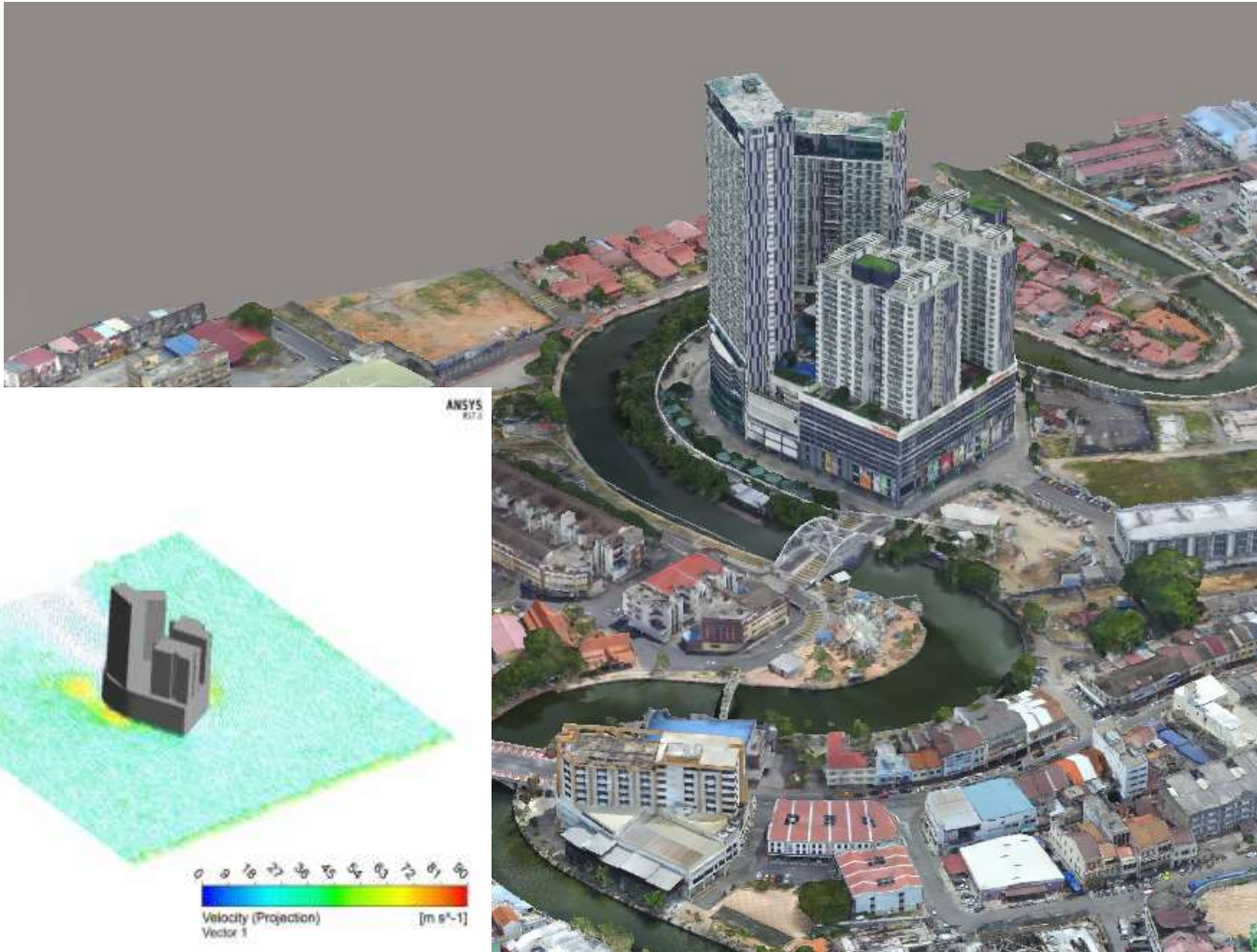
Stranded Commuters



Vietnam after Typhoon Ketsana

Sustainable Simulation is possible!

Urban Airflow Dynamic on The Shore Hotel & Residences , Melaka



Enhancing Urban Planning with 3D Mesh Model

