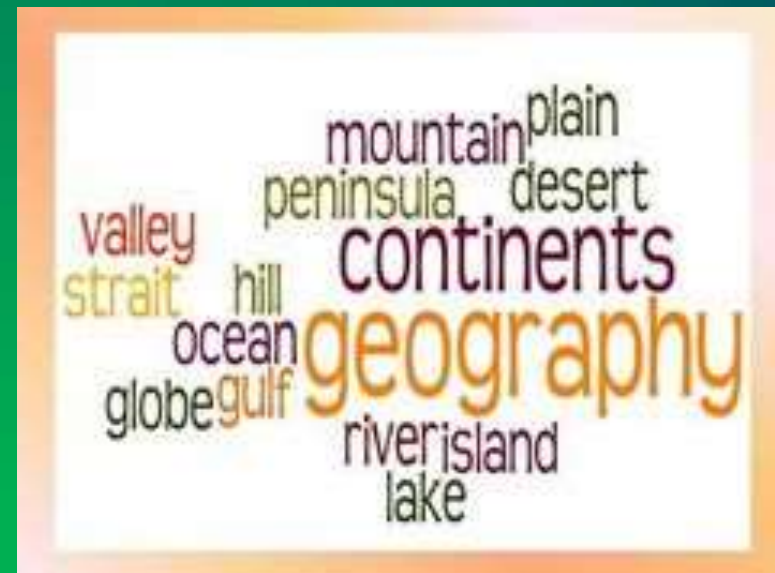


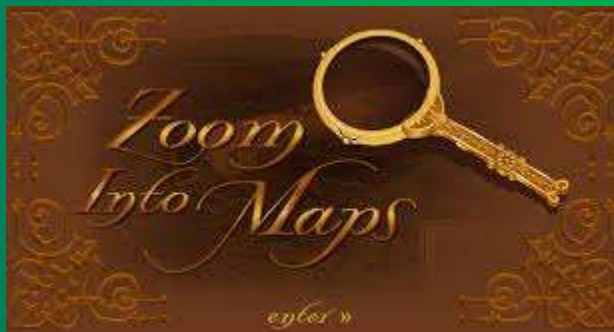
Geographical Names

Detailing maps and enhancing GIS



PRESENTATION STRUCTURE

- **Why geographic names?**
- **Who Decides What Names Go on a Map**
- **Significance and Standardization**
- **National agenda dan global awareness**



GEOGRAPHICAL NAMES

Standardisation of geographical names has become more important because of reference needs associated with the development of the communications and transport systems, production of high precision charts and maps and others. Standard geographical names can also identify and reflect culture, heritage and landscape.

Consistent and accurate use of geographical names can provide benefits to:

- a) **trade and commerce;**
- b) **national population censuses and statistics;**
- c) **property rights and cadastre;**
- d) **urban and regional planning;**
- e) **environmental management - sustainable development and conservation;**
- f) **natural disaster relief - emergency preparedness and receipt of aid;**
- g) **security strategy and peacekeeping operations;**
- h) **search and rescue operations;**
- i) **production of maps and atlases;**
- j) **automatic navigation;**
- k) **tourism; and**
- l) **communications, including news dissemination and postal services.**

For 125 years, a group you've never heard of has been helping create a common language for the world's place – geographical name



NATIONAL GEOGRAPHIC
CREATIVE

Geographical names bureau

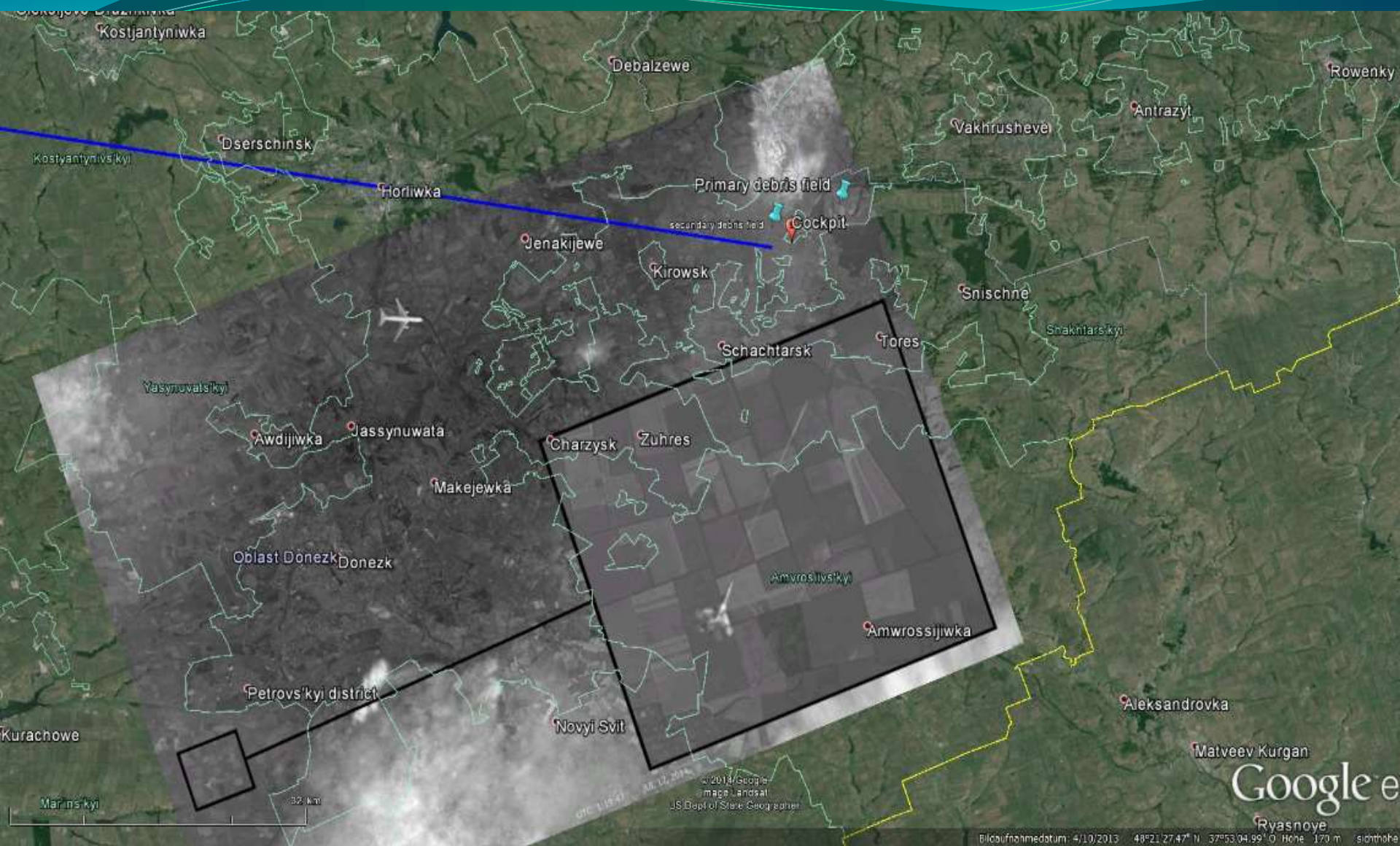
You are lost and want to find your way?



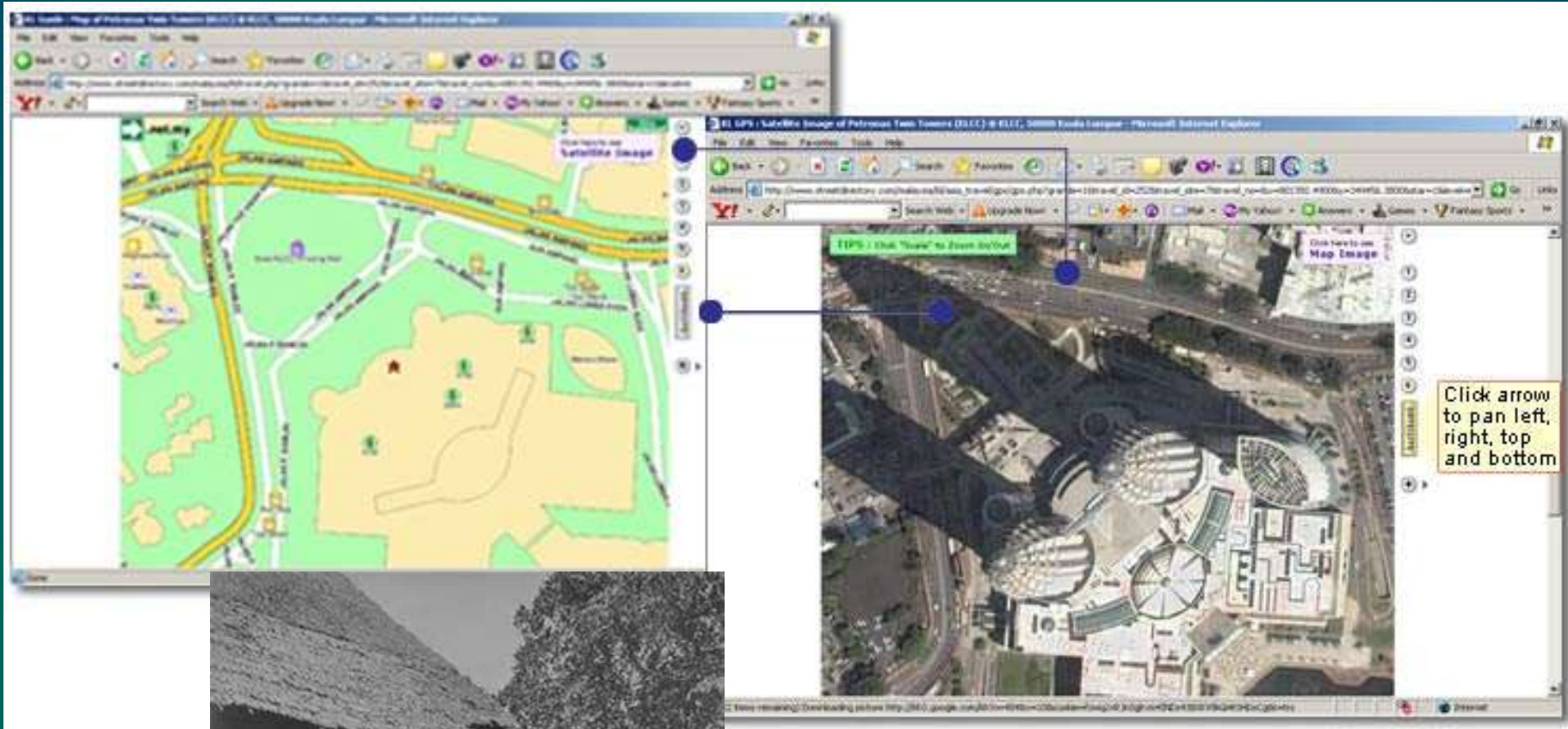
complementing geographical data....



matching geographical data



depicting geographical data

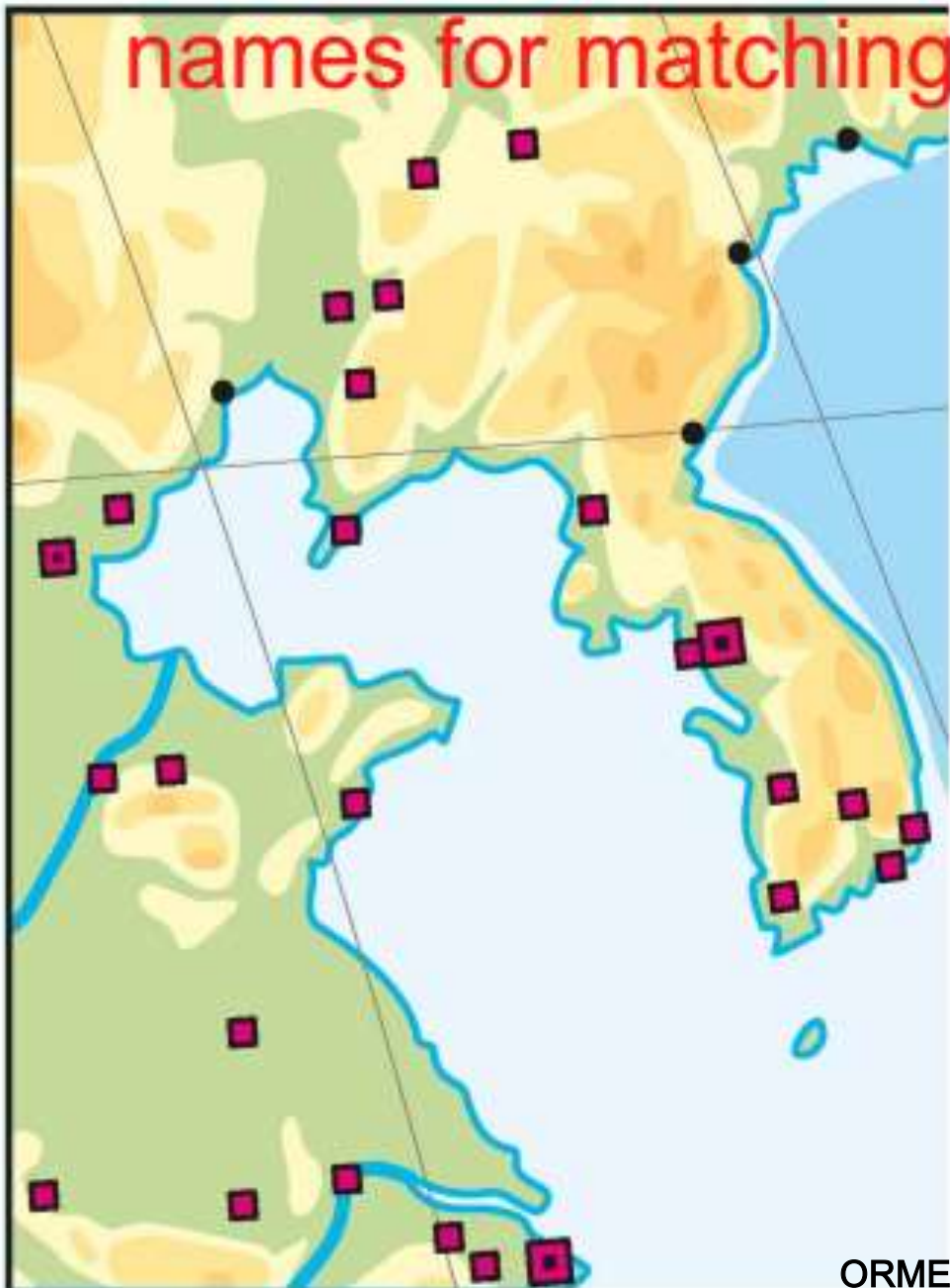


Tell history and heritage



The necessity of having geographical

names for matching geographical data



GIS operations

- Querying, buffer and overlay operations on the basis of named objects are possible on the basis of place name standardization

The screenshot shows the TM SmartMap GIS interface. The main map displays a street view of Kuala Lumpur with a context menu open over a point labeled 'Kampung Peruk (Kuala Lumpur)'. The context menu includes options like 'Query POIs...', 'Count POIs...', 'Query properties...', etc. The 'Query POIs' dialog box is open, showing a tree view of selected items. The tree view is expanded to show 'Education' with sub-items 'Preschools', 'Primary Education', 'Secondary Education', and 'Tertiary Education'. The 'Selected Items' list on the right shows the resulting query results. Below the tree view, a table displays the results:

Category	Count
Category: POI; Education; Preschools	Count=1
Category: POI; Education; Primary Education; Chinese	Count=1
Category: POI; Education; Primary Education; National	Count=1
Category: POI; Education; Primary Education; Tamil	Count=1
SJK (T) Appar	4, Jalan Merpati, Kampung Bahru, 50480 Kuala Lumpur
Category: POI; Education; Secondary Education; National, Technical	Count=1
Category: POI; Education; Tertiary Education; Colleges	Count=1
Category: POI; Education; Tertiary Education; Universities, Universities	Count=1

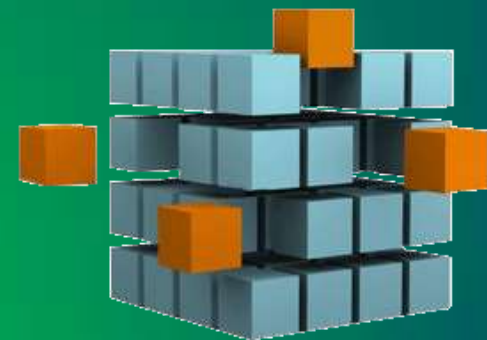
STANDARDISATION OF PUBLIC GEOGRAPHICAL NAMES IN MALAYSIA

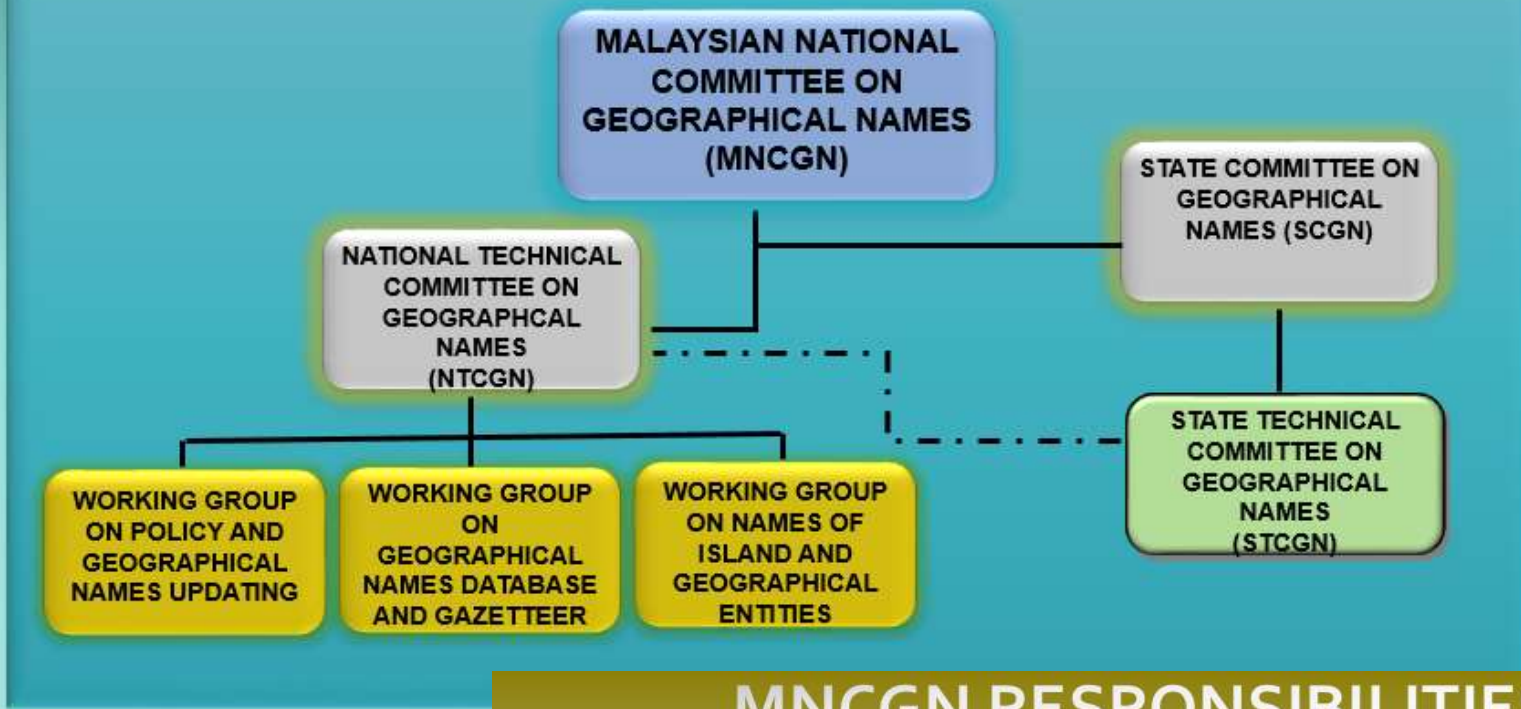
MALAYSIAN NATIONAL COMMITTEE ON GEOGRAPHICAL NAMES (MNCGN)

➤ Established on 11
September 2002 by the
Malaysian Cabinet

➤ Responsible to
coordinate geographical
naming activities in
Malaysia

➤ Chaired by the Director
General of Surveying and
Mapping Malaysia





MNCGN RESPONSIBILITIES

1
Formulating national guidelines for the determination of geographical names

2
Developing the National Geographical Names Database and Gazetteer

3
Promoting the use of official names

4
Coordinating the input of national nomenclature activities with those at the international level



JKNG National Programs

Integration of geographical names into topographic map updating process



REFLECTING NATIONAL IDENTITY

Towns:

- ▶ Jesselton → Kota Kinabalu
- ▶ Maxwell Hill → Bukit Larut
- ▶ Port Swettenham → Pelabuhan Kelang





Geographical names

United Nations Statistics Division

World



UNGEGN – UN Geographical Experts on Geographic Names



UNGEGN Asia South East Division
(12 country members)

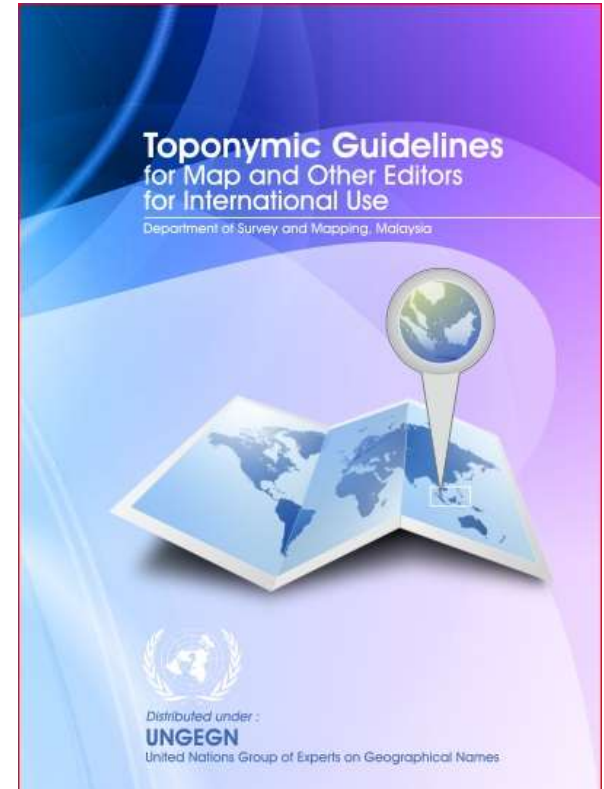
Toponymic Guidelines for Map and Other Editors for International Use

This document was developed in both English and Malay language and has content as follows:

- i. Introduction
- ii. Language
- iii. Spelling and Pronunciation
- iv. Dialect
- v. Geographical Names Authority and Standardisation of Geographical Names
- vi. Administrative Levels
- vii. Resources
- viii. Glossary of Appellatives, Adjectives and Other Words Necessary for the Understanding of Maps
- ix. Abbreviations of Geographical Terms and Other Words Used in Map
- x. Acknowledgements
- xi. Reference
- xii. Annex (Map of Peninsular Malaysia, Sabah & Sarawak)

Cont..

- The final document was sent to Mr. Gerhard Rampl (Coordinator of Toponymy UNGEGN) on 26th June 2016 to be published in the UNGEGN website.
- Previously, the document was being edited and improved according to the comments by Mr. Hubert Bergmann in 2014 (former Coordinator of Toponymy UNGEGN).
- The guideline will be presented in the upcoming '11th United Nations Conference on the Standardisation of Geographical Names' to be held from 8 - 17 August 2017 in New York, USA.



CONCLUSION



- **Consistent use of accurate geographic name of places is an important element in effective communication worldwide, apart from supporting socio-economic development, conservation and national infrastructure.**
- **Standard geographical names can also identify and reflect culture, heritage and landscape**
- **A comprehensive database containing names of official places would benefit commerce, national census, property management, environmental planning, natural disaster relief, national security and tourism**
- **By standardizing place names on government maps, it eliminates problems that arise from inconsistencies and redundancies—a boon to mapmakers and map-readers alike.**

A scenic landscape at sunset. The sky is filled with vibrant orange and yellow clouds, with the sun low on the horizon behind a range of jagged mountains. A river flows through a lush green forest in the foreground, reflecting the warm light of the setting sun. The overall mood is peaceful and majestic.

THANK YOU

