

APPLYING GIS AS AN INFRASTRUCTURE OF A SMART CITY IN HOCHIMINH CITY, VIETNAM

CONTENT

1 – OUR GOAL

2 – PROGRESS

3 – PLANNING FOR THE NEXT PERIOD –

GIS AS AN INFRASTRUCTURE SERVICES

1 – OUR GOAL



HOCHIMINH City is the largest city in Vietnam:

- **24 districts**
- **Area: 2 millions km²**
- **Population: >8 millions (including immigrants)**

The vision of HCMC



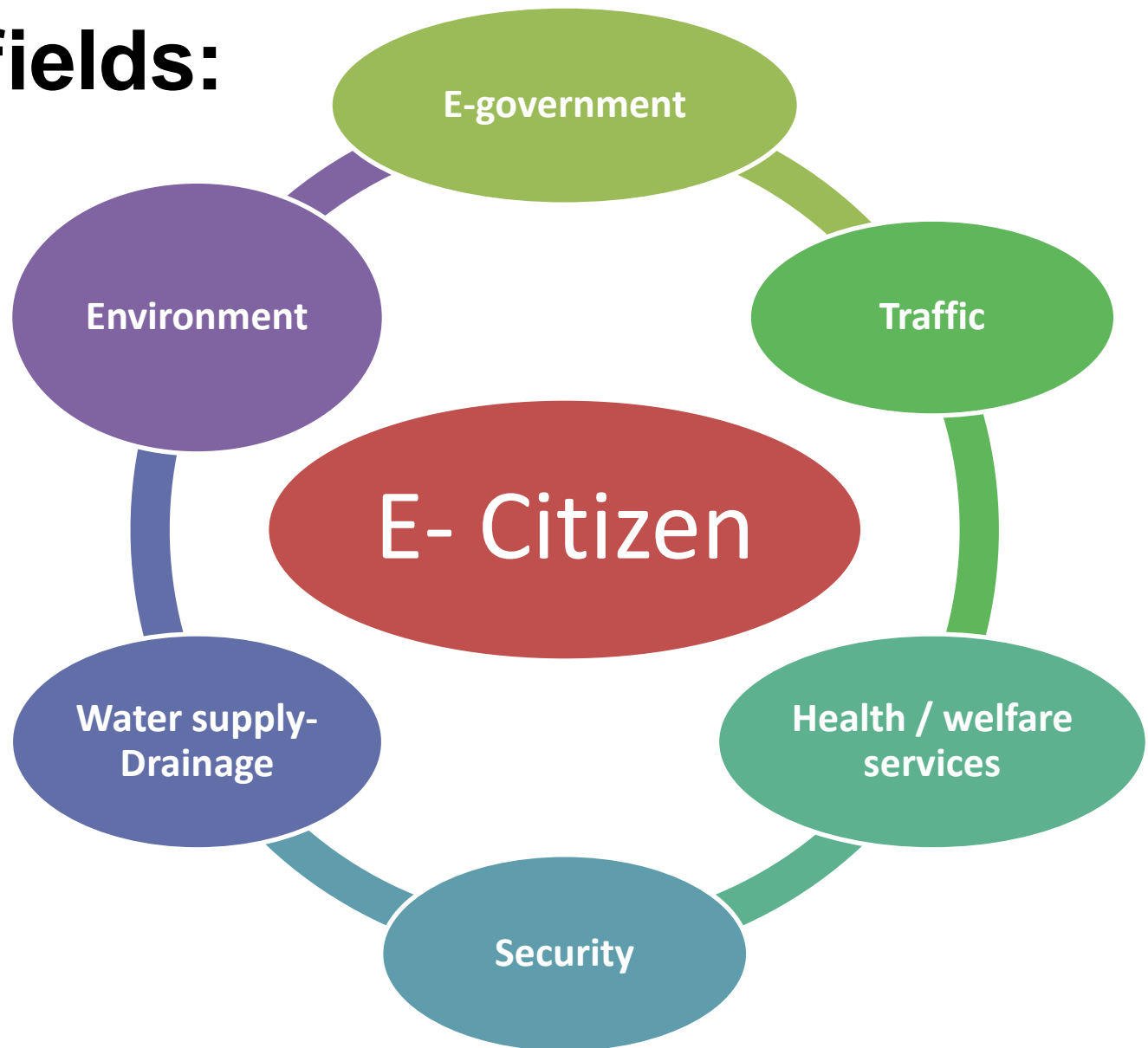
***Building a good
quality city:***

✓ ***Livability***

✓ ***Workability***

✓ ***Sustainability***

6 major fields:



II – PROGRESS

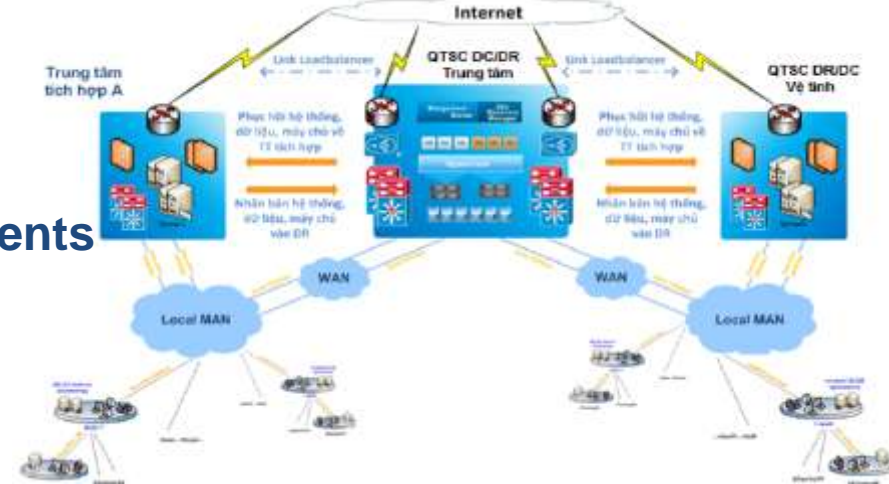
PRIVATE SECURED NETWORK

Data center



METRONET
685 CONNECT POINTS

Provide a private network for official departments and corporations of government



NETWORK OPERATIONS CENTER (NOC)

Surveillance
Coordination
24/7



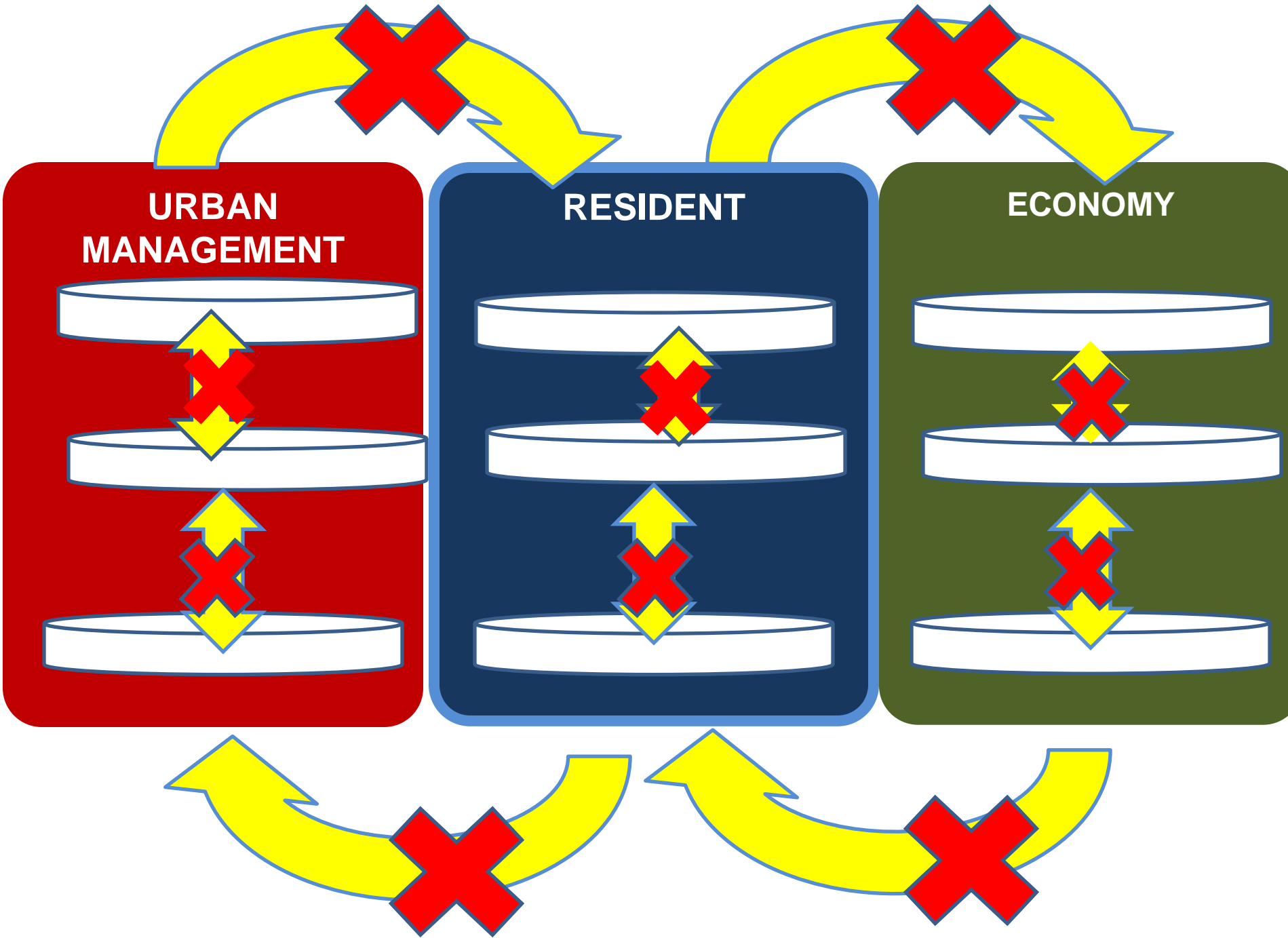
Trung tâm điều hành viễn thông thành phố (City NOC)

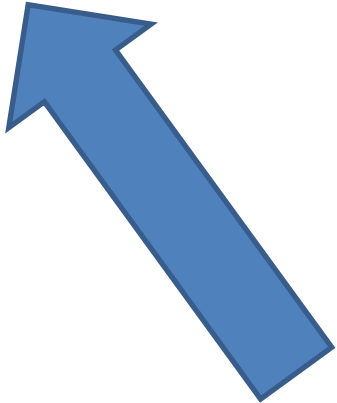
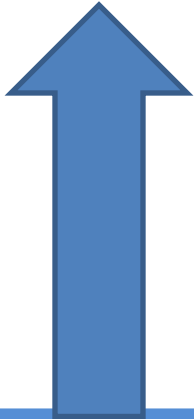
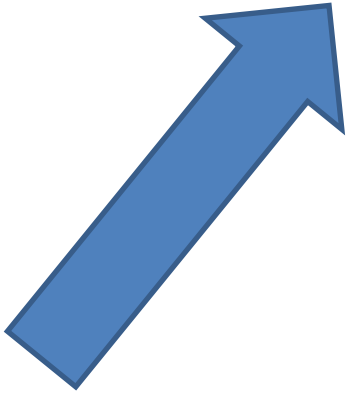
APPLYING INFORMATION TECHNOLOGY IN GOVERNMENT MANAGEMENT



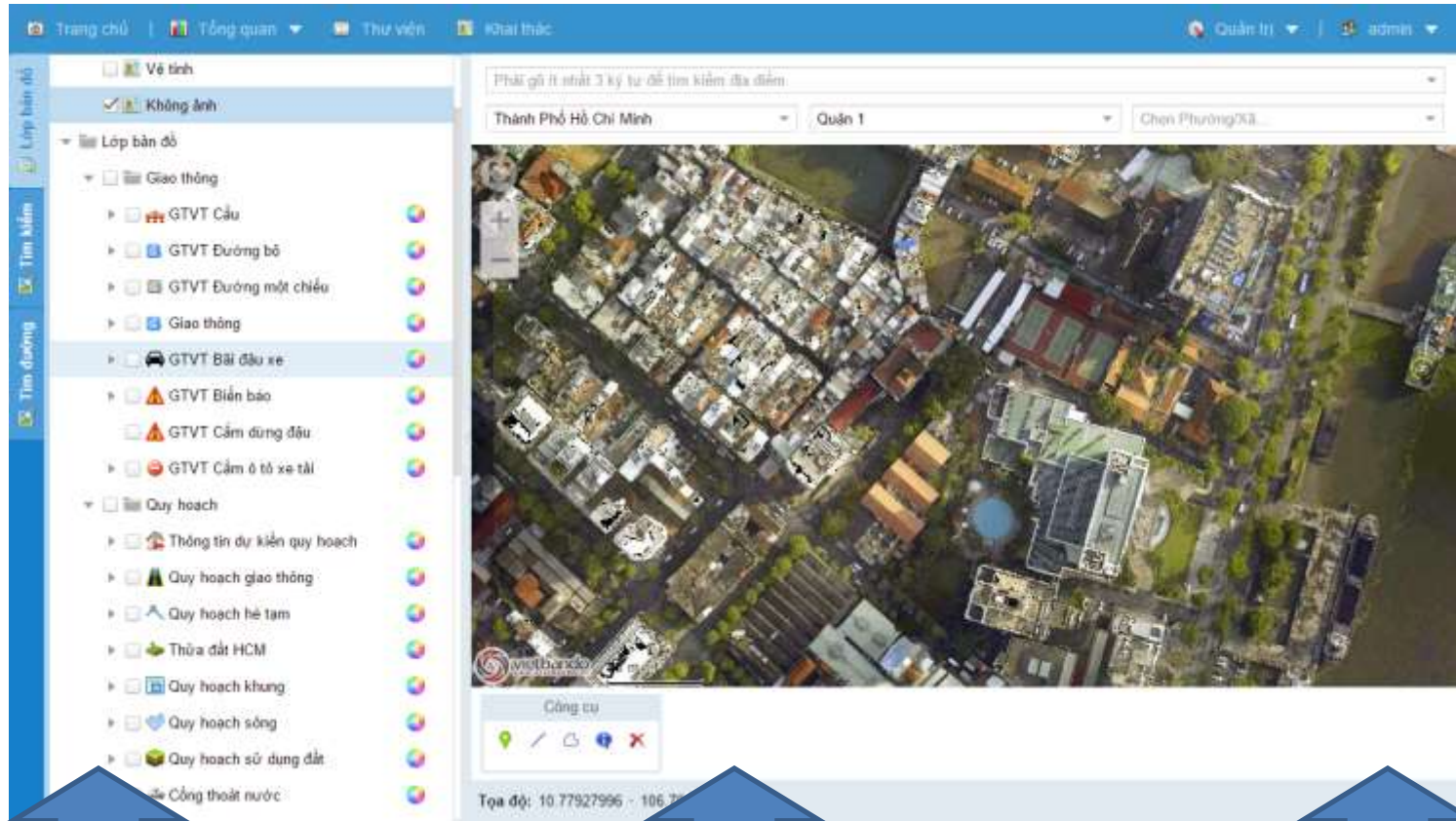
- **One-stop-shop services:**
 - 24 districts
 - 18 departments
- **Provide public services (300 services ~ 10%)**
- **Monitoring the activities of government**
 - ✓ Know the status of activities
 - ✓ Report based on time line and satisfied

PLANNING FOR THE NEXT PERIOD – GIS AS AN INFRASTRUCTURE SERVICE





APPLYING GIS AS AN INFRASTRUCTURE SERVICE TO INTERGRATE DATABASES FROM DEPARTMENTS OF HCMC



**DATABASE OF
URBAN
MANAGEMENT**

**DATABASE OF
SOCIETY**

**DATABASE OF
ECONOMY**

ENHANCED SERVICES

CREATE

Companies, agencies can act on data to improve service

OPERATION SYSTEM
BASE ON GEOMEDIA

DATA SHARING AND INTEGRATED - data.hochiminhcity.gov.vn

Geospatial
one stop
shop

Geocoding

APIs...

COLLECT DATA

Geocoder

MAP
CATALOG



CONNECT

Wider availability of connectivity

DATABASE OF
URBAN
MANAGEMENT

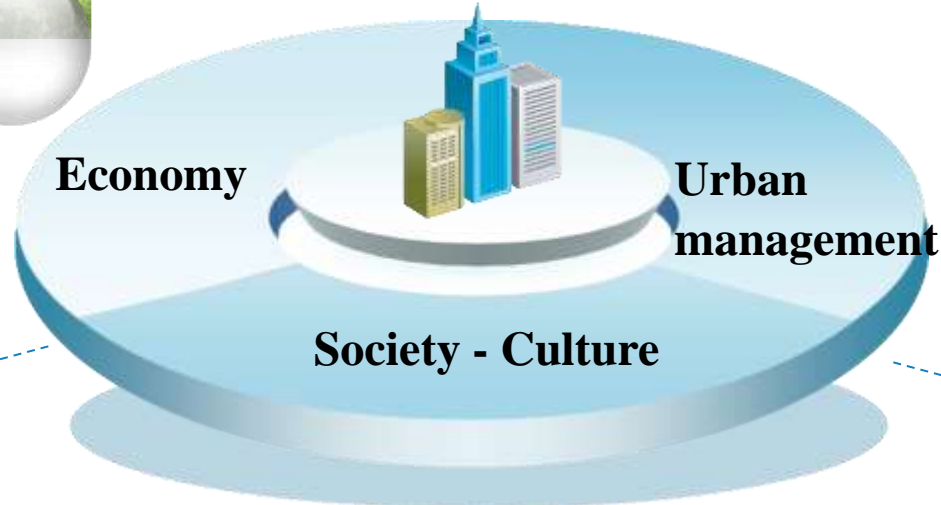
DATABASE OF
SOCIETY AND
CULTURE

DATABASE OF
ECONOMY,
SERVICES AND
TECHNOLOGY



TARGET: A SMART CITY

HCMC's E-GOVERNMENT 2016-2020



Transportation
Healthcare – Environment
Security
Water supply



E-Officer



E-Business



E- Citizen

CONCLUSION

A SMART CITY

GIS AS AN INFRASTRUCTURE SERVICE

1. **INTEGRATE** database from departments
2. **INCREASE** ability to provide **ONE-STOP-SHOP** services
3. Insert **POSITION** as an important attribute when building data
4. Apply advantages of GIS to mining and planning in high level

**THANK YOU
FOR YOUR ATTENTIONS**