

MyCOMMS: Public Access to Communications and Multimedia Infrastructure and Services in Malaysia

Date : 18 October 2016

Venue : Berjaya Time Square Hotel, Kuala Lumpur
Malaysia



Agencies Under The Ministry Of Communications & Multimedia Malaysia



JABATAN PENYIARAN MALAYSIA



JABATAN PENERANGAN MALAYSIA



JABATAN HAL EHWAL KHAS



INSTITUT PENYIARAN DAN PENERANGAN TUN ABDUL RAZAK



JABATAN PERLINDUNGAN DATA PERIBADI



PERBADANAN EKONOMI DIGITAL MALAYSIA (MDEC)



MYNIC



SURUHANJAYA KOMUNIKASI DAN MULTIMEDIA MALAYSIA



PERTUBUHAN BERITA NASIONAL MALAYSIA

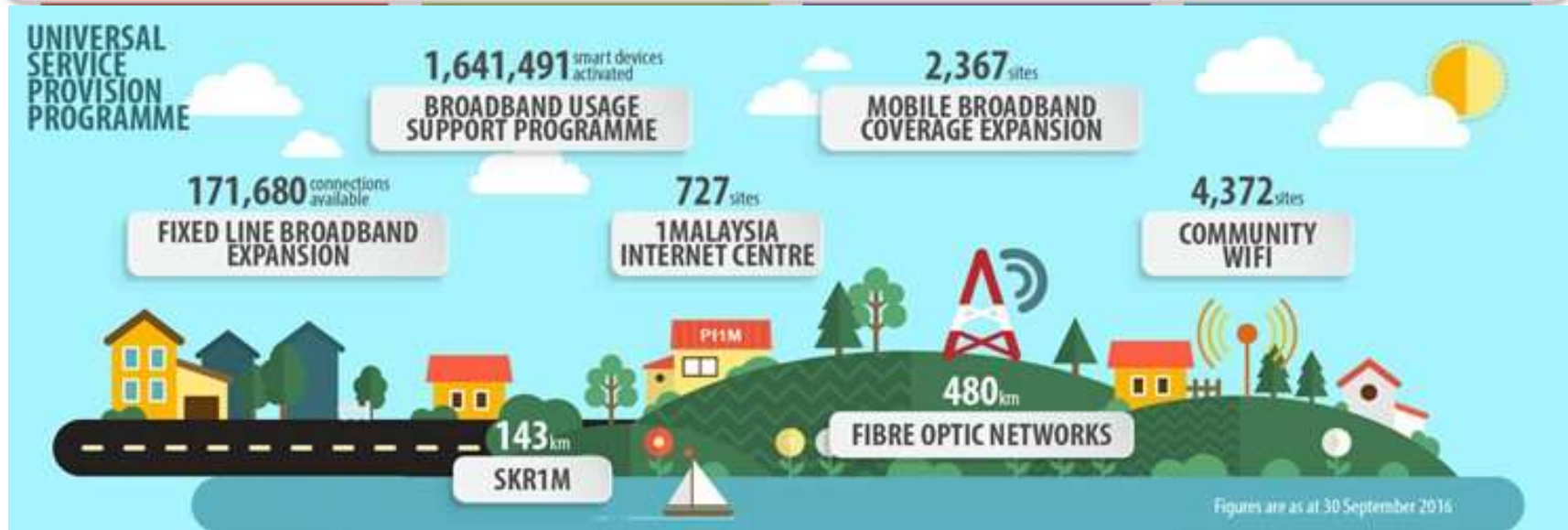


PERBADANAN KEMAJUAN FILEM NASIONAL MALAYSIA

SKMM Sectoral Regulation



Government Initiatives Through MCMC



Population Coverage

2G Coverage (Malaysia)



Coverage by 17-10-2016 :
93.58 %

3G Coverage (Malaysia)



Coverage by 17-10-2016 :
91.15 %

WIMAX Coverage
(Malaysia)



Coverage by 17-10-2016 :
83.97 %

LTE Coverage (Malaysia)



Coverage by 17-10-2016 :
63.06 %

Communication Infrastructure



Camouflage



Rooftop



Concrete



Monopole



Steel Tower



Satellite Farm



Cable Landing Station



MYCOMMS

<http://mycomms.skmm.gov.my>



*Growing
Beyond Borders*



MyCOMMS by Malaysian Communications and Multimedia Commission is an information mapping service developed to accurately plan, analyse and coordinate the various implementations as well as the overall communications and multimedia infrastructure and services in Malaysia.

The Mycomms Database comprises several dataset of network elements which captures coverage, location, routes, capacity and other related information of communications infrastructure such as fiber optic, microwave stations, earth station, switch stations, free standing towers, roof-top structures, Post Office and Courier Outlet information.

WE PINPOINT





Login Page



Visions
 A globally competitive, efficient and increasingly self-regulating communications and multimedia industry generating growth to meet the economic and social needs of Malaysia.
 Promoting access to communications and multimedia services;
 Ensuring consumers enjoy choice and a satisfactory level of services at affordable prices;
 Providing transparent regulatory processes to facilitate fair competition and efficiency in the industry;

Public User Login

Email:

Password:

Forgot Password?

- Or sign in using -



Features

PCI
 Easily to find point of Interest (POI)

Coverage
 Find information on wireless

Feedback
 You have comment on network?

Mobile App
 Available in IOS and Android

What is MyCOMMS?
 MyCOMMS is an information mapping service developed to accurately plan, analyze and coordinate the various implementations as well as the overall communications and multimedia infrastructure and services in Malaysia.



MyCOMMS Database
 The MyCOMMS database comprises several dataset of network elements which captures coverage, location, routes, capacity and other related information of communication infrastructure and services.

Legal Disclaimer | Privacy Policy | Security Policy | Terms of Use | Sitemap
 Copyright © 2016-2016 Malaysian Communications and Multimedia Commission All Rights Reserved.
 Email: webmaster@ccdd@mc.gov.my
 Last updated on 7 August 2016. Visitor counter: 4917.
 Best viewed using IE version 8.0 and above with 1024 x 768 resolution.

Main Menu



- Profile
- Admin
- Report
- Home
- Feedback
- Logout

 Pusat Internet 1M	 Community Broadband Library	 Kampung Tanpa Wayar	 Post
 Wi-Fi	 Wireless Service Coverage	 Tela-Centre	 Courier Outlet
 RF Tower	 RF	 EMF	 EMF

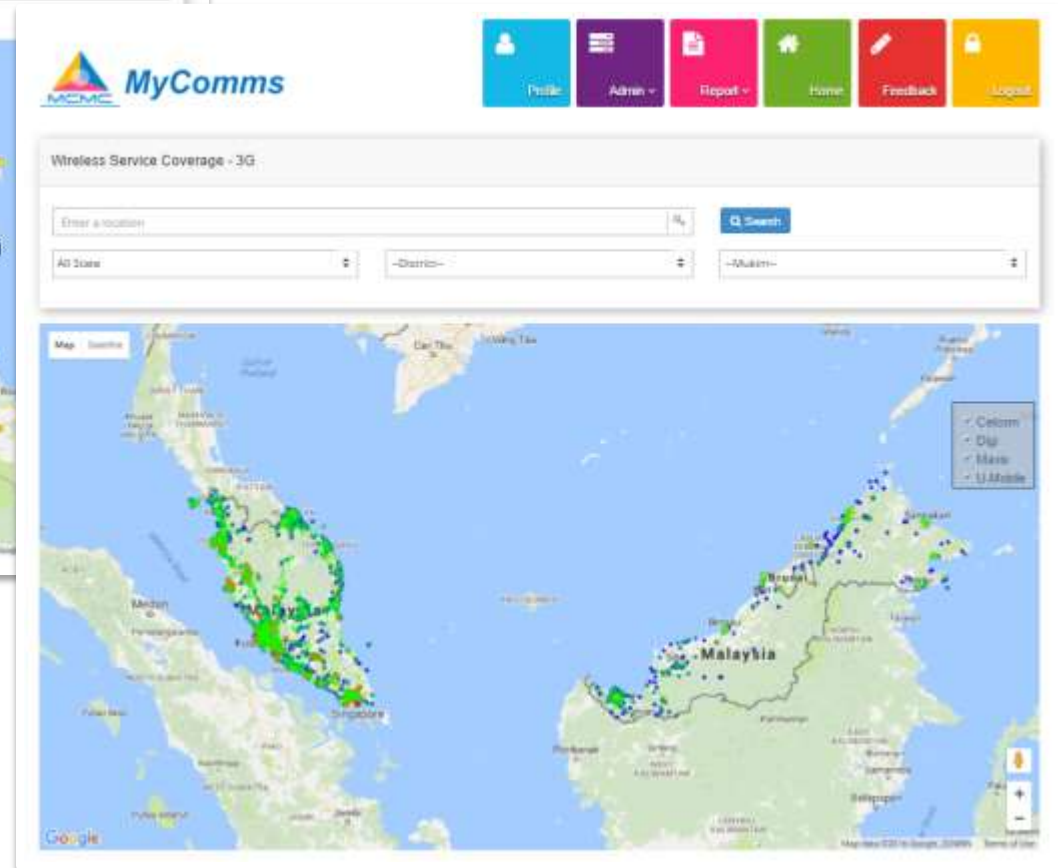
Legal Disclaimer | Privacy Policy | Security Policy | Terms of Use | Sitemap
 Copyright © 2016-2016 Malaysian Communications and Multimedia Commission All Rights Reserved.
 Email: webmaster@ccdd@mc.gov.my
 Last updated on 7 August 2016. Visitor counter: 4917.
 Best viewed using IE version 8.0 and above with 1024 x 768 resolution.

Point of Interest (POI)



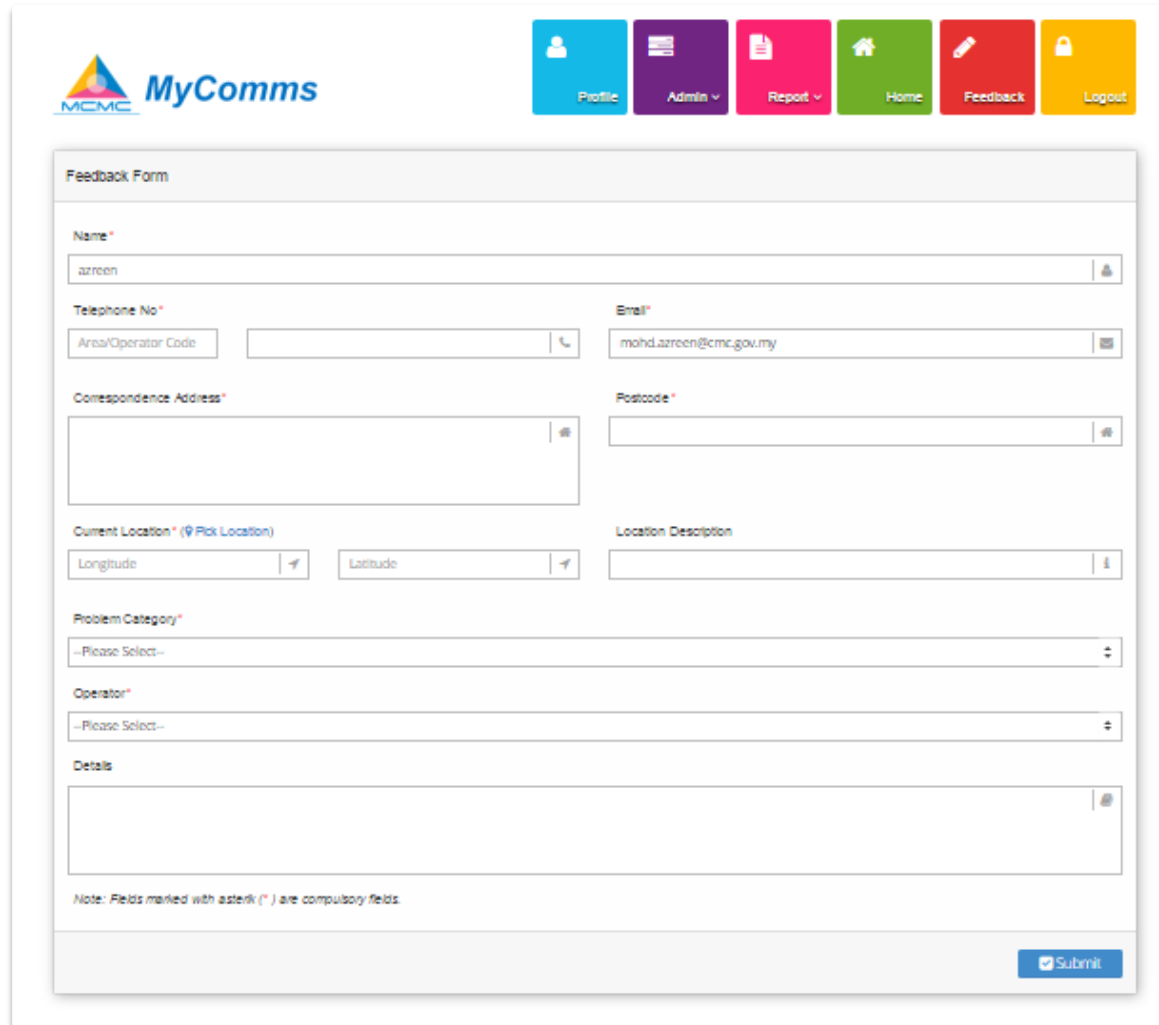
The interface for the Point of Interest (POI) tool. It features the MyComms logo at the top left and a navigation bar with buttons for Profile, Admin, Report, Home, Feedback, and Logout. Below the navigation bar is a search section titled "Pusat Internet 1M" with a text input field for "Enter a location", a search button, and three dropdown menus for "All Scales", "District", and "Multi".

Coverage Map



The interface for the Coverage Map tool. It features the MyComms logo at the top left and a navigation bar with buttons for Profile, Admin, Report, Home, Feedback, and Logout. Below the navigation bar is a search section titled "Wireless Service Coverage - 3G" with a text input field for "Enter a location", a search button, and three dropdown menus for "All Scales", "District", and "Multi". The main area contains a map of Malaysia with green and blue markers indicating service coverage. A legend in the top right corner of the map area lists "Celcom", "Digi", "Maxis", and "U Mobile".

**Public Feedback for
Dropped Call, No Service
Coverage & Poor Service
Coverage**



The screenshot shows the 'MyComms' website interface. At the top left is the MCMC logo and 'MyComms' text. To the right is a navigation menu with buttons for Profile, Admin, Report, Home, Feedback, and Logout. The main content area is titled 'Feedback Form' and contains the following fields:

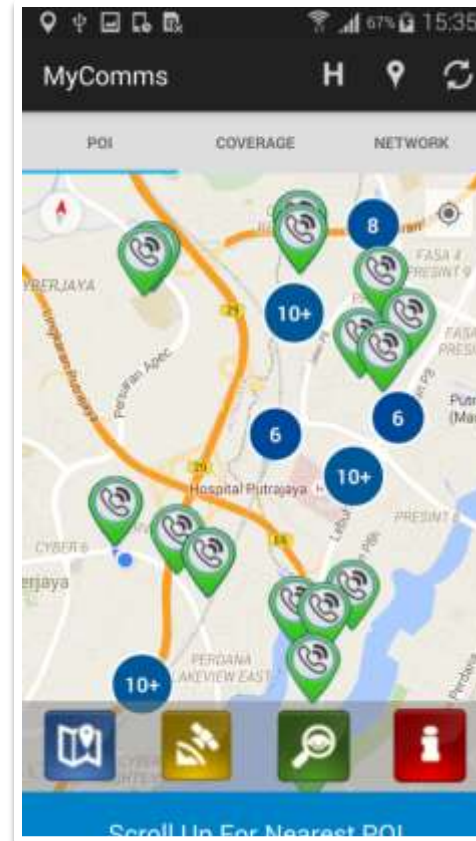
- Name ***: Text input field containing 'azreen'.
- Telephone No ***: Two input fields, the first containing 'Area/Operator Code' and the second empty.
- Email ***: Text input field containing 'mohd.azreen@cmc.gov.my'.
- Correspondence Address ***: Large text area, currently empty.
- Postcode ***: Text input field, currently empty.
- Current Location * (Pick Location)**: Two dropdown menus for 'Longitude' and 'Latitude', both currently empty.
- Location Description**: Text input field, currently empty.
- Problem Category ***: Dropdown menu with '--Please Select--'.
- Operator ***: Dropdown menu with '--Please Select--'.
- Details**: Large text area, currently empty.

A note at the bottom states: 'Note: Fields marked with asterisk (*) are compulsory fields.' A 'Submit' button is located at the bottom right of the form.



MyCOMMS Mobile Apps

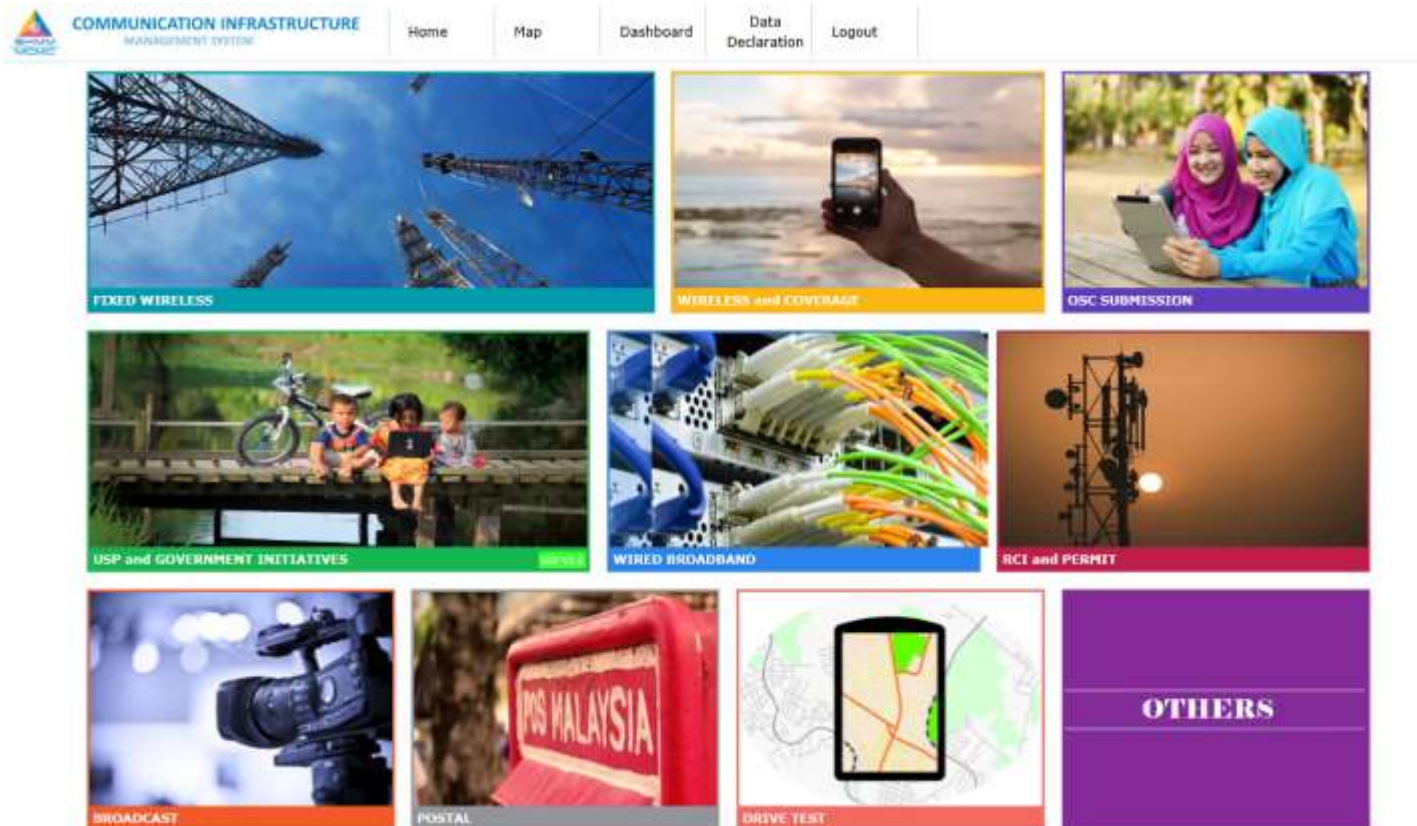
Mobile application interface for public and MCMC internal users to access communication data including infrastructure communication information, coverage plotting (2G/3G/Wimax/LTE) and post & courier services utilising iOS & Android platform.



Communication Infrastructure Management System (CIMS)

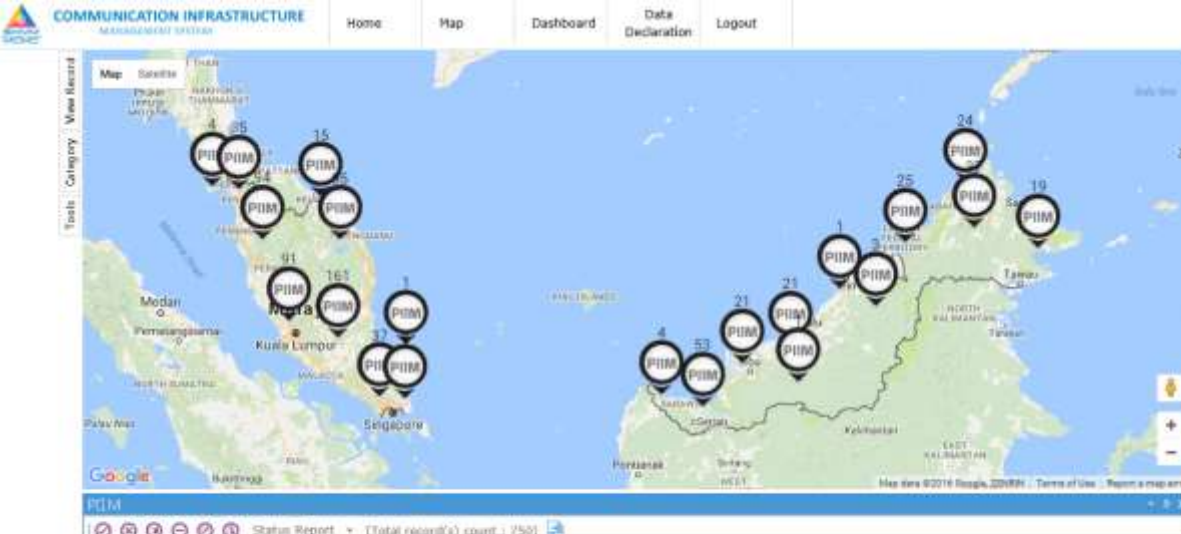
An information-mapping applications developed to plan and coordinate the various implementations under the National Broadband Initiative (NBI) as well as the overall communications and multimedia infrastructure and services in Malaysia :

- a) Integrated first point of reference for various communication infrastructure
- b) Simplified tool in identifying communications infrastructure around Malaysia





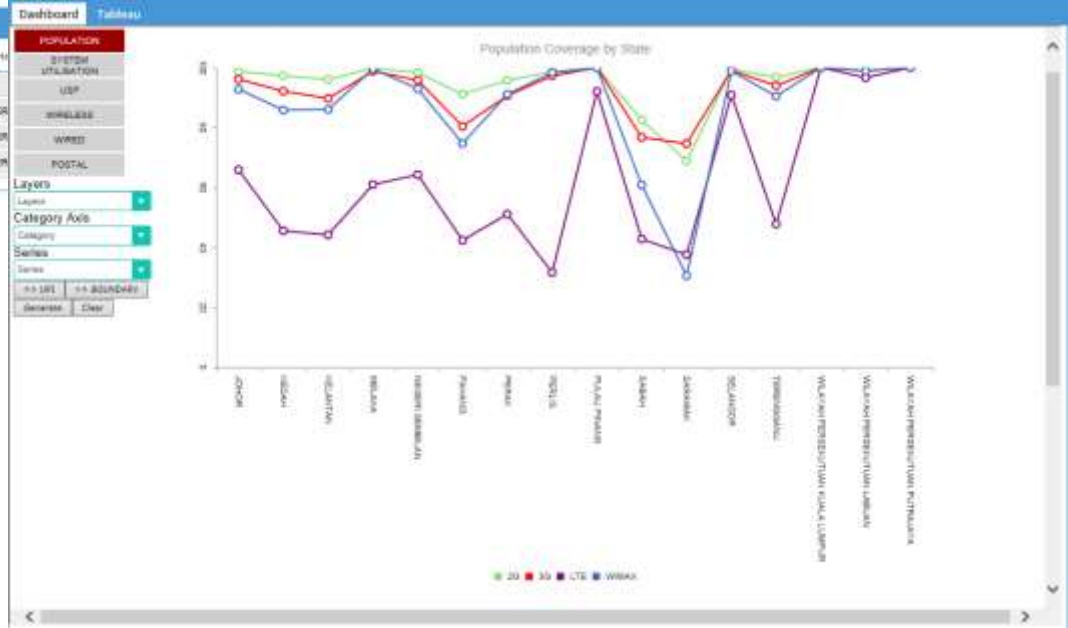
Map Display



Project Dashboard

Drag a column header and drop it here to group by that column.

	Status	Systems ID	RefId	Name	(DA0016) State	(DA0076) Thred
<input type="checkbox"/>	TEMP	1365	K000018	Relian Kubur Rajang	02 - KEDAH	02 - BIK
<input type="checkbox"/>	TEMP	1672	K000043	Felda Lubok Merbau	02 - KEDAH	02 - PADANG TER
<input type="checkbox"/>	TEMP	2768	K000001	Rampung Tong Pali	02 - KEDAH	02 - PADANG TER
<input type="checkbox"/>	TEMP	2921	K000002	Rampung Bekuh Luar	02 - KEDAH	02 - PADANG TER





CIMS – Google Street View

View Record
Category
Tools



PIM

Status Report [Total record(s) count : 750]

Drag a column header and drop it here to group by that column

		Status	System ID	Refid	Name	(DA0030) State	(DA0070) District	(DA0090) Mukim	Address1
<input type="checkbox"/>		TEMP	1365	K05C010	Pekan Kubur Panjang	02 - KEDAH	07 - SIK	03 - SOK	Pusat Internet 1Malaysia Pekar
<input type="checkbox"/>		TEMP	1672	K03C013	Felda Lubok Merbau	02 - KEDAH	03 - PADANG TERAP	72 - PEKAN LUBOK MERBAU	Pusat Internet 1Malaysia Felda
<input type="checkbox"/>		TEMP	2788	K09C001	Kampung Tong Pelu	02 - KEDAH	03 - PADANG TERAP	09 - PEDU	Pusat Internet 1Malaysia Kamp
<input type="checkbox"/>		TEMP	2521	K06C002	Kampung Belukar Luas	02 - KEDAH	03 - PADANG TERAP	10 - TEKAI	Pusat Internet 1Malaysia Kamp

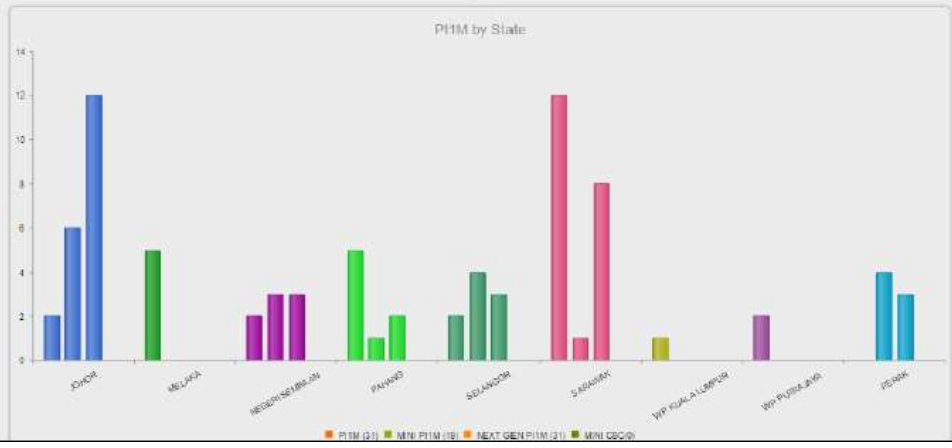
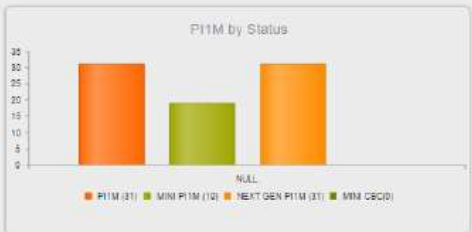
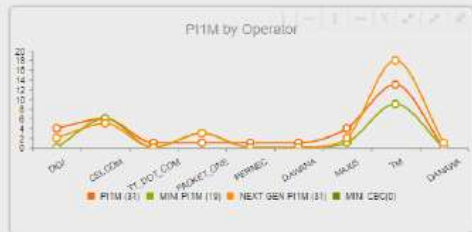
CIMS – Universal Service Provision (USP)

An information-mapping applications developed using JAVA programming language to plan and coordinate various implementations of communications and multimedia infrastructure under the Universal Service Provision (USP).





Map Display



Project Dashboard

Stakeholders

Kampung Tanpa Wayar
Spectrum
Numbering
Coverage
Quality of Standards



Government use
Telecenter
Local Authority

Exchange
Fiber Link
Hill Stations
Cable Landing



Post office locations
Coverage area

Some features - Modules

Field and Web

- Data Entry
- Data verification

Planning

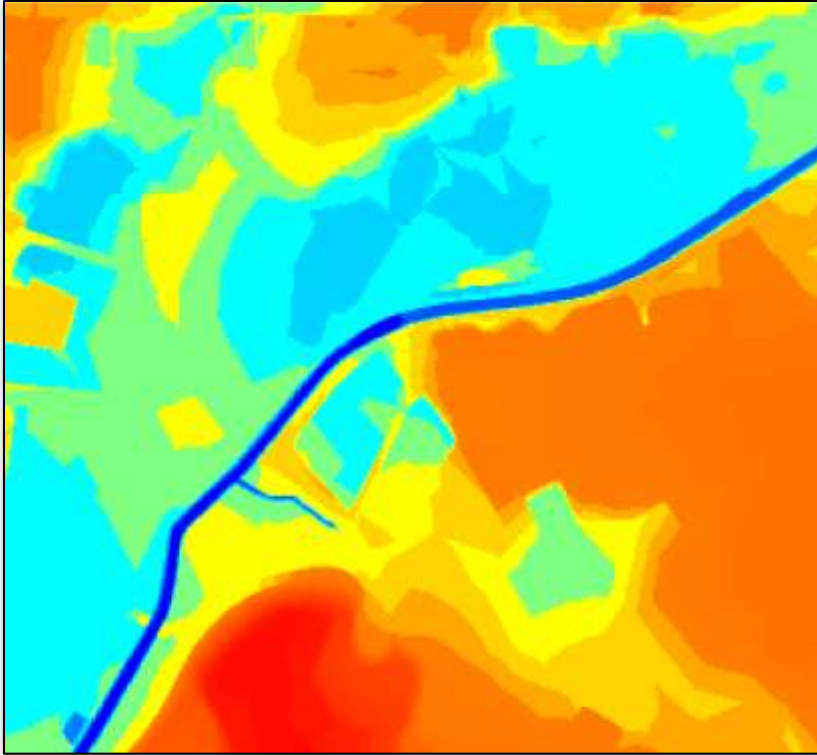
- Local Authority approval process

Quality of Standards

- Monitoring
- Enforcement

Digital Terrain Model (DTM & DSM)

Basemap in .grd & .grc format with 5m resolution for main city and 30m resolution for other area.



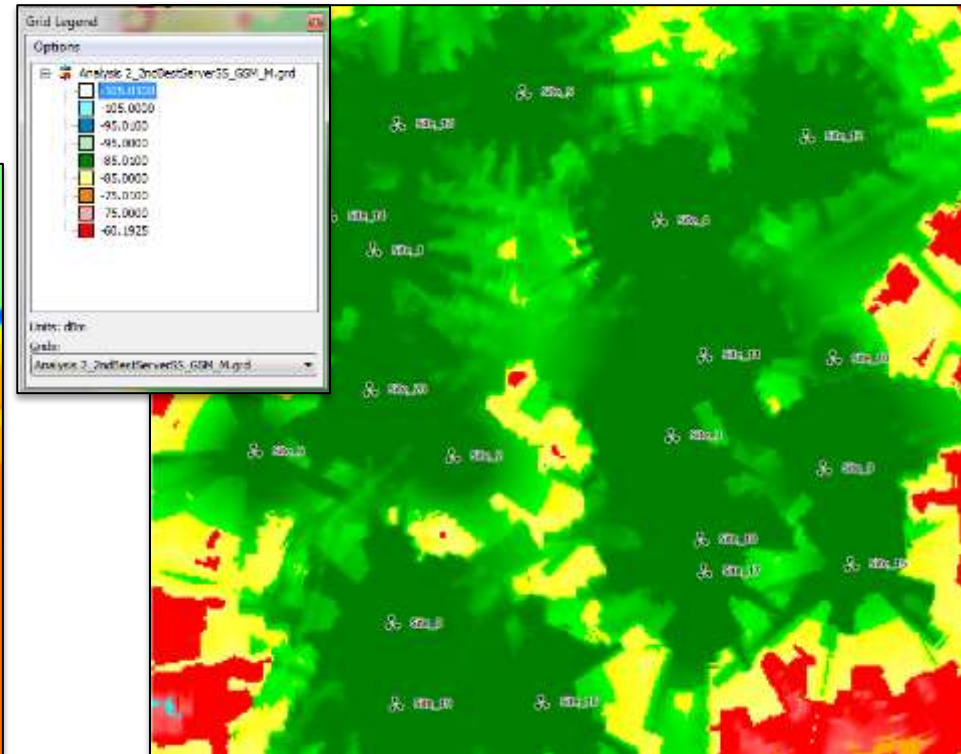
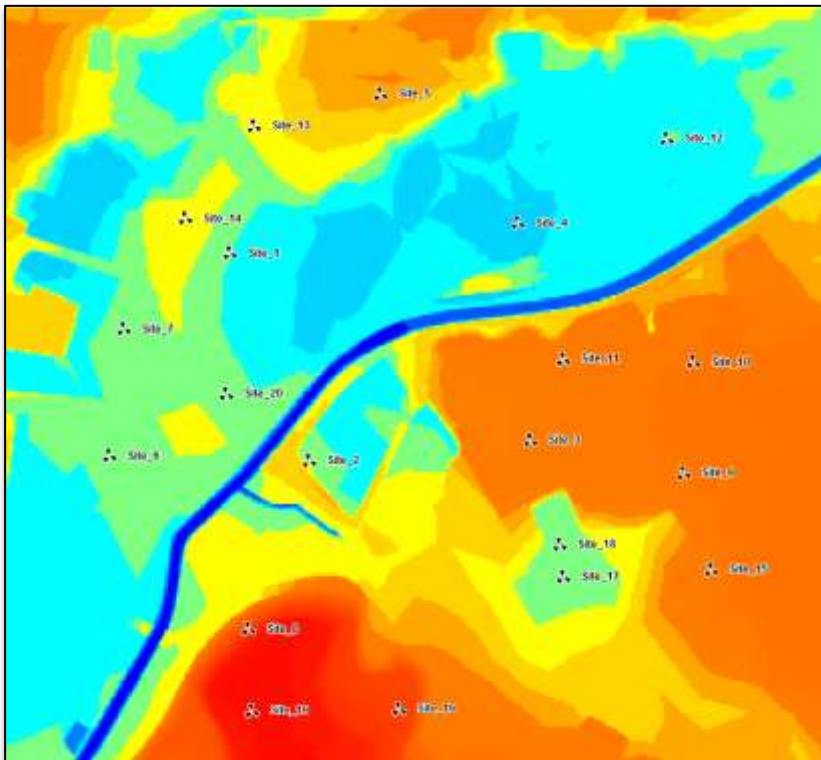
Clutter (Land Cover)

Land used of clutter basemap in .grc format with 5m resolution for main city and 30m resolution for other area.



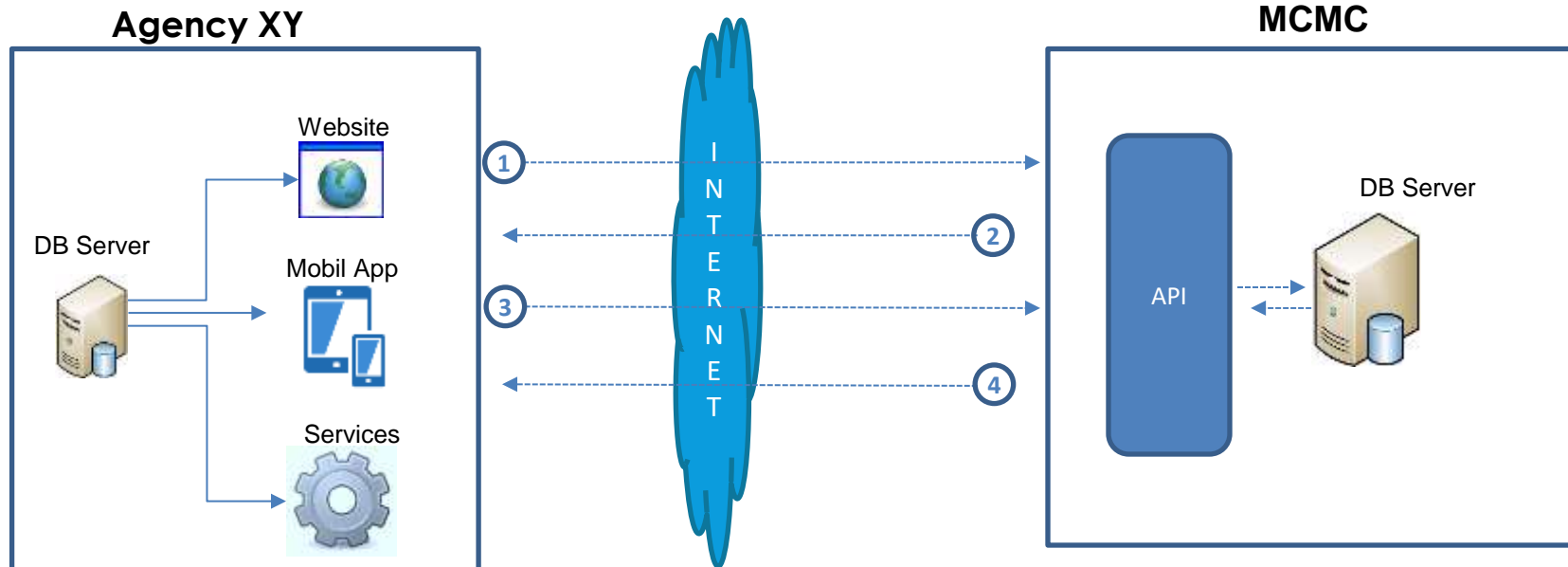
Coverage Planning Tool

Transmission station data overlay with DTM and DSM data



Final output shows coverage quality mapping for specific area generated using 'Mentum Planet' planning tools software.

API For Data Sharing



- Agency will do the verification of identity and password given by MCMC
- CIMS server will return the security TOKEN if the verification is successfully.
- Agency will request (select, update, insert or delete) with security token
- CIMS server will return the result to Agency

Sample of API

API For Validation

Normal URL: `cims.skmm.gov.my/HttpAuthentication/login?user[UserName]=yourUserNameHere&user[Password]=yourPasswordHere`

API For Request Information Or Data

Normal URL: `cims.skmm.gov.my/data/select/mcmccims/usp_im.t_pi1m_network_stat:utilization,throughput,uptime,pi1m_site_id,date_time?pi1m_site_id='SAMPLE'&&&date_time>=to_date('01-01-2016 14','dd-mm-yyyy hh24')&&&$token='yourTokenHere'`

API To Sending Data



```

{
  "total-record": 744,
  "last-modified": "2016-08-02T10:22:08",
  "table": "USP_IM_V_CBC",
  "usp_im_v_cbc": [
    {
      "ID": 2456,
      "REFID": "CELCOH-103",
      "NAME": "Ten Huibbah",
      "STATE_CODE": "08",
      "DISTRICT_CODE": "09",
      "THAKIH_CODE": "03",
      "ADDRESS1": "PEIH Tawan Huibbah",
      "ADDRESS2": null,
      "ADDRESS3": "Teluk Intan",
      "POSTCODE": "36000",
      "CITY": "Teluk Intan",
      "CATEGORY": "CBC",
      "OPERATOR": "CELCOH",
      "MO": "MRO",
      "PARLIAMENT_AREA": null,
      "UST": "Teluk Intan",
      "PHASE": "CLAMRACK 2014",
      "GROUP_BATCH": "CB2014",
      "usp_im_v_cbc": "usp_im_v_cbc"
    }
  ]
}

```

Thank You

Contact Us:

Suruhanjaya Komunikasi dan Multimedia Malaysia,
Cyberjaya, 63000 Selangor Darul Ehsan, Malaysia

Telephone: +60 3 8688 8000
Facsimile: +60 3 8688 1005
Website : <http://www.cmc.gov.my>