

GE
SMART
ASIA 2018



Locate
#Locate18



WHEN

9 – 11 APRIL 2018

WHERE

ADELAIDE, AUSTRALIA

[CLICK HERE TO KNOW MORE](#)

Advancing Geospatial Engineering in KVMRT SSP Line Project



■ Project Brief

■ Project Challenges

■ BIM Programme

■ Collaboration

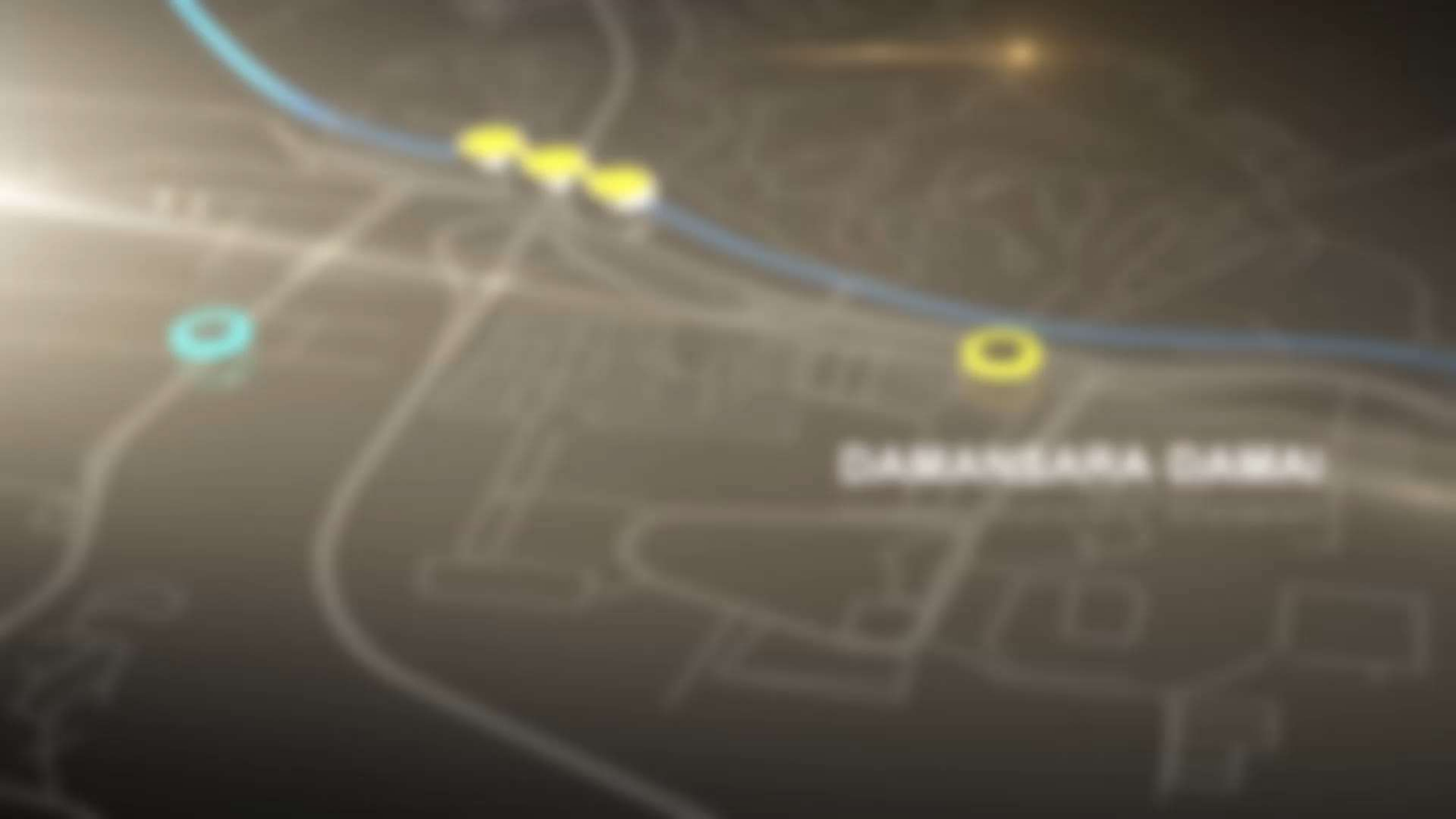
■ Integrated Design

■ Reality Modelling

■ Web Mapping



NEGARAKU



DABANBARA DABAN

Project Brief – Alignment and Stations

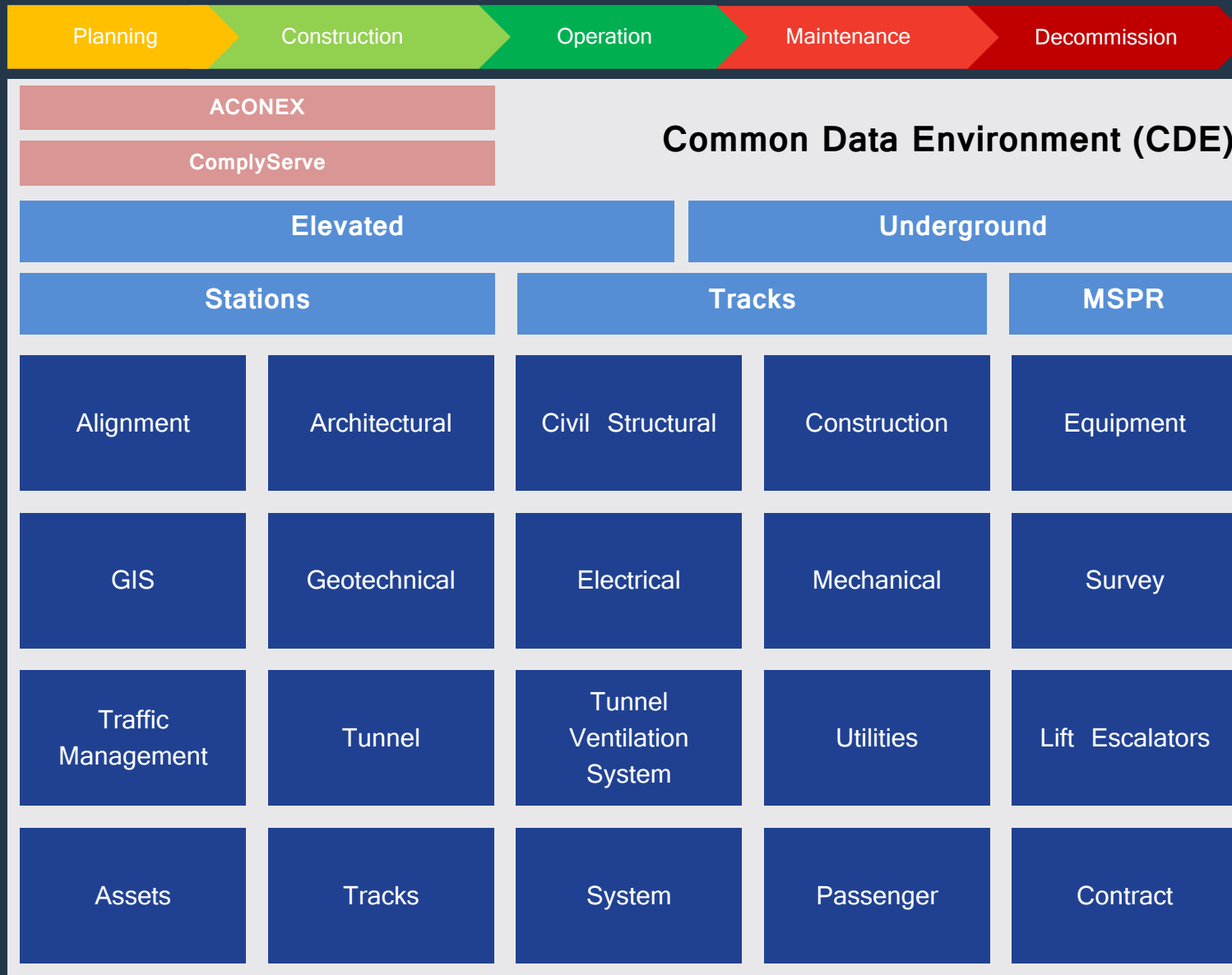
Line 2 SSP LINE	Length 52.2 km	Elevated 38.7 km	UG 13.5 km	Stations 37	Stations 26 Elevated	Stations 11 UG	Ops Ph1 Q2 2021
------------------------------	-----------------------------	-------------------------------	-------------------------	-----------------------	-----------------------------------	-----------------------------	------------------------------



<http://www.mymrt.com.my/hawk-eye-view/>



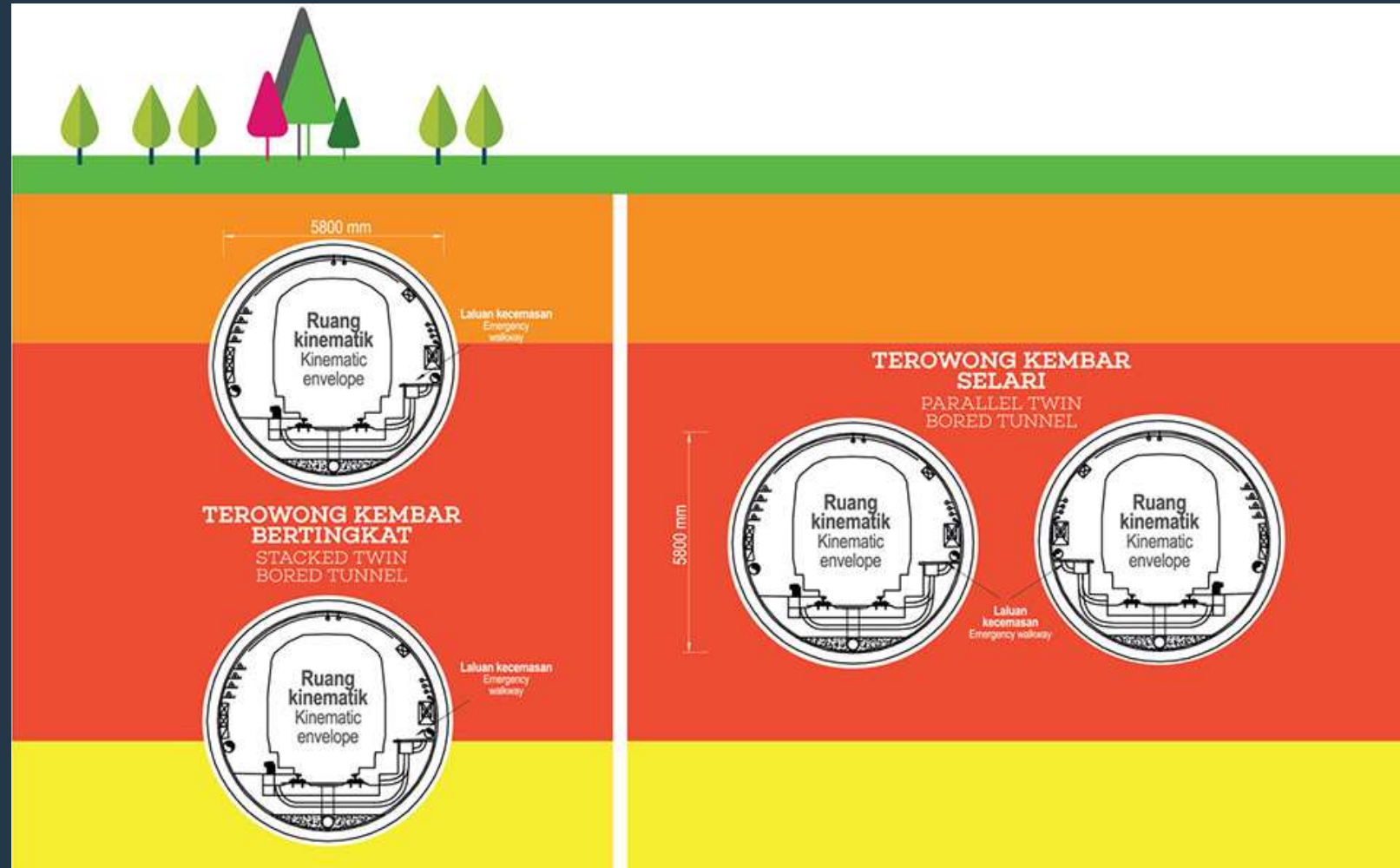
Project Challenges – Planning/Design



Project Brief – Technical Design

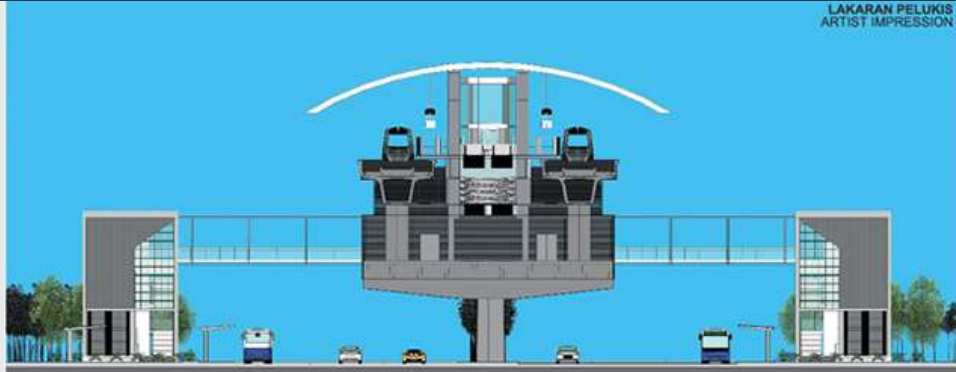


Elevated Guideway Design

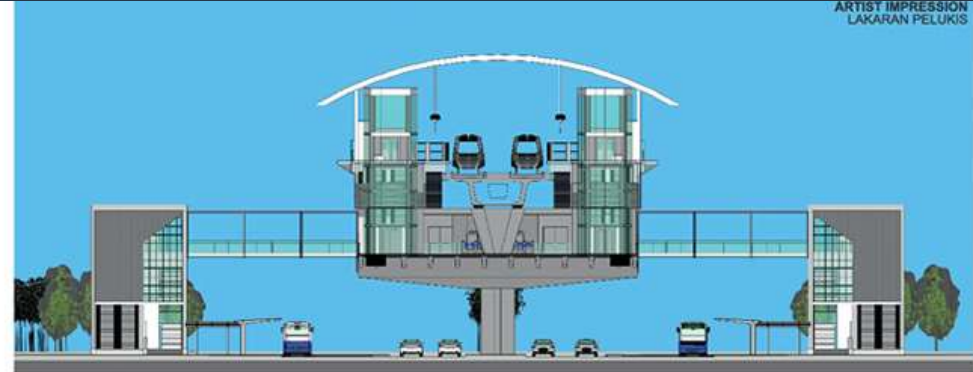


Tunnel Design

Elevated

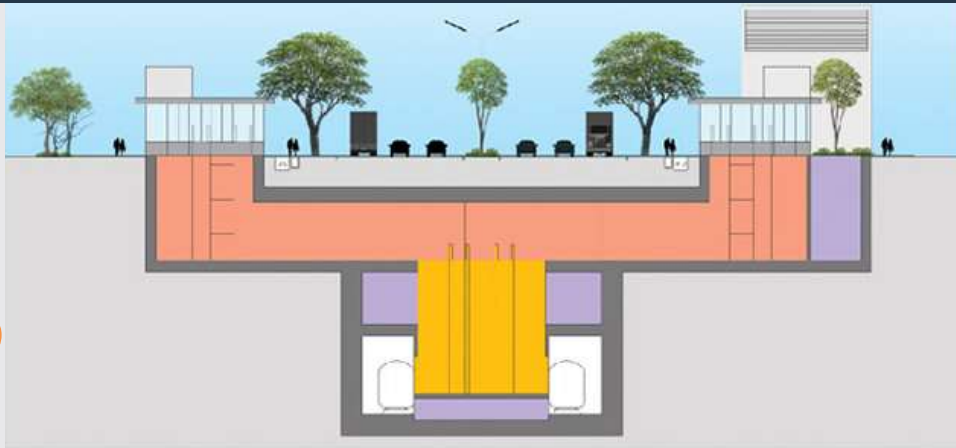


STESEN DENGAN PLATFORM TENGAH
ISLAND PLATFORM STATION

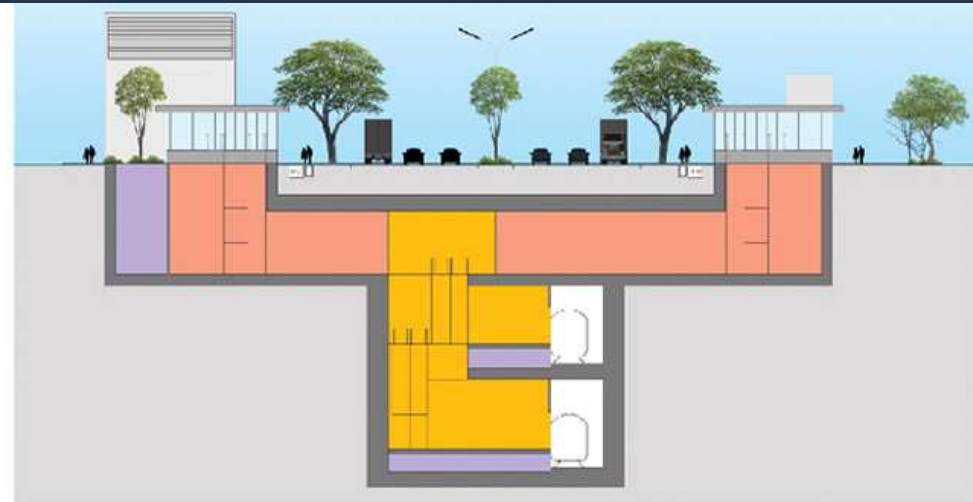


STESEN DENGAN PLATFORM SISI
SIDE PLATFORM STATION

Underground



STESEN DENGAN PLATFORM TENGAH
ISLAND PLATFORM STATION



STESEN DENGAN PLATFORM BERTINGKAT
STACKED PLATFORM STATION

Project Brief – Technical Complexity

Structural Gauge

Kinetic Envelope

Depot Equip. & Maint. Vehicles

Radio Leaky Cable

Signaling Leaky Cable

Tunnel Ventilation System

Over Track Exhaust

Signaling & Train Control System

Electric Train

Stray Current Corrosion Monitoring

Power Supply & Distribution System

HV Cabling

LV Cable

Tunnel Lighting

Station Lighting

Fire Phone

Fire Protection System

Smoke Detector

Linear Heat Detector

Handrail

Axle Counter

Third Rail

Track Works

Automatic Fare Collection System

Reflected Ceiling

Facility SCADA

Building Management System

Electronic Access Control System

Earth Map

Government Integrated Radio Networks

Touch Voltage Membrane

Illuminated Tunnel Evacuation Signage System

Technical Earth Conductor Cable

Environmental Control System

CCTV

PA System

Clock

Telephone

Telecommunication System

Help Point

Passenger Information Display System

Platform Screen Door

Platform Header

Platform End Door

Head Wall Unit

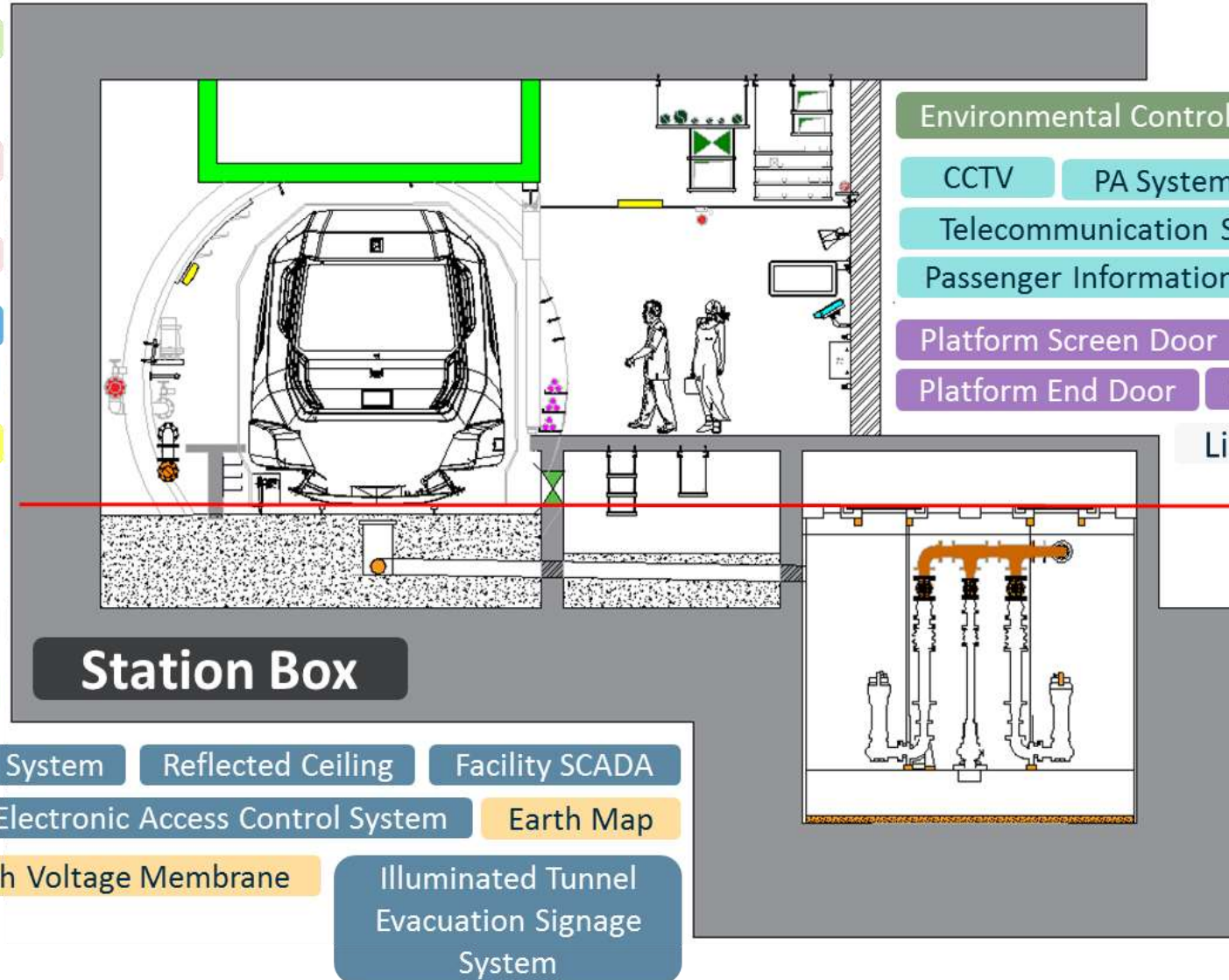
Lift & Escalator

Top of Rail Level

Drainage

Sump Pump

Sump Pit



Station Box

BIM Programme



BIM Objective

“An effective control of the project information to be shared, used without loss, contradiction or misinterpretation for the whole project life cycle”

BIM Mission

“To adopt an integrated approach to achieve Level 2 on BIM maturity for SSP Line 2 design, procurement, delivery, construction, operational & maintenance and asset management”

2015

Plan

- BIM White Paper for SSP
- Employer Information Requirement (EIR)
- Function Requirement for Common Data Environment

2016

Execute

- Award of Common Data Environment (CDE) to Bentley
- CDE Go Live
- Forming of BIM Working Group & Steering Committee
- Published Project Glossary & Naming Convention

2017

Develop

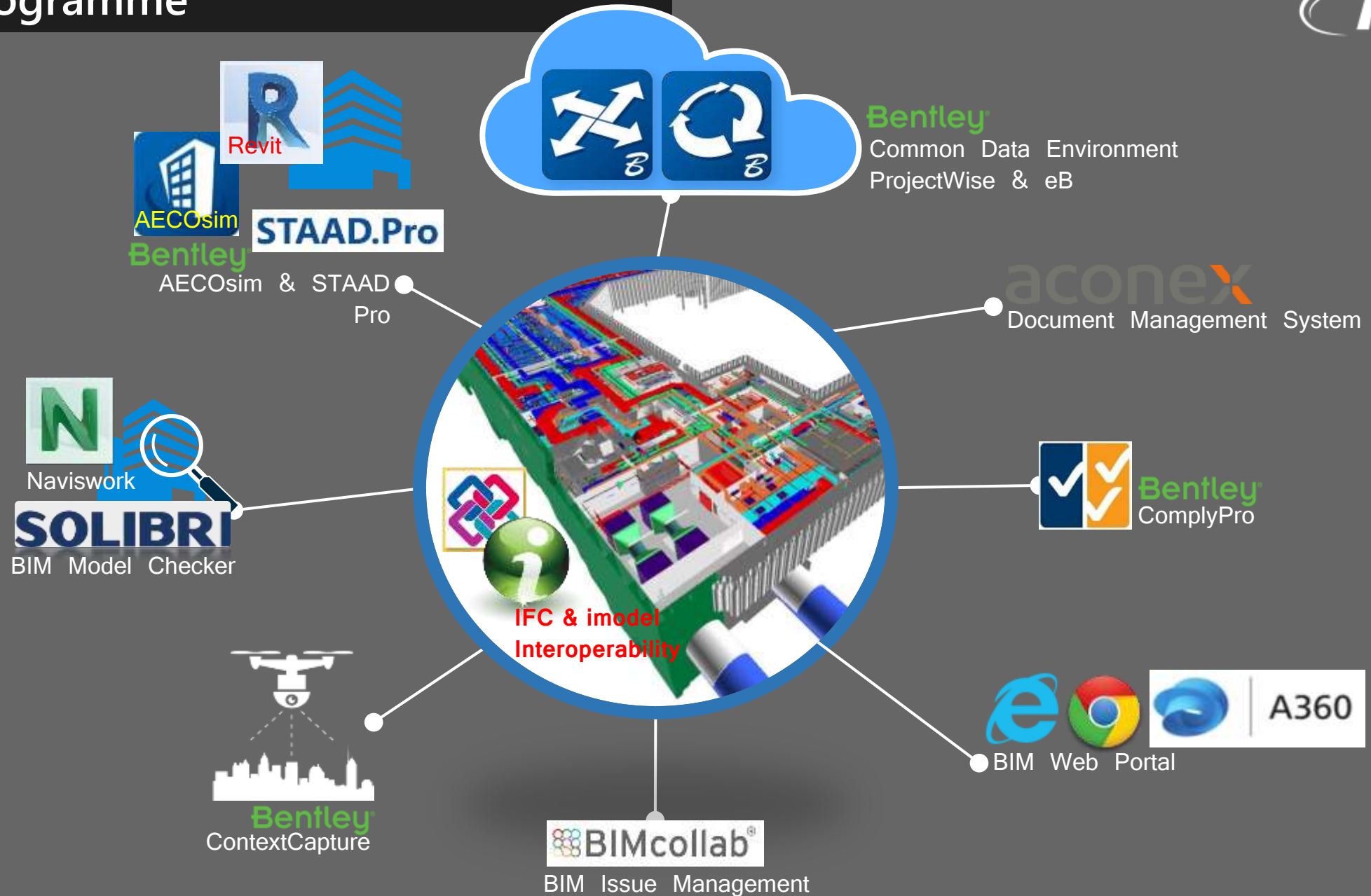
- KVMRT Classification Standard
- BIM in Rail Academy Centre (BIRAC)
- Finalist in Bentley Year in Infrastructure “Be Inspired” competition
- BIRAC open house and BIM Forum

2018

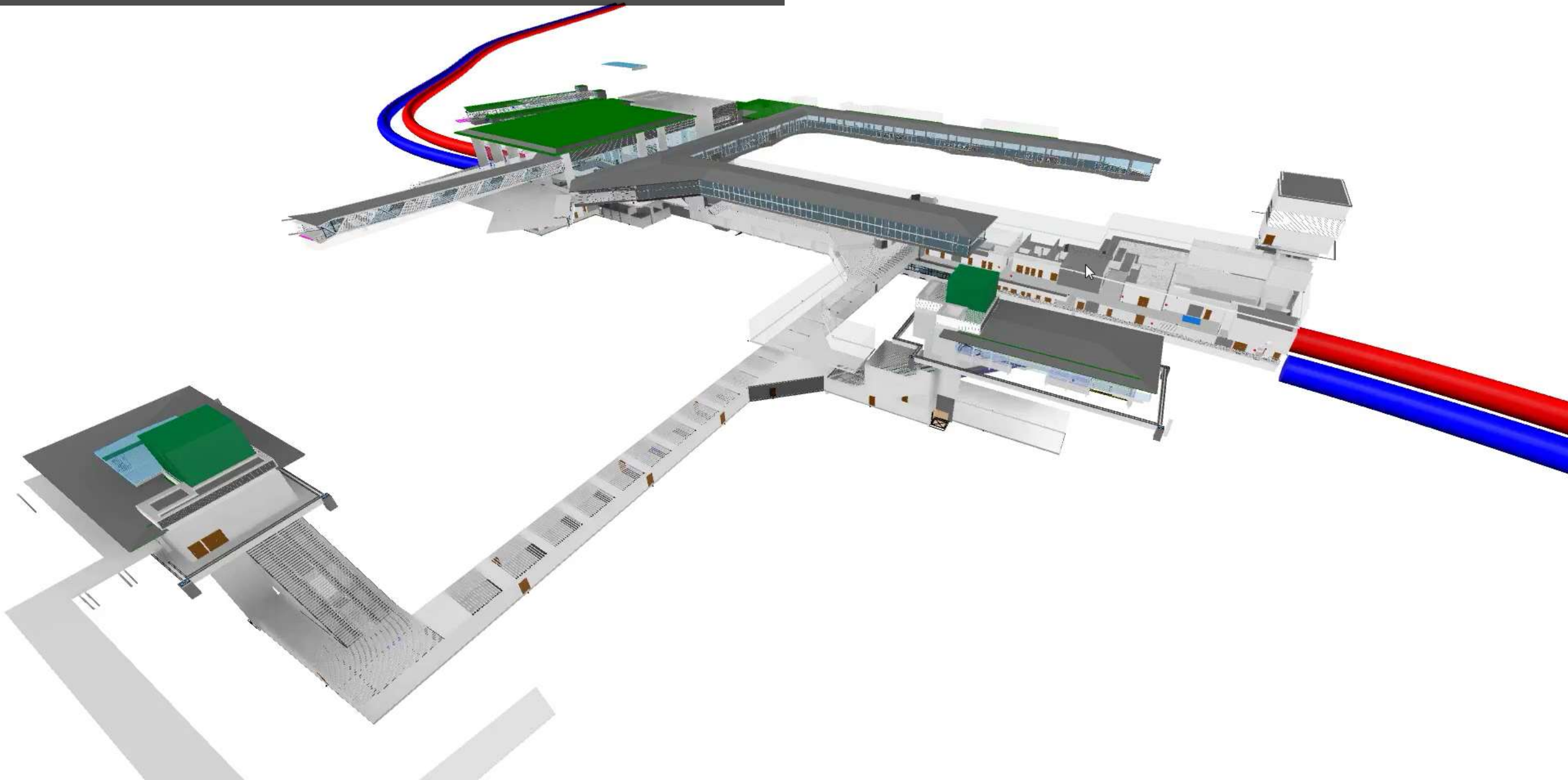
Roll-Out

- Accreditation of BIRAC training programme
- Roll out training module to SSP work package contractor & supply chain
- Publishing BIM White Paper for Digital Engineering

BIM Programme



Virtual Design Review (VDR)



Collaboration



BIMcollab®

Projects Issues Reports Import Settings

Search project

Xian Ping

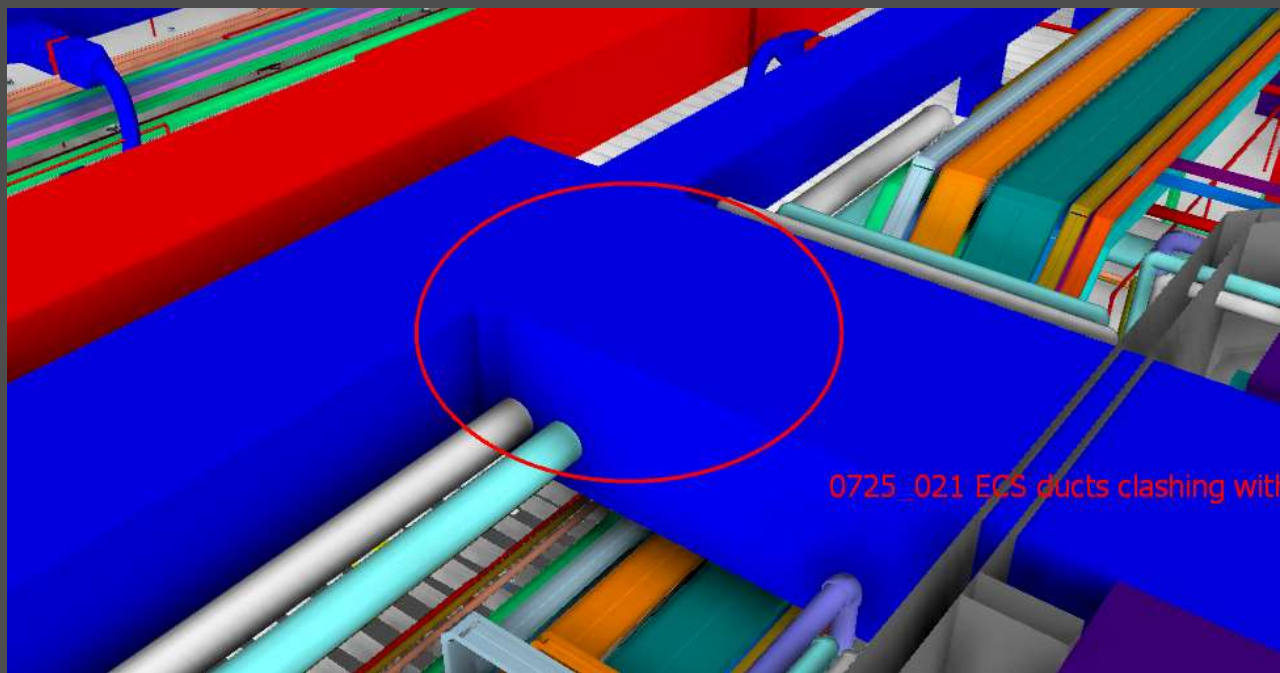
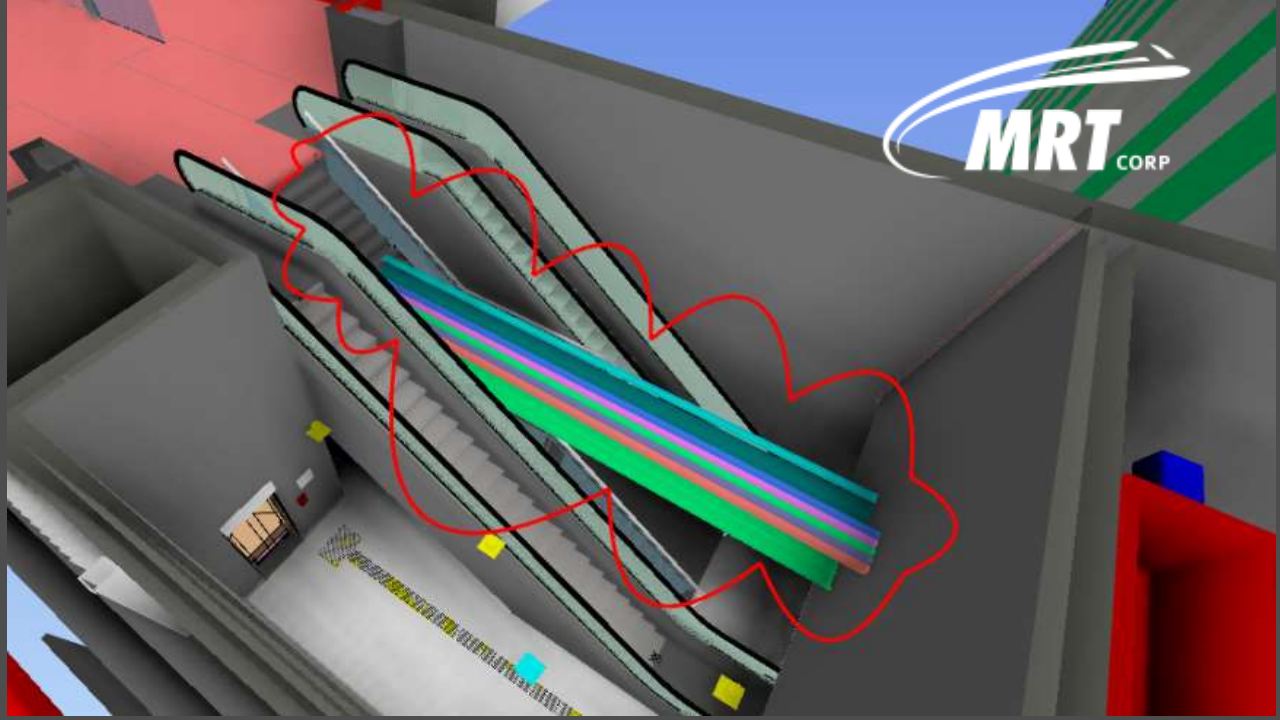
KBNS - Kampung Baru Station



130	0176-CNS - PS	Closed	Martin		Closed
342	170726 VDR - 0...	Resolved	Martin	New comment added	Resolved
262	0310 CNS - OT	Resolved	Martin		Resolved
339	170726 VDR - 0...	Resolved	Martin		Resolved
341	170726 VDR - 0...	Resolved	Martin		Resolved
262	0310 (MRT) - C	Edited	Martin	Assigned to Changed t...	Active
237	170726 VDR - B	Closed	Martin		Closed
336	170726 VDR - B	Closed	Martin		Closed
108	0140 CNS (UPL...	Closed	Martin		Closed
112	0153 MEP (UPL...	Closed	Martin		Closed

Project owner: -
Start date: 13-03-2017
End date: -

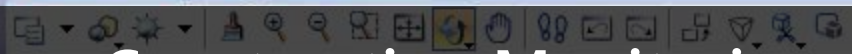
Issues: 447
Team members: 34



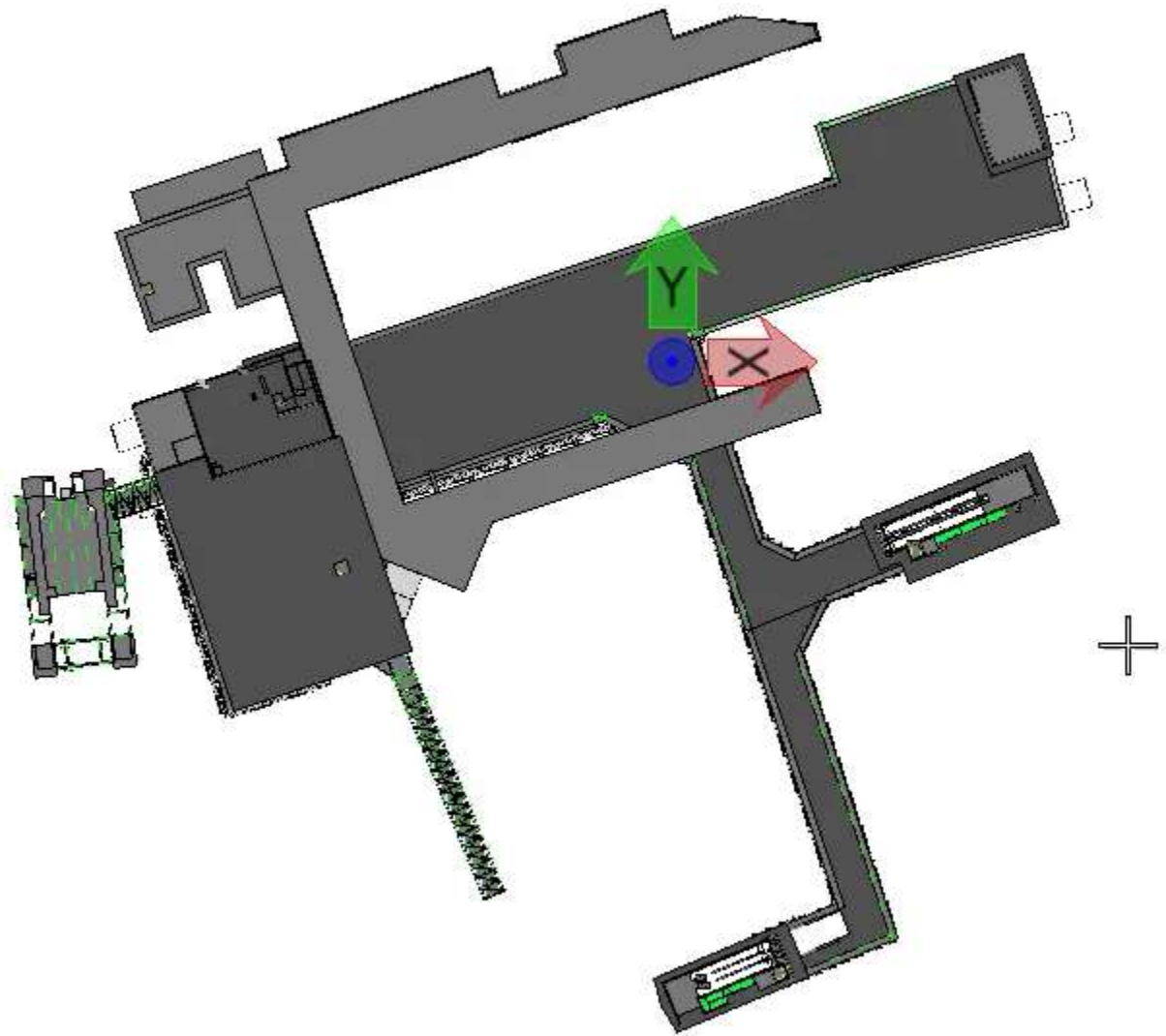
Reality Modelling

Production_1





Construction Monitoring



Rotate View

Method: Yop

Tunnel Monitoring - PoC



SSP Line Map Portal



KVMRT SSP Line Map Portal



ahmadaswadi.yusof@mymrt



.....


Sign in


To register an account, please contact the Spatial Data Manager.


Version 0.1



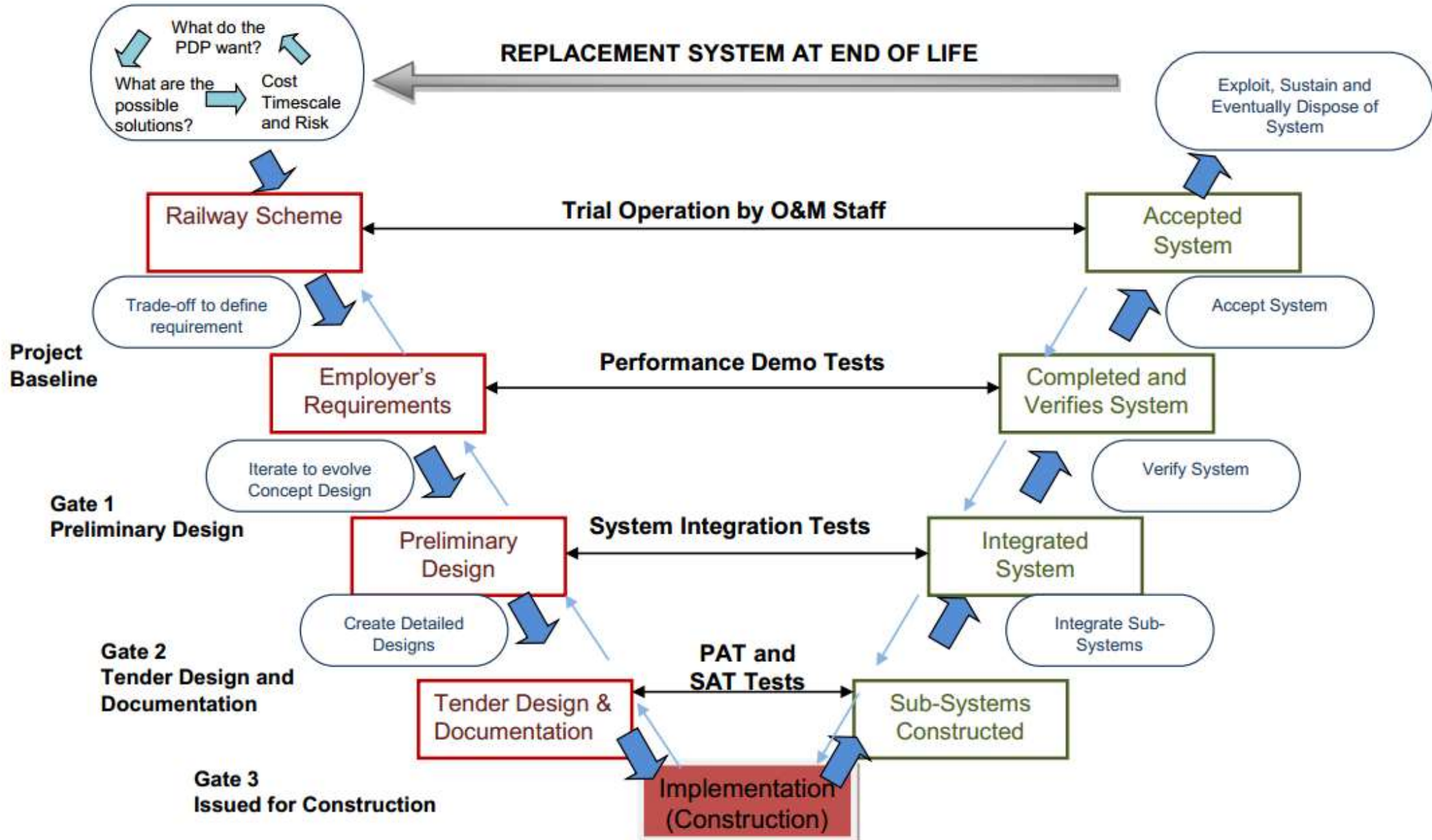
#JOMNAIKMRT

 <https://bim.mymrt.com.my>

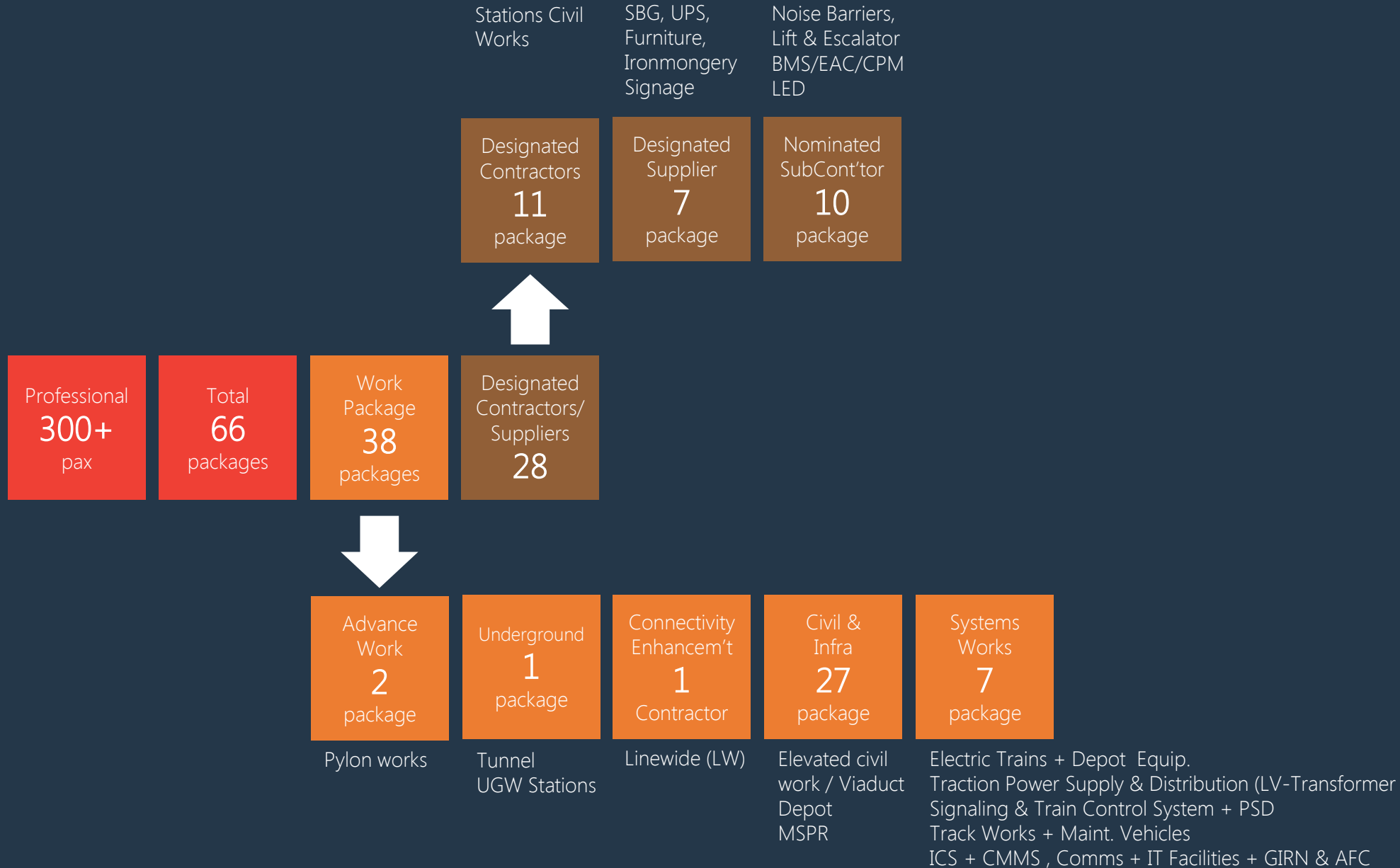
 bim@mymrt.com.my

 03-2081 3000

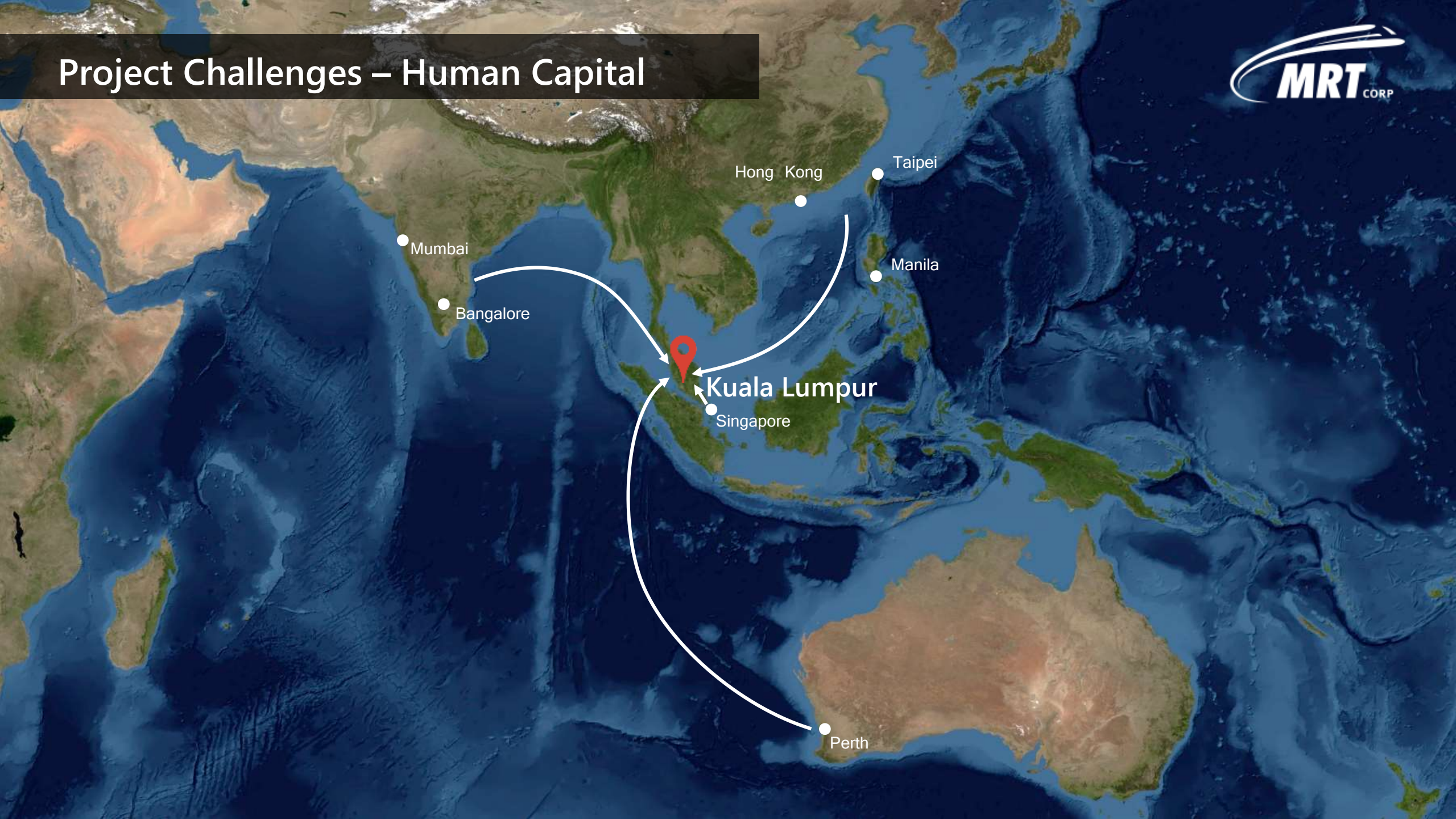
Project Brief – Stations Design



Project Challenges – Planning/Design

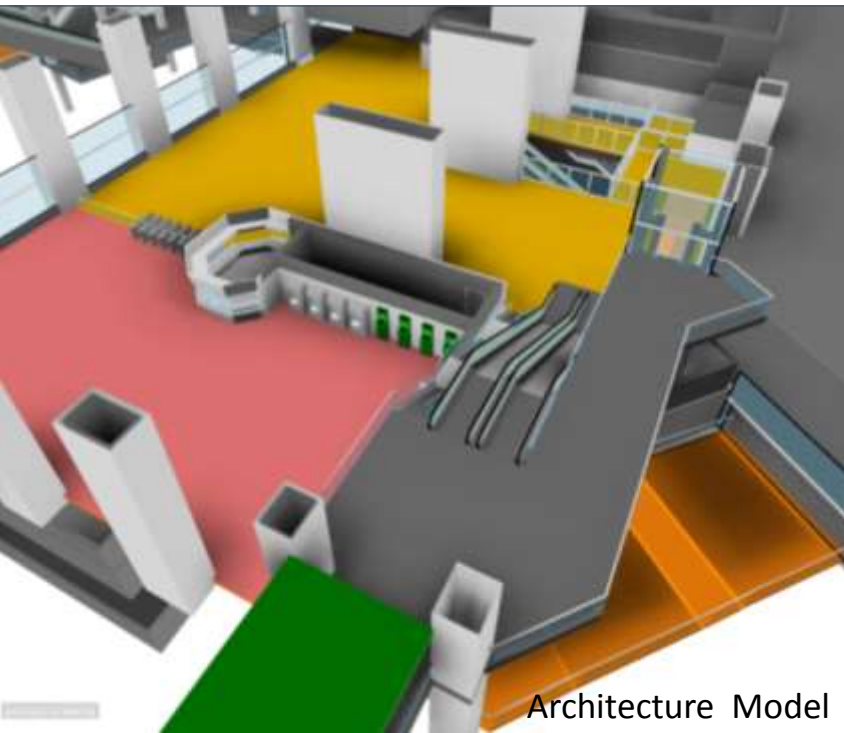
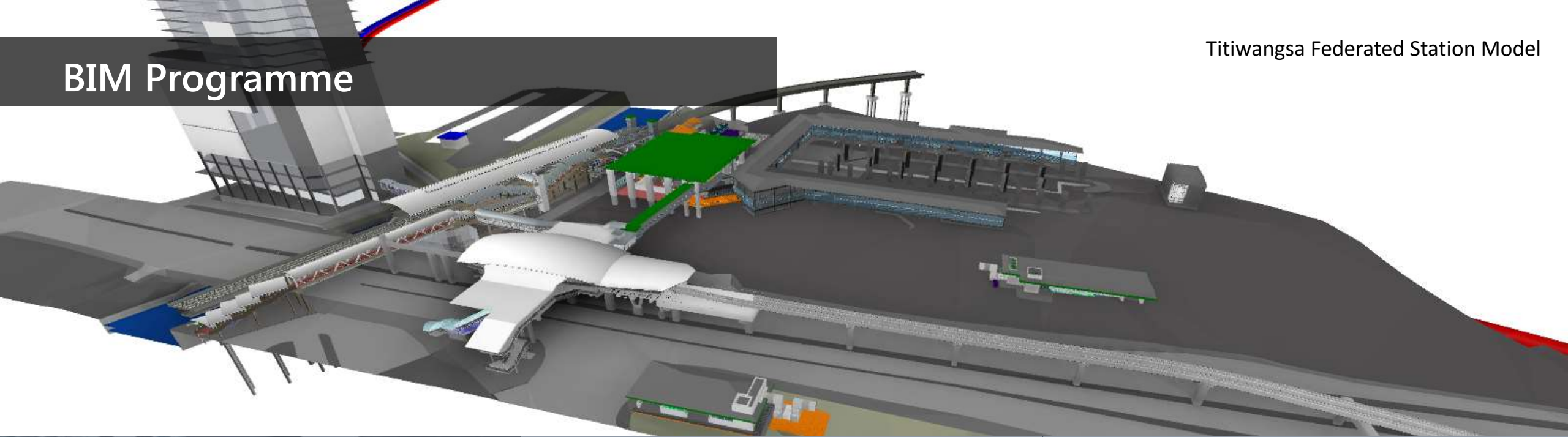


Project Challenges – Human Capital

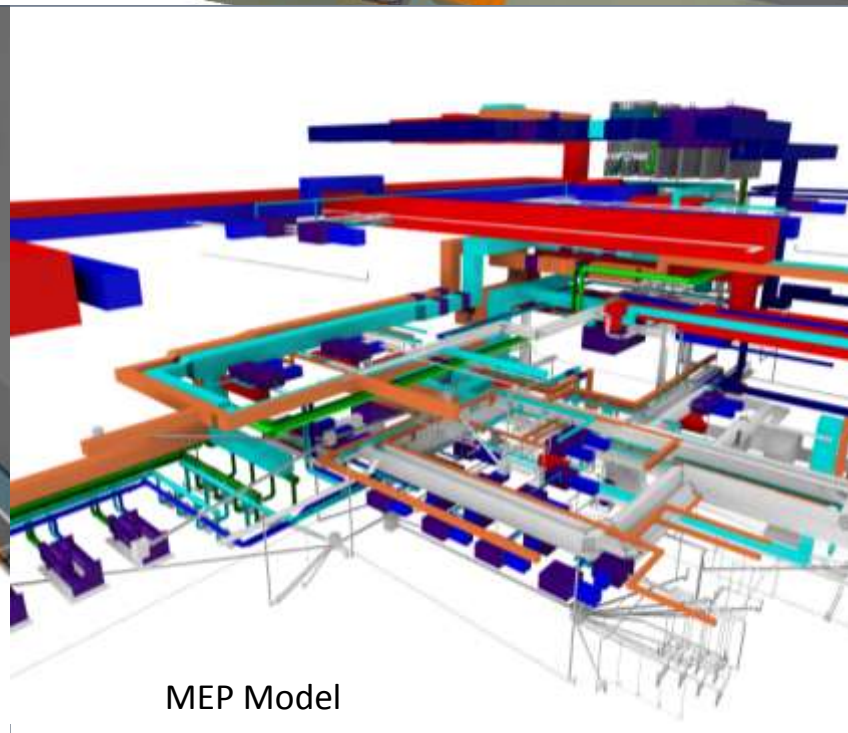


BIM Programme

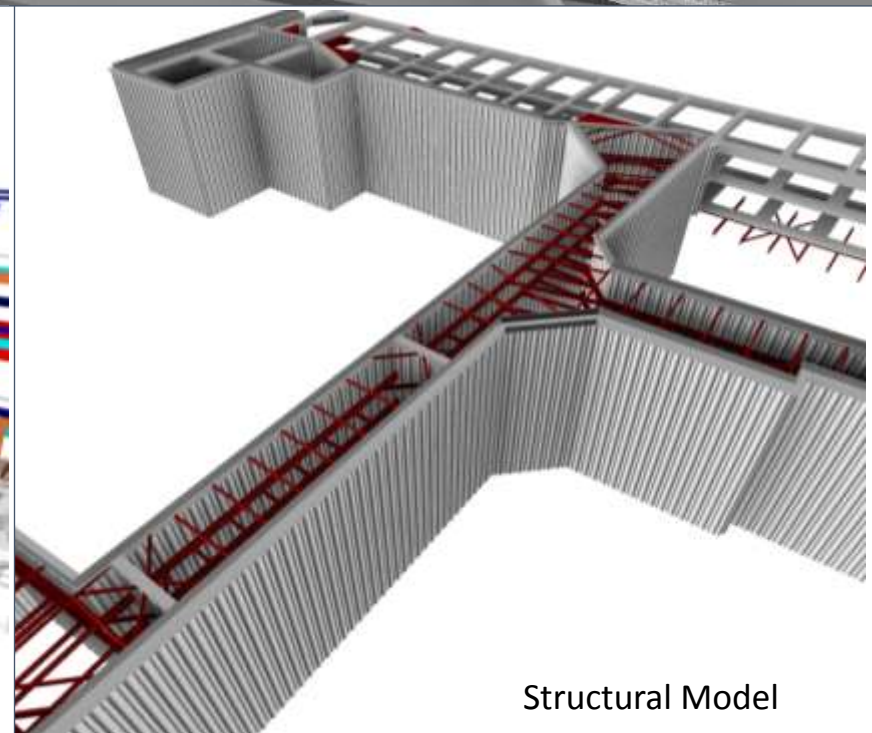
Titivangsa Federated Station Model



Architecture Model



MEP Model



Structural Model

BIM Leader Course (Corporate)

- BIM Business Value 1
- BIM Business Value 2

BIM Manager Course (Management)

- BIM Planning & Execution
- BIM Contract & Legal
- Model Clash Analysis, Collaboration & Review
- Planning & Construction Sequence
- Construction Simulation
- Cost Estimation & QS
- Advance Model

BIM Engineer Course (Engineering)

- MEP Fundamental Modeling
- MEP Advanced Modeling
- C&S Fundamental Modeling
- C&S Advanced Modeling
- Archi Fundamental Modeling
- Archi Advanced Modeling
- Model Clash Analysis, Collaboration & Review
- BIM for Asset Management
- Laser Scanning Acquisition and Processing
- Geographic Information System

Coming Soon