



WRI INDONESIA

# Global Forest Watch: The Role of NGO's Managed Geospatial Information to Support Countries' Sustainable Development

Nirarta Samadhi



Plenary 3: Geospatial Infrastructure and Policy Frameworks: Defining National Geospatial Strategy for Sustainable Development

GeoSmart Asia, 22-24 August 2017, Putra Jaya, Malaysia

# Global Forest Watch ... 70+ partners and collaborators

- Baker & McKinsey
- Blue Raster
- Bobolink Foundation
- Cargill
- CartoDB
- Center for Global Development
- CIAT, CGIAR
- Climate and Land Use Alliance
- Conservation International
- Danish International Development Agency
- Dept. for International Development UK
- Digital Globe
- Esri
- Food & Agriculture Org, UN
- FoodReg
- Global Environment Facility
- Global Forest Watch Canada
- Global Witness
- Google
- Gordon & Betty Moore Foundation
- Greenpeace
- Imazon
- IOI Lodders Croklaan
- IUCN
- The Jane Goodall Institute
- Ministry of Foreign Affairs , The Netherlands
- Mongabay
- Muyissi
- NASA Ames Research Center
- NASA FIRMS
- NASA JPL
- Norway International Climate and Forests Initiative
- OSFAC
- OSINFOR
- Planet Labs
- Rainforest Foundation UK
- Reforestamos Mexico
- RESOLVE
- Roundtable on Sustainable Palm Oil
- SarVision
- ScanEx
- Swedish Intl. Development Cooperation Agency
- The Tilia Fund
- Transparent World
- UNEP / WCMC
- University of Maryland
- University of Minnesota
- Unilever
- United States Agency for International Development
- Vizzuality
- Winrock
- Woods Hole Research Center
- World Resources Institute
- Yayasan Puter Indonesia
- Zoological Society of London



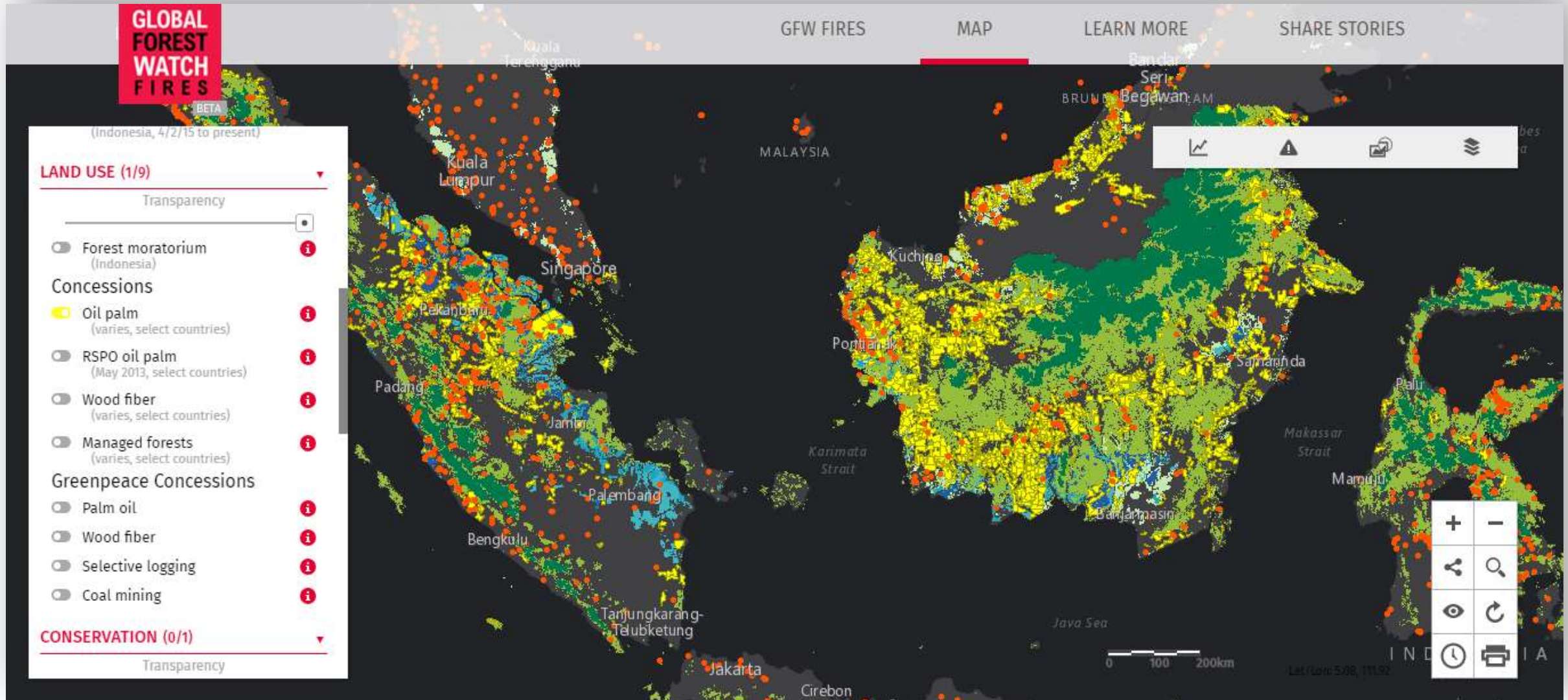
# Global Forest Watch does ...



Intensified forest clearing in SE Asia  
Peninsular over the past 15 years



# Global Forest Watch does ... forest and peat fires analysis



# Global Forest Watch does ... useage of analytics and infographics in media

## Haze crisis turns deadly

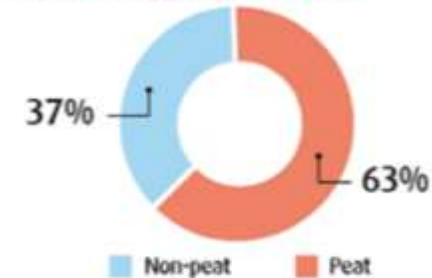
Jon Afrizal and Syofiardi Bachyul, The Jakarta Post, Jambi/Padang | Headlines | Mon, September 14 2015, 6:03 PM



On the front line: Soldiers extinguish a peat fire in Rimbo Panjang, Kampar, Riau, on Sunday. The government has deployed troops to assist in efforts to control fires in Sumatra that have caused dangerous levels of air pollution on the island of Sumatra and in neighboring Singapore and Malaysia.(Antara/Nova Wahyudi)

The Jakarta Post

### Portion of fires occurring on peat land

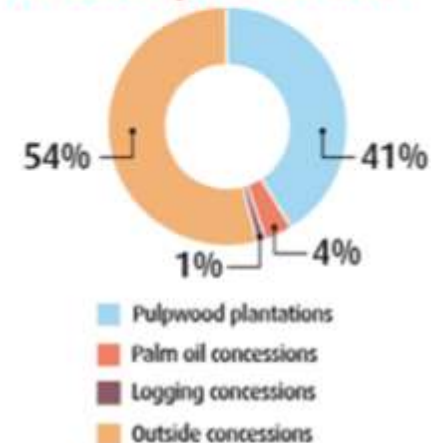


### Concessions with highest number of suspected fires

#### Pulpwood

Firm	Hot spots
• PT Rimba Hutani Mas	281
• PT Bumi Andalas Permai	107
• PT Musi Hutan Persada	59
• PT Bumi Mekar Hijau	25
• PT Sebangun Bumi Andalas Wood	17
• PT Koperasi Wana Karya Lestari	16
• PT Paramitra Mulia Langgeng	10
• PT Wirakarya Sakti	8
• PT Ciptamas Bumi Subur	5

### Fire alerts by land use area



#### Palm oil

• PT Eramitra Agro Lestari	10
• PT Alam Sari Lestari	9
• PT Bahari Gembira Ria	5
• PT Kaswari Unggul	5
• PT Roempoen Enam Bersaudara	4
• PT Indolampung Perkasa	4
• PT Tidar Kerinci Agung	3
• PT Wachyuni Mandira	2
• PT Langgam Inti Hibrido	2

#### Logging

• PT Bumi Pratama Usaha Jaya	8
• PT Restorasi Ekosistem Indonesia	2
• PT Putraduta Indah Wood	1

Source: Global Forest Watch (Sept. 5-12)



# Global Forest Watch does ... catalyzing civic engagement





**Among the first steps towards sustainable development is forest and land governance improvement ... One Map Policy is one of the Government of Indonesia's strategic paths.**

**Forest and land governance improvement –in simplicity– hinges on single authoritative map –the One Map. It starts with synchronization of boundaries of all entities: forest estate, village administrative area, customary forest, company's concession, smallholder's parcel, local community settlement, and so forth.**

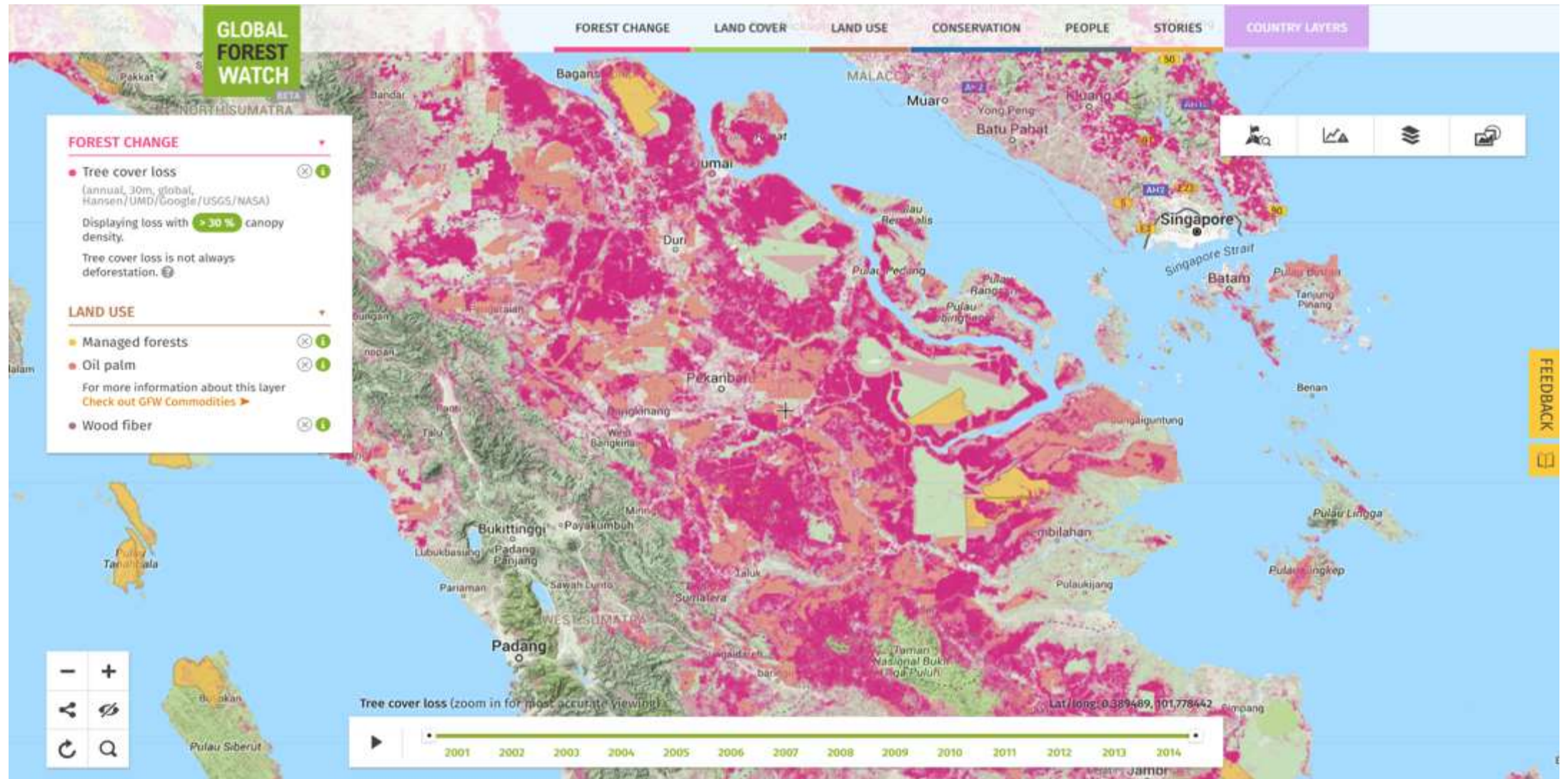
**In practice, the One Map Initiative at the sub-national level allows for direct support to sustainable development and sustainable land use on the ground.**

**Without this basic prerequisite, government will not be able to achieve public welfare by optimizing economic function of forest and land while protecting the environment.**



# Why Riau ..?

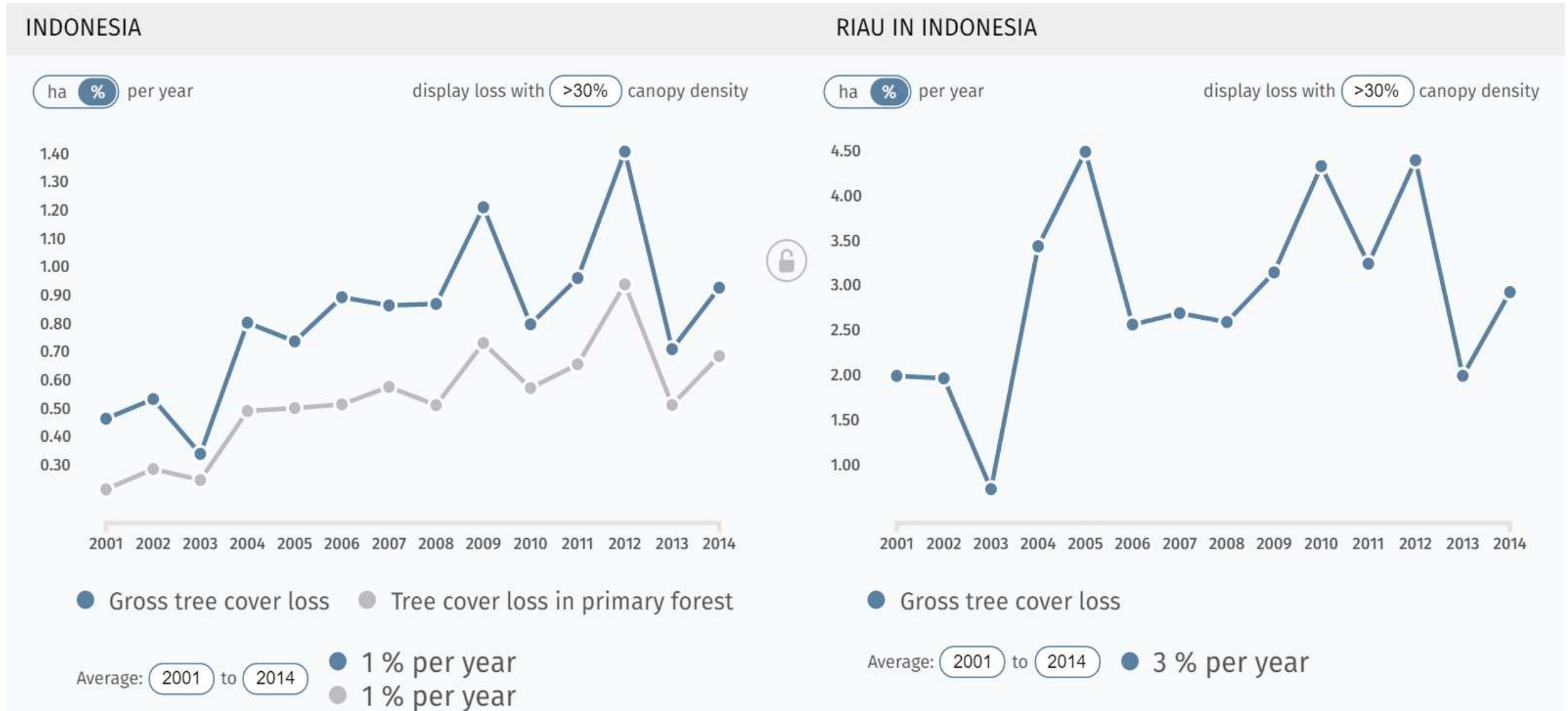
- 1 Riau Province has been known as a jurisdiction which has many land use challenges; from land claim induced social conflict, environmental damage caused by illegal logging, frequent forest and peat fires to long overdue provincial spatial plan.





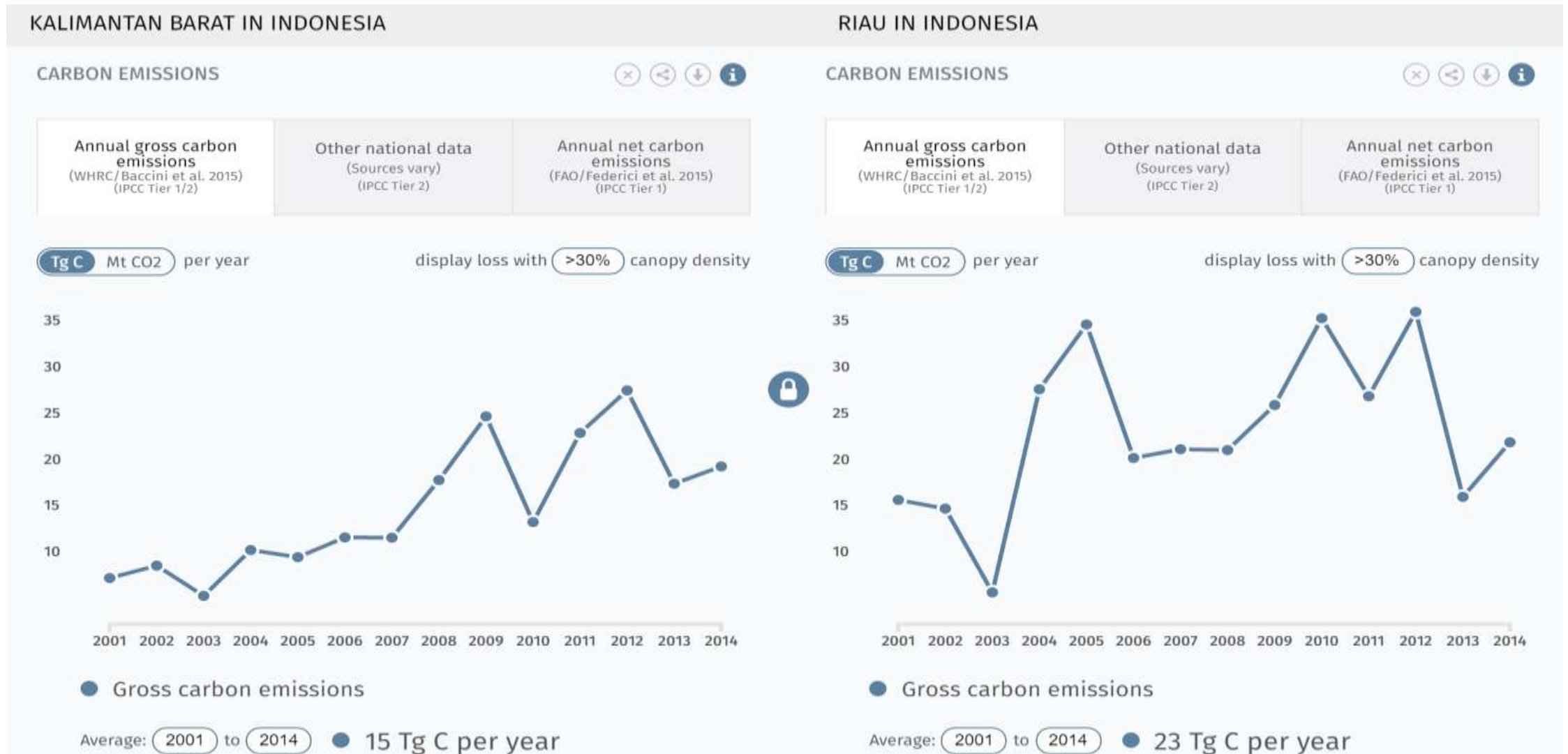
# Why Riau ..?

2 Compared to the national average of tree cover loss, the graph below shows the percentage of tree cover loss in Riau was always above national average.



# Why Riau ..?

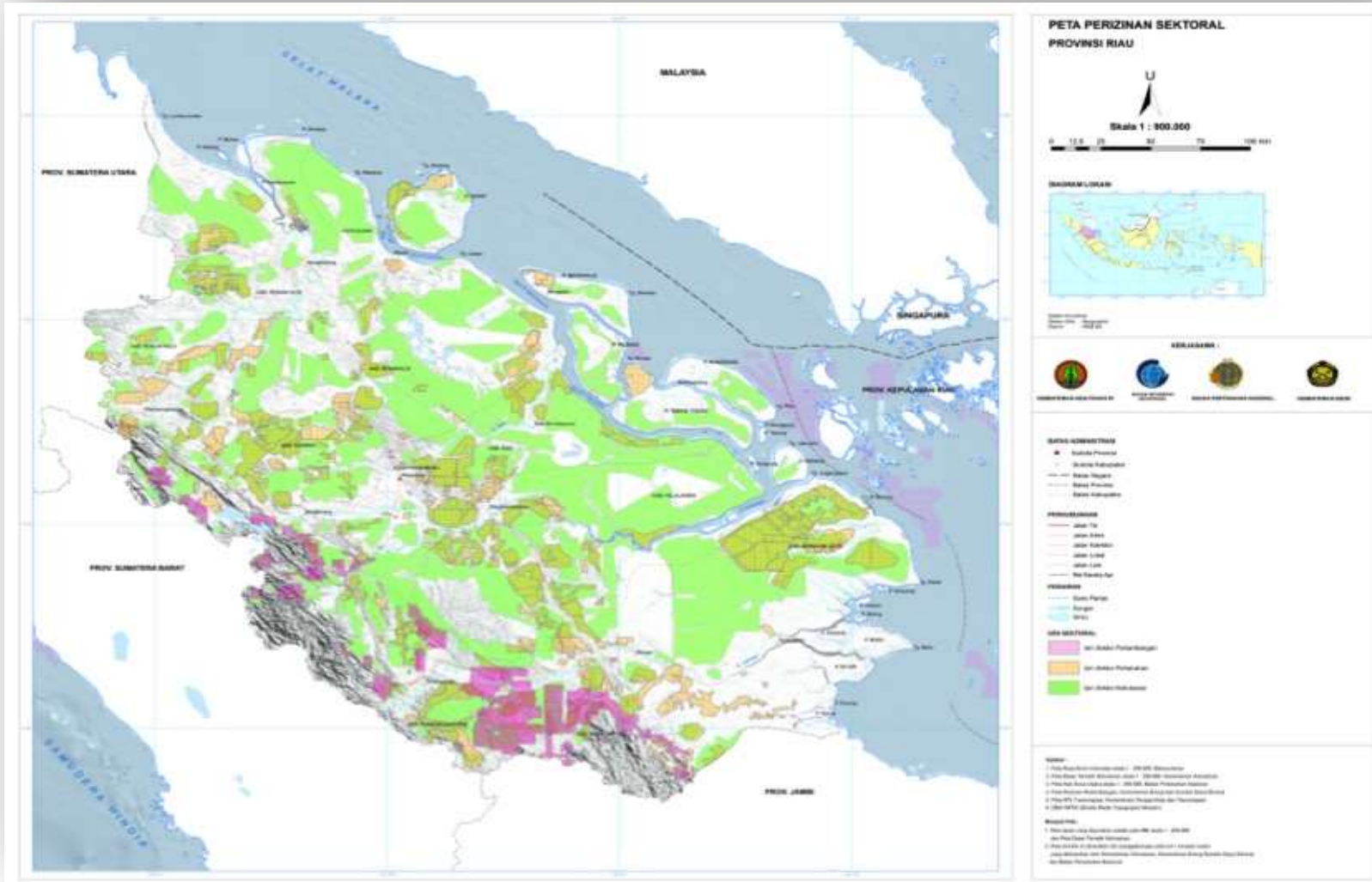
3 With peatland covers 43% of the total land in Riau, forest and peat fires that happened every year at least for the past 18 years place Riau as among GHG emission biggest contributors for Indonesia.





# Why Riau ..?

4 President's Delivery Unit, National REDD+ Taskforce, REDD+ Implementation Agency and Ministry of Forestry produced Riau Indicative One Map (2014-2015) which is a compilation of maps and other geospatial information of Riau Province.



Riau Province  
8.702.366 Ha

Total area with concessions 5.679.466  
Hectares (65,2%)

Mining Concessions	380.586 Ha
Plantation Concessions	1.361.362 Ha
Forestry Concessions	3.937.518 Ha



Tesso Nilo National Park, Riau.  
Satellite image, 5 July 2015  
0°7'49.87"S ; 101°45'0.04"E

NEWLY  
DEFORESTED  
LAND

FOREST BEING BURNED TO  
CLEAR UP LAND FOR  
PLANTATION

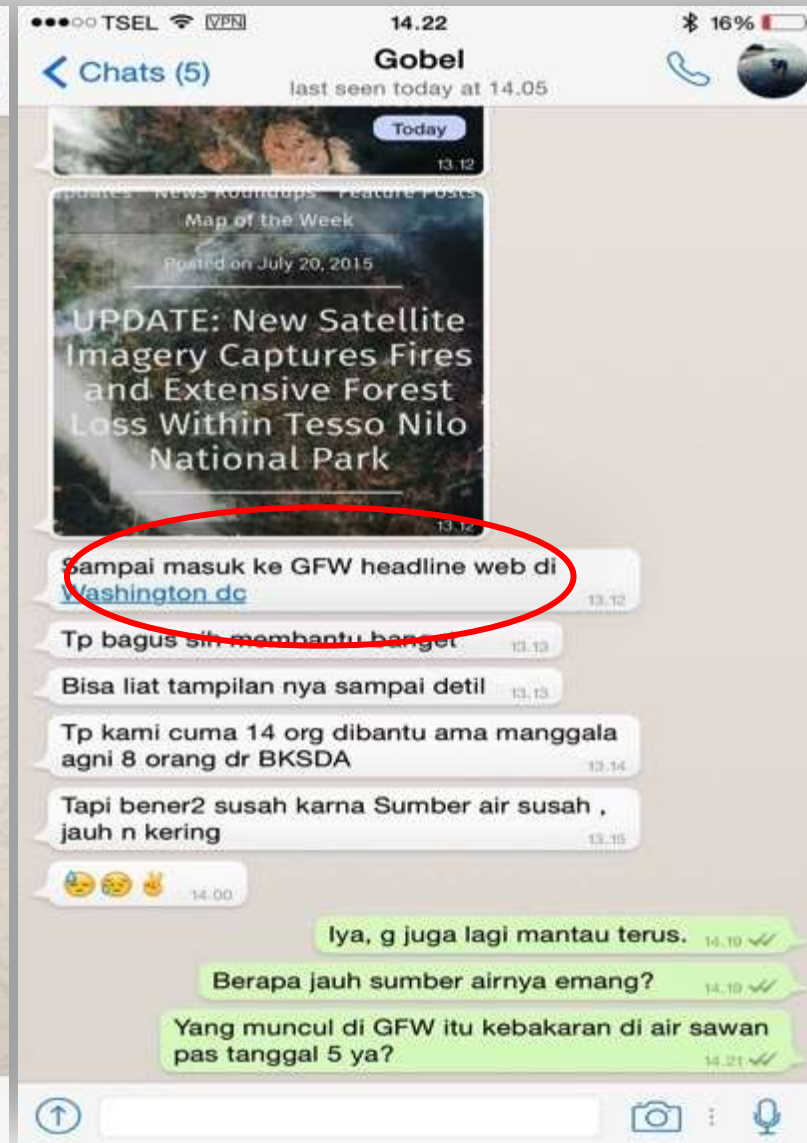
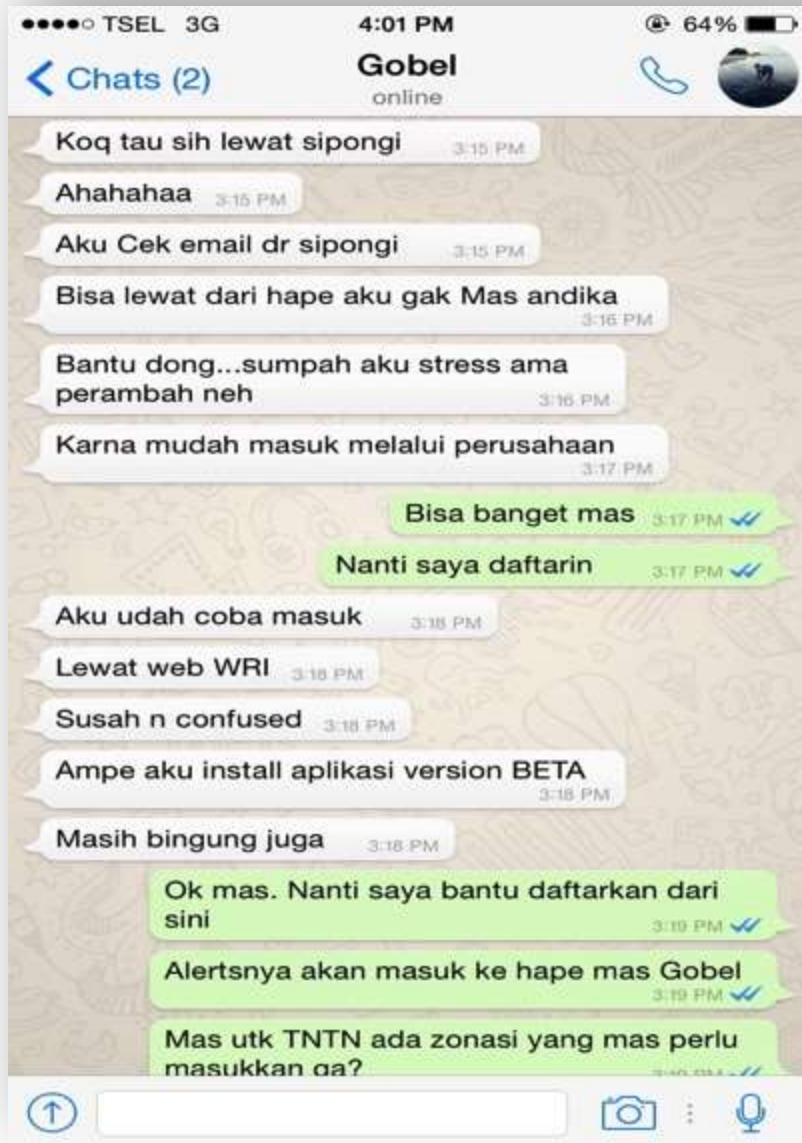
NEW PLANTATION AREA  
PREPARATION

NEW OIL PALM  
PLANTATION

- Basic infrastructure for land use management need to be improved
- Legal certainty on land is weak
- Law enforcement on land use violation is weak
- Social issues and historical factors on land use are rarely touch or take into consideration

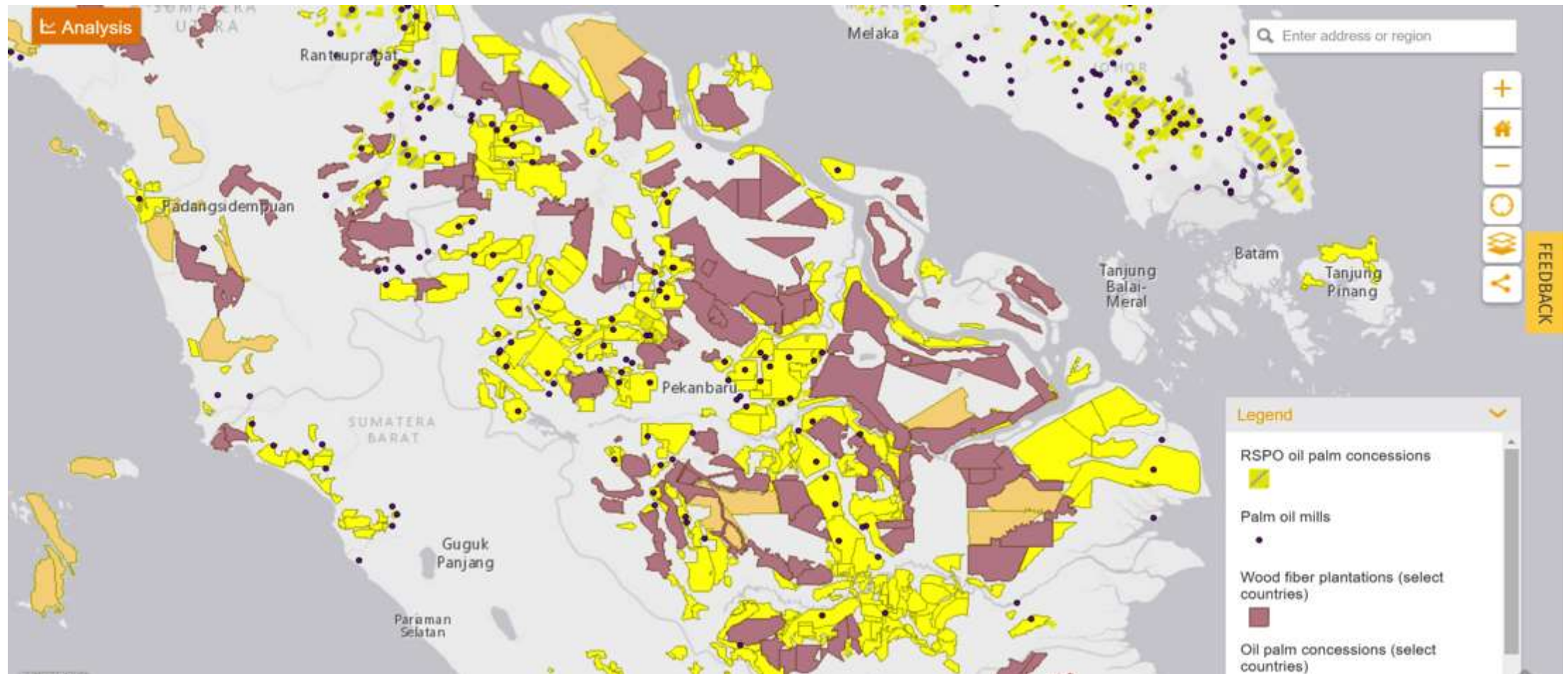


# Tesso Nilo National Park, 5 July 2015, 0°7'49.87"S ; 101°45'0.04"E ... in the heat of fires, GFW being used by a national park ranger



# Riau One Map ... one map initiative at the sub-national level

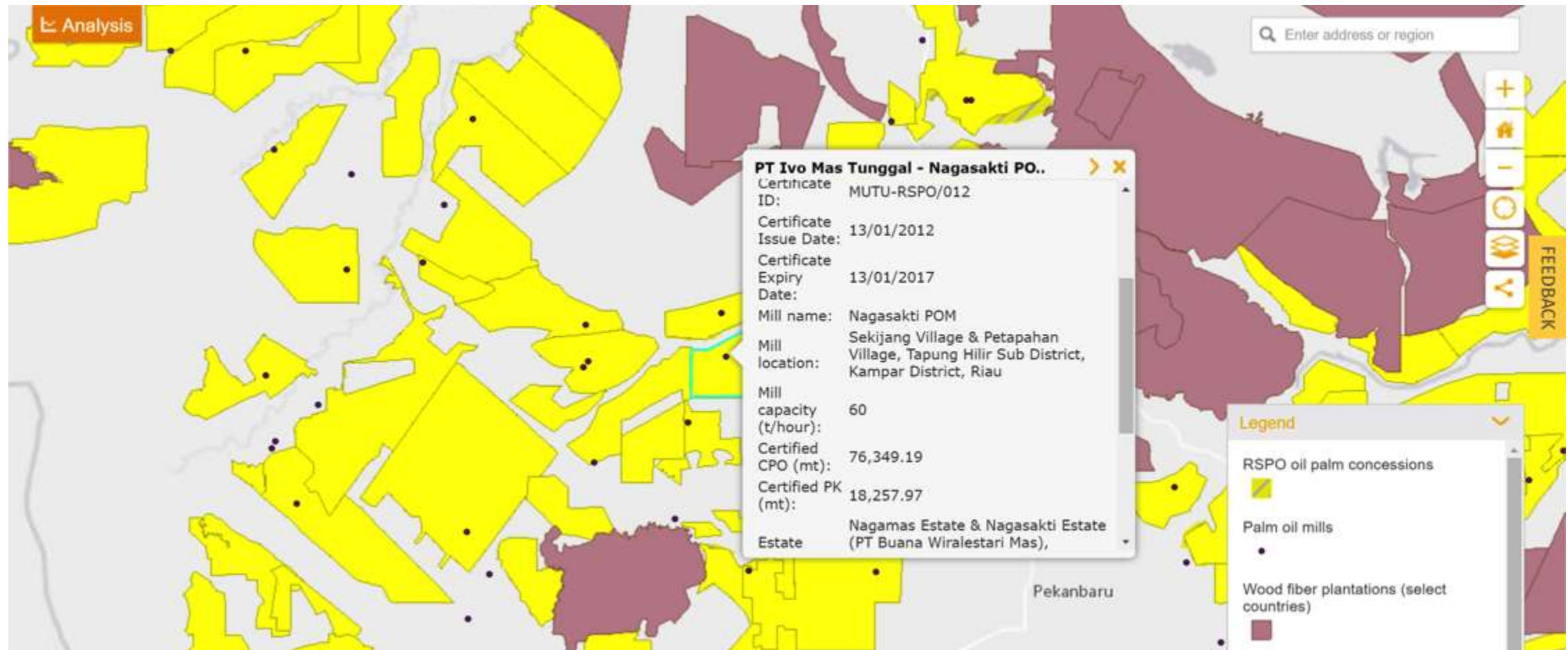
Creating and populating Riau One Map database through multi stakeholders forum to speed up the data collection process, to enlarge the coverage areas, to better coordinate similar efforts. The database will be the starting point to explore and formulate land use solutions for a better forest and land governance.



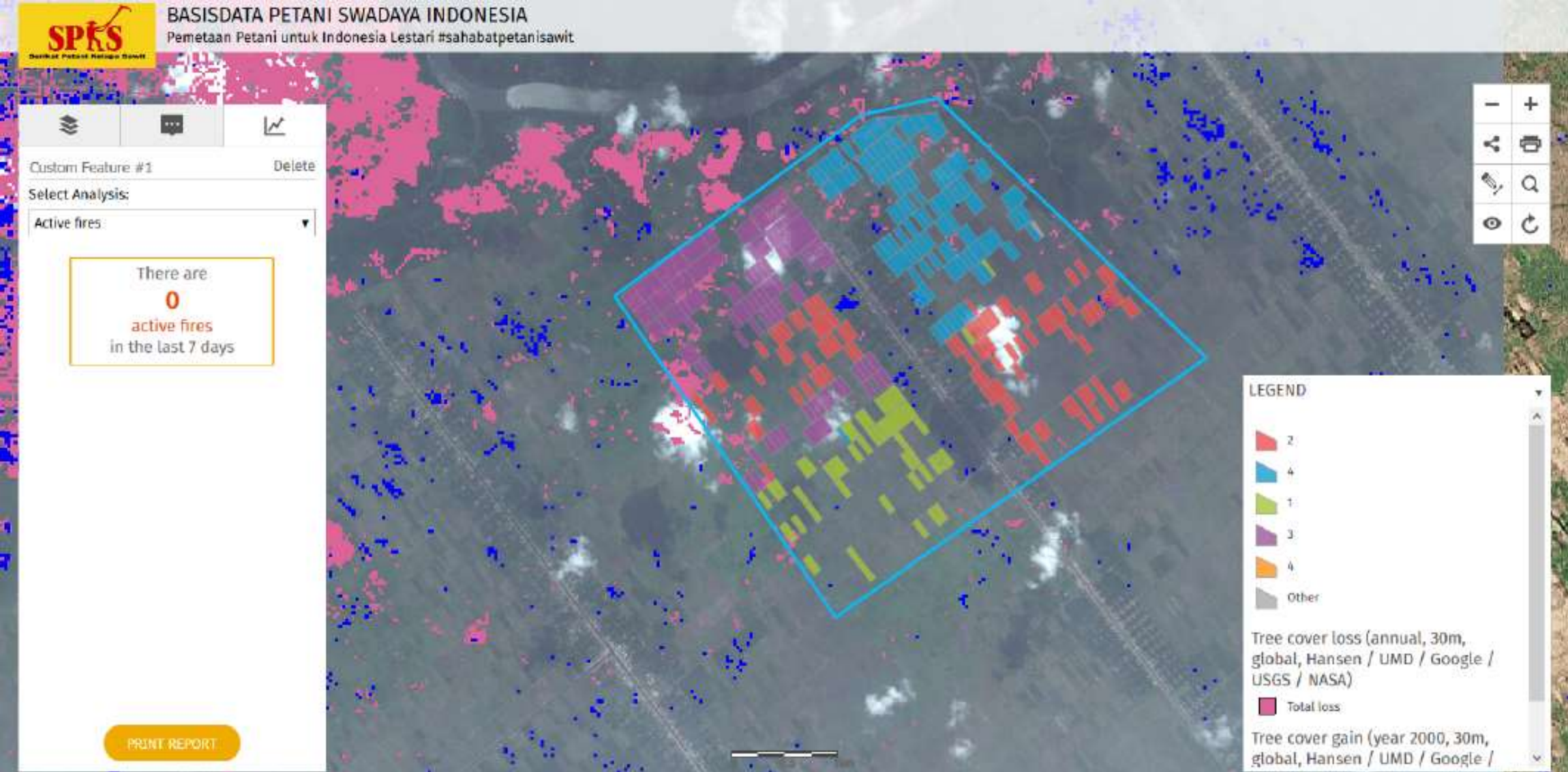


# Riau One Map ... one map initiative at the sub-national level

More detailed and granular data and collaboration with major producers (e.g on independent smallholders suppliers map), will enable stakeholders to comply with sustainability standard and achieve supply chain traceability for the most part of Riau. This will enable the government to monitor the land use development.

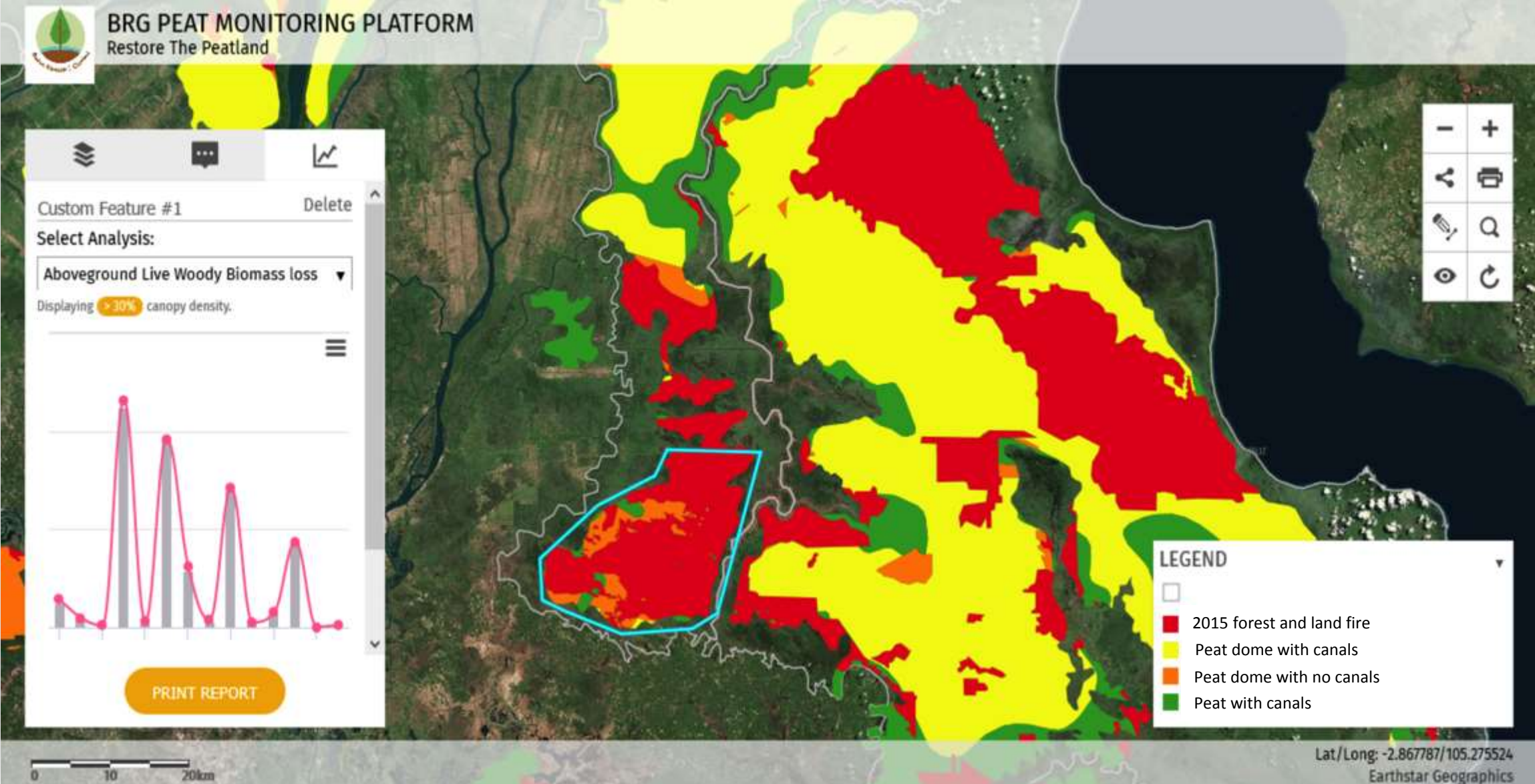


# GFW Map Builder helps independent oil palm smallholders association build their database to support production of sustainable oil palm in Riau





# GFW Map Builder supports peat restoration program in Riau and South Sumatera





WRI INDONESIA

# Global Forest Watch: The Role of NGO's Managed Geospatial Information to Support Countries' Sustainable Development

Nirarta Samadhi



Plenary 3: Geospatial Infrastructure and Policy Frameworks: Defining National Geospatial Strategy for Sustainable Development

GeoSmart Asia, 22-24 August 2017, Putra Jaya, Malaysia