

GE
SMART
ASIA 2018



Locate
#Locate18



WHEN

9 – 11 APRIL 2018

WHERE

ADELAIDE, AUSTRALIA

[CLICK HERE TO KNOW MORE](#)

A nighttime photograph of the GIFT city in Gujarat, India. The image shows several modern, multi-story buildings with illuminated windows and facades. A wide, multi-lane road with streetlights runs through the center of the city. The sky is dark, and the overall scene is lit up by the city lights.

India's 1st Operational Smart City & IFSC



Shri Narendra Modi
Prime Minister of India

“The vision of Gujarat would be incomplete without capitalising on the in-house financial business acumen.

To tie-up with technology, to create a hub complete with infrastructure, to meet the needs of modern Gujarat, modern India and to create a space in the global financial world...that is my dream”

- As India experiences continued economic growth, the financial sector could generate about 10-11 million jobs and a GDP contribution of US\$ 350 to 400 billion by 2020.
- Several developed countries have successfully established high-tech financial hubs, which over time have catered as international financial services centers like in Singapore and Hong Kong
- India is not able to fully realize it's vast potential in financial services because our cities do not have the required infrastructure.
- If India wants to compete with international financial hubs, our cities will have to provide global standards in infrastructure, office space, internet and telephone connectivity and lifestyle opportunities which would attract top talent.
- GIFT aspires to cater to India's large financial services potential by offering global firms a world-class infrastructure and facilities. It aims to attract the top talent in the country by providing the finest quality of life.
- It is estimated that GIFT would provide 500,000 direct and an equal number of indirect jobs which would require 5.76 million square meter of real estate office and residential space



GUDC



IL&FS



Joint Venture Agreement

GIFTCL

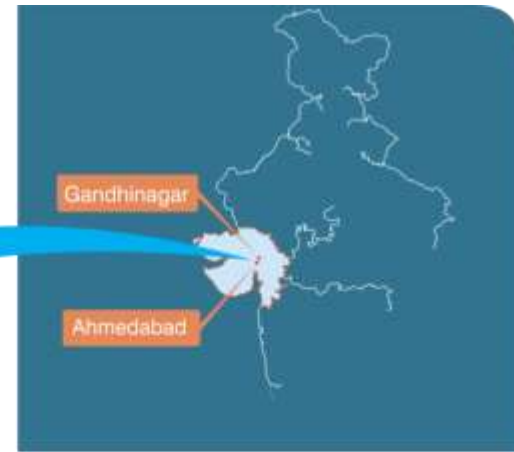
Buildings

Infrastructure

Developers

- GIFT SEZ Limited
- GIFT District Cooling Systems Limited
- GIFT Water Infrastructure Limited
- GIFT Waste Management Services Limited
- GIFT Power Company Limited
- GIFT ICT Services Limited

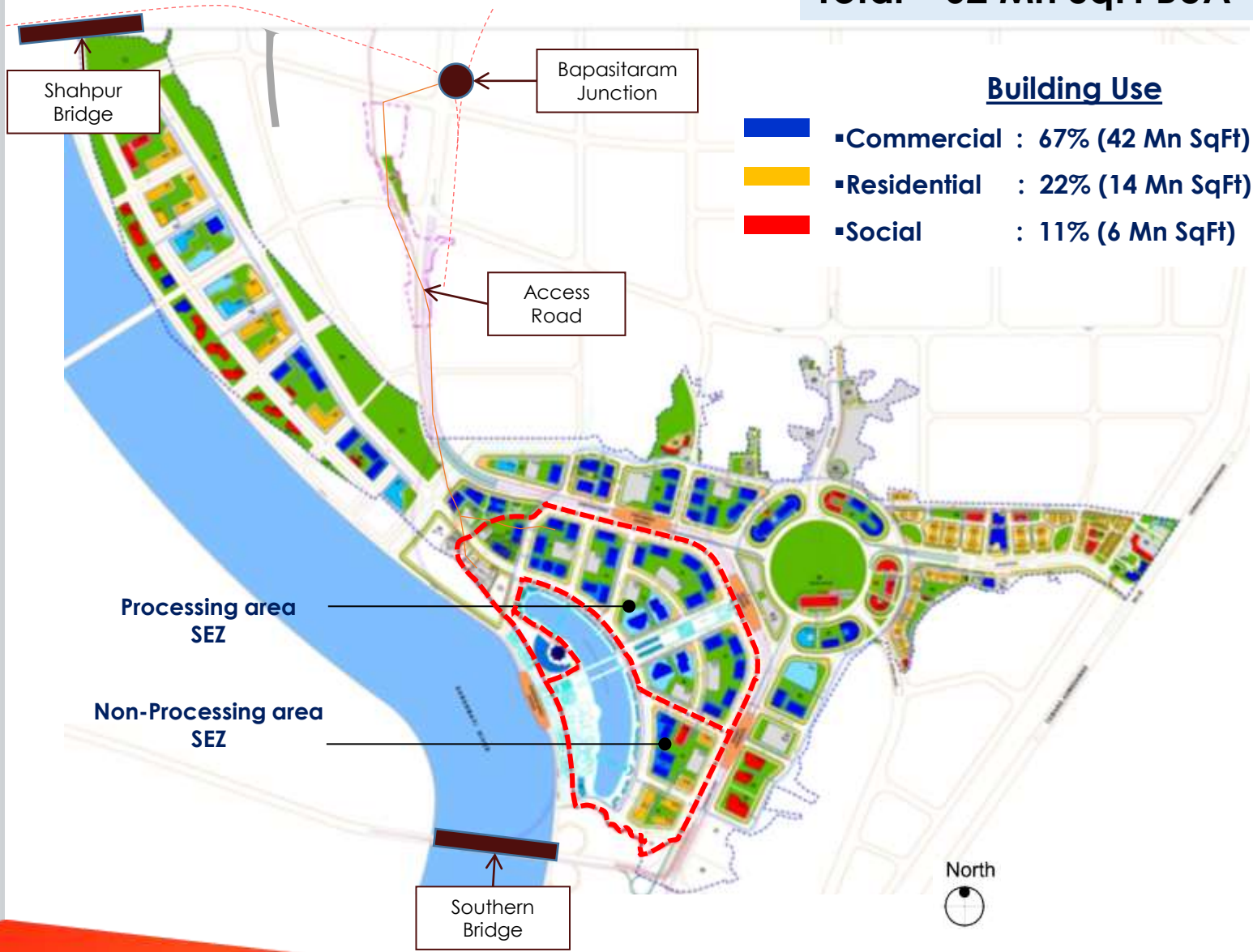
GIFT Development Framework



- 12 kms from Ahmedabad International Airport (8th Busiest in India).
- 6 kms for Gandhinagar (Political capital of Gujarat)
- On the banks of Sabarmati River.
- Along Delhi-Mumbai Industrial corridor.
- Metro connectivity to Ahmedabad (Approved by Govt. of Gujarat)
- Bullet Train connectivity between Ahmedabad-Mumbai (Under planning by Govt. of India.)

Strategic Location

Total – 62 Mn SqFt BUA

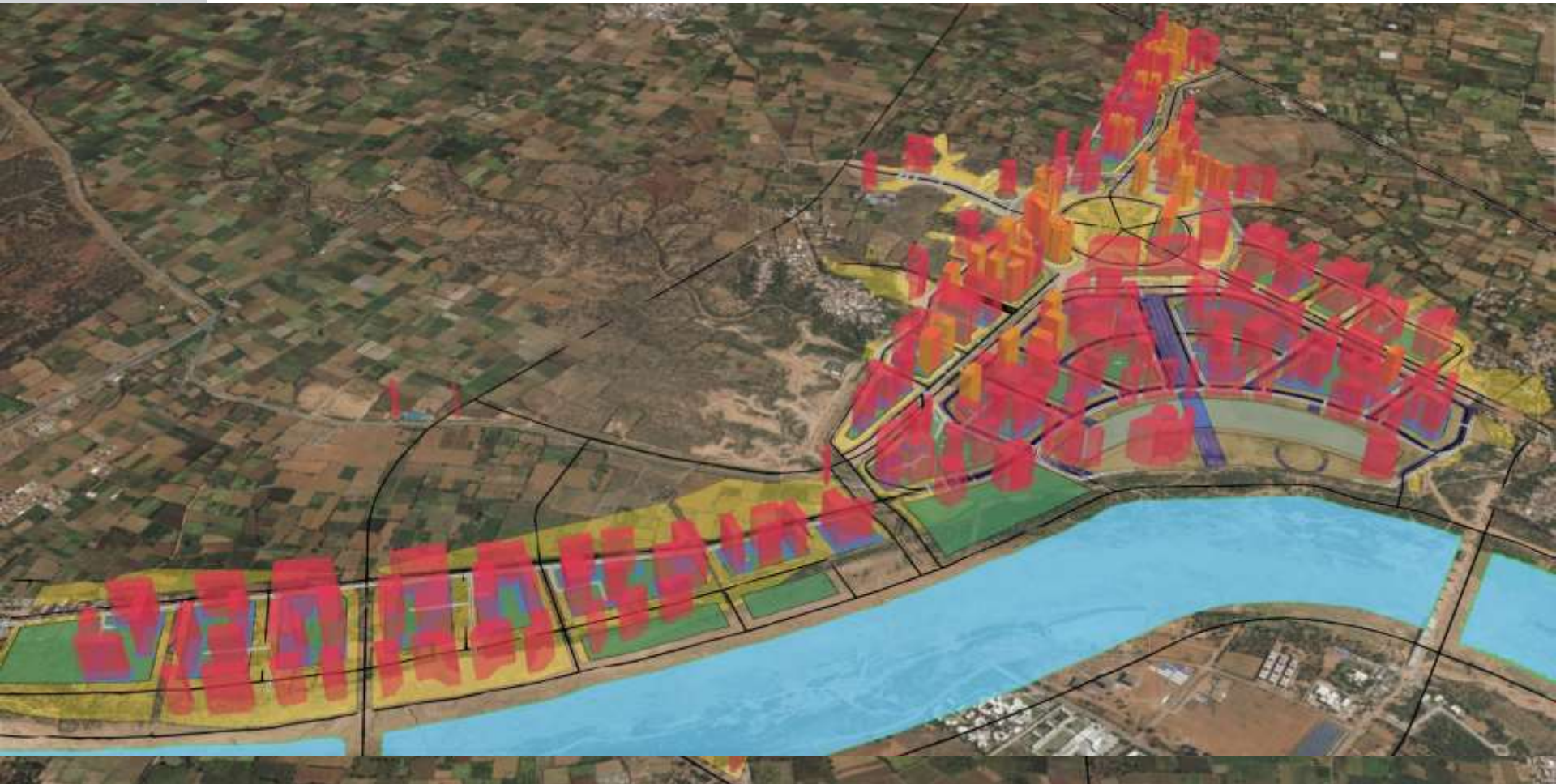


- To effectively plan Infrastructure, utilities, buildings, Landscape and communities, GIFTCL uses ESRI's ArcGIS to view and analyze large datasets in three dimensions.
- GIS provided a framework to collect data, share information, collaborate, and conduct cross departmental analysis in order to become more efficient and informed about the population, resources, infrastructure, and the activities that are affecting GIFT City.
- After integrating the Master Plan, Infrastructure Plan, Utility Plan Landscape Plan, the impact of a proposed change can be measured in a virtual world while in the design or planning stage.
- Application Areas of GIS in GIFT –
 - ✓ Urban management
 - ✓ Commercial applications
 - ✓ Public services
 - ✓ Safety / Emergency Management
 - ✓ Disaster Management
 - ✓ e-Governance
 - ✓ Marketing and retailing
 - ✓ Land resources
 - ✓ Land use Planning & Design, Architecture, Landscape, etc.
 - ✓ land records for taxation and ownership controls,
 - ✓ Environment
 - ✓ Transportation & Logistics
 - ✓ Infrastructure planning and civic services
 - ✓ Utilities & Facilities management

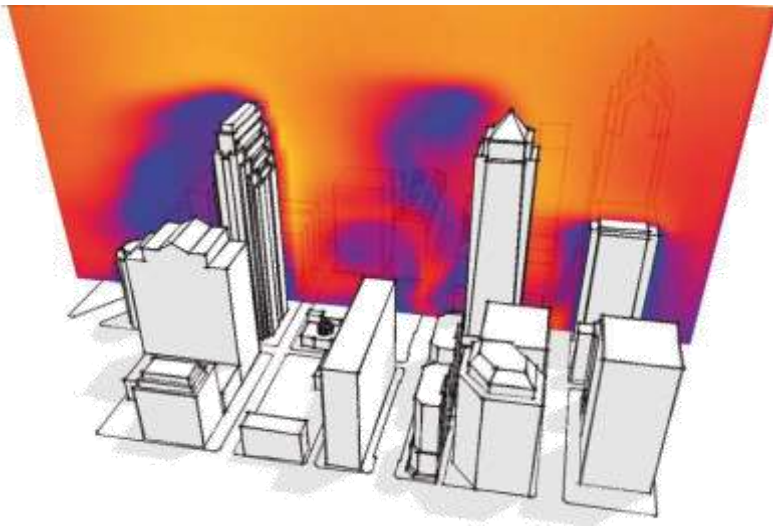




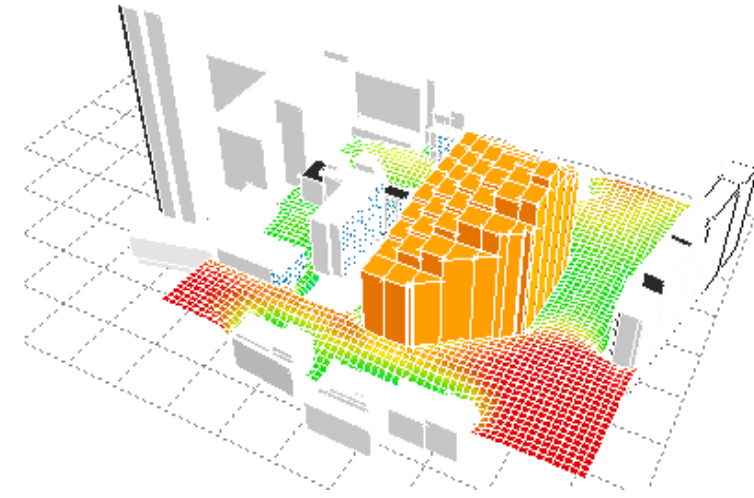
GUJARAT INTERNATIONAL
FINANCE TEC-CITY
www.giftgujarat.in



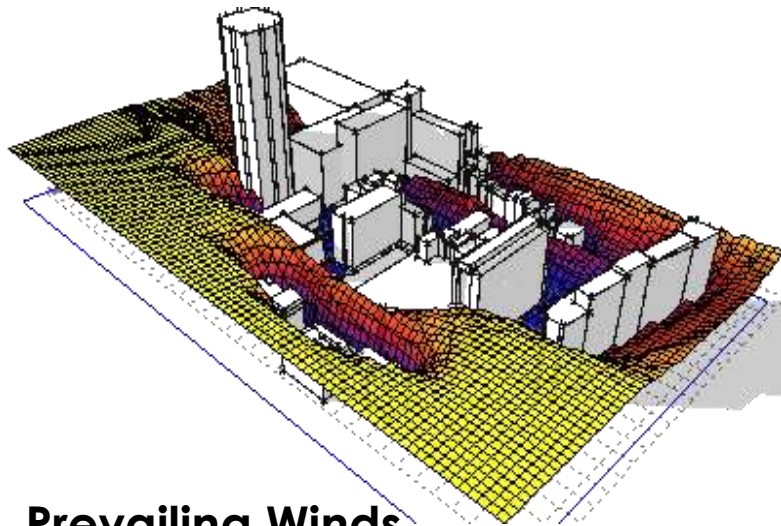
GIS Based 3D Web Scene



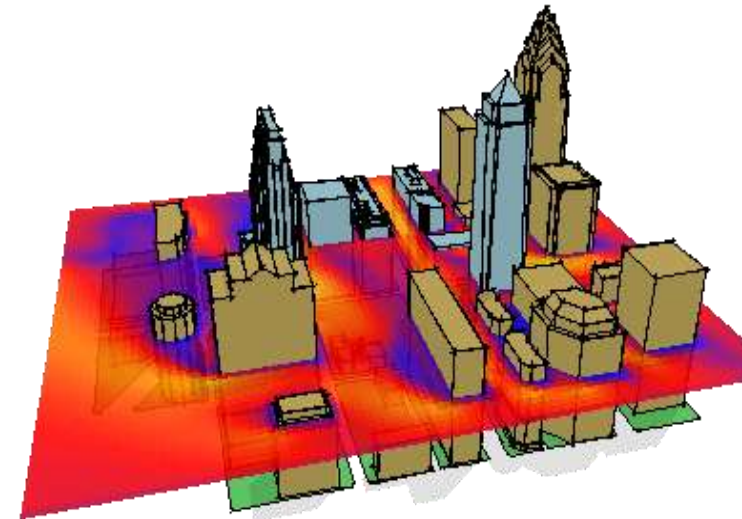
Air Flow



Shadow Analysis



Prevailing Winds

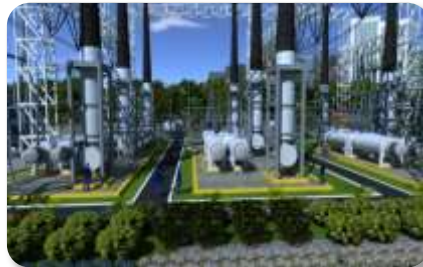
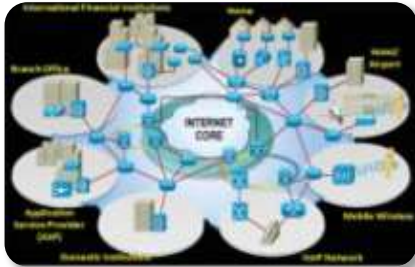


Solar Radiation

- The implementation of an organization-wide GIS have provided GIFT City with its own powerful set of tools capable of supporting comprehensive planning and management.
- A fully functioning and well maintained GIS allows for the development, maintenance and sharing of consistent and accurate data among all the stake holders.
- It also provides the ability to integrate multiple data sources for analysis and provides GIFT City with a management and planning tool for sustainable and smart growth.
- [Live GIS Analysis in GIFT City](#)

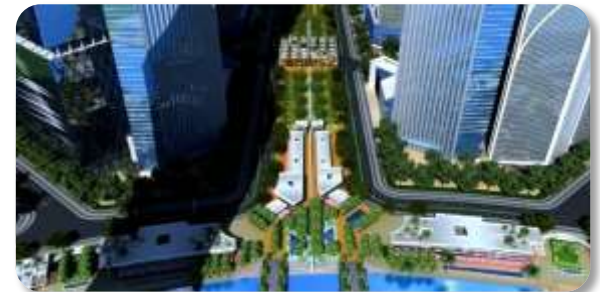
- **110 Buildings**
- 2 Landmark Buildings (Height- above 350 mt)
- 19 Buildings (Height- 150 mt to 300 mt)
- 73 Buildings (Height- 100 mt to 140 mt)
- 2 Schools – International and Domestic Board
- 200 - 300 Beds Hospital
- Hotels (5000 rooms)

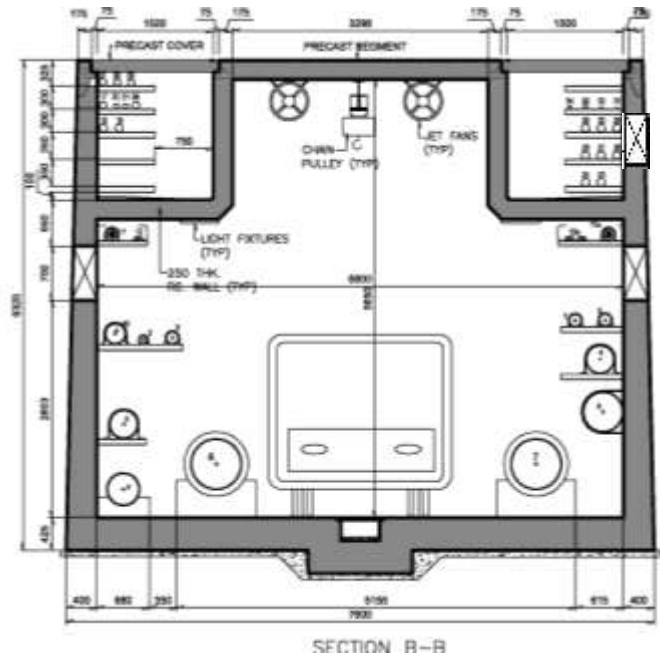
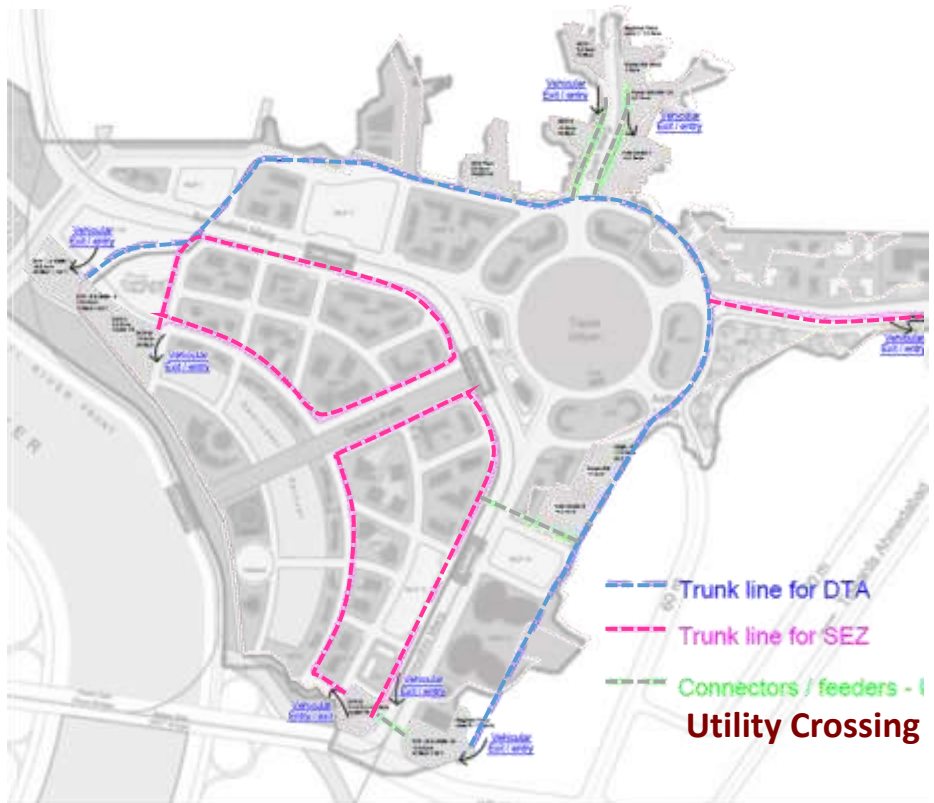
- Integrated infrastructure for better diversity
- Smart Technology ensuring energy conservation
- All utilities /services to be coordinated through single agency



INFRASTRUCTURE FACILITIES/ SERVICES

- Roads and Transportation
- Water Systems
- ICT
- Power Generation and Distribution
- District Cooling System
- Domestic Gas Distribution
- Waste Management Systems
- Utility Tunnel
- Landscaping





Utility Tunnel



Automate Waste Collection System

Reliability – **99.999%** which means outage of 5.3 minutes/annum

- **Underground cabling for power distribution within GIFT**
- **Substation and Distribution Automation**
- **Indoor Substation**
 1. Gas Insulated Switchgears(GIS) substation for sub-transmission and distribution within GIFT
 2. Compact substation (CSS) in building
- **Total Power Requirement- 750 MVA (from dual source)**
- **Emergency Power generation (Gas Based) - 200 MW**
- **Green Power**



Power Control Centre

- Power supply monitoring
- Power loss minimization
- Grievance redressal system
- Power consumption and efficiency monitoring
- Emergency Power supply monitoring



Total Cooling Load - 2,70,000 TR

- Efficiency through economies of scale
- Reduces energy costs
- Reduces maintenance costs
- Improves air quality and temperature control
- Reduces noise and vibration
- Conventional AC System not required

DCS Control Centre- Smart Infrastructure

- Monitoring District Cooling Plant System
- Simulation of cooling/energy requirements
- Analyze interface with distribution/usage for both the supply and return elements
- Evaluation of extensive economic scenarios
- Safety Management, Emergency response



District Cooling System



Drink from Any Tap

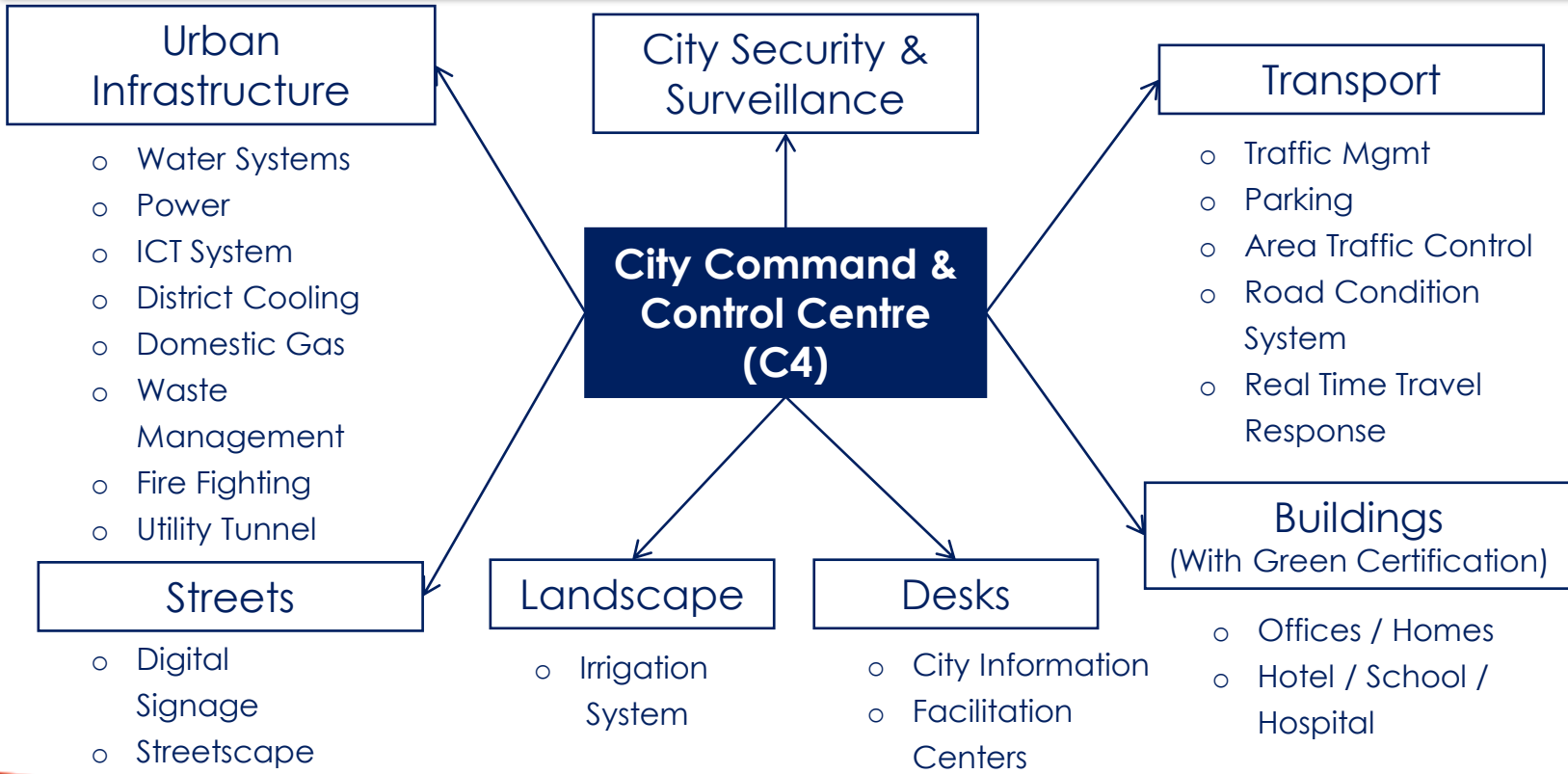
- Quality Water- can be drunk from any tap
- Storage of surface run-off & rain water
- Approach towards making the project water neutral

SMART Water Infrastructure
Utility Monitoring

Metering

Leak Detection

Controllers



City Level Landscape Masterplaning





India INX Inauguration By Prime Minister
January 9, 2017



Multi Commodity Exchange - Inauguration
January 2017



Top Relationships -Siemens

Roll-Out of “GOLDEN MILE” Services in GIFT City has started

Personally monitored by John Chambers



Prime Minister's advise – To make GIFT Smartest City of India



Top Relationships -CISCO



- ✓ Employment of more than 5000 generated
- ✓ Employment expected by 2018 – around 10,000
- ✓ Total Employment expected 1 mn direct and indirect.

- ✓ IBU's business in IFSC crossed US\$ 2.5 billion
- ✓ More than 100 institutions operational
- ✓ Investment of more than **US\$ 300 Mn (Around INR 2000 Cr.)** made
- ✓ Committed investment of more than US\$ 1700 Mn. (over INR 10,000 Cr.)

- ✓ International Exchange of BSE inaugurated by Hon'ble Prime Minister of India on Jan 9, 2017
- ✓ SEBI has included "Derivatives of Equity Shares of a company incorporated in India" as a part of Permissible Securities under SEBI (IFSC) Guidelines, 2015.
- ✓ SEBI permitted the trading of Gold, Silver and Copper at GIFT IFSC.

- ✓ Development Commissioner approval received.
- ✓ SEBI in-principle approval received.
- ✓ Exchange is operational from May' 2017.

- ✓ MCX expanded their operations at GIFT City, Have operationalised their Business Continuity (BC) and Disaster Recovery (DR) Centre
- ✓ Centre in GIFT City will also have training centre and in-house software development division



- ✓ Started its centralized back office (24X7) operations at GIFT.
- ✓ Employment of around 1500.



- ✓ Declared as 4th Development Centre in India & 10th in the World
- ✓ Expansion announced in Jan 2017.
- ✓ Expected employment of more than 300.



- ✓ More than 1,000 People.
- ✓ Expected to initiate operations at GIFT by August' 2017.



- ✓ Committed more than 0.5 mn sq ft of office space.
- ✓ Would set up their Corporate office, Back office operations and data centre.
- ✓ Operations to commence shortly
- ✓ Expected employment of more than 3000



- ✓ Expanded footprint by taking up additional development of 0.5 mn sq ft of BUA
- ✓ Developing around 1 mn sq ft of state of the art office towers.
- ✓ Total investment of around INR 500 Cr.



**Opportunities for
Legal & Audit Firms**

- ✓ This will be the big enabler for the legal and accounting firms to expand their services in Multi Services SEZ with IFSC and thereby exporting their services to various global players
- ✓ Various fiscal incentives to the legal and accounting firms under SEZ norms.



GUJARAT INTERNATIONAL
FINANCE TEC-CITY

www.giftgujarat.in

Thank You