



Geospatial Enabling Combat – Putrajaya

ALEX TAN, REGIONAL SALES MANGER

AUGUST 2017

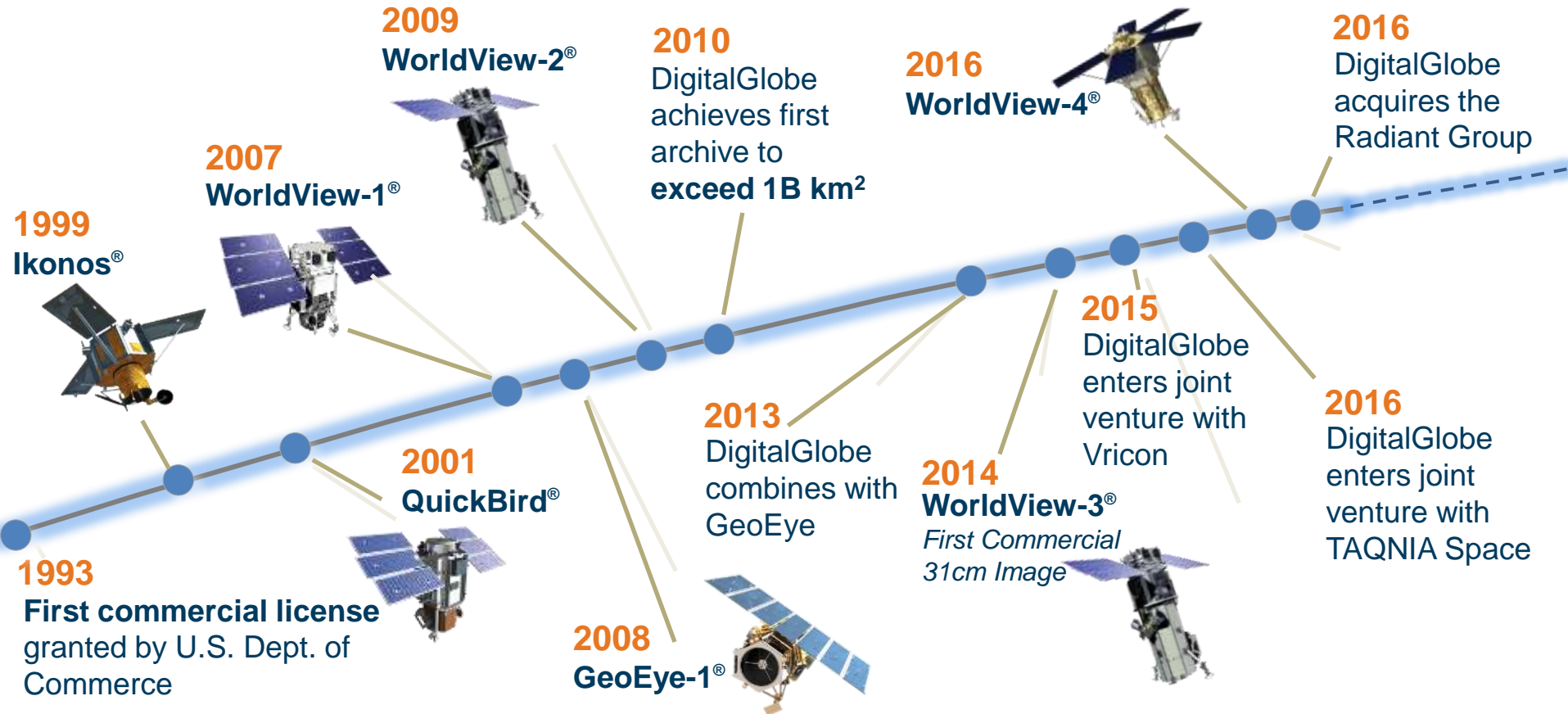
DigitalGlobe is the world's leading provider of high-resolution Earth imagery, data and analysis



In a rapidly changing world, the most innovative companies and more than 40 governments trust DigitalGlobe for mission-critical Earth information and imagery.

We are the industry pioneer

And we continue to drive the state of the art



We doubled our 31cm capacity with WorldView-4...



Successful launch 11 November, 2016



Now on orbit and fully operational

...And built the world's best commercial constellation

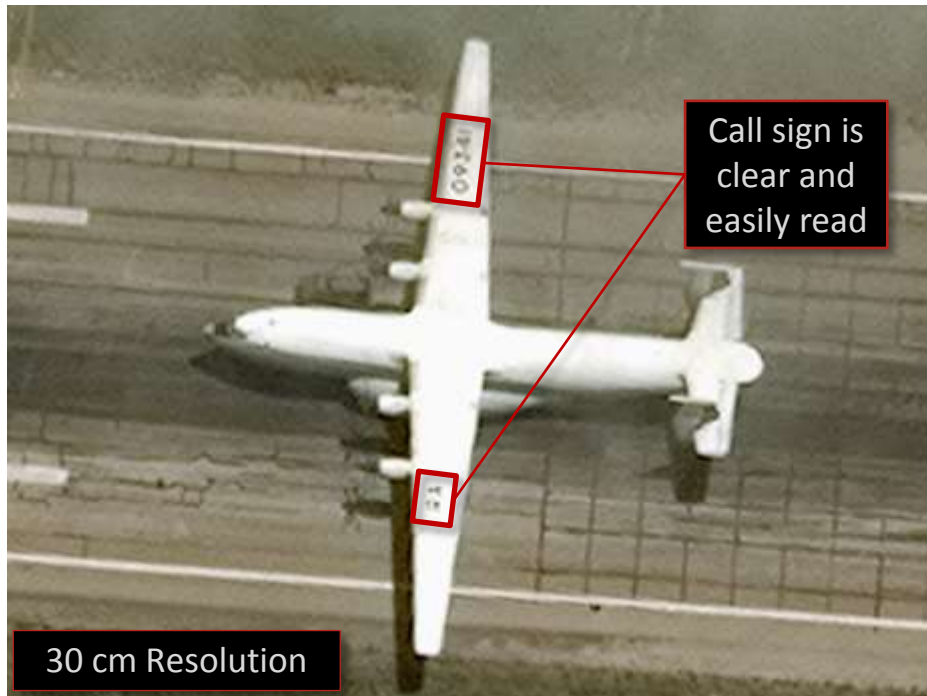


On Orbit

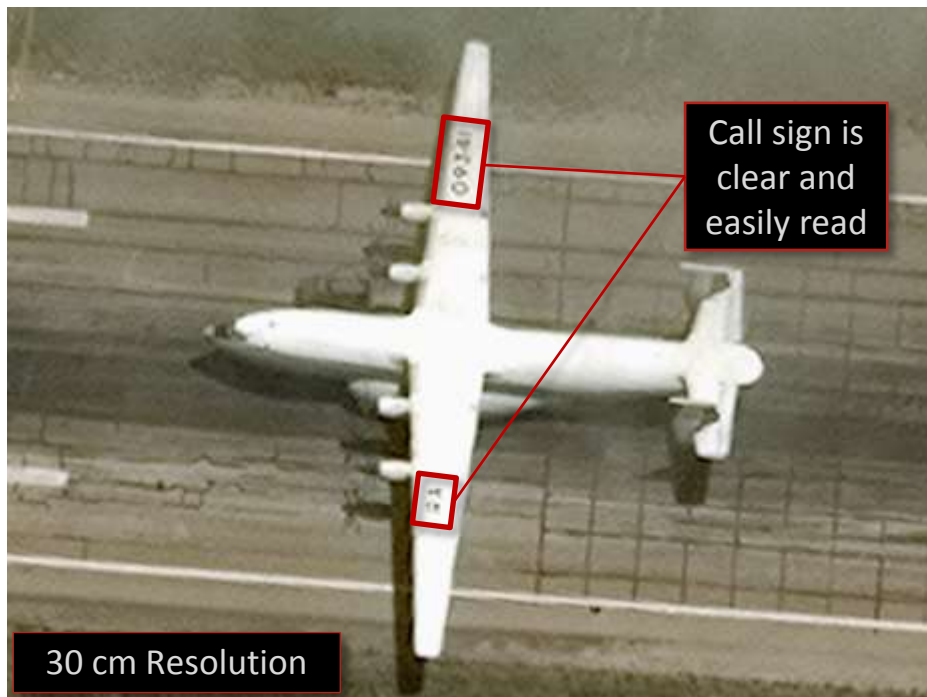
Archive

1. Ground Sample Distance, a common measure of spatial resolution; 2. Circular Error 90%, a measure in meters of the native spatial accuracy of the satellite

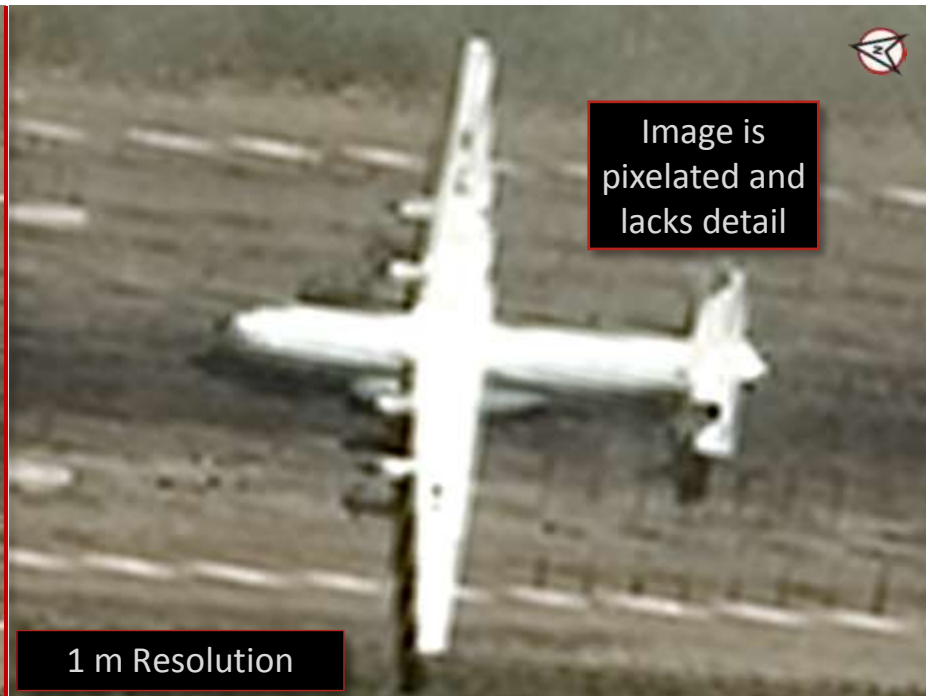
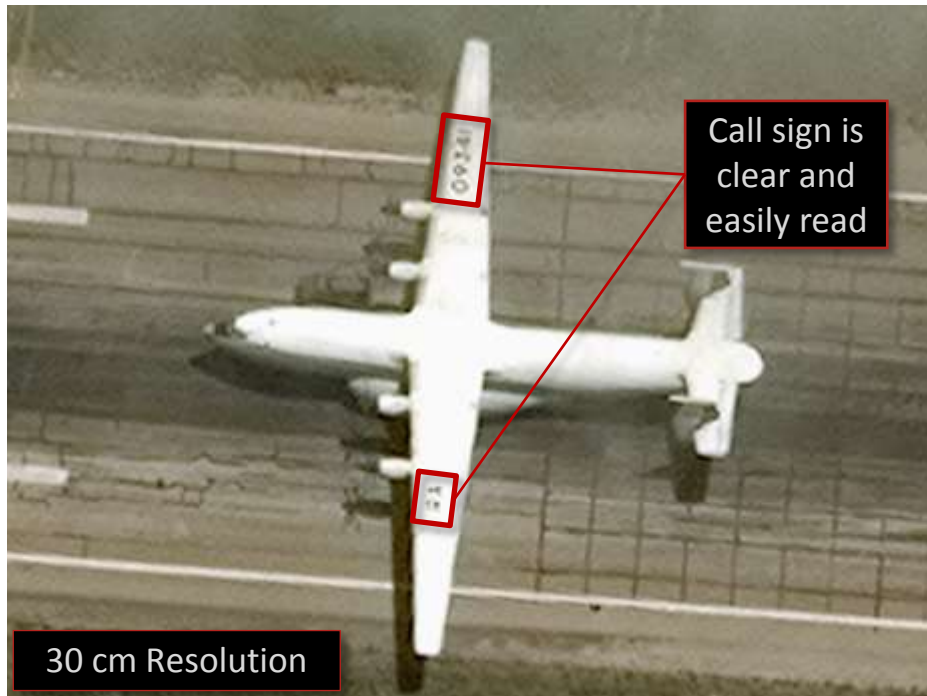
True native resolution matters (1/3)



True native resolution matters (2/3)



True native resolution matters (3/3)





Recent WorldView-4 Imagery



**Buturlinovka
Air Base**

**Sohae Satellite
Launching Station**

Black Sea

*Arabian
Sea*

Bay of Bengal



Launch Pad

Mobile Service Tower

Railway Directed Underground



Horizontal
Processing Facility

Train Station

Possible Command
and Control Center



Air Warning / Early
Warning Radar
Facility

BACK TRAP early
warning radar

SIDE Net height finding
radar

BAR LOCK (P-35) early
warning radar

Su-34
Fullback fighter-
bombers

Canards visible

Covers over the
cockpit

Distinctive "stinger" tail
boom

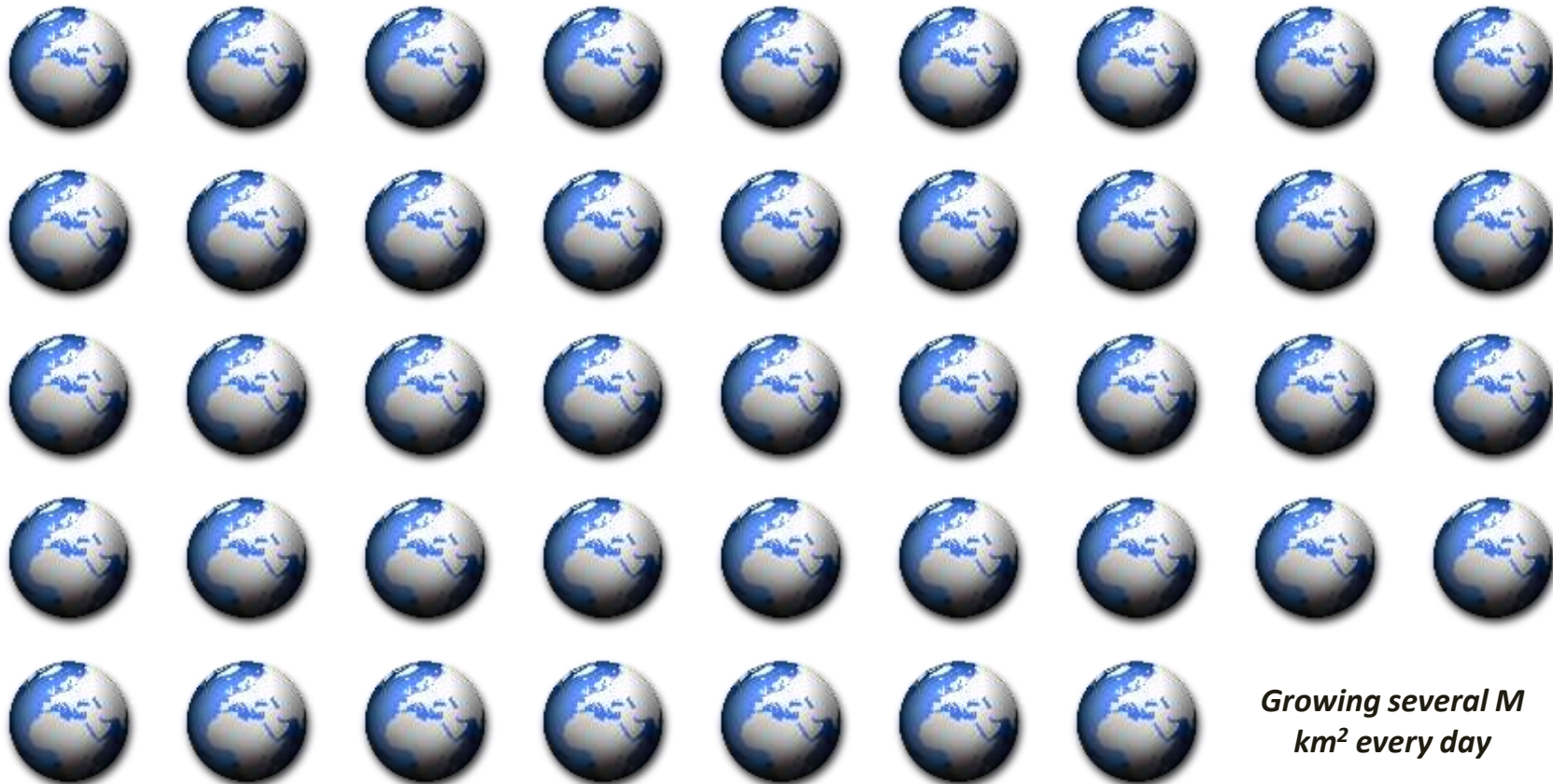
Nose gear
visible



Creator of world's largest high-resolution archive



43 times the earth's landmass – and counting



*Growing several M
km² every day*



- 2016 acquisition of Radiant Group broadens our analytic capabilities
 - Radiant is a unique and highly capable supplier of services to the US Government
 - DigitalGlobe now provides a **full range of GEOINT services and capabilities** to the US DoD and International D&I Partners
-
- **Human Landscape**
 - **Crowdsourcing**
 - **Marine Services**
 - **Analysis Reports**
 - **Analytic Services**
 - **Software Solutions**
 - **Data Science**
 - **Big Data Analytics**
 - **Space and Airborne Systems**
 - **Advanced Tradecraft Training**

We will continue to deliver the industry's best imagery capabilities to ensure your mission success

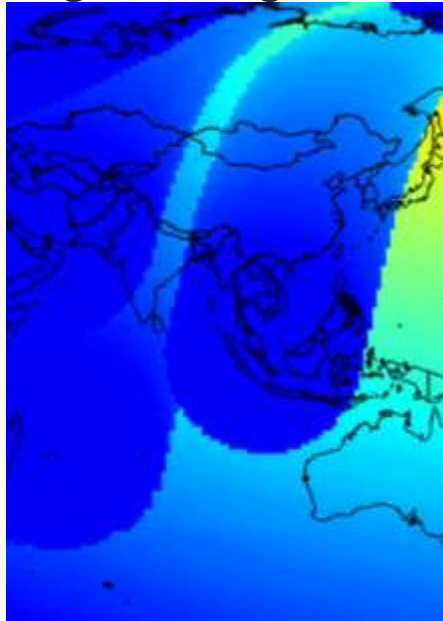


Highest-resolution constellation



*Two 50-cm class
One 40-cm class
Two 30-cm class*

Fast, global ground segment



*45% of land: real-time
95% of land: <20 mins
Unrivaled processing scale*

Largest high-resolution archive



*>5B km²
40x earth landmass
15 years deep*

Rich product suite



Direct access, cloud services, elevation, analytics, and more

We offer a full spectrum of geospatial capabilities to support your mission needs (1/3)



Direct Access Program



Access to the Industry Leading Constellation

SecureWatch™



Online Access to our Daily Take and Archive

Elevation Data Suite

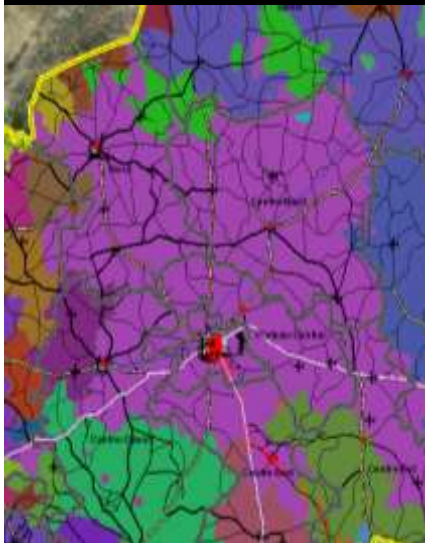


Industry-best Elevation Package

We offer a full spectrum of geospatial capabilities to support your mission needs (2/3)



Human Landscape



Rich Stack of
Geointelligence

Image Analysis Reports



Mission-critical Insights
Delivered Quickly

Mosaics



Large-area Images with
Uniform Characteristics

We offer a full spectrum of geospatial capabilities to support your mission needs (3/3)

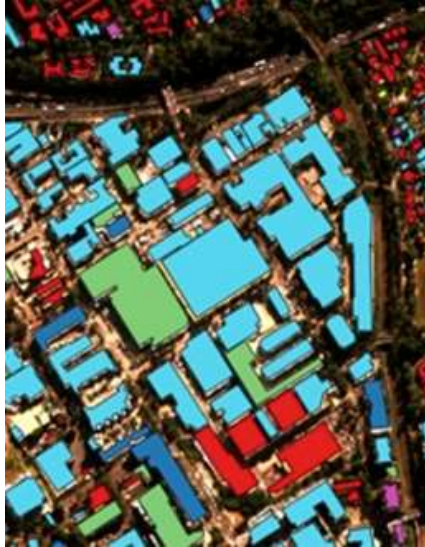


Multi-Spectral Imagery



Improved Feature Identification and Extraction

Big Data



Machine-driven Imagery Exploitation

Training Solutions



Equipping You to be the Expert

Rapid Access Program



Online control of Industry's best constellation



SecureWatch

SecureWatch



1:14




- Largest high-res archive:** 94+PB – 43x the earth's landmass
- Freshest imagery:** 1.3 M km² new collects daily
- Highest resolution:** 30 cm+, the industry's best
- Easy:** simple and powerful web browser interface
- Indispensable:** enables wide range of use cases
- Integrated:** seamless interoperability with GIS tools
- Affordable:** options for every budget

On-demand access to complete DigitalGlobe archive

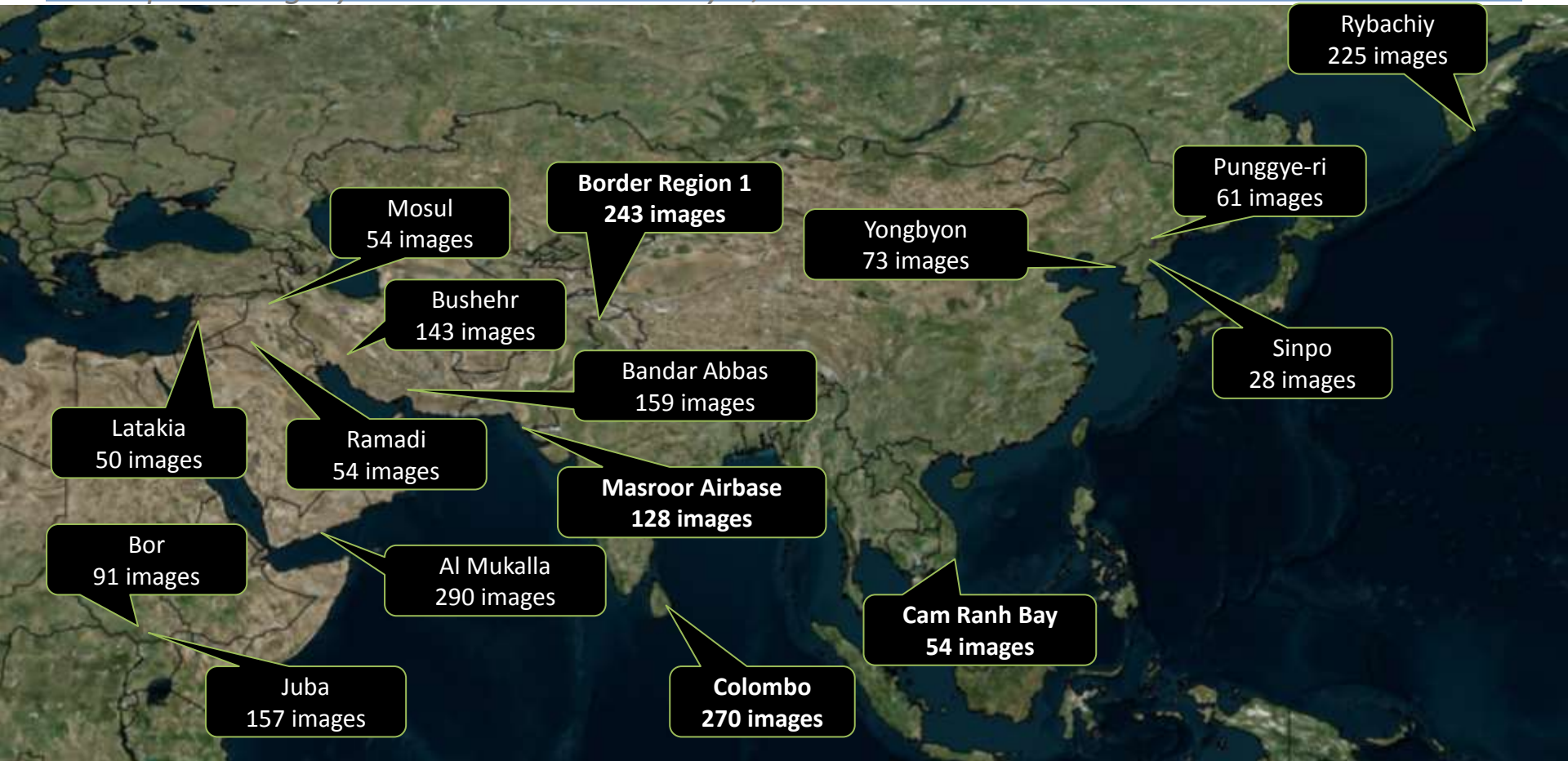


A screenshot of the DigitalGlobe web interface. The main area shows a world map with satellite imagery. The map is mostly dark blue, with landmasses appearing in shades of orange and green. The interface includes a search bar at the top left, navigation controls on the left side, and a scale bar at the bottom left. A text box at the bottom left contains the text "30 days of new imagery" followed by an orange square icon. The top right corner has a "SecureWatch Demo" button. The bottom right corner has a small inset map and a "Help, Data, Terms of Use" link.

30 days of new imagery 

Hundreds of images for key locations around globe

Example: imagery collected since January 1, 2014



Indispensable: enables a wide range of use-cases

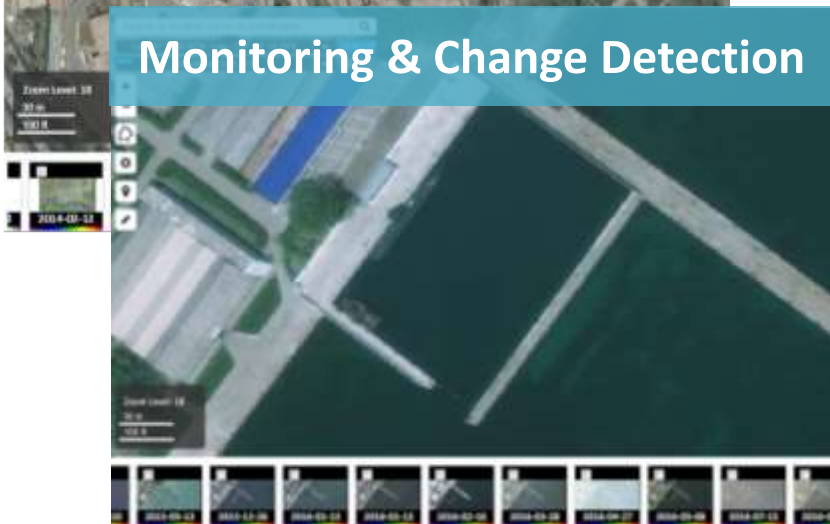
Putting the power of our imagery in your hands



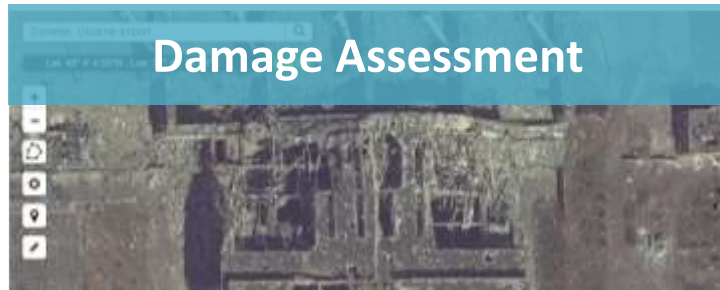
Mission Planning



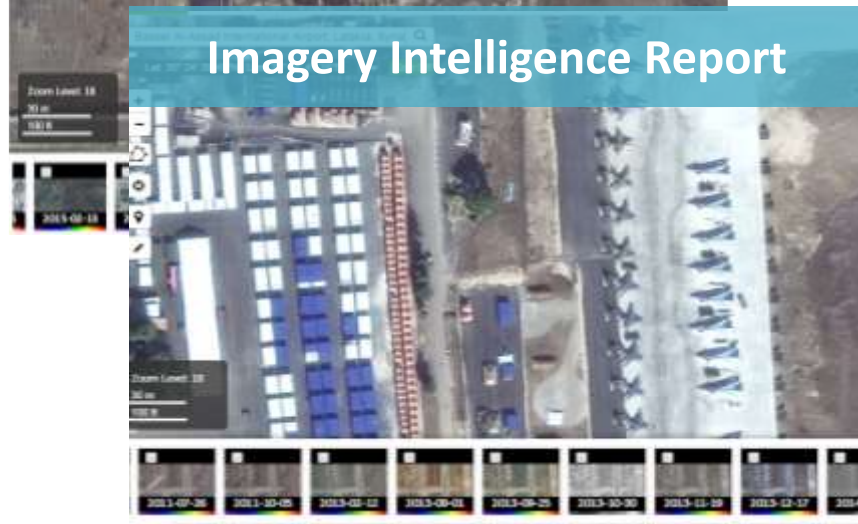
Monitoring & Change Detection



Damage Assessment



Imagery Intelligence Report



Integrated: seamlessly works with geospatial tools

Plug and play with all OGC/REST web service enabled tools



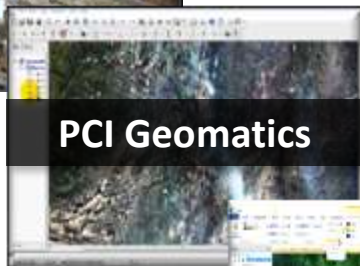
Google Earth



RemoteView



ESRI ArcGIS



PCI Geomatics



BAE SocetGXP



ERDAS IMAGINE



ENVI



ERDAS APOLLO

We are building capabilities into SecureWatch to serve a range of customer missions...



Mission Planning

**Battle Damage
Assessment**

Target Monitoring

Border Monitoring

**Non-proliferation
Monitoring**

**Maritime Domain
Awareness**

...others to come

Rich stack of GEOINT with DG imagery as foundation



Mission Planning

**Battle Damage
Assessment**

Target Monitoring

Border Monitoring

**Non-proliferation
Monitoring**

**Maritime Domain
Awareness**

...others to come



DigitalGlobe Imagery

3rd Party Imagery

SAR

Open GIS Layers

News

Social Media

Military Facilities

AIS (Ship Tracking)

ADS (Aircraft Tracking)

Weather

...others to come

Our Content strategy for SecureWatch



	DG Imagery	3rd Party Imagery	SAR	Open GIS Layers	News	Social Media	Military Facilities	AIS	ADS	Weather
Mission Planning	✓	✓	✓	✓		✓	✓	✓	✓	✓
Battle Damage Assessment	✓		✓							
Target Monitoring	✓	✓	✓		✓	✓	✓			✓
Border Monitoring	✓	✓								
Non-prolif Monitoring	✓	✓			✓	✓	✓			
Maritime Domain Awareness	✓	✓	✓	✓				✓		✓



The industry's best commercial satellite imagery...

As foundation for gold standard elevation data...

Enriched with rich, reliable stack of human landscape layers...

Delivered through our simple and secure cloud service SecureWatch™

Enabled by geospatial training with DigitalGlobe experts.

**We are eager to earn the right to become your trusted
geointelligence mission partner**

