

Development of Geospatial Information in Indonesia: Progress & Challenge

Dr. Nurwadjedi Sarbini

Deputy of Thematic Geospatial Information
Geospatial Information Agency (BIG)



Geosmart Asia, September 29 – October 1, 2015
Putra World Trade Center, Kuala Lumpur



Progress

- Regulation
- Coordination
- Production
- Distribution
- Usage

Progress

Regulation

- Law No. 4/2011: Geospatial information
- Law No. 26/2007: Spatial planning
- Law No. 1/2014: Management of coastal and small island
- Presidential Regulation No. 27/2014 : National Geospatial Information Network
- Presidential Instruction No. 6/2013: Suspension on new permit and improving forest governance of primary forest and peatland
- Presidential Instruction 6/2012: Management of high resolution satellite imagery
- Presidential Regulation: Acceleration of onemap policy implementation *[draft]*

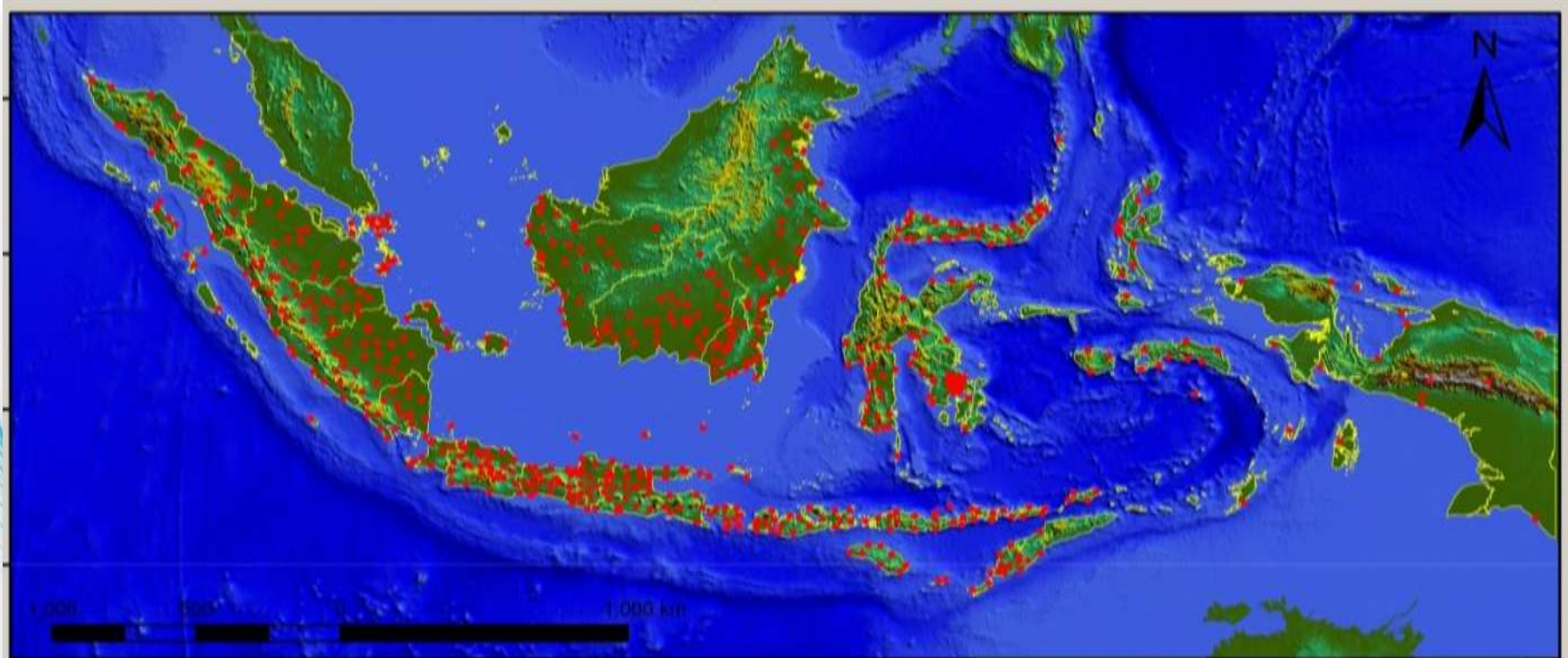
Coordination

- Updating members of thematic geospatial information working groups
- Technical meeting: focusing on the development of large scale standard mapping
- Regional meeting: supporting and supervising provincial & district governments to develop network nodes which are integrated with the NSDI Network in BIG
- National meeting: developing onemap and standard mapping for thematic maps related with the detail spatial planning, rural development, disaster management, food security, maritime development, and climate change

Progress

Production

- National geodetic reference system



Progress

Production

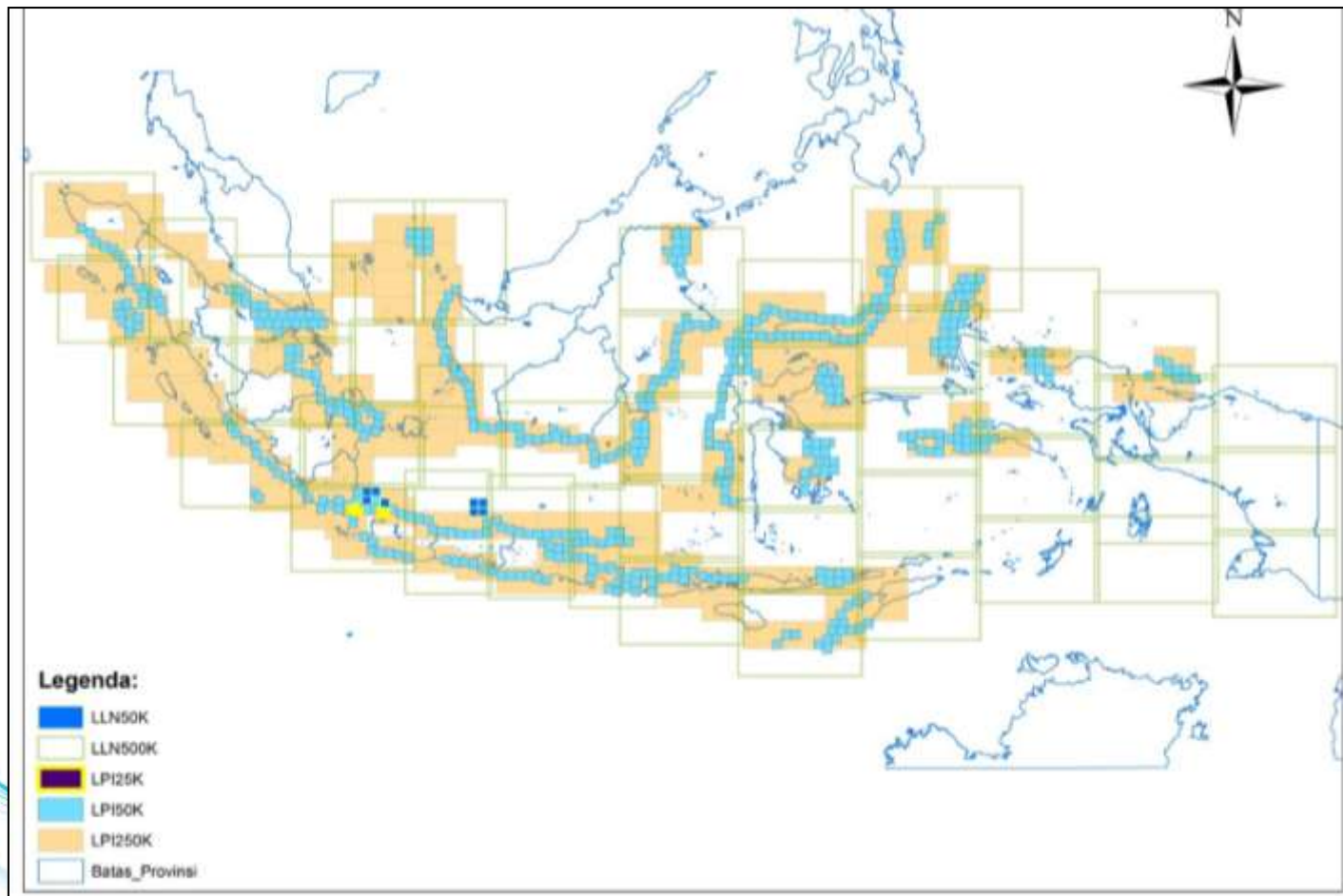
- Topographic basemaps: 1:10.000, 1:25.000, 1:50.000, 1:250.000



Progress

Production

- Marine and coastal basemaps: 1:25.000, 1:50.000, 1:250.000



Achievements



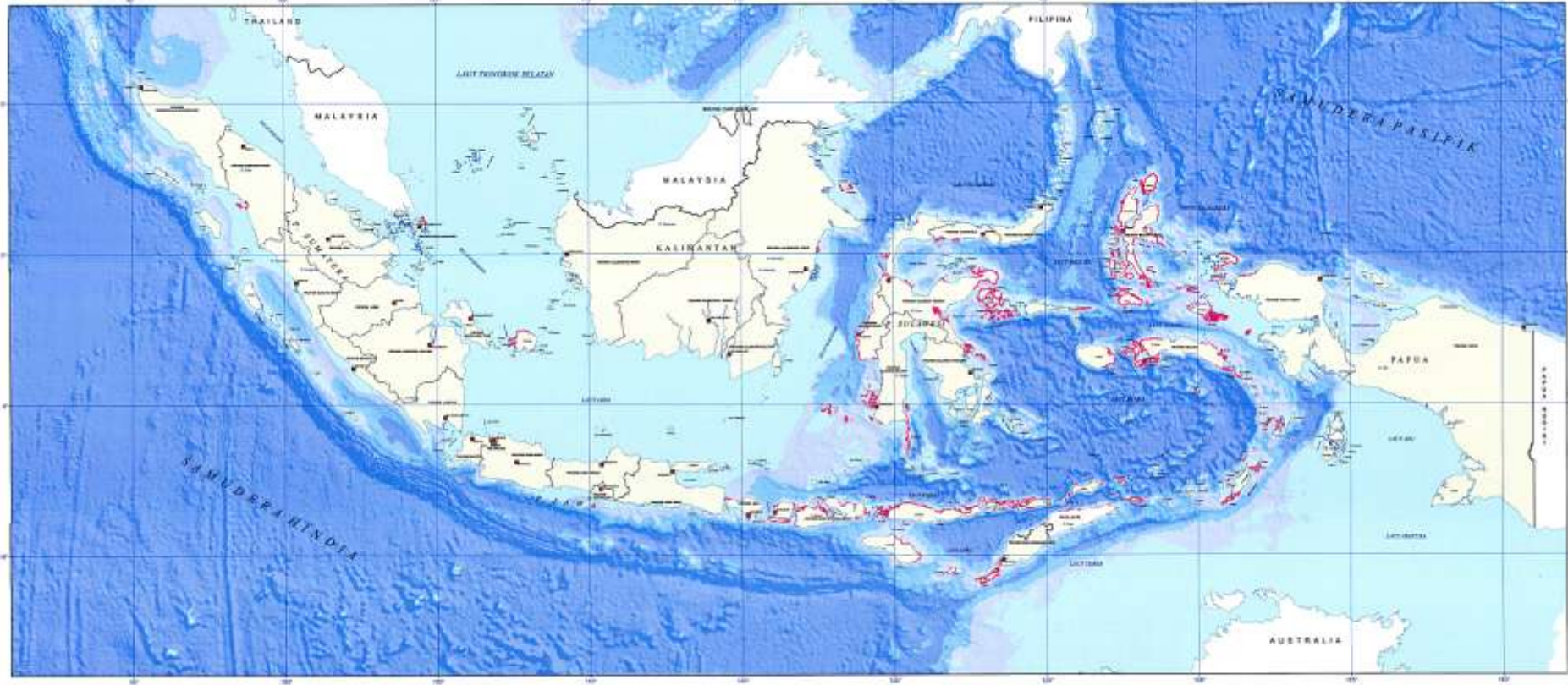
Achievements

SATU PETA MANGROVE NASIONAL



Achievements

SATU PETA HABITAT LAMUN NASIONAL



SKALA 1 : 500.000

LEGENDA

SEYERANJAN :

- BAWA KAWAN
- BUNYUT/BERANGKAS
- ▲ KOTILAN
- GARA GARA BUNYAN
- GARA GARA PROSEK
- ASIN BERING
- SALAM TIDAK TERPAPAR

SEYERANJAN :

- BUKIT BERING
- BERING
- BERING TIDAK TERPAPAR

AREAL LAMUN :

- HABITAT LAMUN

REVISI

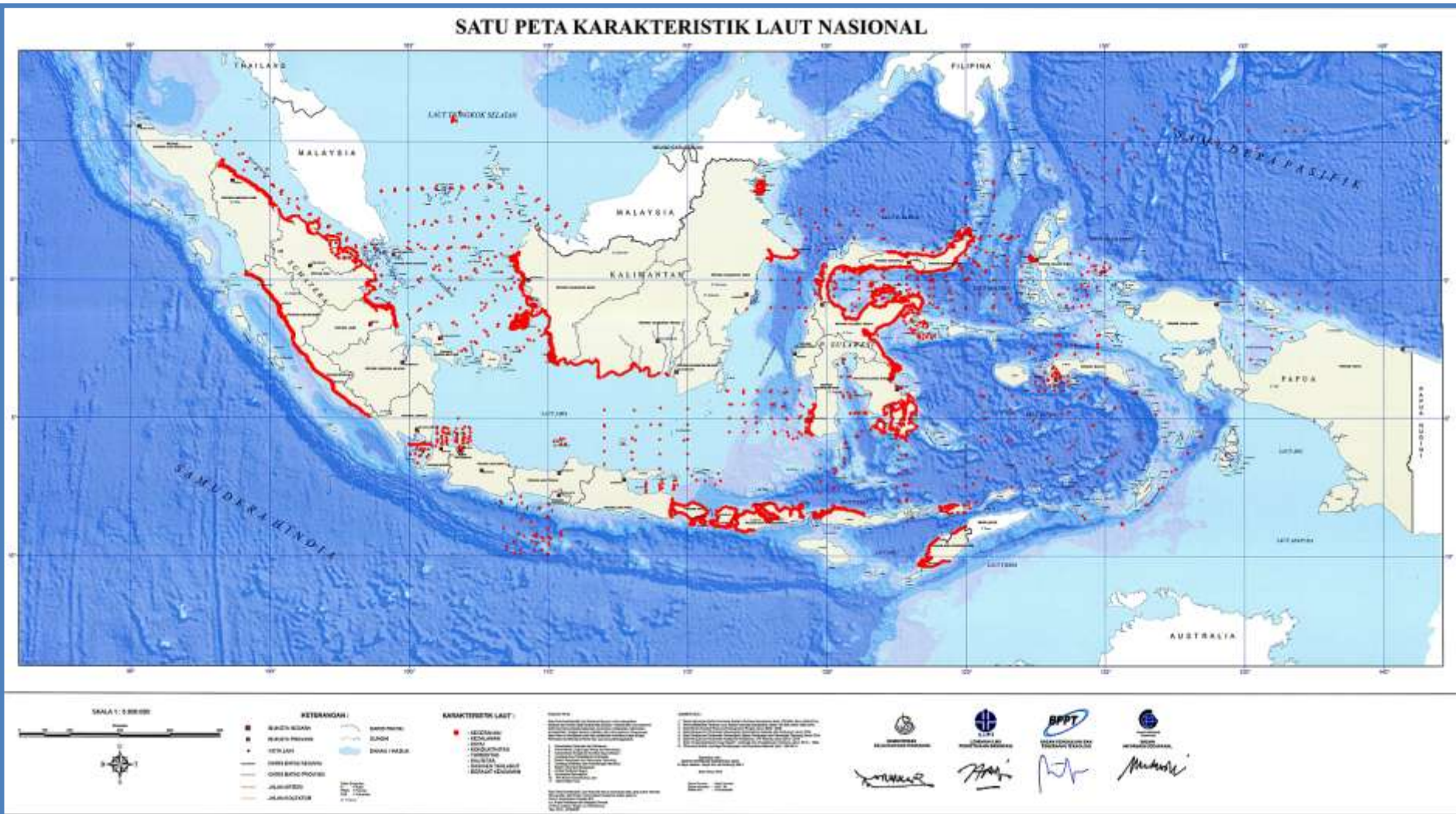
LOGO PARTNER:

- Logo of the Ministry of Marine Affairs and Fisheries
- Logo of the Ministry of Environment, Forestry and Climate Change
- Logo of the Ministry of Natural Resources and Environmental Conservation
- Logo of the Ministry of Agriculture, Forestry and Fisheries
- Logo of the Ministry of Energy and Mineral Resources
- Logo of the Ministry of Health
- Logo of the Ministry of Education, Culture, Religion and Higher Education
- Logo of the Ministry of Transportation
- Logo of the Ministry of Tourism and Creative Economy
- Logo of the Ministry of Defense
- Logo of the Ministry of Justice
- Logo of the Ministry of Law and Human Rights
- Logo of the Ministry of Social Justice and Human Development
- Logo of the Ministry of Communication and Informatics
- Logo of the Ministry of Planning
- Logo of the Ministry of Finance
- Logo of the Ministry of Economic Affairs
- Logo of the Ministry of Industry, Trade and Cooperatives
- Logo of the Ministry of Labor
- Logo of the Ministry of Health
- Logo of the Ministry of Education, Culture, Religion and Higher Education
- Logo of the Ministry of Transportation
- Logo of the Ministry of Tourism and Creative Economy
- Logo of the Ministry of Defense
- Logo of the Ministry of Justice
- Logo of the Ministry of Law and Human Rights
- Logo of the Ministry of Social Justice and Human Development
- Logo of the Ministry of Communication and Informatics
- Logo of the Ministry of Planning
- Logo of the Ministry of Finance
- Logo of the Ministry of Economic Affairs
- Logo of the Ministry of Industry, Trade and Cooperatives
- Logo of the Ministry of Labor

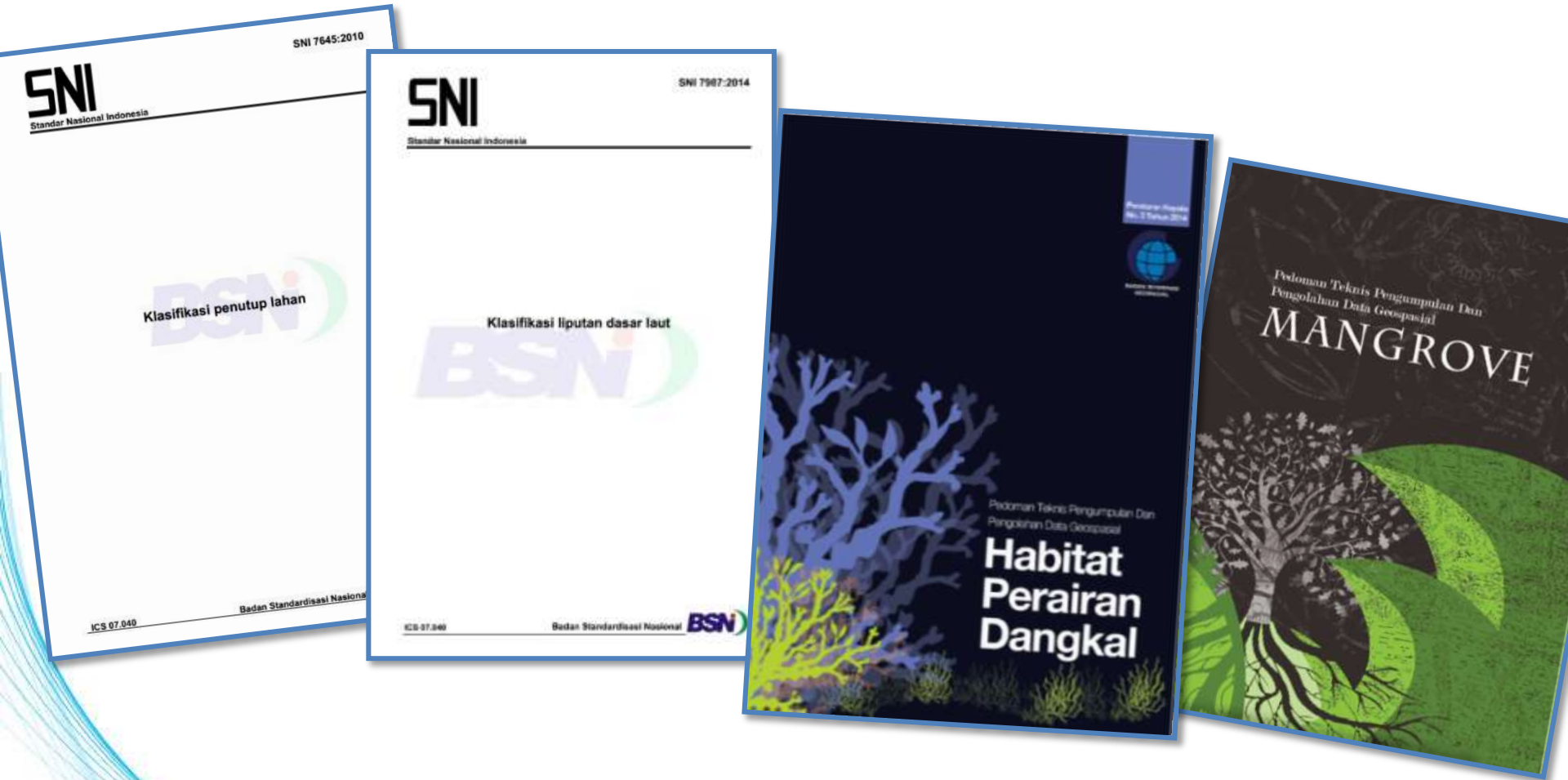
THE NATURE CONSERVANCY

SDP TOLAK

Achievements

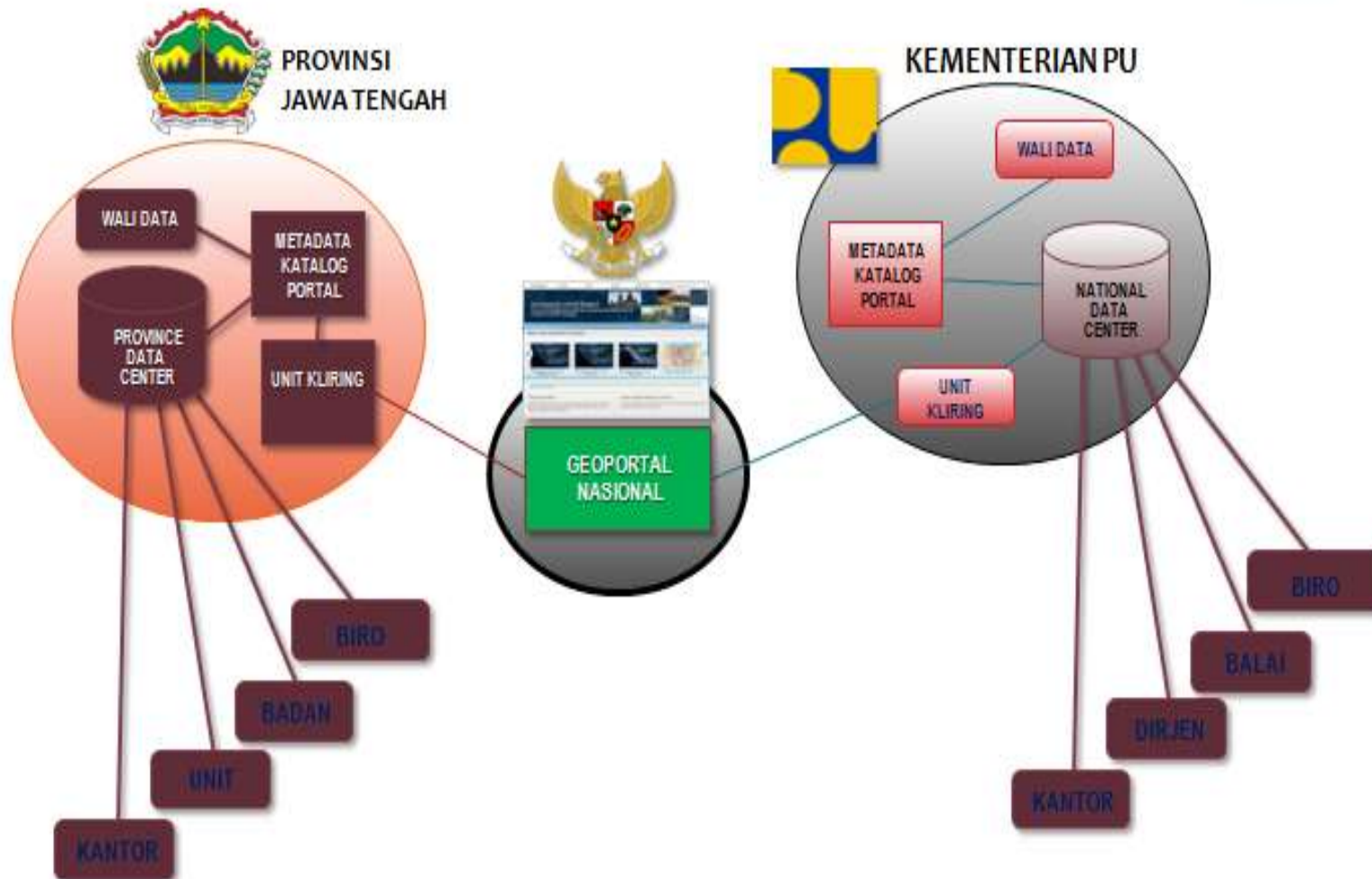


Achievements



Progress

NSDI Network (Ina-Geoportal)



Progress

Distribution

- National geoportal for data sharing
- Participatory mapping for data updating



Network Nodes

	TARGET	CONNECTED	TO DO
Ministry and Agency	57	23	34
Province	34	18	16
District.	500	7	493

Progress

Usage

- Agriculture
- Mining
- Industry
- Forestry
- Transportation
- Natural Conservation
- Spatial planning
- Maritime & Fishery
- Disaster management

Challenge

Production

Distribution & usage

Human resource

Technology & industry

Challenge

Production

- The geodetic control system is not evenly distributed
- Large scale basemaps [1: 5000] and standards are required for detail spatial planning and rural development
- Not all thematic maps are integrated through one map
- Current and limited high resolution of remote sensing imageries

Distribution and Usage

- National geospatial infrastructure is not yet fully functional
- The data sharing among stakeholders is still not smooth
- Limited availability of thematic geospatial data with the scale of 1:50.000 or larger

Challenge

Human resource

- More geospatial experts are needed
- Limited number of universities on geospatial study
- Technical experts are mostly not certified
- Trained personnels are moved to another division (Administrative)

Technology and Industry

- There are more technology users than technology developers
- There is no good quality of remote sensing imageries for thematic mapping of marine resources
- Research on geospatial is not prioritized
- Limitation of the geospatial industry on trained human resource and infrastructures (updated hardware and software of geospatial)
- The association of geospatial industry is not well established
- Incentives for geospatial research and industry is not well provided

Closing Remarks

- ❖ For land resource survey and mapping, the development of geospatial data in Indonesia is being focused on large scale for detail spatial planning rural and development. For marine resource survey and mapping, good quality of remote sensing imageries are needed
- ❖ For data sharing and distribution, the network nodes of NSDI in national, province, and district levels continue to be developed
- ❖ The progress of geospatial information needs to be improved. The challenges to be overcome are in terms of production, distribution, usage, human resource, technology and industry
- ❖ The impact of geospatial information on national economy has not been studied
- ❖ The cooperation with foreign countries, especially with ASEAN countries, should be enhanced to face the challenges
- ❖ The cooperation can be in the form of ASEAN working group or network whose aim is to improve human resource capacity building and the geospatial industry in the ASEAN region

IndONEsia



BADAN INFORMASI
GEOSPASIAL

Bersama Menata Indonesia yang Lebih Baik

Integritas, Visioner, Tanggung Jawab, dan Kerja Sama



Thank you very much....

Badan Informasi Geospasial

Jl. Raya Jakarta Bogor Km.46 - Cibinong