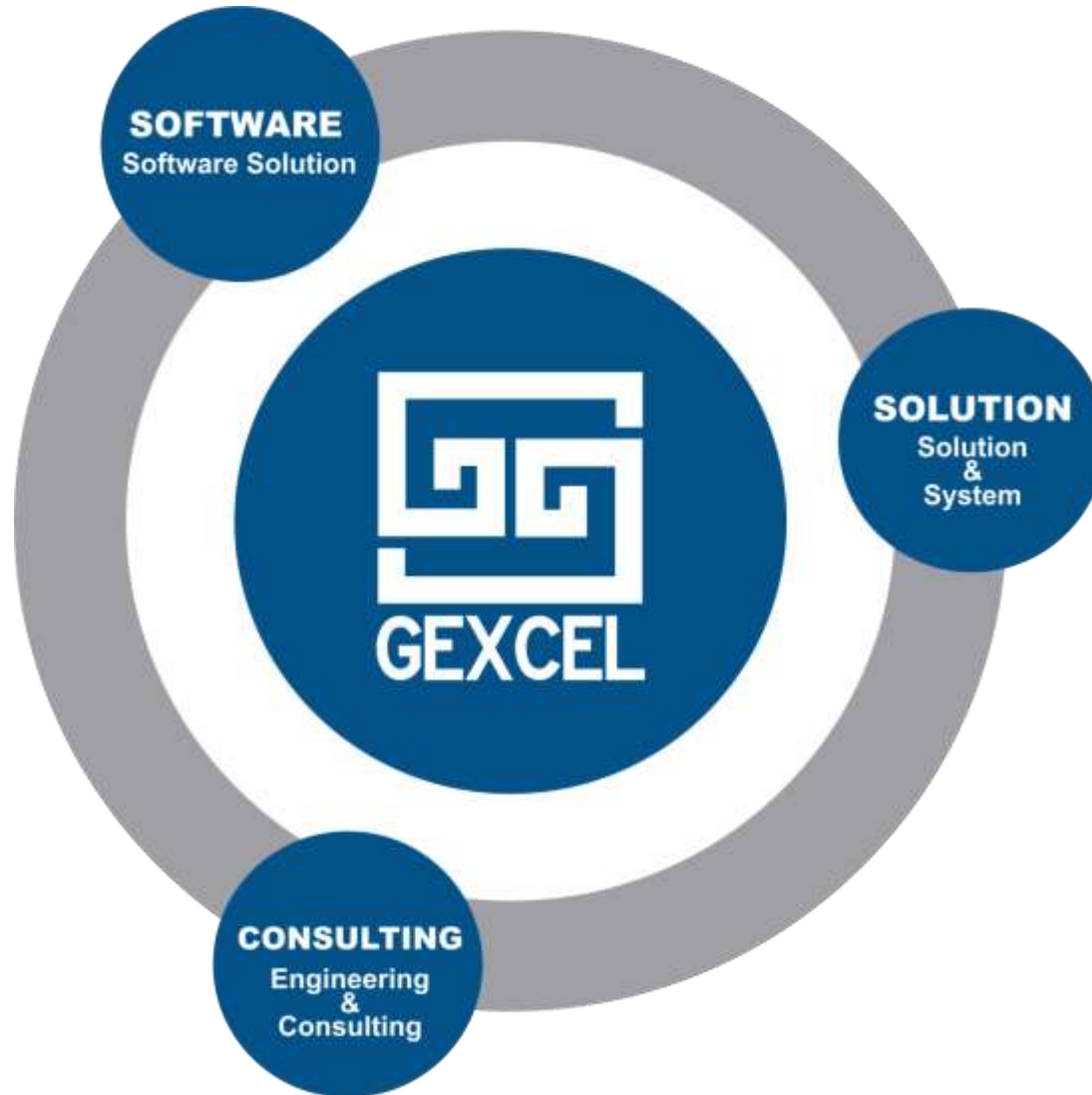


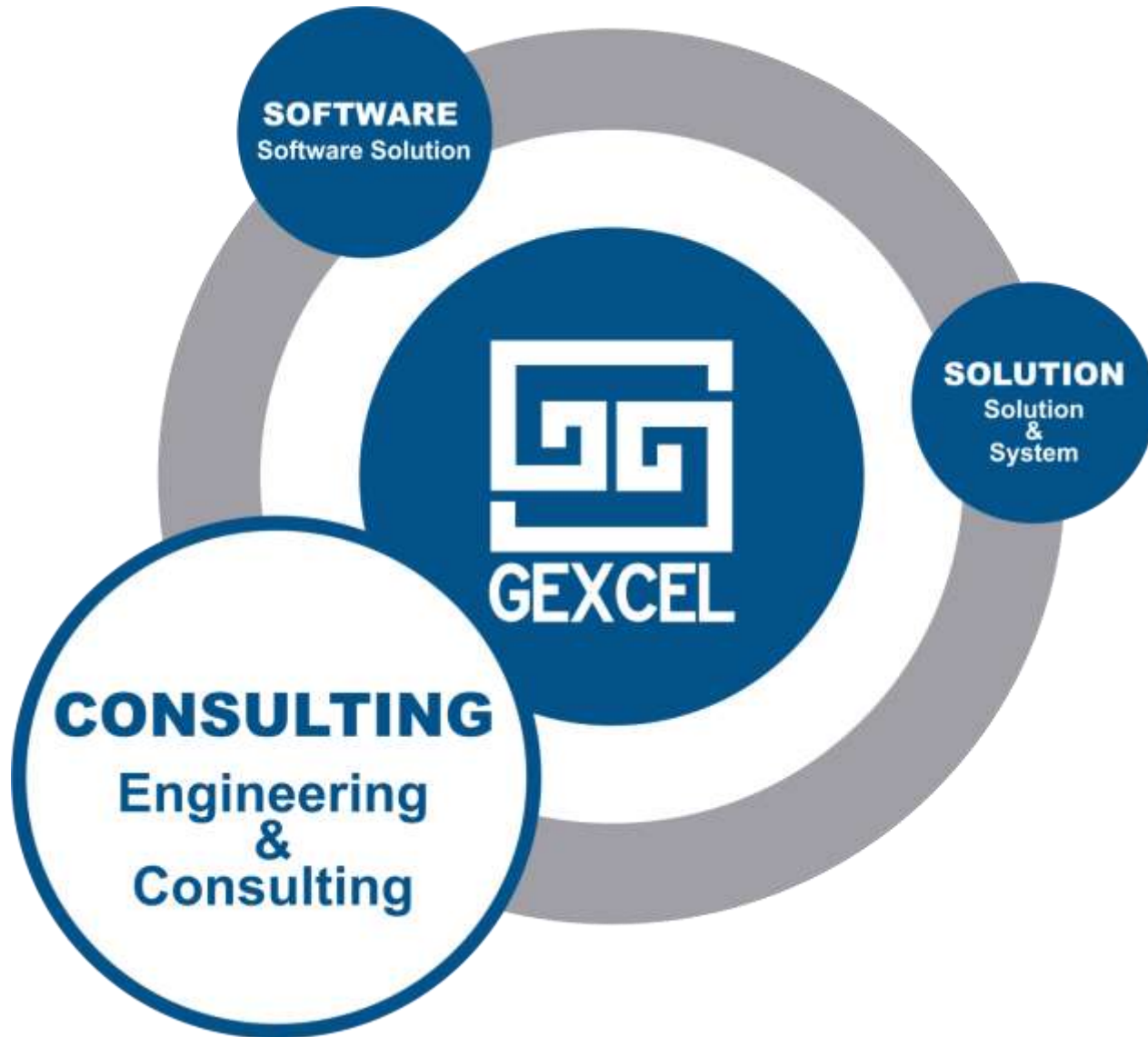
**3D Laser Scanning and BIM applied
to High Technology Construction Site:**

**The Italian Pavilion at the International
Exposition 2015 in Milan**

**arch. Giorgia Rossi
Gexcel International Sales Manager**







SOFTWARE
Software Solution

SOLUTION
Solution
&
System

CONSULTING
Engineering
&
Consulting

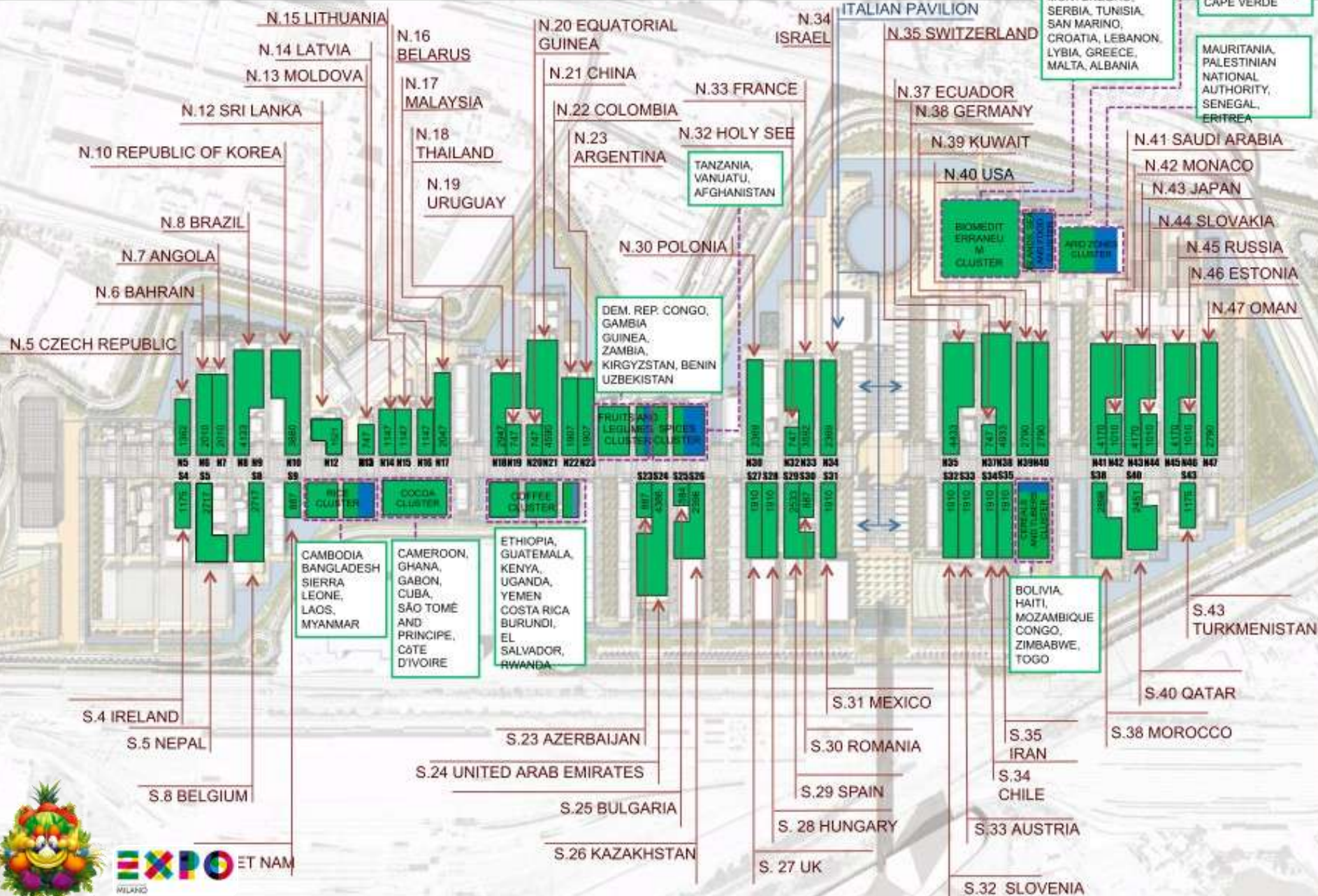


Image from: urbanfilemilano.blogspot.com





NUTRIRE IL PIANETA
ENERGIA PER LA VITA



Cascina Triulza

Thailand Pavilion

Uruguay Pavilion

Malaysia Pavilion

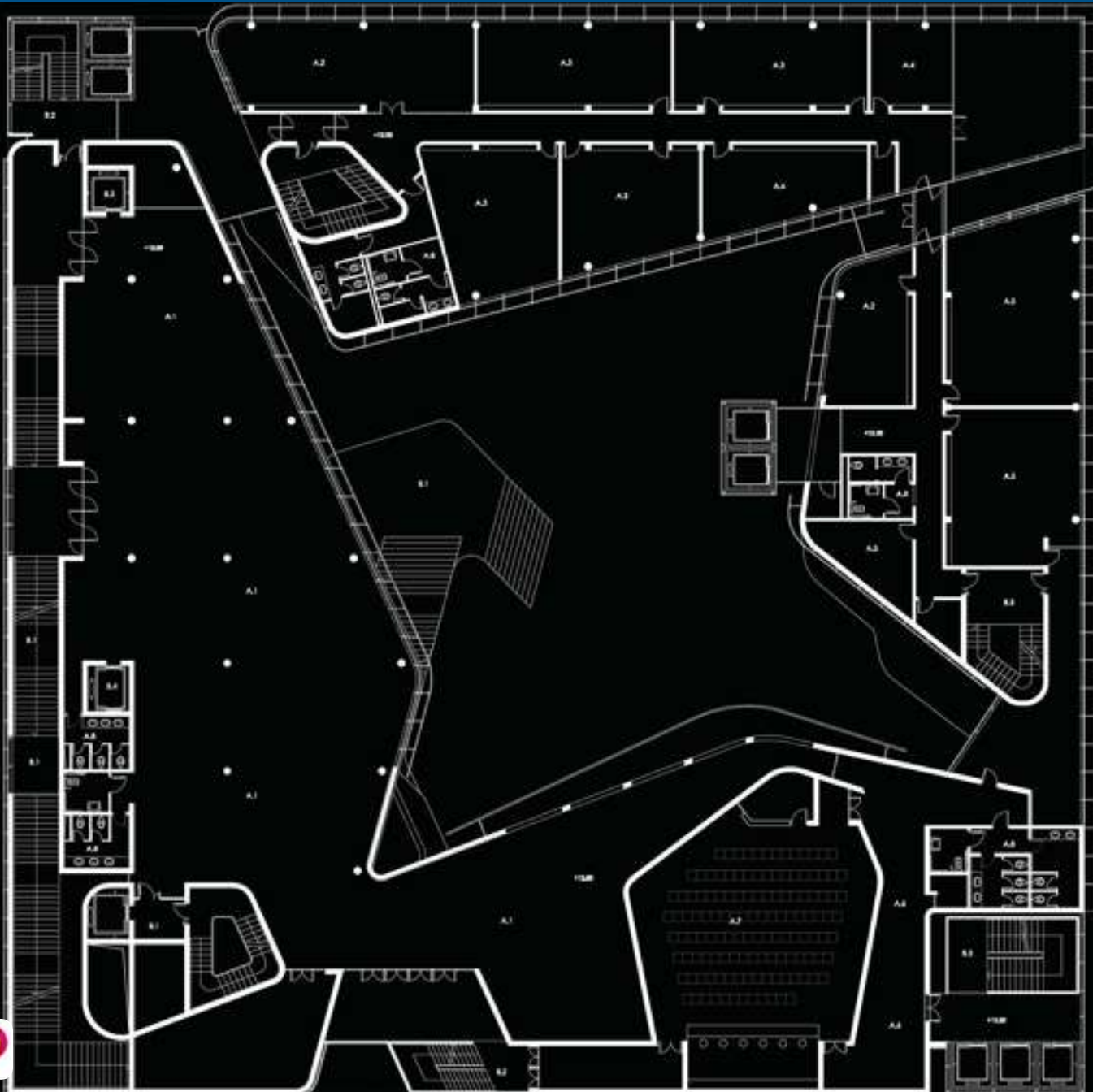
Coffee Cluster

Cocoa and
Chocolate Cluster

Rice Cluster







PROGRAMMA FUNZIONALE DETTAGLIATO

A. INGRESSI HALL E PADIS

- A.1 area sede
- A.2 segreteria
- A.3 office
- A.4 sala meeting
- A.5 staff quarters
- A.6 lounge
- A.7 reception
- A.8



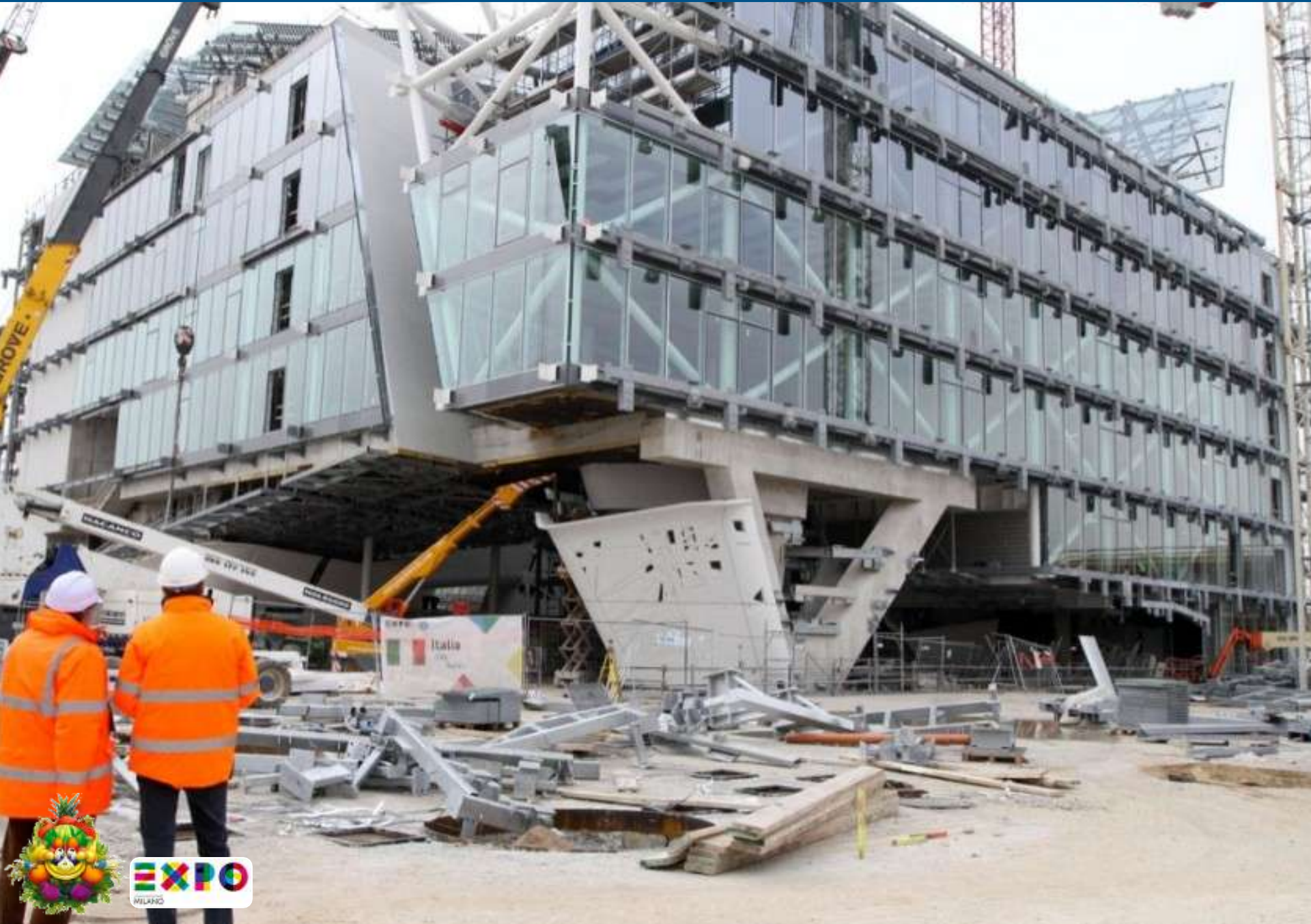


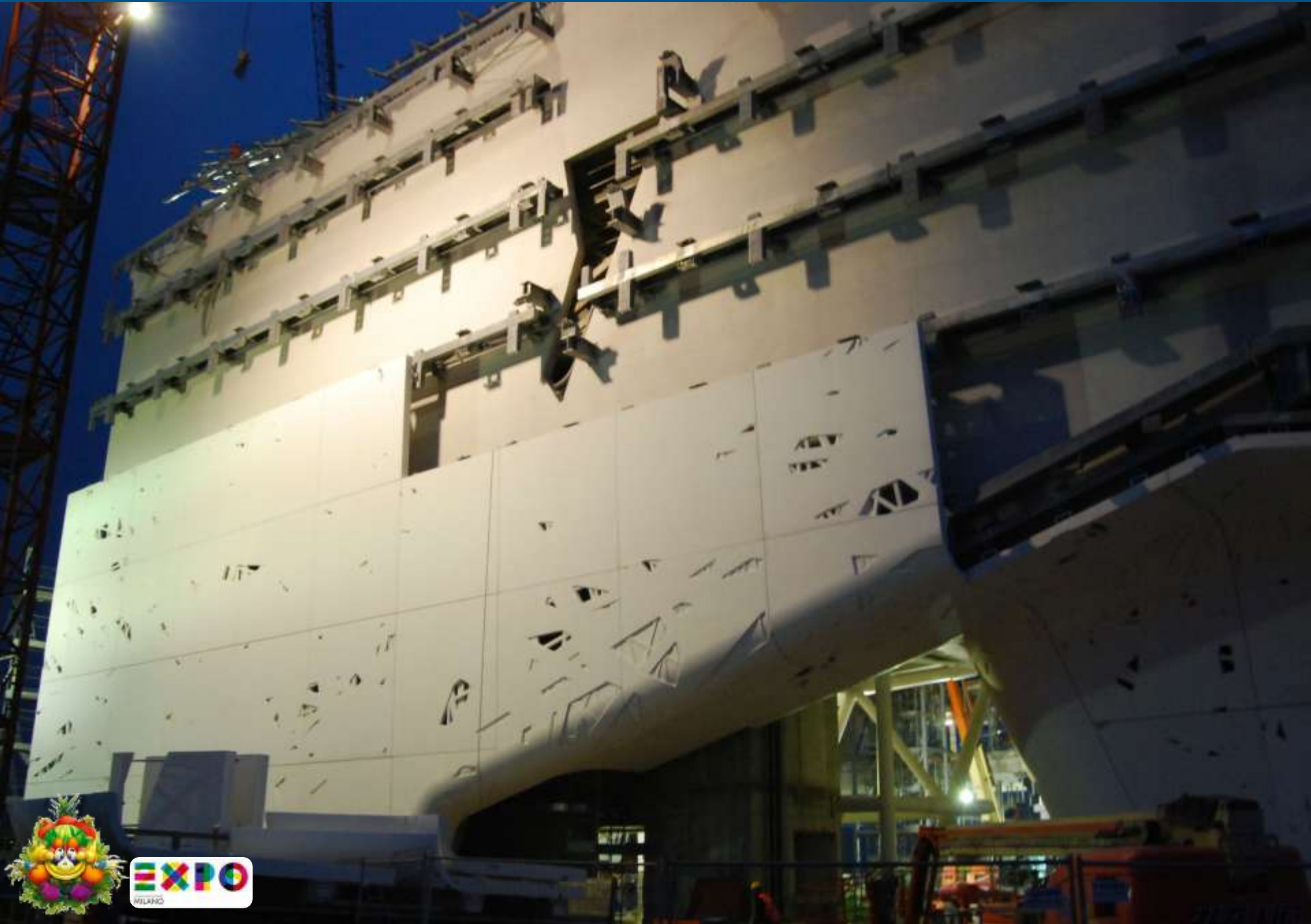
- 1) **As Built check and control of Geometry and positioning of metal flanges and carpentries**
- 1) **Millimetric Check of the concrete panels by first order total station**
- 1) **Global Building Survey**



AS BUILT CHECK AND CONTROL OF GEOMETRY AND POSITIONING OF METAL FLANGES AND CARPENTRIES





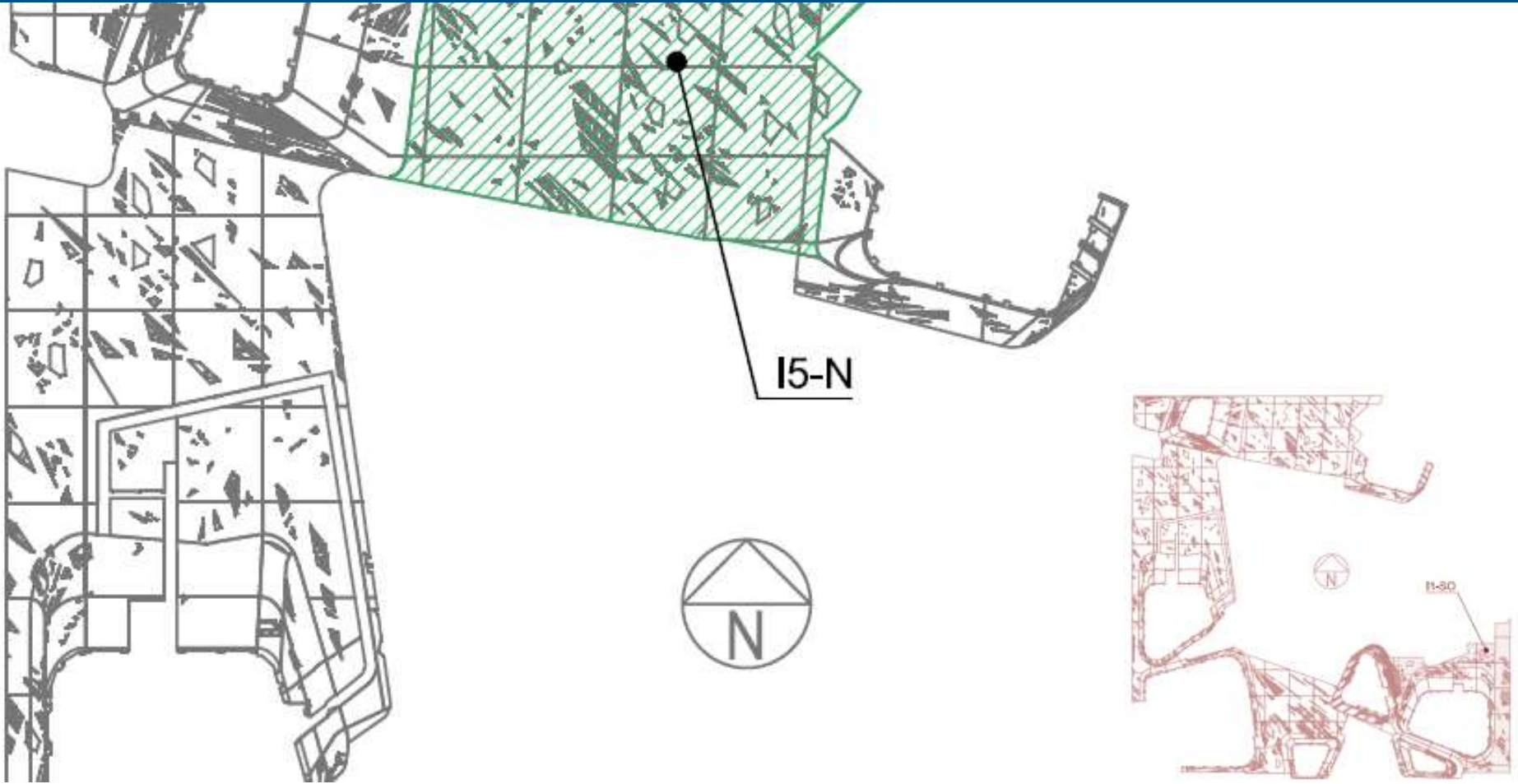






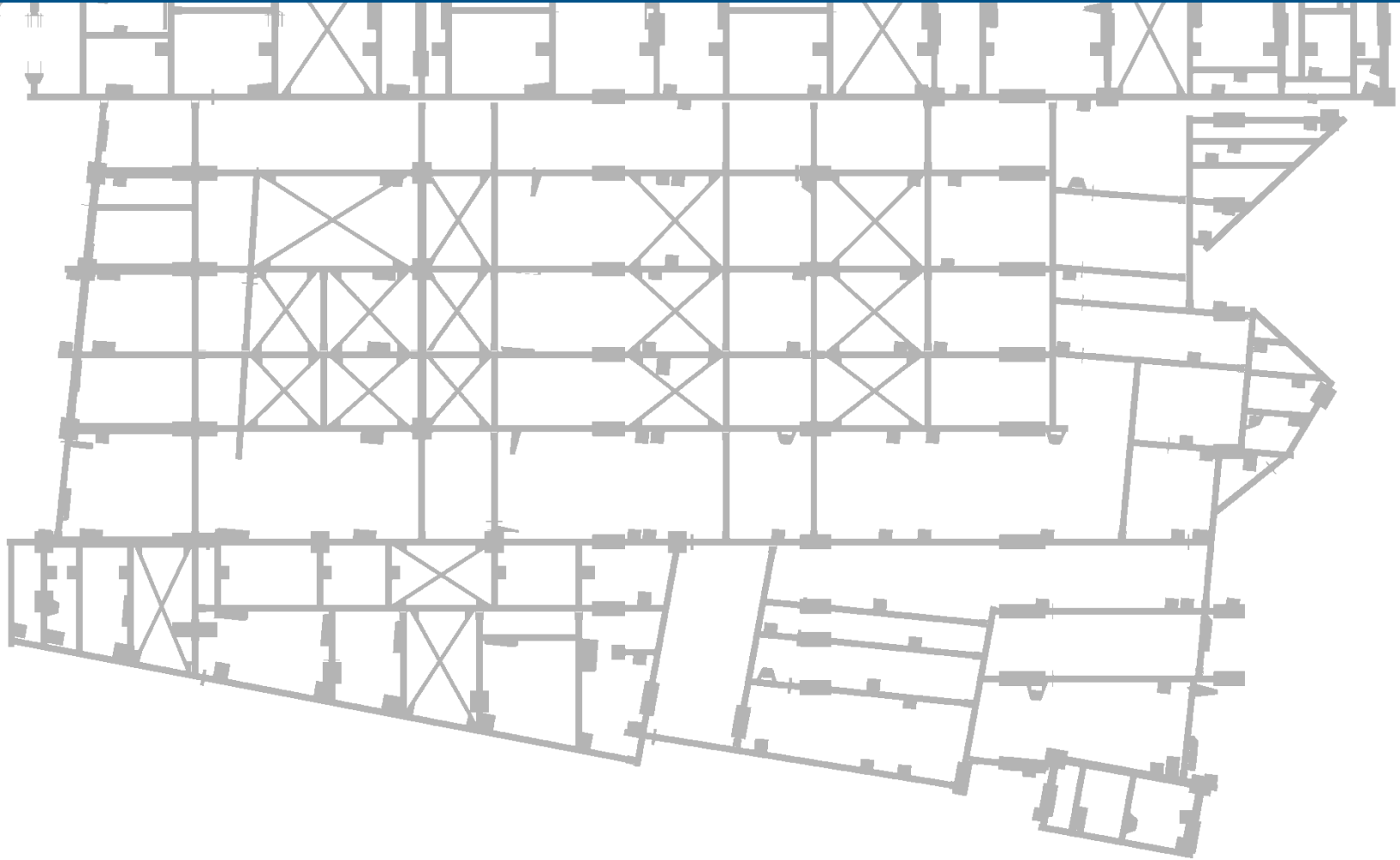






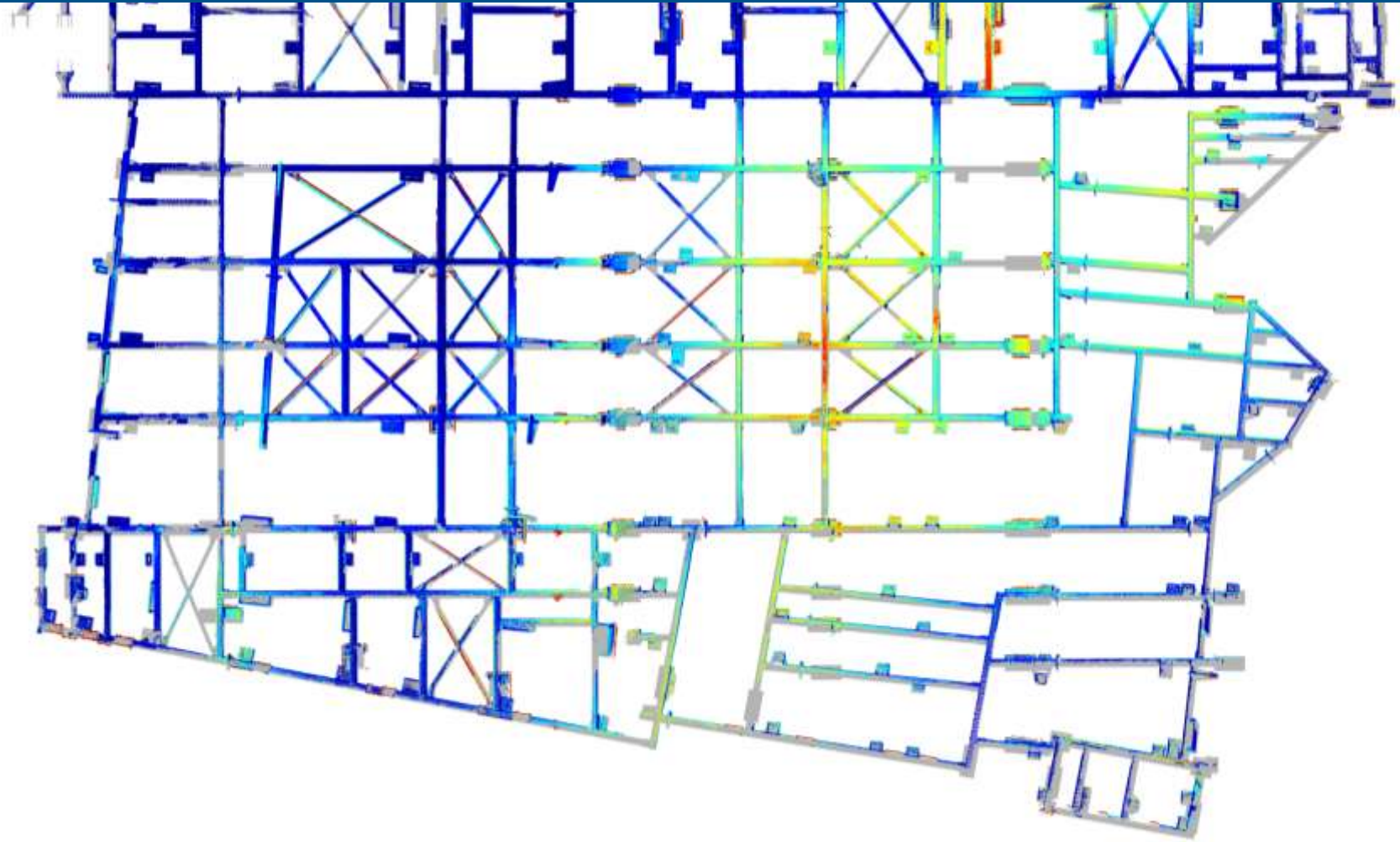
3D CHECK AS-BUILT AND PROJECT STATUS

metal carpentry



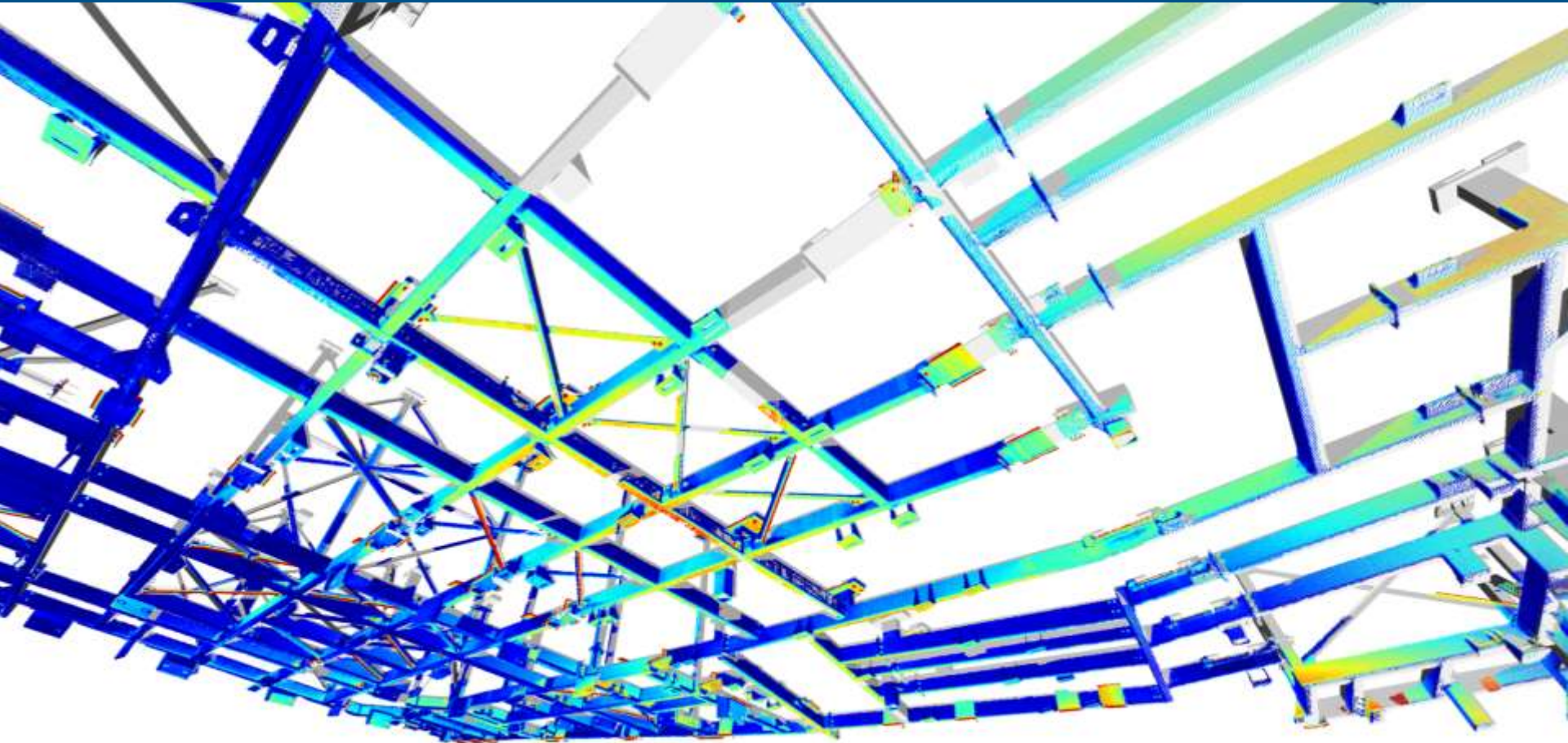
3D CHECK AS-BUILT AND PROJECT STATUS

metal carpentry



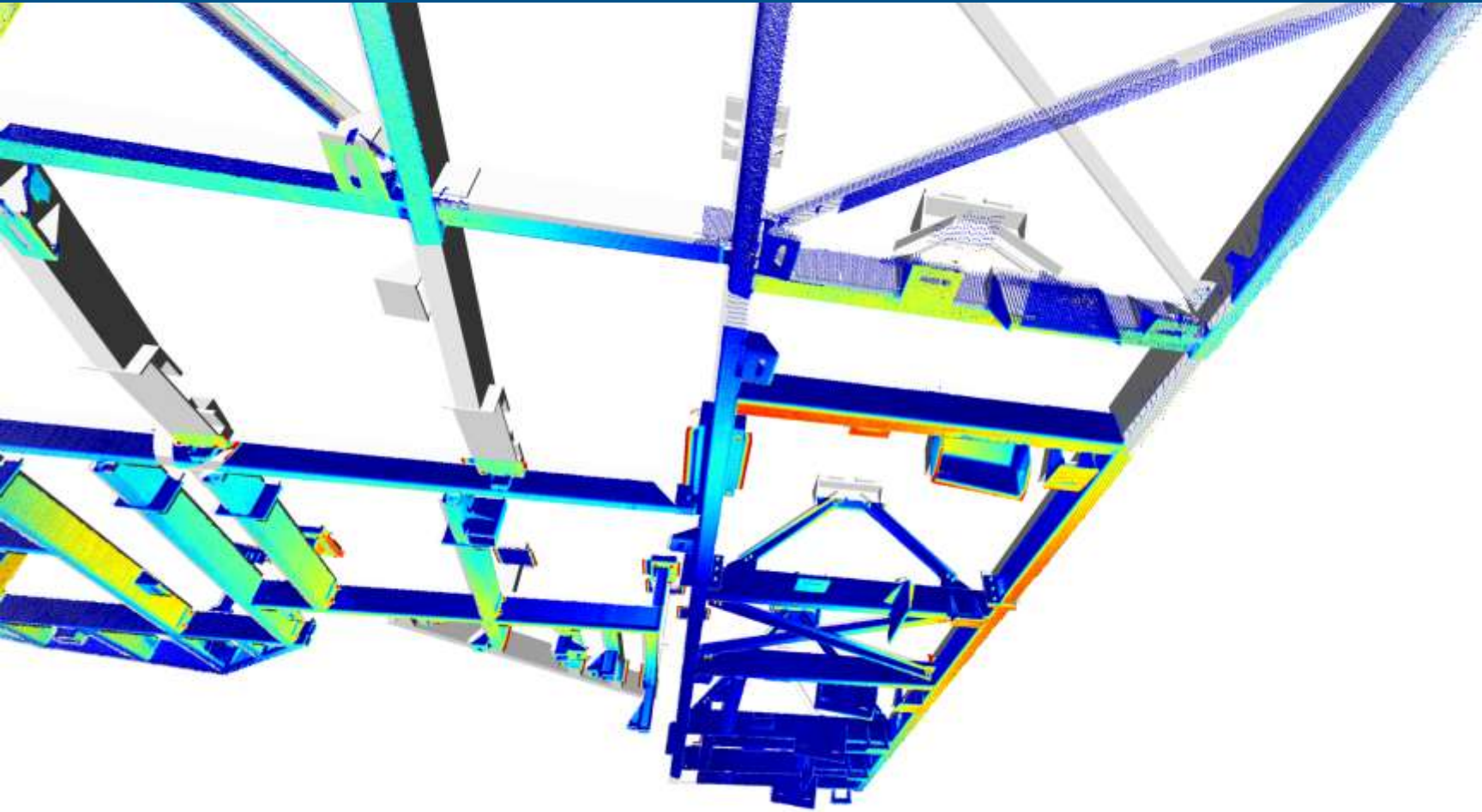
3D CHECK AS-BUILT AND PROJECT STATUS

metal carpentry



3D CHECK AS-BUILT AND PROJECT STATUS

metal carpentry



3D CHECK AS-BUILT AND PROJECT STATUS

metal carpentry

MILLIMETRIC CHECK OF THE CONCRETE PANELS BY FIRST ORDER TOTAL STATION









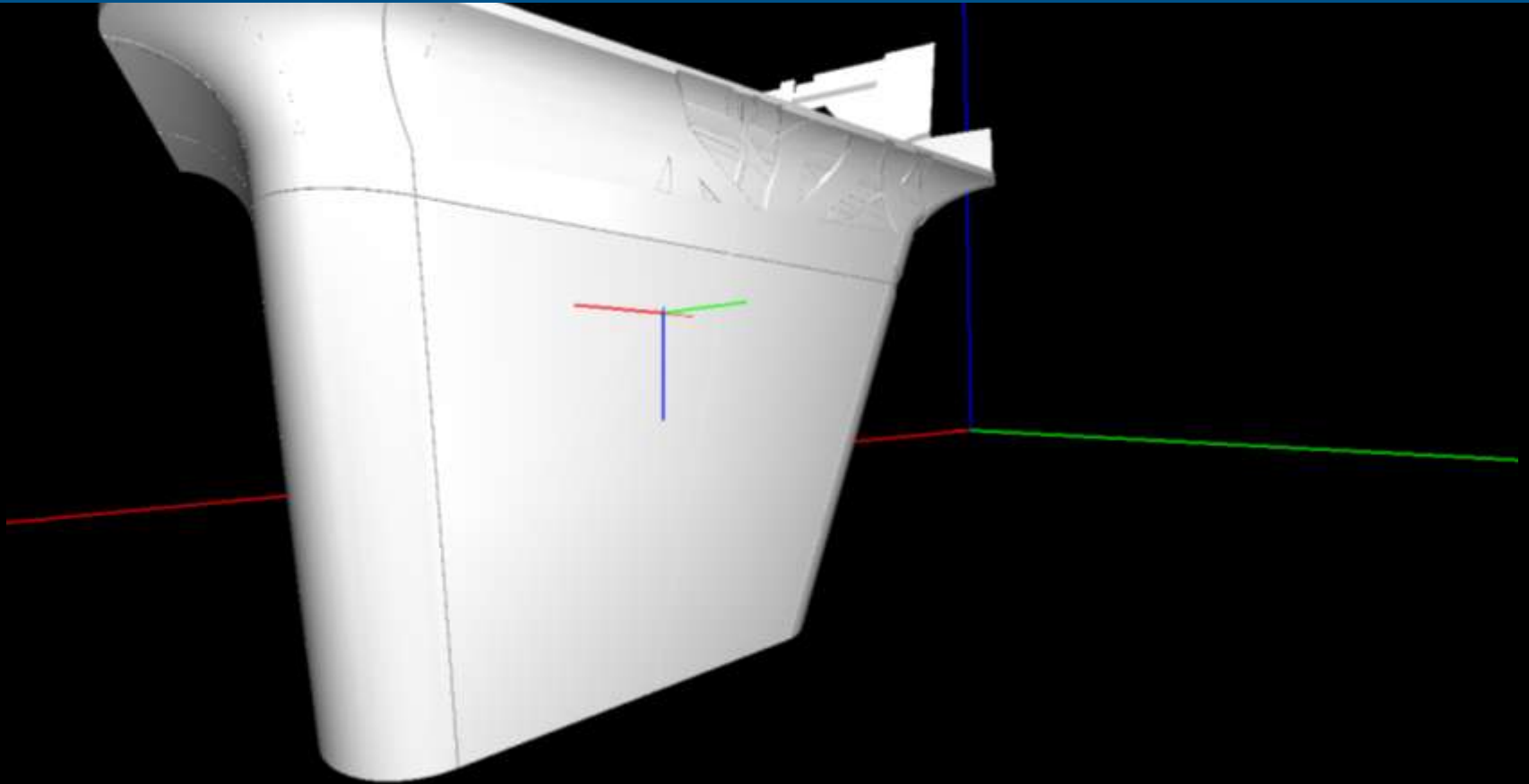
3D CHECK AS BUILT AND PROJECT STATUS

concrete covering panels



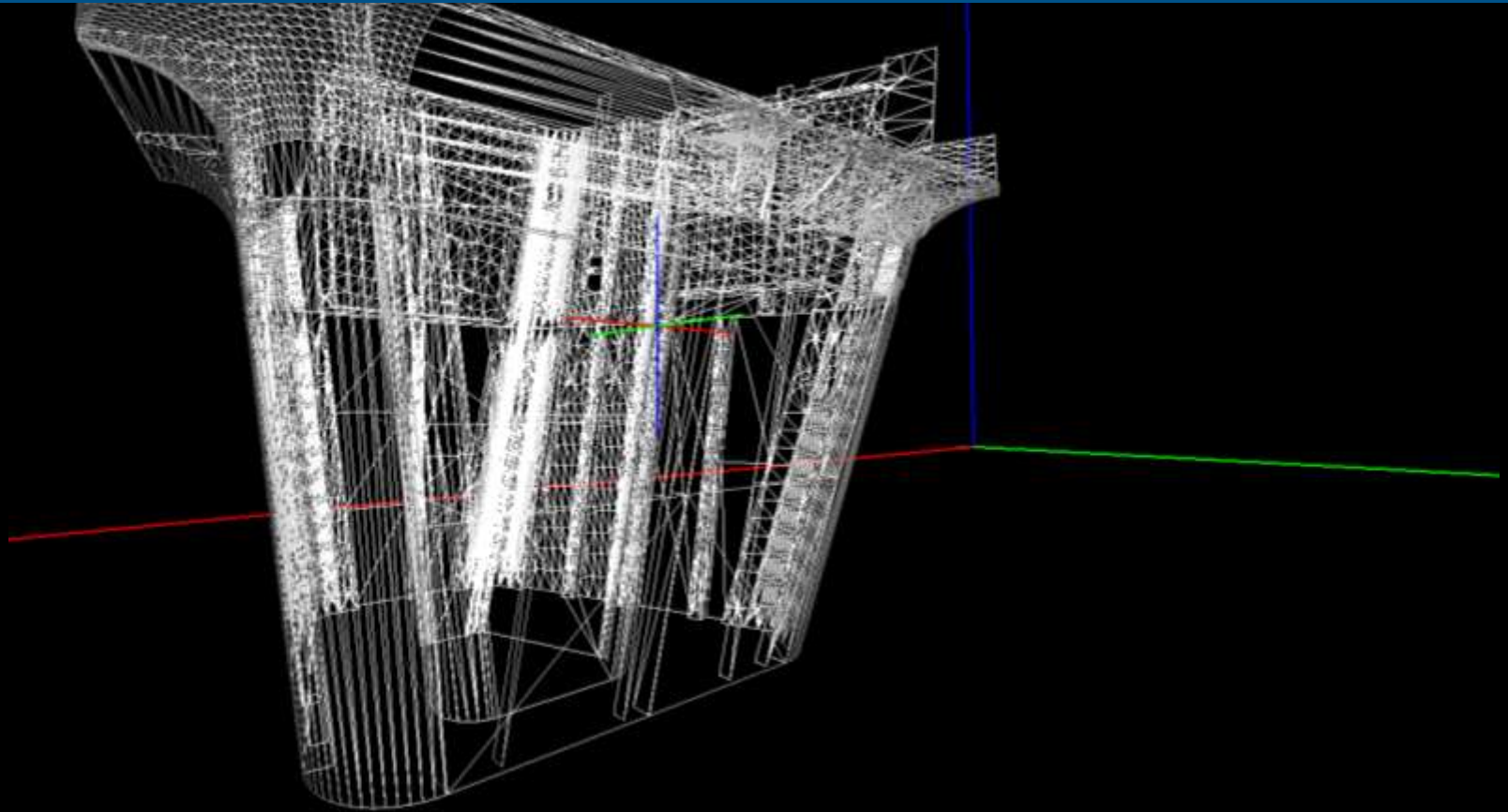
3D CHECK AS BUILT AND PROJECT STATUS

concrete covering panels



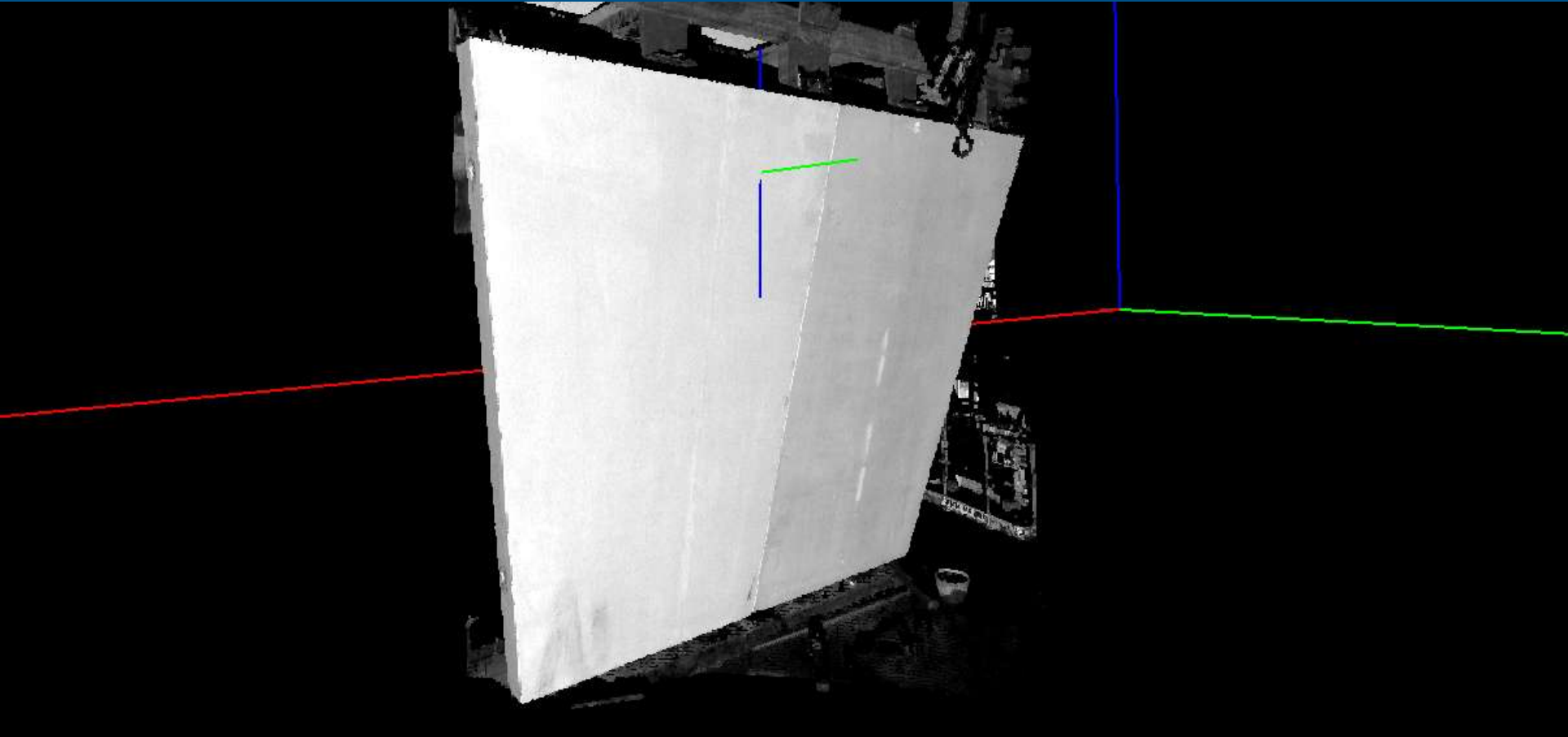
3D CHECK AS-BUILT AND PROJECT STATUS

concrete covering panels



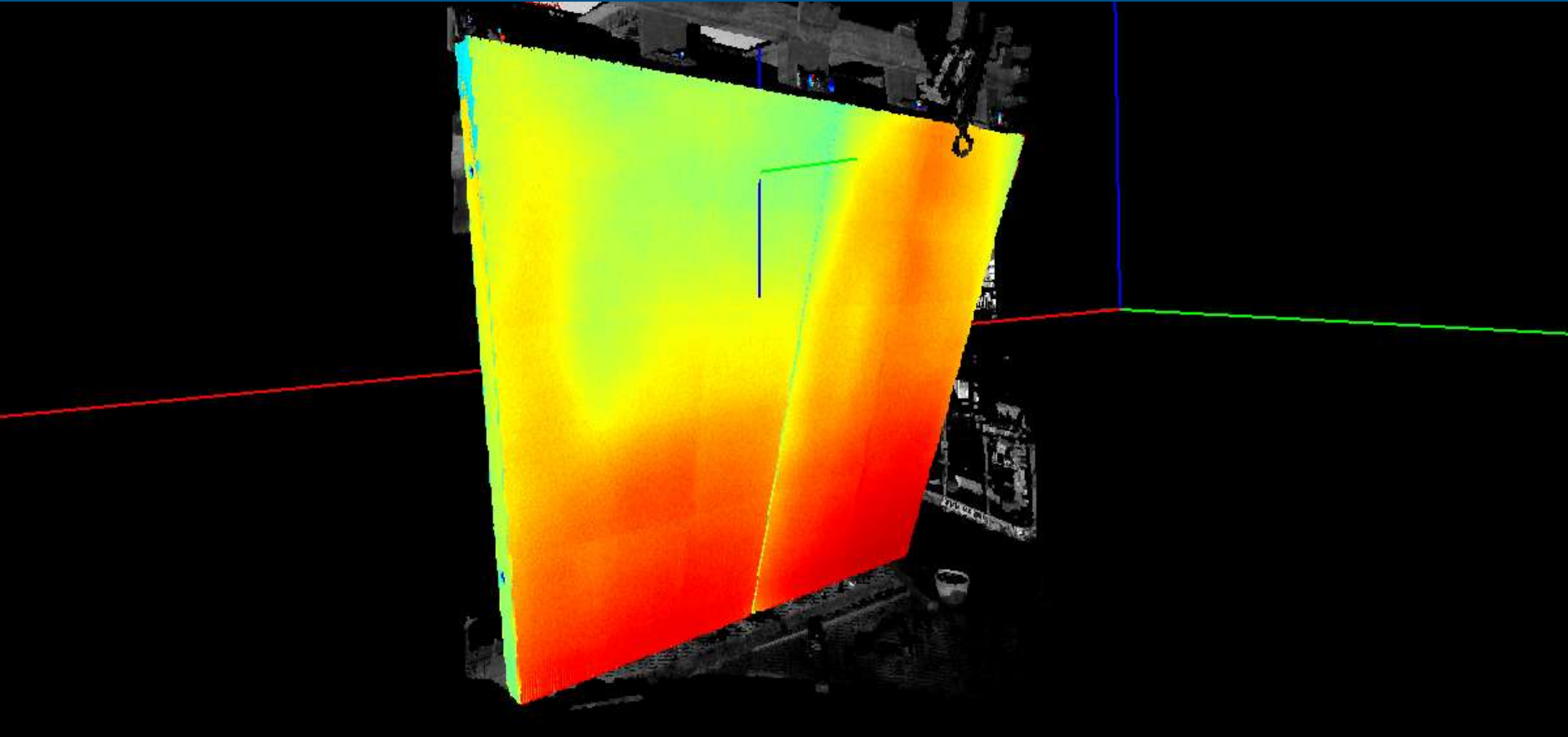
3D CHECK AS-BUILT AND PROJECT STATUS

concrete covering panels



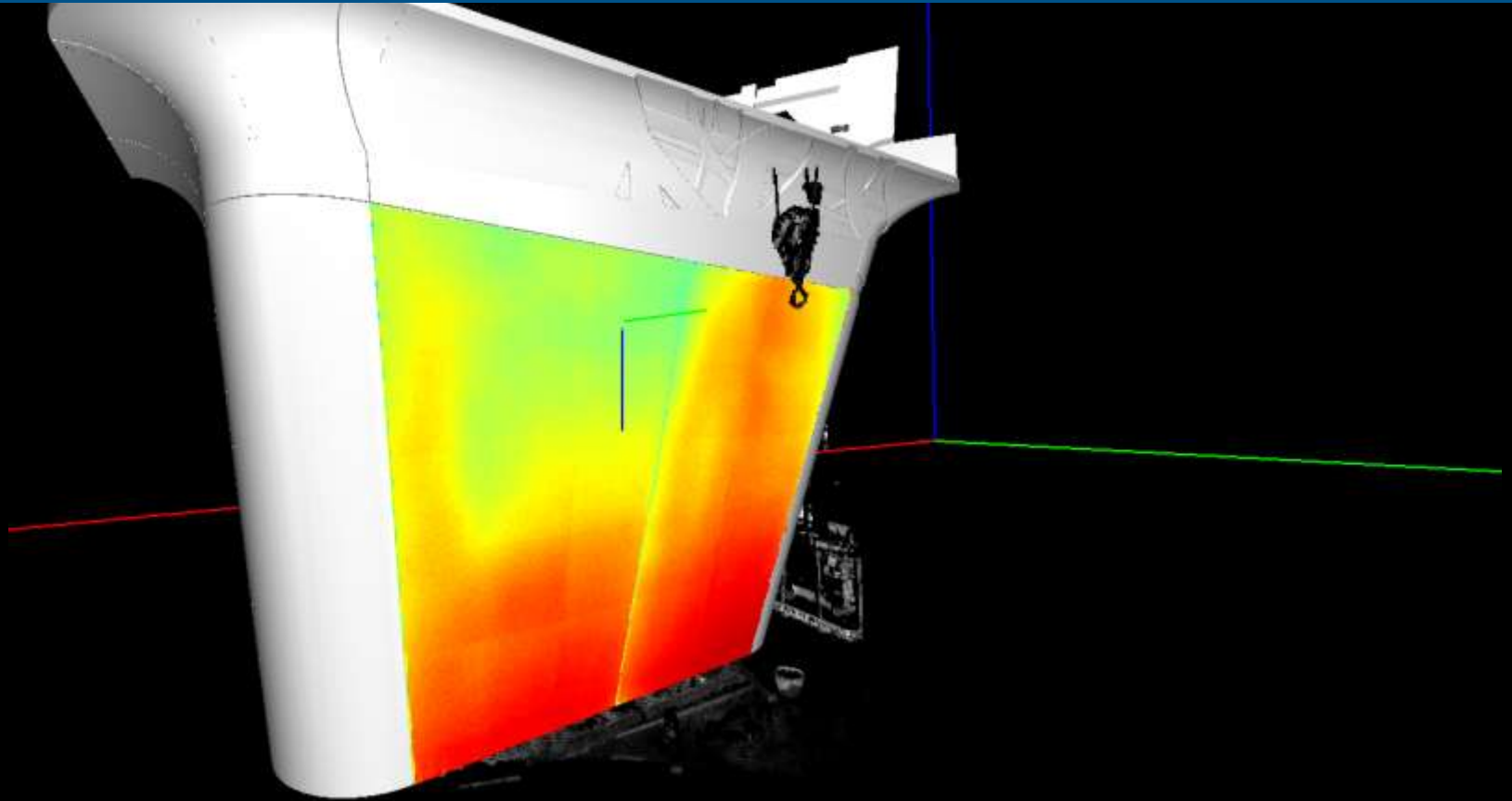
3D CHECK AS-BUILT AND PROJECT STATUS

concrete covering panels



3D CHECK AS-BUILT AND PROJECT STATUS

concrete covering panels

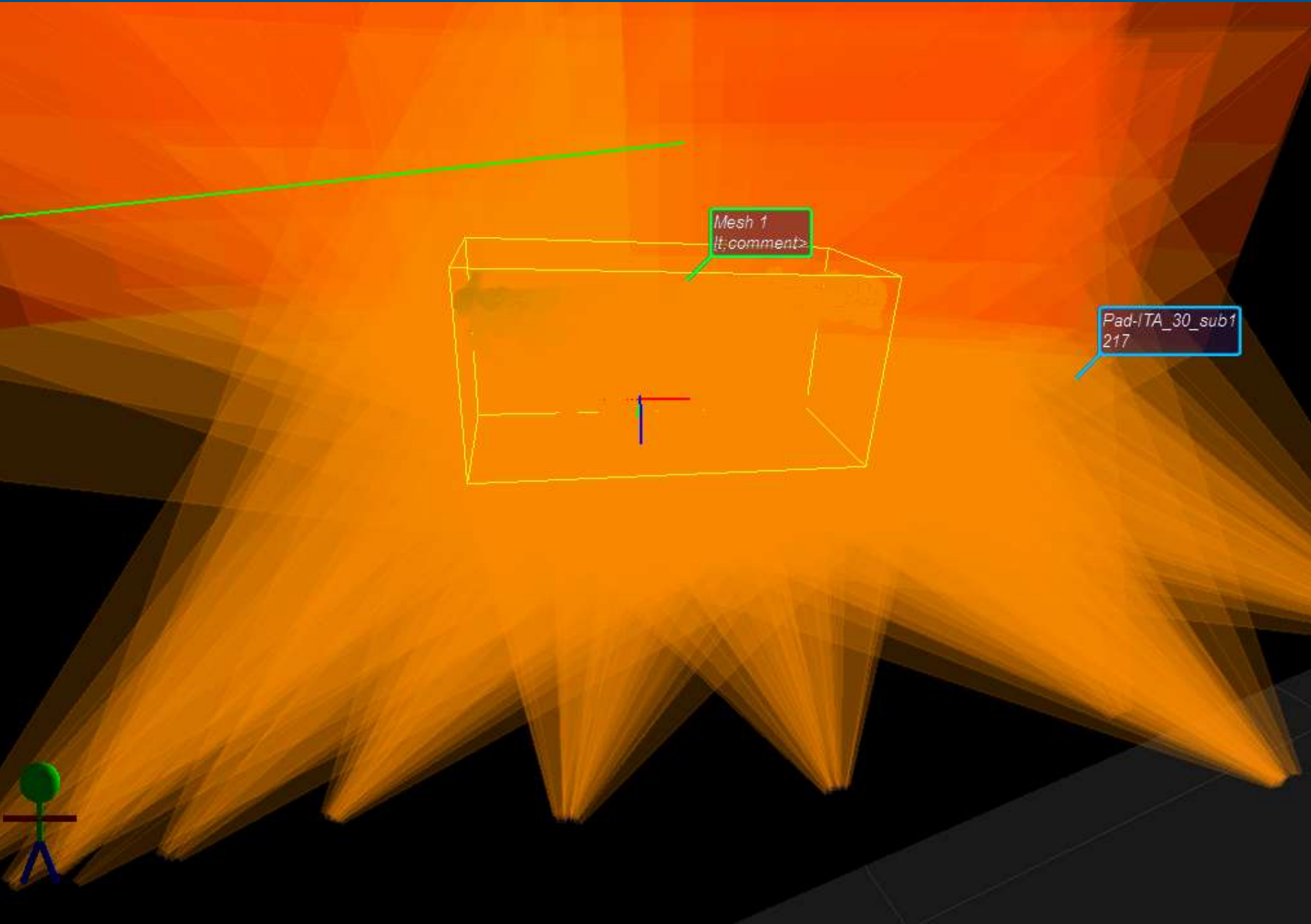


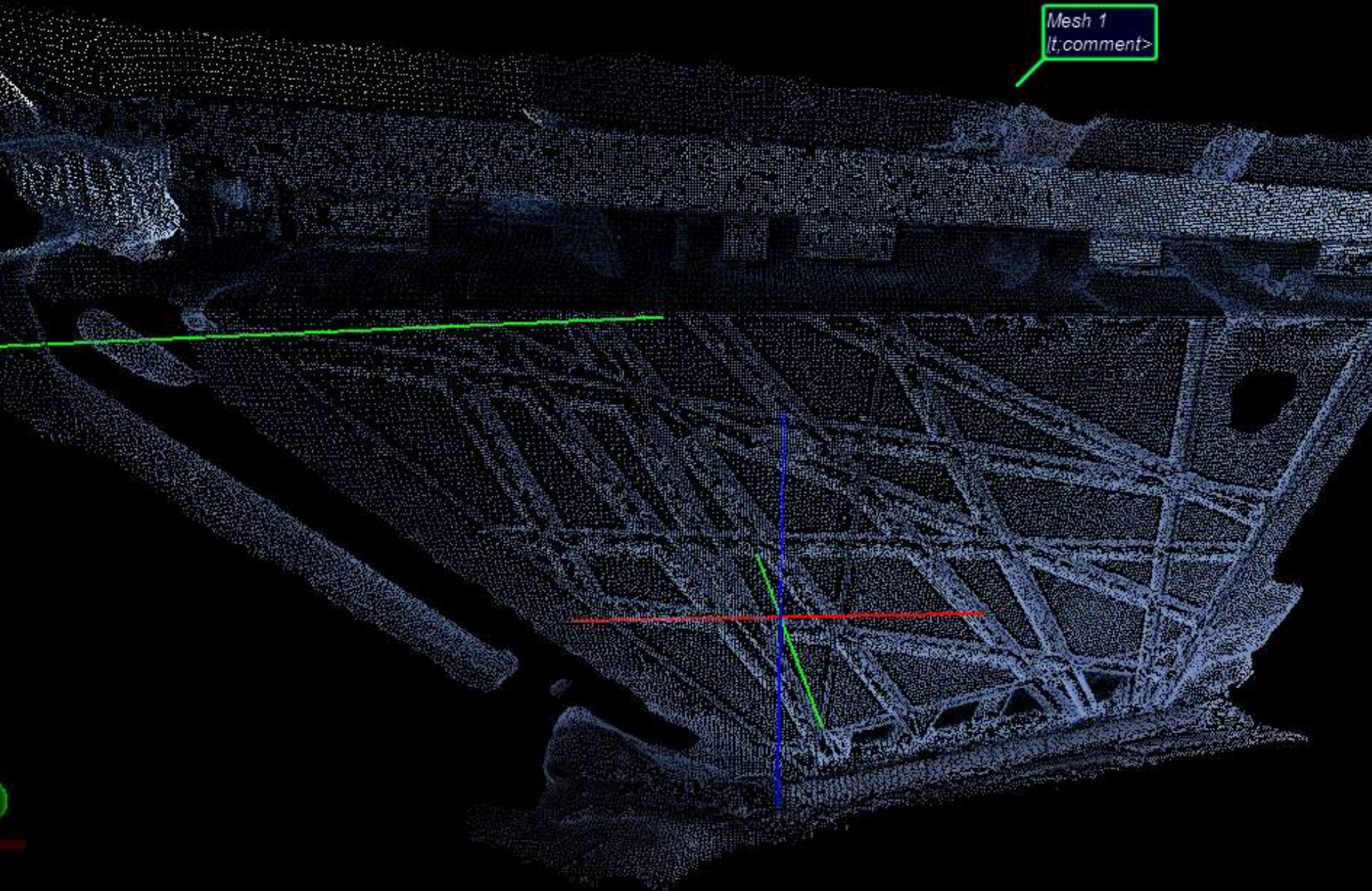
3D CHECK AS-BUILT AND PROJECT STATUS

concrete covering panels

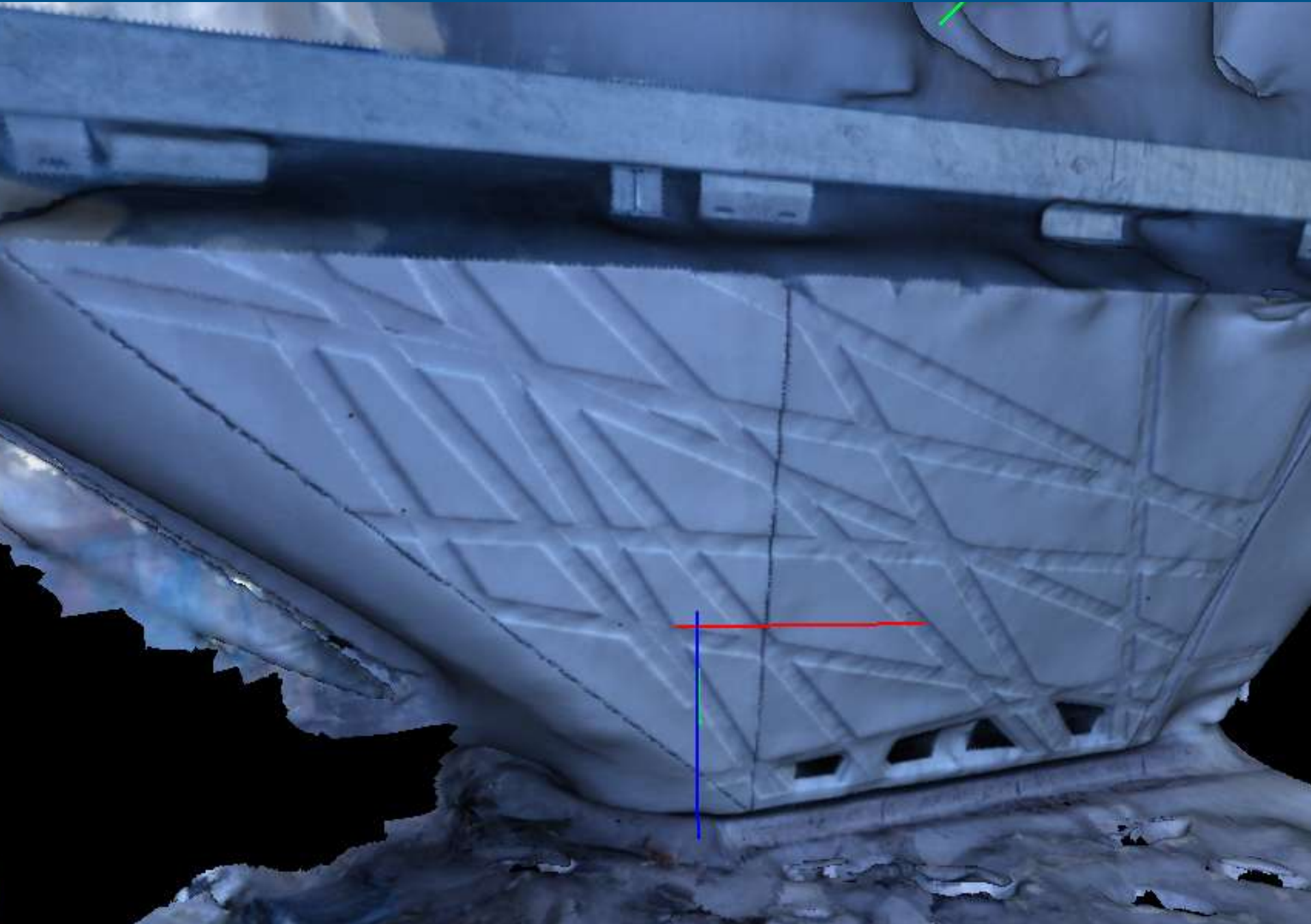
GLOBAL BUILDING SURVEY

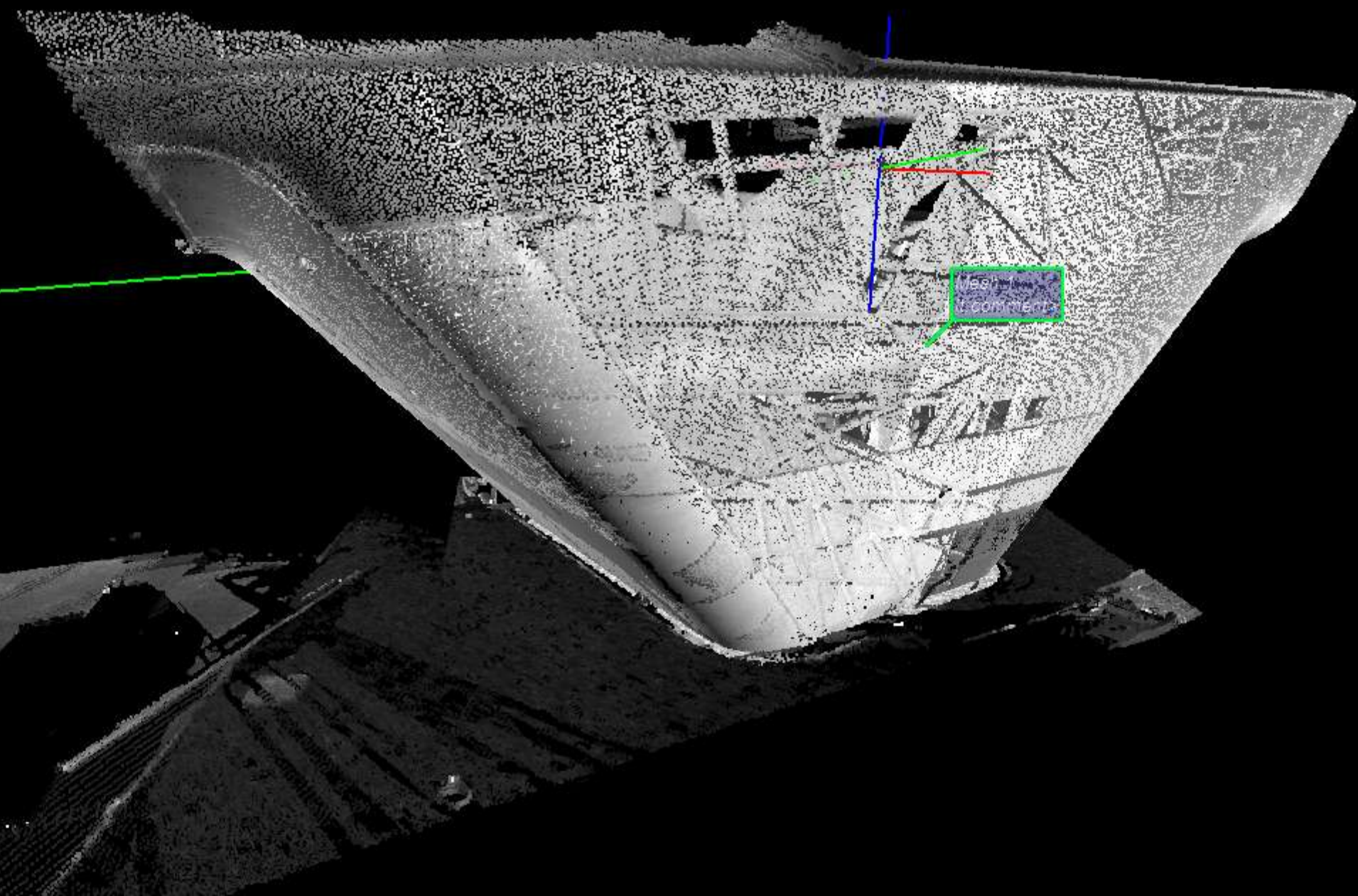


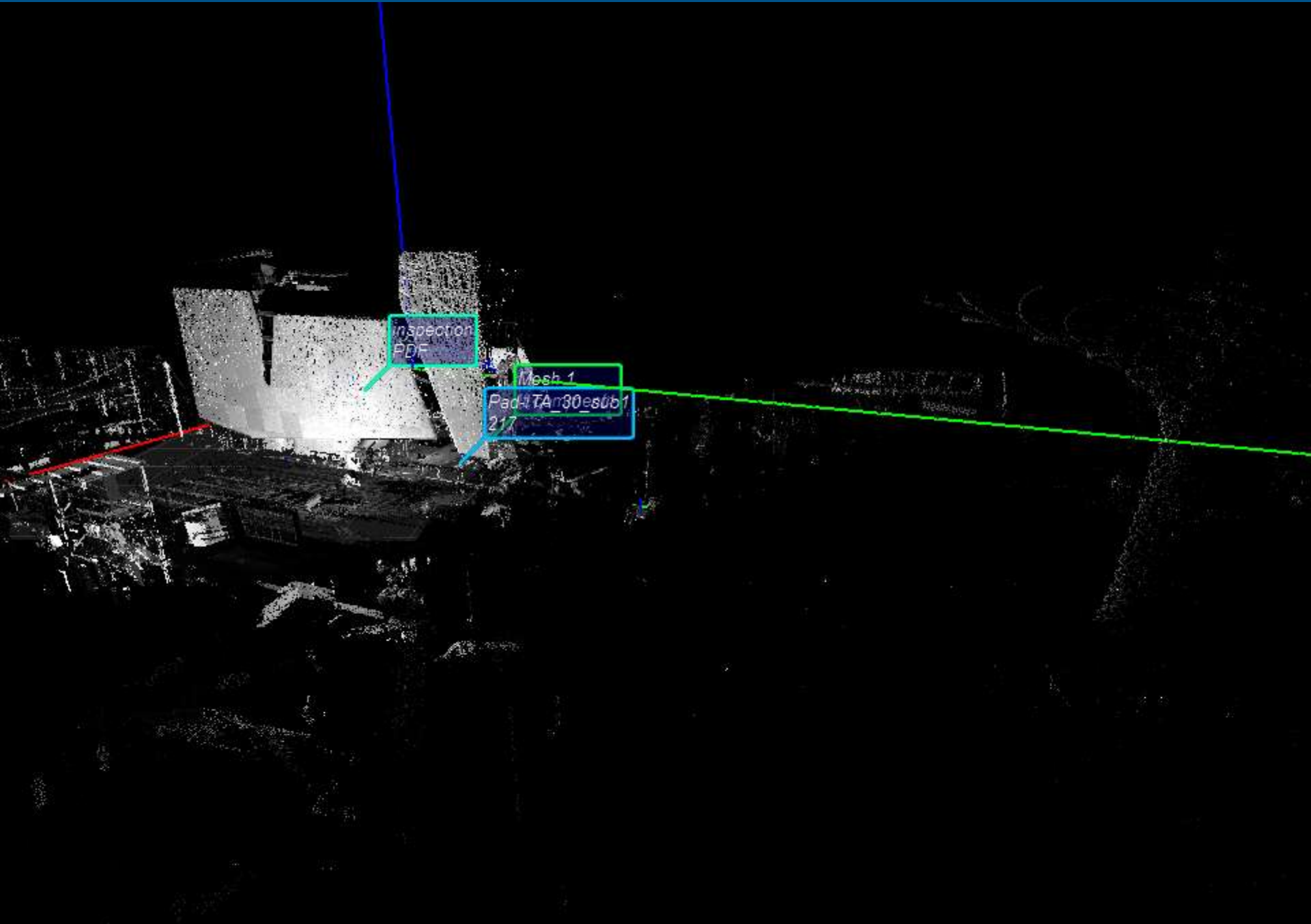


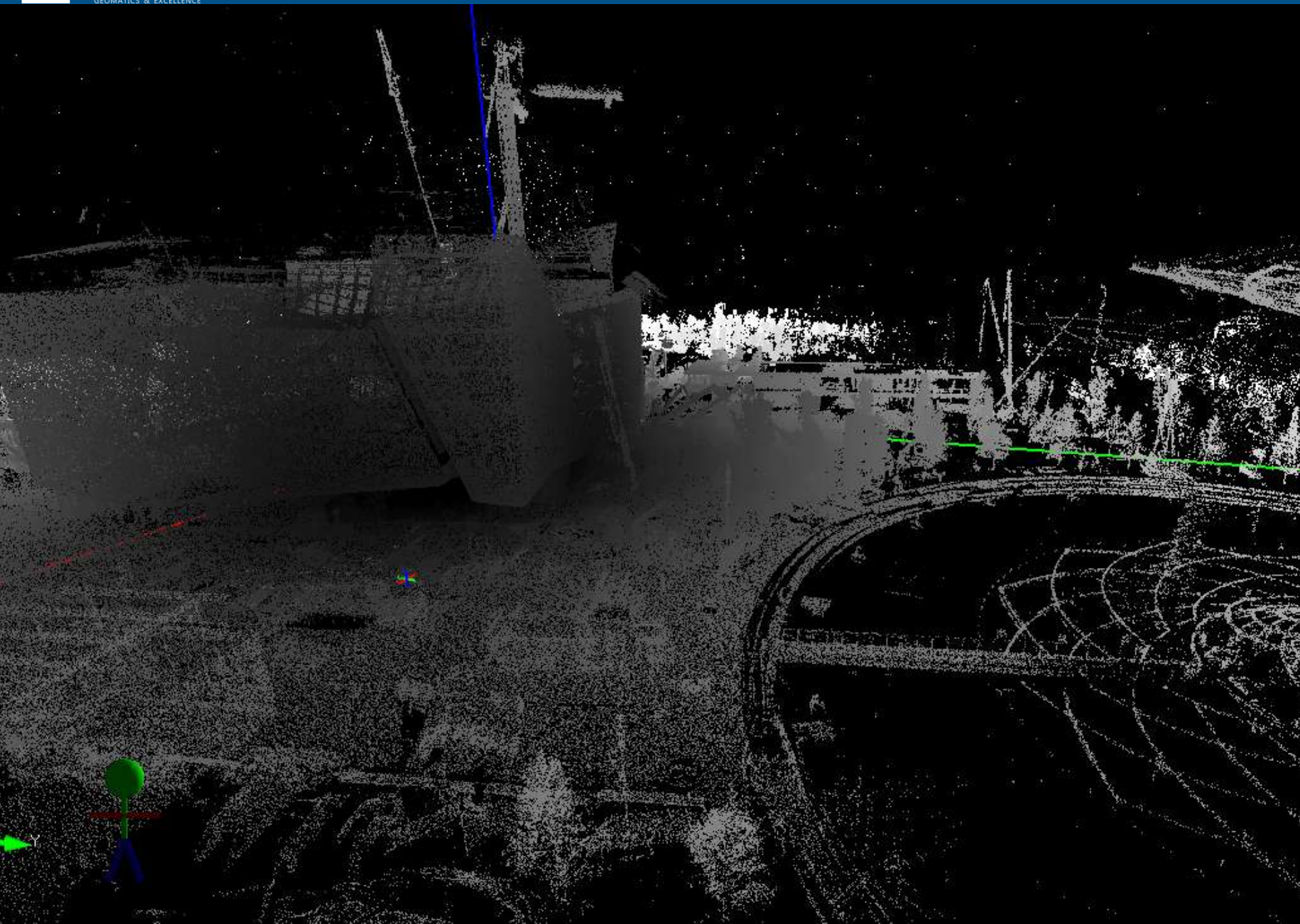


Mesh 1
<lt;comment>











DO YOU NEED MORE INFORMATION?

Our Gexcel team will be happy to help you

(+39) 030 65 95 001

SALES@GEXCEL.IT