

# JUPEM'S INITIATIVES



Datuk Sr Ahmad Fauzi bin Nordin  
Director General  
Department of Survey and Mapping  
Malaysia

# JUPEM

JUPEM is one of the earliest agencies in Malaysia; started in 1885 when the Department of Survey Johor was established to perform cadastral survey activities. During the 1885 and 1957 period, the States Survey and Topographic Department were gradually merged as one entity-into what is now JUPEM.

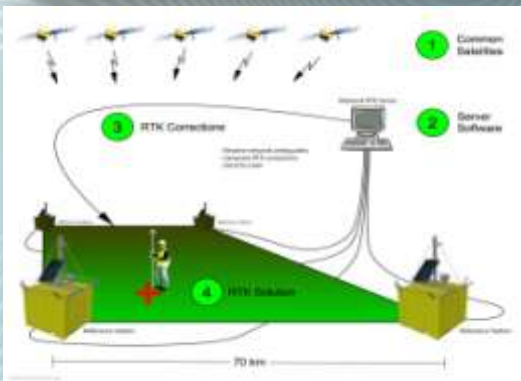
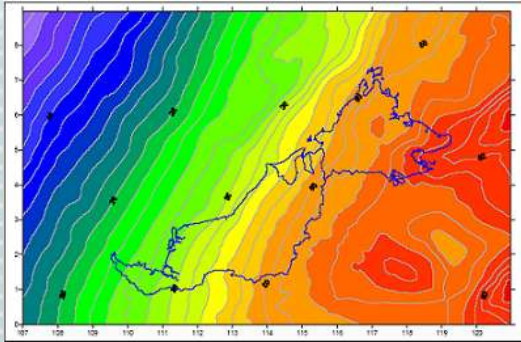


# ACTIVITIES



- CADASTRE
- TOPOGRAPHIC MAPPING
- DEFENCE GEOSPATIAL
- BOUNDARY AFFAIRS
- GEODESY
- UTILITY MAPPING
- CORPORATE, PLANNING & MANAGEMENT SERVICES

# GEOSPATIAL & RELATED INITIATIVES



MyRTKNet

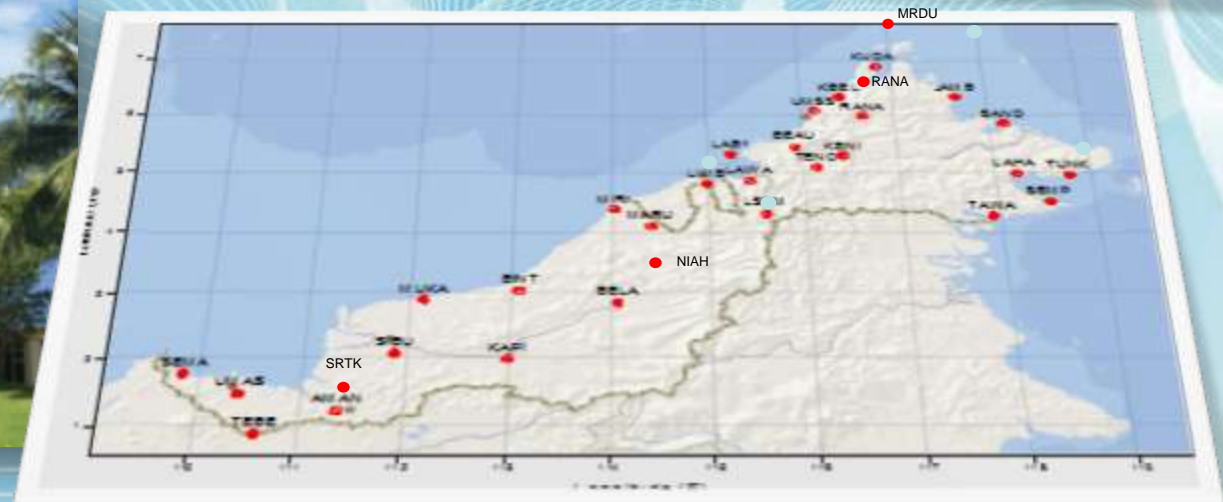
E-Cadastre

Multipurpose  
Cadastre

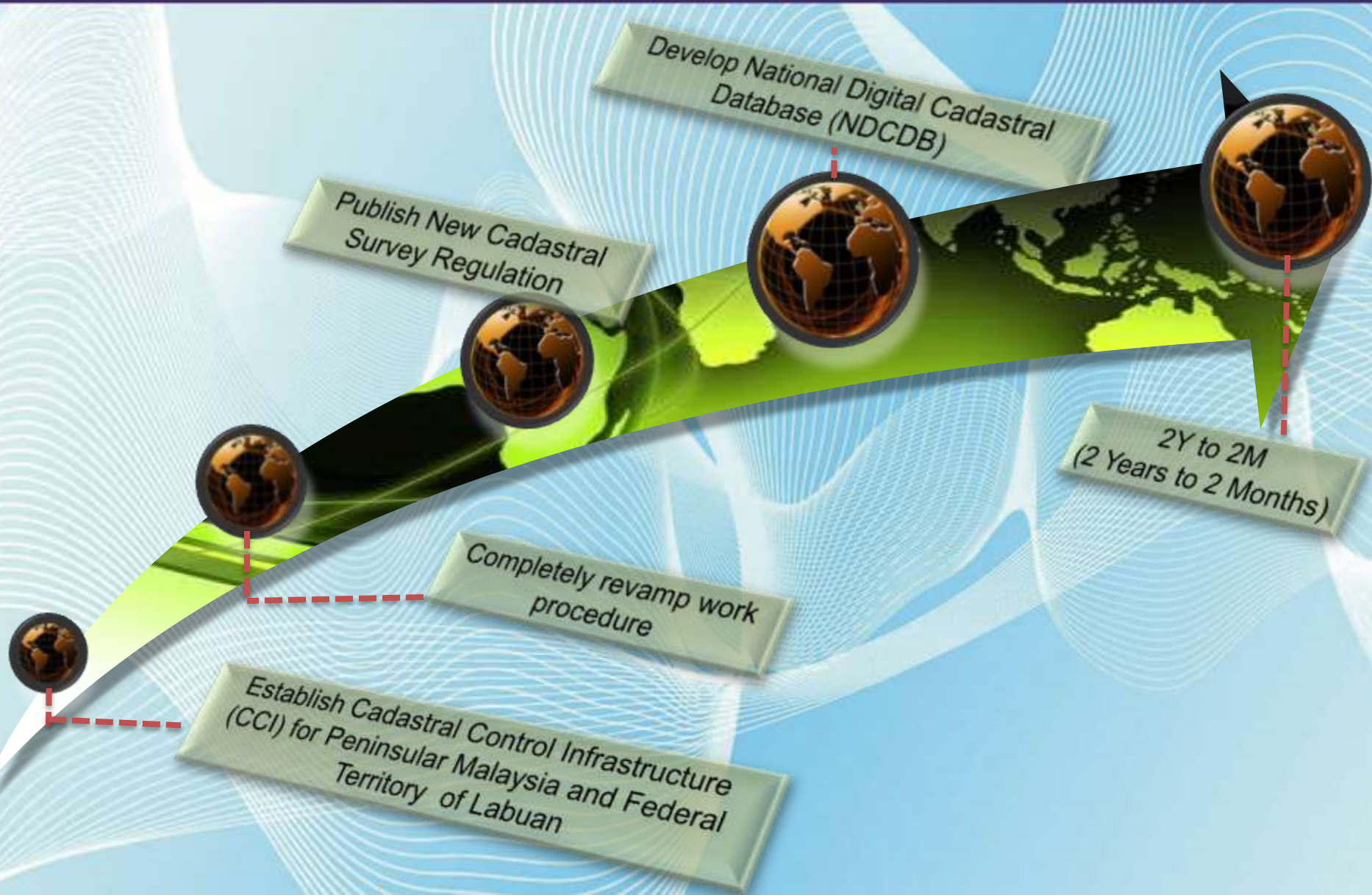
E-Mapping

Geoidal Mapping  
& Height  
Modernization

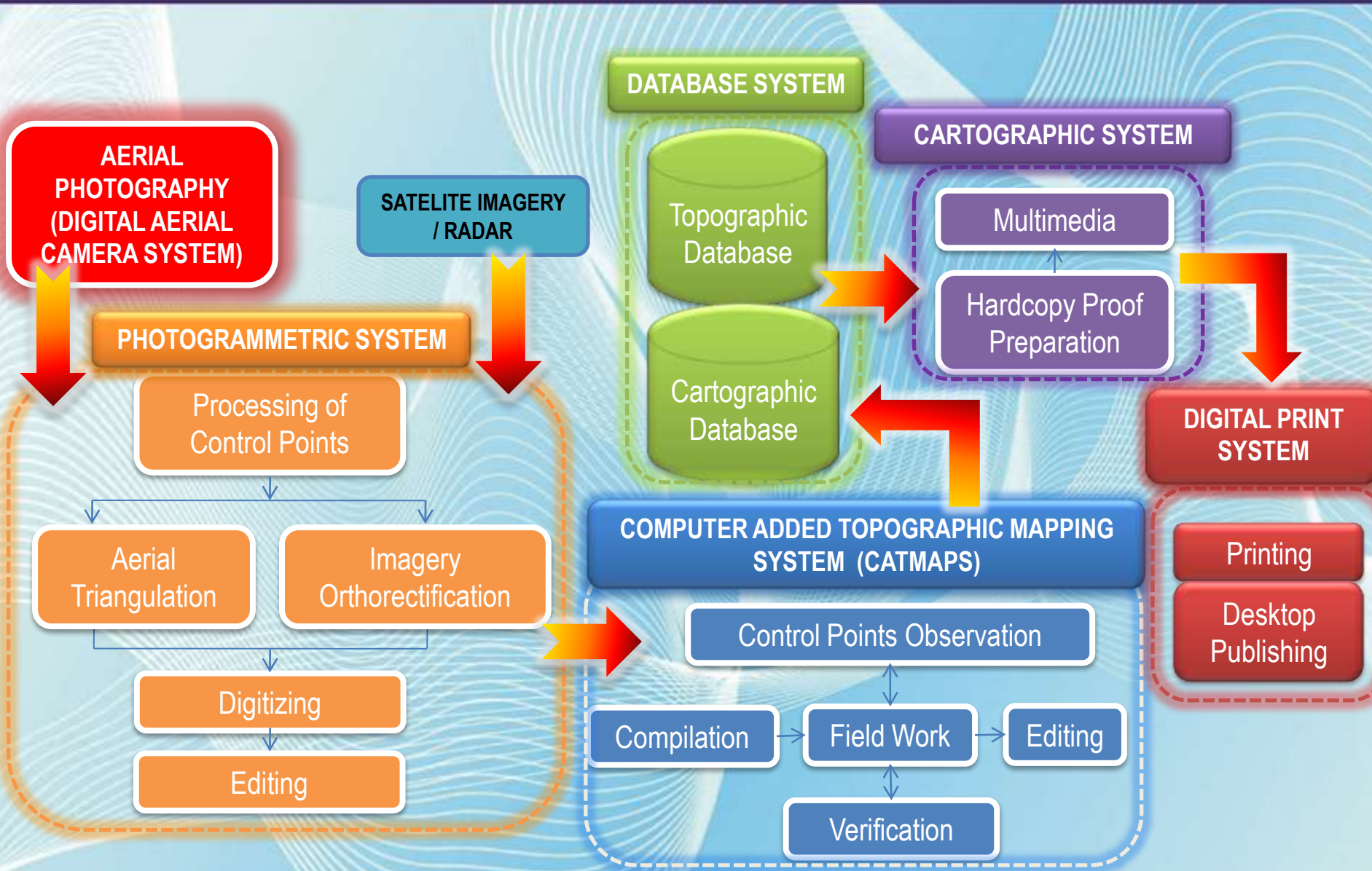
# MALAYSIAN REAL-TIME KINEMATICS GNSS NETWORK (MyRTKNet)



# e-Cadastre



# e-Mapping

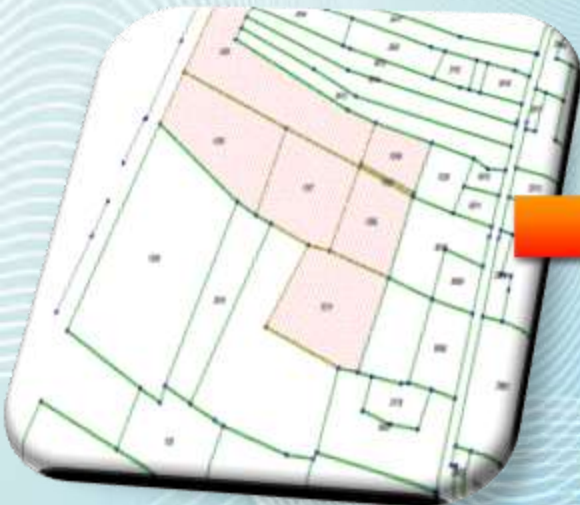


# MULTIPURPOSE CADASTRE

National Digital  
Cadastral Database  
(NDCDB)

Large Scale  
Geographic Features

Multipurpose Cadastre  
(MPC)



3D City Model

MTLS

Street Address

Building/  
Facilities

Large Scale GIS  
Base Map

Survey Accurate  
NDCDB

LGDC/SGDC

NDCDB



# GEOIDAL MAPPING & HEIGHT MODERNIZATION

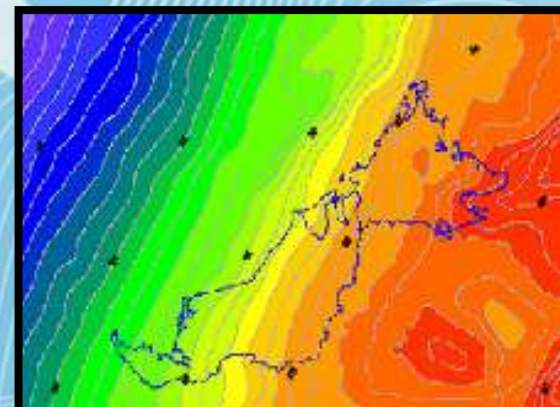
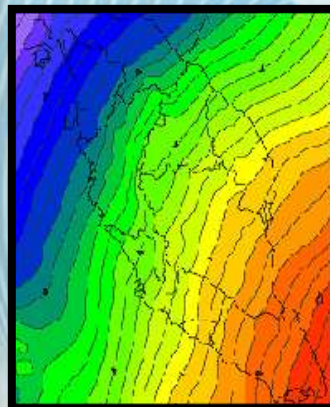
Digital Levelling



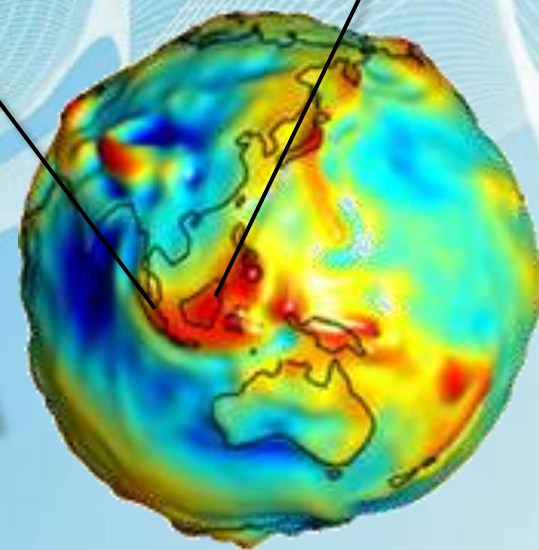
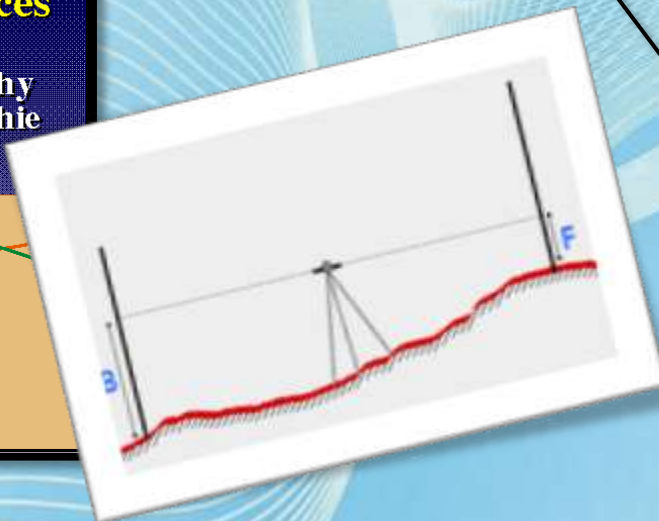
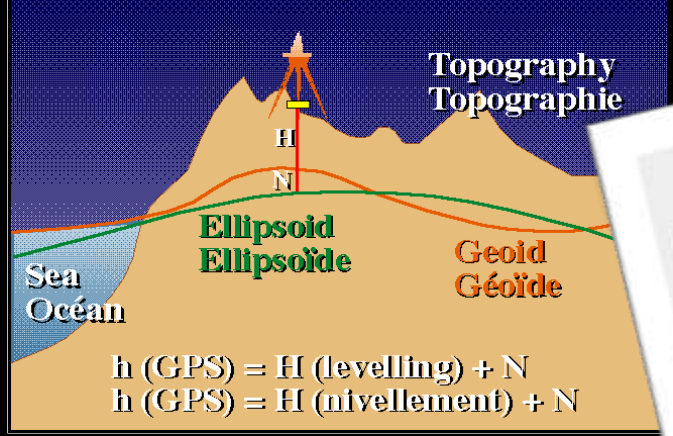
GPS Levelling



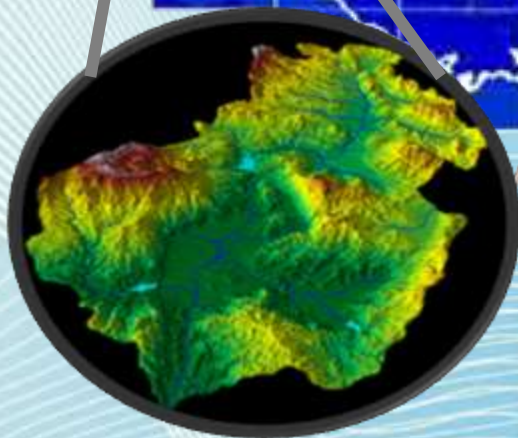
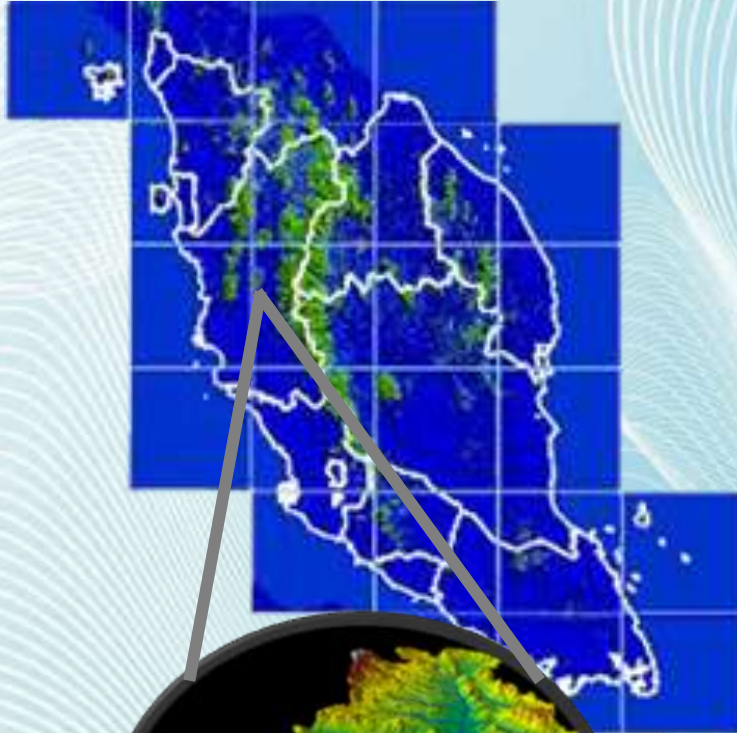
GEOID Model - 5 cm



Three Surfaces / Trois surfaces



# DIGITAL TERRAIN MODEL ( DTM )

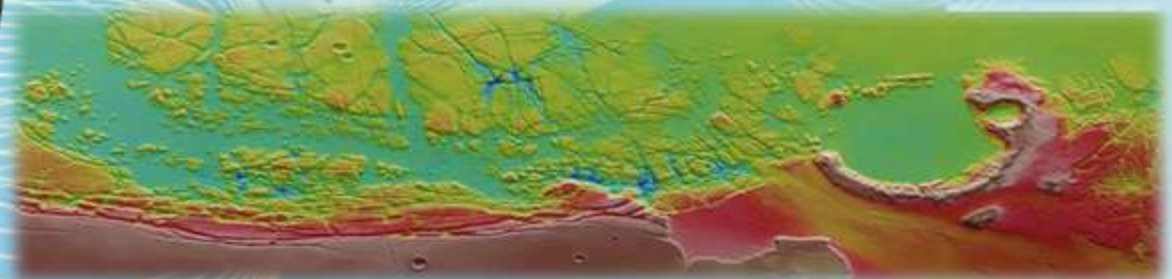


## Currently

- 20 meter accuracy
- 5 meter accuracy in Selected Town / City

RMK-11

- 1.5 meter accuracy (IfSAR)
- Cm level accuracy using LIDAR



Thank You

DATUK SR AHMAD FAUZI BIN NORDIN  
Department Survey and Mapping Malaysia

